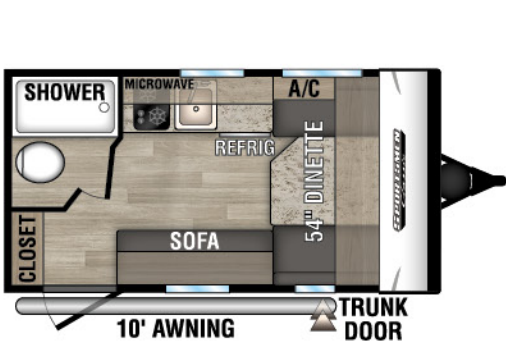




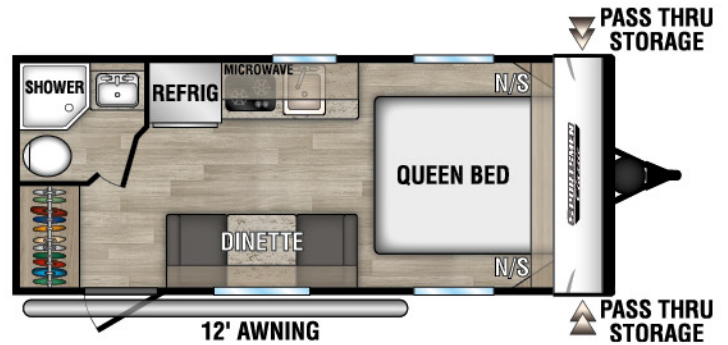
RECREATIONAL  
VEHICLES

# SPORTSMEN Classic

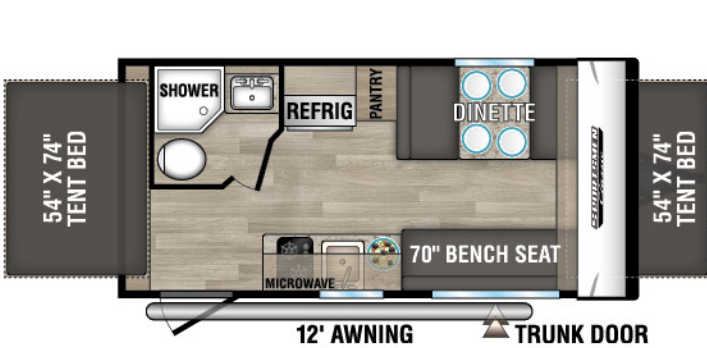
ULTRA LIGHTWEIGHT TRAVEL TRAILERS



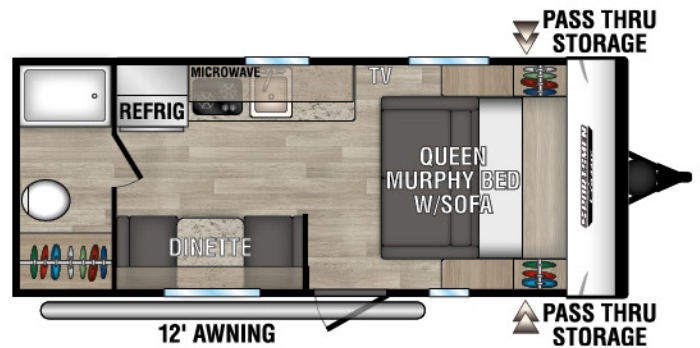
130RB Uvw - 2,350 | Exterior Length - 16' 9" | Sleeps - 2



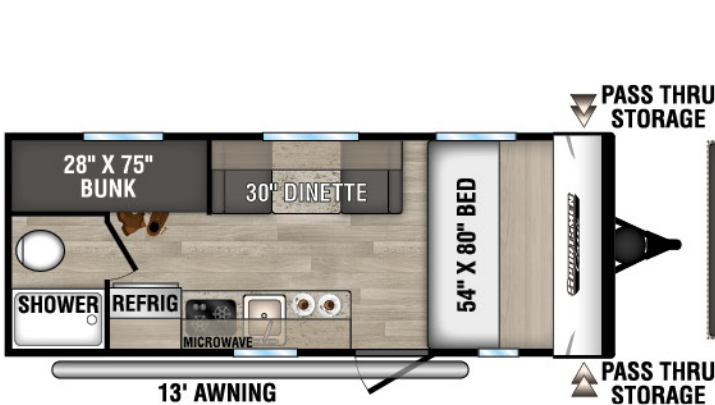
160QB Uvw - 2,940 | Exterior Length - 22' | Sleeps - 3



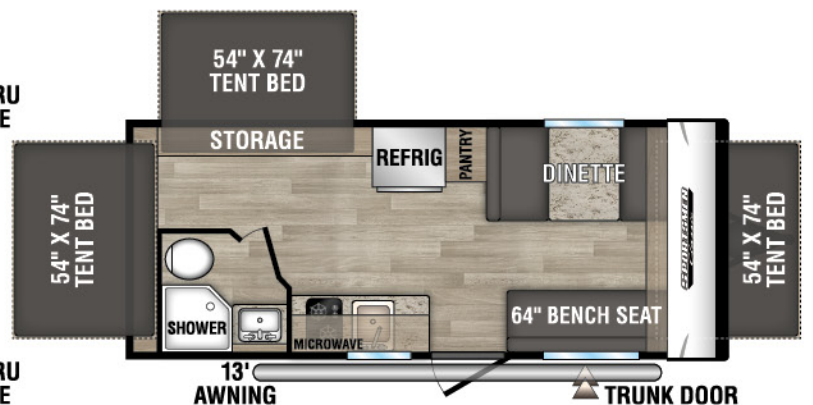
160RBT Uvw - 2,850 | Exterior Length - 19' 2" | Sleeps - 6



170MB Uvw - 2,980 | Exterior Length - 22' | Sleeps - 3

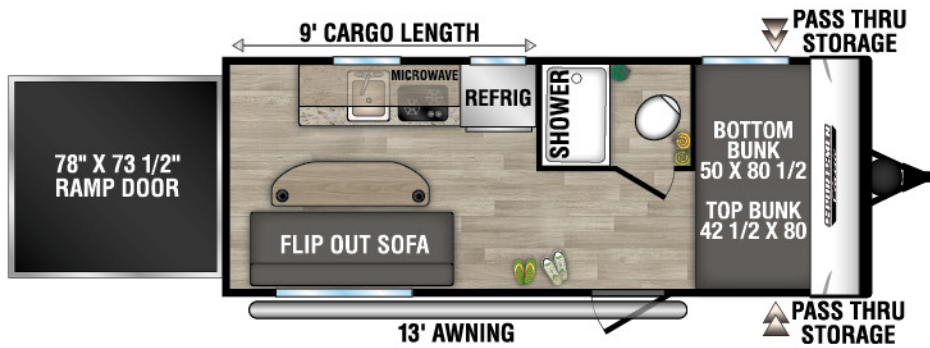


180BH Uvw - 2,690 | Exterior Length - 21' 5" | Sleeps - 4

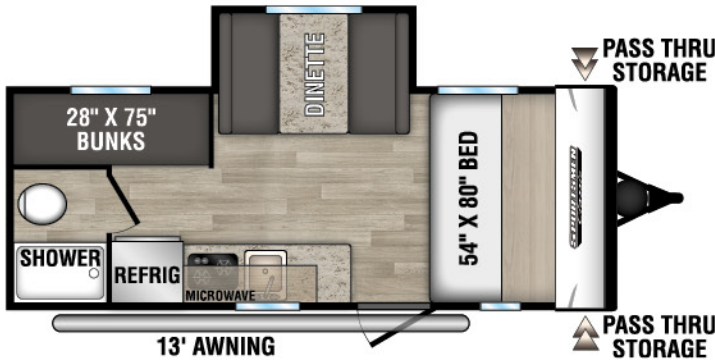


180RBT Uvw - 3,380 | Exterior Length - 21' 9" | Sleeps - 8

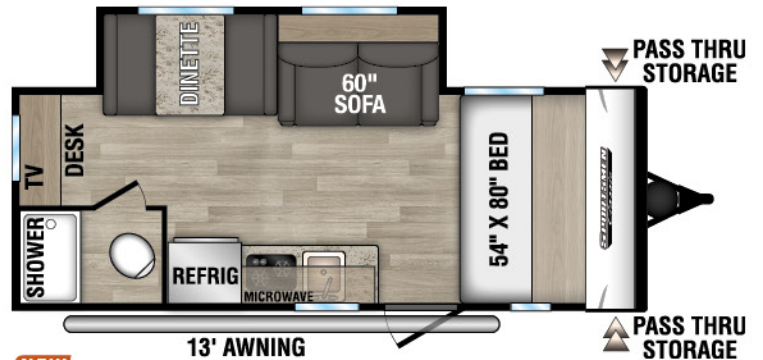
# 2023 SPORTSMEN CLASSIC



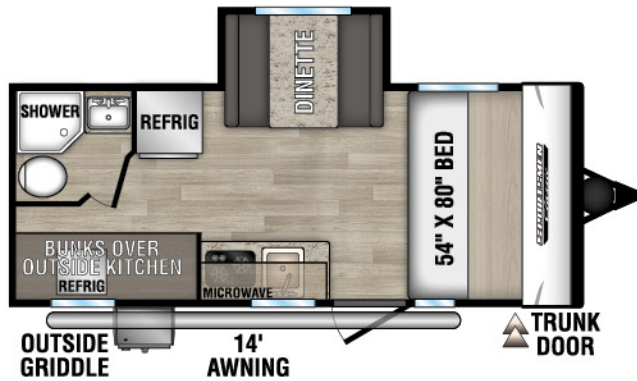
180TH TOY HAULER UUV - 3,340 | Exterior Length - 21' 8" | Sleeps - 4



181BH UUV - 3,070 | Exterior Length - 21' 5" | Sleeps - 5



181SS UUV - 3,520 | Exterior Length - 22' 2" | Sleeps - 4



191BHK UUV - 3,490 | Exterior Length - 22' 1" | Sleeps - 5

## OFF-ROAD PACKAGE

- Aluminum Rims w/15" Mud Tires
- Extra Ground Clearance
- Electronically-Controlled Heated Holding Tank
- Double Entry Step (select models)



Sportsmen Classic