



RECREATIONAL  
VEHICLES

# ESCAPE

ESCAPE  
ULTRA LIGHTWEIGHT TRAVEL TRAILERS



**ESCAPE**  
ULTRA LIGHTWEIGHT TRAVEL TRAILERS

INTERIOR

ESCAPE

## BUILT FOR

AFFORDABLE  
AND ECONOMICAL  
**FUN!**

**ESCAPE** is packed with standards like 78-inch-high interior, queen bed, flip-up solid entry steps, LED lights and power awning.

Some floorplans feature:

- Tip-out tents with KZ's exclusive marine-grade Aqualon fabric w/7-year warranty
- Toy hauler option with cargo ramp and space
- Off-road package with increased ground clearance and mud tires



**WINDOW-VIEW KITCHEN** features seamless countertops, double burner gas cooktop, convection microwave. Digital media stereo with Bluetooth and 12-volt dual USB port includes two 6.5-inch speakers.

E181RD | Kona décor



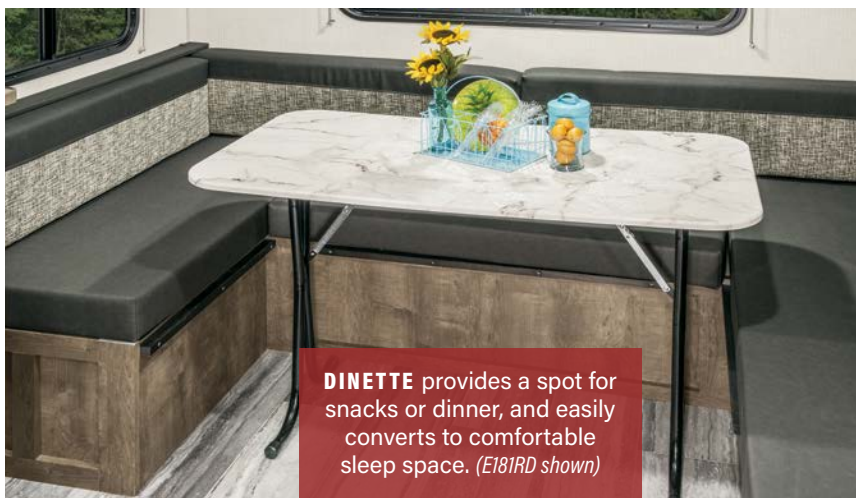
Despite such efficient floorplans, Escape offers a **SURPRISING AMOUNT OF STORAGE**. No nook or cranny has been overlooked.



E181RD | Kona décor

**SMART COMFORTS**

- sink big enough to fill pitchers
- Amish-crafted rail-style Maple cabinetry
- ample storage
- residential-grade linoleum
- microwave with turntable



**DINETTE** provides a spot for snacks or dinner, and easily converts to comfortable sleep space. (E181RD shown)



**FULL BATHROOM**

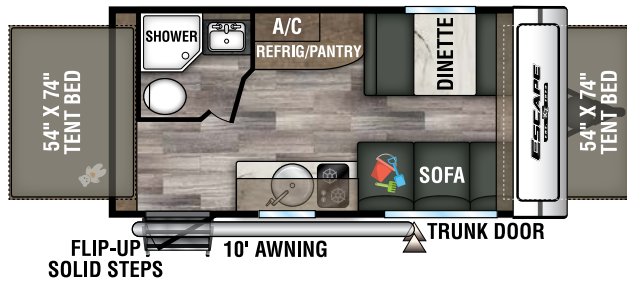
- residential shower
- medicine cabinet
- convenient outlet
- ample storage
- foot-flush toilet

(E181RD shown)

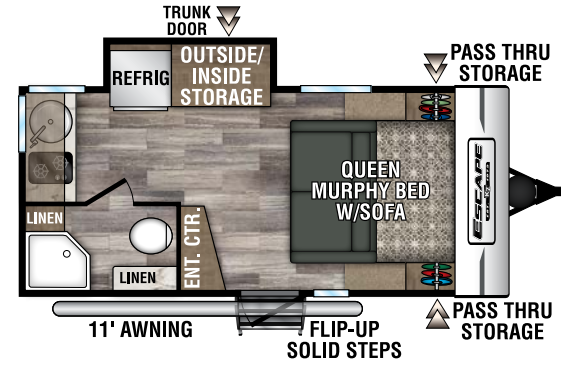


**7 CU FT double-door REFRIGERATOR** has top freezer and veggie bin (shown here). (E181RD shown)

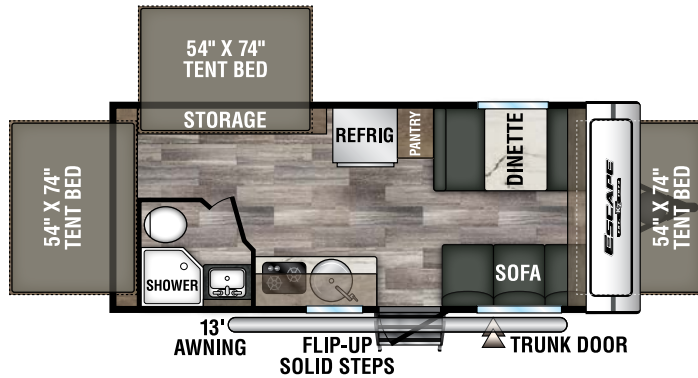
# ESCAPE



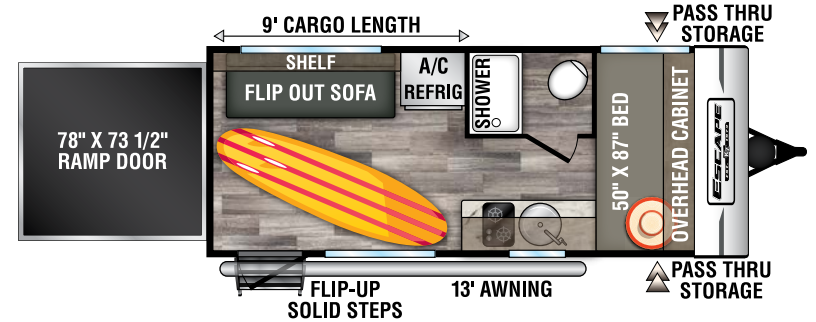
**E160RBT** UVW - 2,760 | Exterior Length - 19' | Sleeps 6



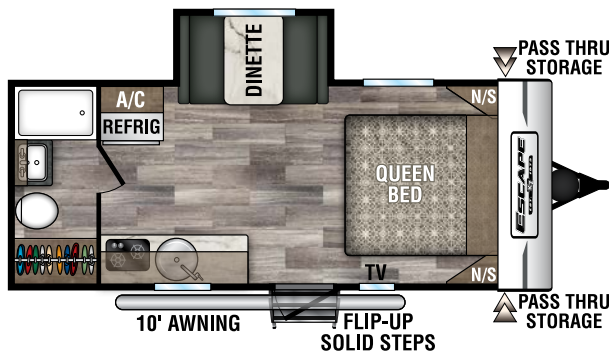
**E171MB** UVW - 3,120 | Exterior Length - 19' 8" | Sleeps 2



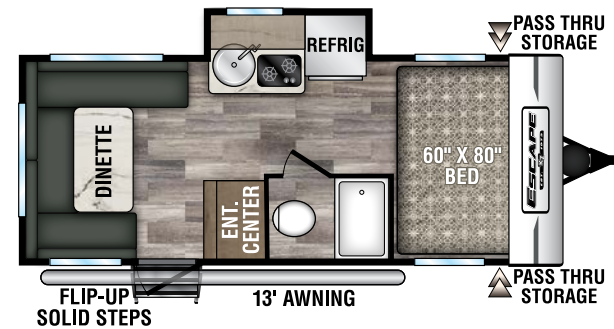
**E180RBT** UVW - 3,260 | Exterior Length - 21' 7" | Sleeps 8



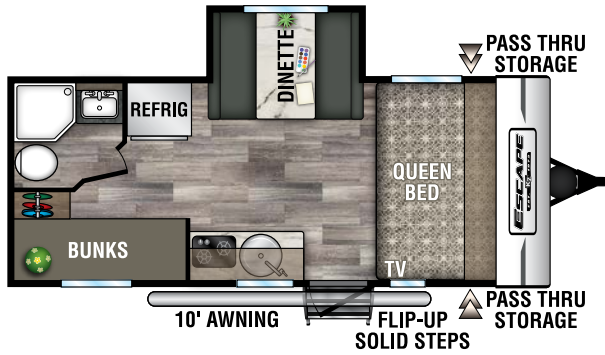
**E180TH** UVW - 3,210 | Exterior Length - 21' 6" | Sleeps 3



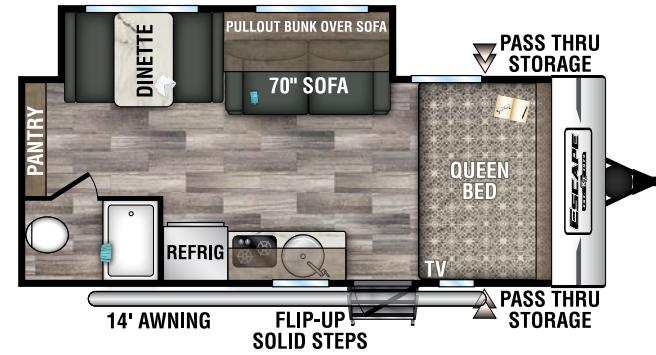
**E181RB** UVW - 3,220 | Exterior Length - 21' 11" | Sleeps 3



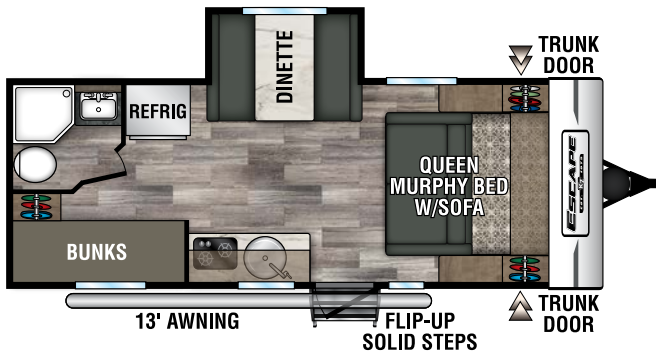
**NEW E181RD** UVW - 3,320 | Exterior Length - 22' 2" | Sleeps 4



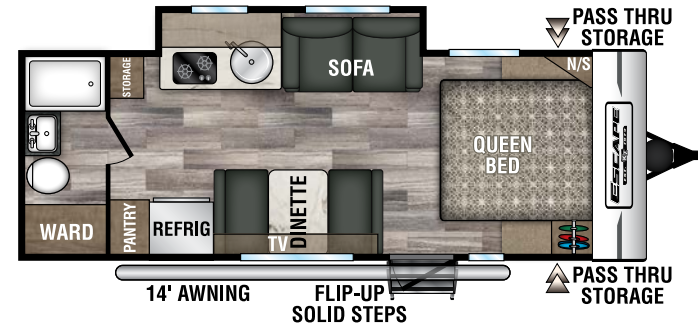
E191BH UVW - 3,320 | Exterior Length - 21' 11" | Sleeps 5



E191SS UVW - 3,680 | Exterior Length - 23' 7" | Sleeps 5

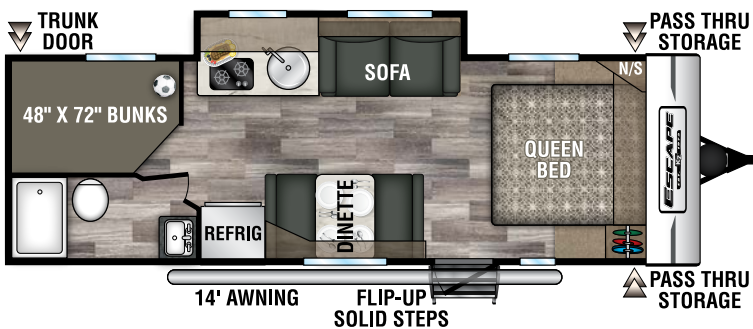


E201BH UVW - 3,600 | Exterior Length - 23' 8" | Sleeps 5



**NEW** E211RB UVW - 3,820 | Exterior Length - 25' | Sleeps 4

## FLEXIBILITY & A NEW DIMENSION OF FUN!



E231BH UVW - 3,890 | Exterior Length - 27' 2" | Sleeps 8



Who says you can't enjoy an economical toy hauler? The **ESCAPE E180TH** offers a **FULL 9-FOOT GARAGE**, which doubles as living/sleeping space.

## STANDARDS

- Alum-a-Tough® Roofing w/12-Year Limited Warranty
- Tinted Windows
- R-7 Insulation
- Diamond Plate Rock Guard
- Rear Bumper w/Sewer Hose Storage
- Self-Adjust Electric Brakes
- Radial Tires
- 20# LP Bottle
- Cable Hookup
- City Water Fill
- Digital TV Antenna
- 12V Converter w/Charger
- 6 GAL LP DSI Water Heater
- Monitor Panel
- Linoleum Throughout
- 2-Burner Cooktop
- Microwave
- 4 CU FT LP/Electric Refrigerator (E160RBT, E180TH, E181RB, E191BH)
- 7 CU FT Double-Door Refrigerator (E171MB, E180RBT, E191SS, E211RB, E231BH)
- Amish-Crafted Rail Style Cabinet Doors w/Modern Handles

- Overhead Cabinets
- LED Interior Lighting
- Shower & Toilet

## OPTIONS

- 13,500 A/C Low Pro (required on E171MB, E180RBT, E191SS, E211RB, E231BH)
- Bamboo Round Sink Cover
- 7 CF Refrigerator (required on E180RBT, E191SS, E211RB, E231BH & must option roof A/C)
- 24" TV w/Inside/Outside Bracket (E180TH, E181RB, E191BH, E191SS, E201BH)
- Aluminum Wheels - 2 (N/A E180RBT, E211RB, E231BH)
- Aluminum Wheels - 4 (E180RBT, E211RB, E231BH)
- Wireless Backup Camera System - Observation
- Front Window (N/A E160RBT, E180RBT)
- Bedspread (N/A E160RBT, E180RBT)
- Retractable Screen Wall (toy hauler only)
- Bedroom Pillow Package

## OFF-ROAD PACKAGE

- Aluminum Rims w/15" Mud Tires

- Extra Ground Clearance
- Electronically-Controlled Heated Holding Tank
- Double Entry Step (select models)

KZ ADVANTAGE PACKAGE  
(MANDATORY OPTION)

## EXTERIOR

- Color Infused Titanium Exterior Fiberglass
- 5/8" T&G Plywood Floor
- 26" Entry w/Flip-Up Entry Step
- 8,000 A/C
- Key-Alike Program for Baggage & Entry Doors
- Aqualon Edge Tent Material
- Folding Grab Handle
- Exterior Speakers
- Spare Tire & Carrier
- 4 - Scissor Style Stabilizer Jacks
- Solar Prep
- Backup Camera Prep
- Nitrogen Filled Tires
- Leash Latch w/Bonus Beverage Opener

## INTERIOR

- 20,000 BTU Furnace
- Seamless Countertops
- Pleated Shades
- Convection Microwave
- Shower Surround
- Plywood Bed Base
- (2) 6.5" Interior Speakers
- Digital Media Stereo w/Bluetooth & 12 Volt Dual USB Port
- Stainless Steel Round Kitchen Sink

KZ CONVENIENCE PACKAGE  
(MANDATORY OPTION)

## EXTERIOR

- Power Awning w/LED Light Strip
- Friction Hinge Entry Door w/Shade Prep
- Double Entry Steps (select models)
- Omnidirectional HDTV Antenna w/Wi-Fi Prep

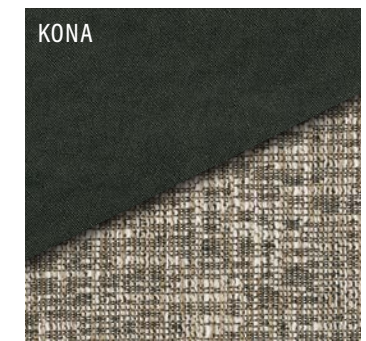
## INTERIOR

- Residential Grade Linoleum
- Rail Style Cabinet Doors
- Interior Control Switches Overhead End Cabinet

Travel Trailers	E160RBT	E171MB	E180RBT	E180TH	E181RB	E181RD	E191BH	E191SS	E201BH	E211RB	E231BH
UVW (Unloaded Vehicle Weight)*	2,760	3,120	3,260	3,210	3,220	3,320	3,320	3,680	3,600	3,820	3,890
Dry Hitch Weight*	360	400	370	400	500	360	490	580	510	450	470
Dry Axle Weight*	2,400	2,720	2,890	2,810	2,720	2,960	2,830	3,100	3,090	3,370	3,420
NCC (Net Carrying Capacity)	740	880	1,240	1,790	780	860	925	1,320	800	1,180	1,110
GVWR	3,500	4,000	4,500	5,000	4,000	4,180	4,245	5,000	4,400	5,000	5,000
Interior Height	78"	78"	78"	78"	78"	78"	78"	78"	78"	78"	78"
Exterior Height w/o A/C (unless noted)**	107"	118"	118"	107"	112"	112"	112"	118"	112"	118"	118"
Exterior Width	90"	90"	90"	90"	90"	90"	90"	90"	90"	90"	90"
Exterior Length	19'	19' 8"	21' 7"	21' 6"	21' 11"	22' 2"	21' 11"	23' 7"	23' 8"	25'	27' 2"
Refrigerator (cu. feet)	4	7	7	4	4	4	4	7	4	7	7
Water Heater Cap. (gal. LP w/DSI)	6	6	6	6	6	6	6	6	6	6	6
Fresh Water Cap. (gal.)	20	20	20	38	20	20	20	38	20	20	20
Waste Water Cap. (gal.)	24	32	24	32	32	30	32	30	32	30	24
Gray Water Cap. (gal.)	32	32	32	32	32	30	32	30	32	30	31
LP Gas Cap. (lbs.)	20	20	20	20	20	20	20	20	20	20	20
Furnace BTUs (1,000s)	20	20	20	20	20	20	20	20	20	20	20
Tire Size	14"	15"	14"	15"	15"	15"	15"	15"	15"	14"	14"
Awning	10'	11'	13'	13'	10'	13'	10'	14'	13'	14'	14'

\*This weight reflects the rolling average unit weight for each model. Your trailer weight will vary according to optional equipment. \*\*This exterior height is with A/C.

## 2020 DÉCOR



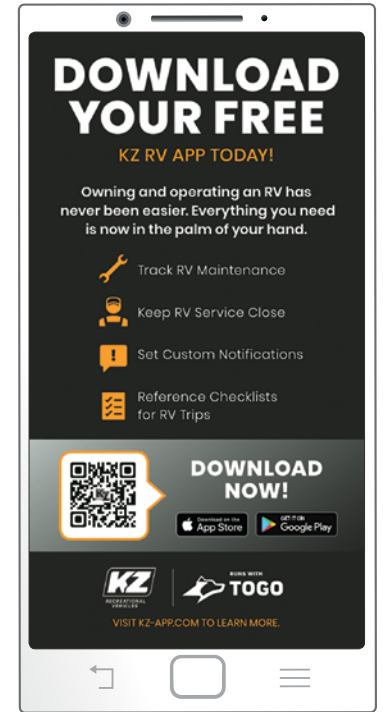
# ESCAPE EXTERIOR FEATURES



**STANDARD FLIP-UP ENTRY STEP**  
solid footing, coming and going. Handy friction hinge and screenshot auto-door-close feature.



**LED-LIT POWER AWNING**  
makes it easy to enjoy relaxing at outdoor gatherings.



**BACKUP CAMERA PREP** allows for easy-to-install wireless backup camera system.

**PASS-THRU STORAGE** is offered on most floorplans.



**EXTERIOR SPEAKERS**



**ALUMINUM RIMS** and nitrogen-filled tires are standard

The exterior wall-mount **BOTTLE OPENER** doubles as a **LEASH LATCH**, and helps prevent your pet from making a getaway at the campsite.



**5/8" TONGUE & GROOVE PLYWOOD**



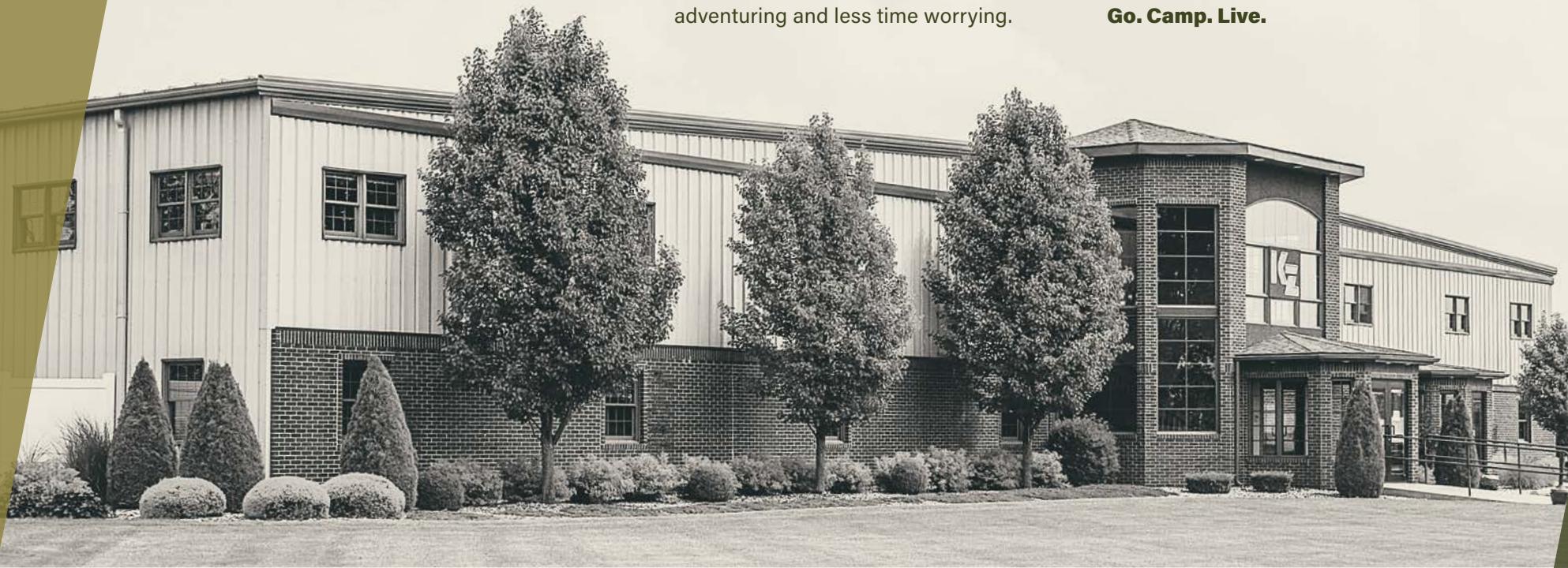
# RECREATIONAL VEHICLES

## HANDCRAFTED TO HIGH STANDARDS

In 1972, Sam King and Daryl Zook built a truck camper—and built a better way to camp. Since then we've built recreational vehicles with a focus on craftsmanship and quality, so you can spend more time adventuring and less time worrying.

When you hitch to a KZ Recreational Vehicle, you can expect adventure, good times, and old-world values. We care about your camping experience. Because your KZ is where the journey starts.

**Go. Camp. Live.**



Dealer:

