

**DURANGO GOLD**

FULL-TIME LUXURY FIFTH WHEELS\*



RECREATIONAL  
VEHICLES

# DURANGO GOLD



**DURANGO GOLD**  
FULL-TIME LUXURY FIFTH WHEELS\*

INTERIOR

DURANGO GOLD

# LIVE THE DREAM

**DURANGO GOLD** checks all the boxes for full-time luxury, with must-have standard features including residential furniture, a chef's kitchen, multiple slideout rooms, washer/dryer prep, king beds, walk-in closet, and a residential shower with built-in seat and glass doors.

Indulgent upgrades include residential-size refrigerator, a second awning, and Off-Grid solar package. Plus KZ's two-year limited warranty, approved for full-time living.



**FULL KITCHEN**  
Four-door, 18 CU FT refrigerator, pantry, kitchen island, coat closet, Surfex wood hallway step and dark accent trim.

G382MBQ | Sea Salt décor

**REAL FURNITURE**  
Solid hardwood legless dining table with pullout leaf, 2 storage-seat chairs and 2 folding chairs. (G381REF shown)



**SPACIOUS LIVING**  
includes recliner seating, hide-a-bed sofa, day/night roller shades and maple-glazed cabinetry. (G382MBQ shown)

G381REF | Havana décor



**ENTERTAINMENT**

- 65-inch LED TV (shown)
- 40-inch wide-view fireplace
- multiple media stereo w/DVD, Bluetooth and 3-zone speaker controls



Enjoy **LUXURY SLEEP** with Gold's all-new 70 x 80-inch walk-around electric-tilt king bed with under-bed storage. Tilt beds improve circulation and breathing, decrease congestion, and improve digestion. (G382MBQ shown)



**CLOSET SPACE**

Deep, extra-large bedroom walk-in closet with mirrored bypass doors and washer/dryer prep. (G381REF shown)



**SERENE BATH** Linen closet, extra-large solid-surface vanity, stainless steel under-mount sink and waterfall faucet (G381REF shown)

**CONSTRUCTION FEATURES**

- 101" Wide-Body Construction
- Extra-Reinforced Heavy-Duty Front Fiberglass Cap
- Radius Front Cap (for increased turning radius on short bed trucks)
- 2" x 3" Welded Aluminum Fore & Aft Floor Joists
- 2" x 2" Welded Aluminum Sidewall Framing
- 5" Welded Aluminum Roof Trusses
- LCI® Hydraulic Slide System w/ Selector Valves
- Steel Powder Coated I-Beam w/Drop-Frame Pass-Thru Storage (offering 160-180 CU FT, F/P specific)
- Lamilux® High-Gloss Fiberglass
- All-Weather Insulation Package (roof, floor, ceiling, endcaps & tanks to R-38)
- R-11 2" Sidewalls (w/EGS metal backing strips to hold all int. cabinets)
- 1-Piece ABS Slideroom Bottoms; Slideroom Floors Insulated to R-24
- 1-Piece, Seamless, Walk-on, Tufflex Roofing Material w/15-Year Warranty
- 45 Degree Aluminum Roof Edge
- Fully-Vented Attic System
- 3/8" Roof Decking
- 5/8" Tongue & Groove, Screwed & Glued Plywood Floor Decking
- Full Drop-Frame Aluminum Skirt on Doorside
- Pex® In-Floor Heated Waterlines & Kitchen Gray Pipes (all waterlines & drainlines are located above all insulation)
- Fully-Heated & Enclosed Underbelly
- Double Insulated & Heated Holding Tanks (R-38 above & below tanks)

**EXTERIOR FEATURES**

- 7,000 LB Dexter® Axles w/ Self-Adjusting Brakes & Height Adjusting Hangers

- 8-Lug Heavy-Duty Aluminum Rims w/16" G-Range Radial Tires
- 100% Exterior LED Running Lights & Taillights
- Electric Awning w/Light Strip
- Propane Bottles on Same Side of Coach for Easy Access (2 x 30 LB each)
- Sealed Battery Storage Compartment on Side of Coach (no battery boxes required)
- Dual Front Baggage Doors
- Slam Latch Baggage Doors w/ Dual Locks
- Partially Painted Front Cap w/ LED Accent Lights
- Frameless Windows
- 3" x 14" In-Floor Straight Line Heating System w/35,000 BTU Furnace
- 12 GAL Gas/Electric Hot Water Heater
- LED Docking Light & Sewer Hookup Light
- Swing-Away Assist Grab Handle
- Underneath Spare Tire w/Hoist
- Roof Ladder
- Deluxe Heated Water Convenience Center (incl. black tank flush, power fresh tank water fill, winterizing system, outside shower & dry camping water siphon system)
- Fully-Finished, Heated & Sealed Basement Storage Compartment
- Pre-Wire for Exterior TV

**LIVING ROOM / KITCHEN FEATURES**

- Residential-Size Pullout Trashcan in Kitchen
- Pullout Spice Rack (most models)
- Dual Pullout Pots & Pans Drawers under Refrigerator & Stove (where available)
- Removable Silverware Tray
- Storage Shelf under Kitchen Sink
- All Kitchen OH Cabinets have Shelf
- Heavy-Duty 100 LB Drawer Glides on Every Drawer
- Baltic Birch Drawer Boxes
- LED-Lighted Kitchen Cabinet Toe Kicks (most models)

- Large Dining Table w/Pullout Leaf, 2 Storage Seat Chairs & 2 Folding Chairs
- Kitchen Window (most models)
- Hidden Cabinet Door Hinges
- 5" Cabinet Hardware
- 3/8" Re-Bond Carpet Pad w/22 OZ Residential Carpet
- XL Toggle Light Switches
- Power Vent Fan in Second Bath (366FBT, 385FLF, 386FLF)
- All LED Ceiling & Cabinet Lights w/Multiple On/Off Switches

**BATHROOM / BEDROOM FEATURES**

- Residential 1-Piece Fiberglass Shower Stall w/Built-In Seat & Glass Doors
- Shower Skylight
- XL Solid Surface Bath Vanity w/Stainless Steel Sink
- Porcelain Foot-Flush Toilet
- All LED Lights in Bed & Bath w/ Multiple Switches
- Heavy-Duty 100 LB Drawer Glides on all Drawers
- Extra-Wide Bed & Bath Hallway (most models)
- Pocket Door from Hall to Bath (most models)
- Bath Towel Bar & Towel Loop (where applicable)
- 12V Fan
- XL Bath Linen Closet
- XL Deep Bedroom Walk-In Closet
- Dual Washer & Dryer Prep
- XL Under-Bed Storage
- Luxurious Bedspread & Pillow Shams

**OPTIONS (EXTERIOR)**

- Dual Pane Windows (frameless)
- Wireless Backup Camera - Observation & Vision S
- "Off the Grid" Solar Package\*
- Flex-Air Pin Box
- 2nd LED Lighted Power Awning (G356RLT, G366FBT, G382MBQ, G384RLT)
- Generator Prep (includes start/stop harness)
- 6.5KW LP Onan Generator (requires prep)
- Slideout Cover Package (triple slides)

- Slideout Cover Package (quad slides)
- Slideout Cover Package (5 slides)
- Heat Pumps on Both A/Cs
- 3rd A/C Ducted (15,000 BTU)
- 32" Exterior TV w/Bracket

**OPTIONS (INTERIOR)**

- House Residential Refrigerator w/1200W Inverter (18 CU FT) IPO 18 CU FT Gas/Electric Refrigerator (N/A CSA option)
  - Power Vent Fan in Bathroom
  - Queen Pillowtop Mattress 60" x 80" (Elec. Tilt)
  - Theater Seating IPO Hide-A-Bed (G382)
  - Full-Timer's Hardwood Desk IPO Dinette Table
  - Ottoman w/Storage
- \*Cannot get House Residential Refrigerator w/"Off the Grid" Solar Package*

**KZ ADVANTAGE PACKAGE (MANDATORY OPTION)****EXTERIOR**

- 6-Point Hydraulic Auto Leveling
- Polar White High Gloss Gelcoat Exterior Fiberglass
- Painted Fiberglass Front Cap
- 6-Sided Aluminum Framing
- Flip-Up Entry Steps (main entry)
- 50 AMP Service
- (2) 15K Ducted A/Cs w/Quiet Cool Ducting System
- 5/8" Tongue & Groove Plywood Floor
- Key-Alike for Baggage & Entry Doors
- Friction Hinge Entry Door w/ Shade Prep & Screenshot Features
- X-Large Folding Grab Handle
- Undermount Spare Tire
- Equa-Flex® Suspension
- Nitrogen-Filled Tires
- Battery Disconnect
- Black Tank Flush
- Backup Camera Prep
- Roof-Mounted Solar Prep w/ Connection
- All Weather Insulation Package (heated, insulated & enclosed underbelly plus foil in floor, roof, front, rear)

- 2" Towing Receiver Hitch w/4 Pin Wire Harness Connection (3,000 LB tow rating & 300 LB hitch rating)
- Roof Ladder
- Fully-Vented Attic System w/2 Attic Vents
- Leash Latch w/ Bonus Beverage Opener

**INTERIOR**

- Maple Glazed Cabinetry
- Glazed Solid Hardwood Slideout Fascia
- Solid Surface Countertops w/ Deep Undermount Stainless Steel Kitchen Sink w/Sink Cover
- Chef's Appliance Package (2-piece SS gas cooktop w/ built-in oven & 30" convection microwave)
- Stainless Steel Dishwasher
- Custom Wine Rack in Pantry (most models)
- Central Vac System w/ Attachments
- Power Vent Fan in Main Area
- Theater Seating w/Powered Recline, Heat & Massage Features
- Tri-Fold Sleeper Sofa
- Solid Hardwood Dinette Table (legless) w/4 Chairs
- (3) Motion Sensor Lights (entry, closet, basement)
- 40" Wideview Fireplace
- 50" LED TV
- Multiple Media Stereo w/DVD/ Bluetooth & 3 Zone Speaker Controls
- (2) 6.5" Interior Speakers
- 12V Dual USB Charging Station
- Dual Day/Night Roller Shades
- Porcelain Foot-Flush Toilet
- Stainless Steel Bathroom Sink w/Waterfall Faucet
- Plywood Bed Base
- Electric Tilt King Bed 70" x 80"
- Bedroom Fireplace
- 32" Bedroom LED TV
- 7' Tall Main Slide Ceiling Height
- Pocket Door for Bathroom and Bedroom

**KZ CONVENIENCE PACKAGE (MANDATORY OPTION)****EXTERIOR**

- KZ Engage Powered by OneControl w/7" Screen (control system monitors tank levels & battery levels, controls sliderooms, leveling system, awnings, dimmable interior lighting, HVAC controls: includes Wi-Fi prep & connect anywhere prep for full function access by mobile device)
- Power Awning w/LED Light Strip
- 16" G-Range Tires w/Aluminum Wheels
- Magnetic Catches for Baggage Doors
- Omnidirectional HDTV Antenna w/Wi-Fi Prep
- LED Lights in Exterior Speakers

**INTERIOR**

- Residential-Grade Linoleum
- 18 CU FT Gas/Electric Refrigerator w/Temperature Controls
- Matte Black Residential Kitchen Faucet w/Spring Sprayer
- Surfex Wood Step in FW Hallway
- Wood Accent Trim on Corners/ Entry Doors
- Vision S Prep (blind spot monitoring)

**BONUS FEATURES**

- 2-Year Limited Warranty (see flyer)
- Lightest high-profile, wide body, luxury fifth wheels in the industry (average weight is 12,000 LBS)
- KZ has received the Dealer Satisfaction Index Award for 19 years
- KZ's 48 years of stable, dedicated manufacturing experience, coupled with its predominantly Amish workforce, heritage and commitment to superb quality, allow us to produce the best value luxury fifth wheel available.



**THEATER SEATING** with heat, massage, LED-lighted cup holders and power recline feature



**CHEF'S APPLIANCE PACKAGE**

- 30-inch convection microwave
- 3-Burner gas range
- Built-in oven



**4-DOOR 18-CUBIC-FOOT REFRIGERATOR** allows full timers to stock plenty of freezer and refrigerated items



**CENTRAL VACUUM** with multiple attachments, stores out of sight



Residential-Size **PULLOUT TRASHCAN**



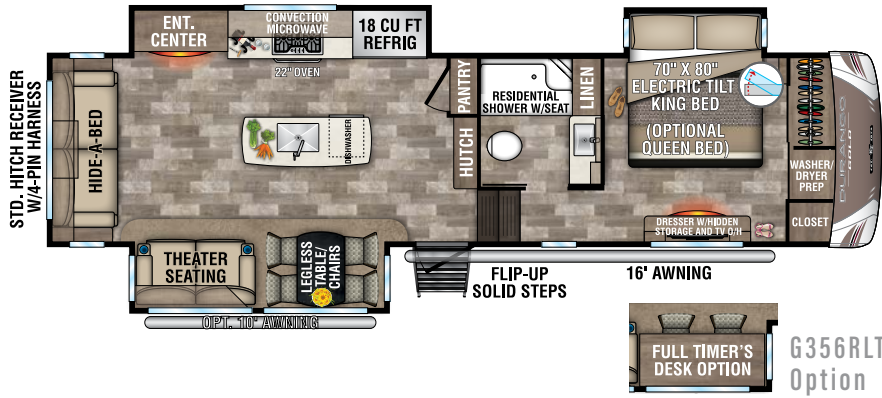
Stainless Steel **DISHWASHER**



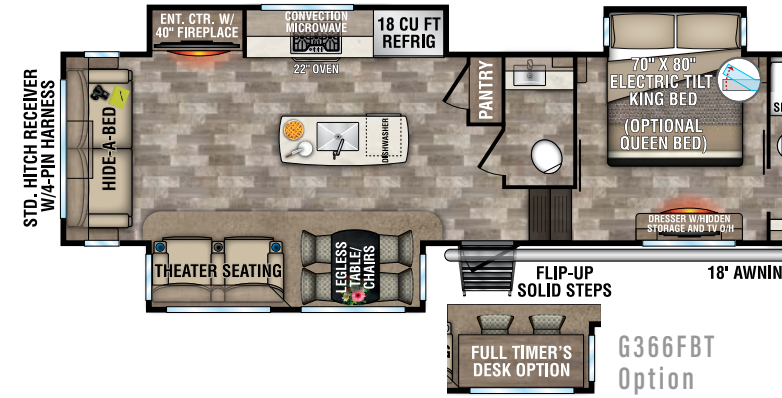
Under-mount **BATHROOM STAINLESS STEEL SINK** with waterfall faucet



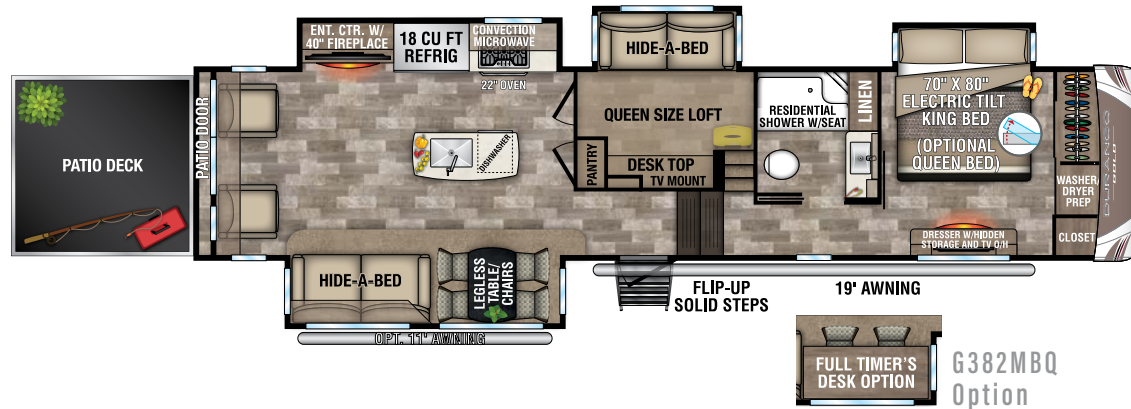
Built-in dresser offers **HIDDEN STORAGE FOR VALUABLES**



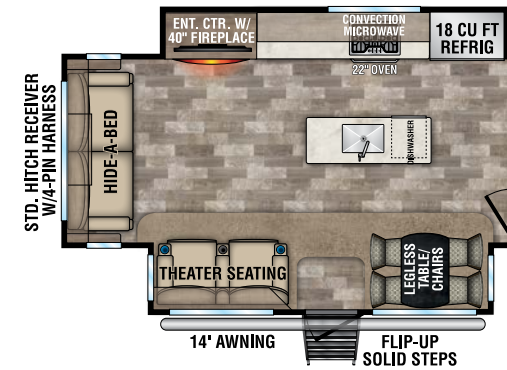
**G356RLT** UVW - 11,560 | Exterior Length - 35' 6" | Sleeps 4



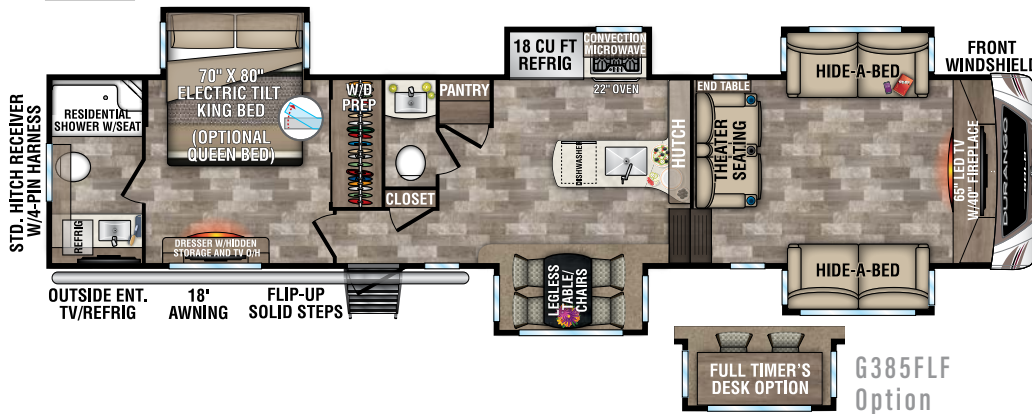
**G366FBT** UVW - 12,060 | Exterior Length - 39' 10" | Sleeps 4



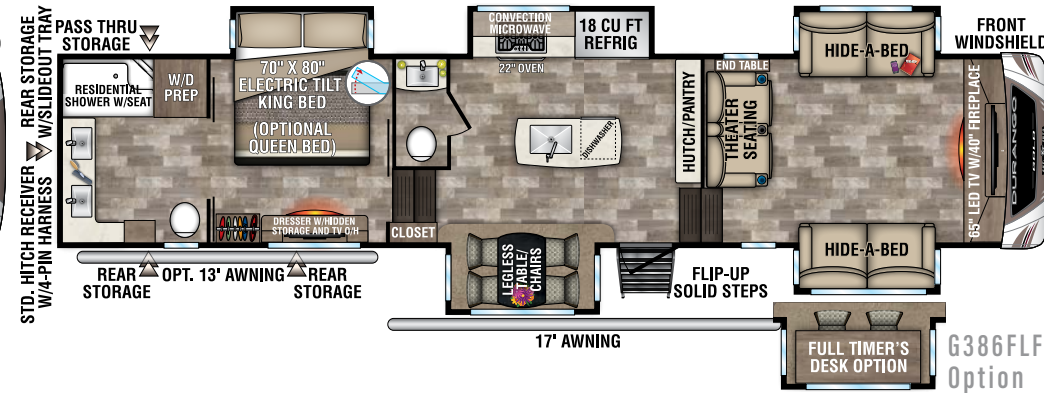
**G382MBQ** UVW - 13,310 | Exterior Length - 40' 4" | Sleeps 6



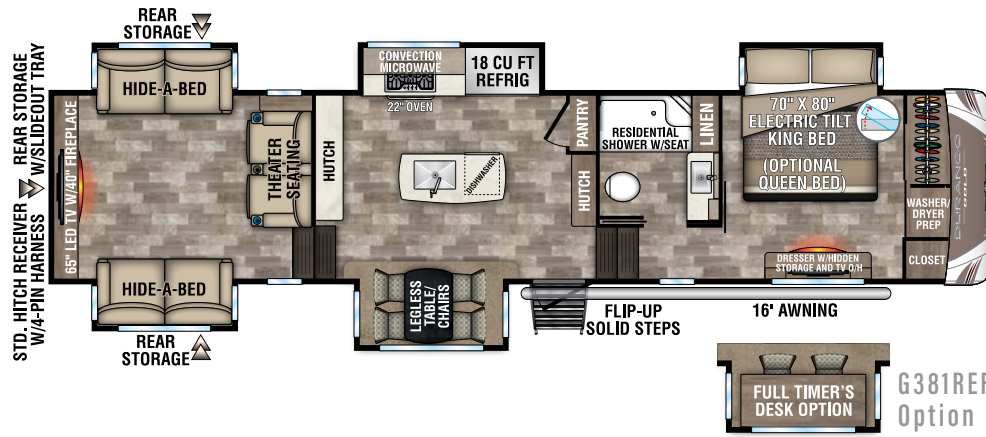
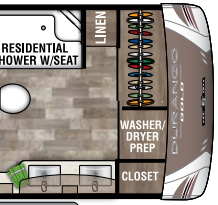
**NEW G383RLT** UVW - 12,590 | Exterior Length - 37' 10" | Sleeps 4



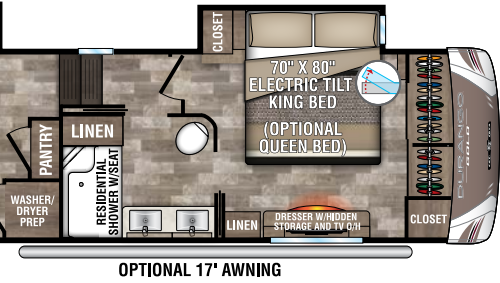
**G385FLF** UVW - 13,090 | Exterior Length - 41' 10" | Sleeps 6



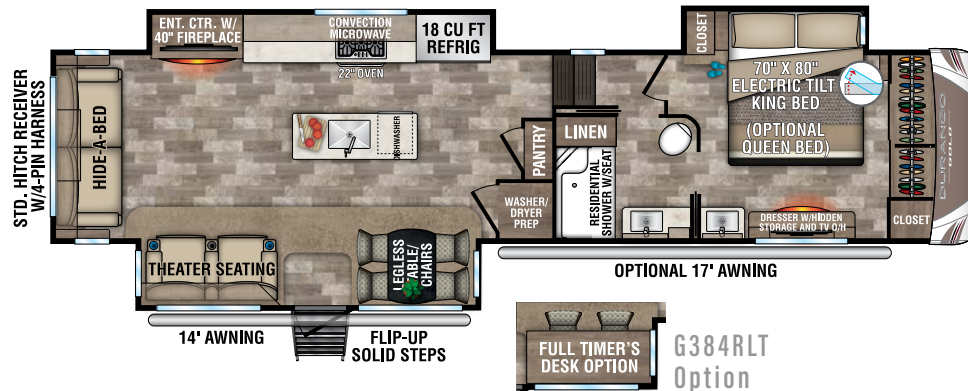
**NEW G386FLF** UVW - 13,290 | Exterior Length - 41' 11" | Sleeps 6



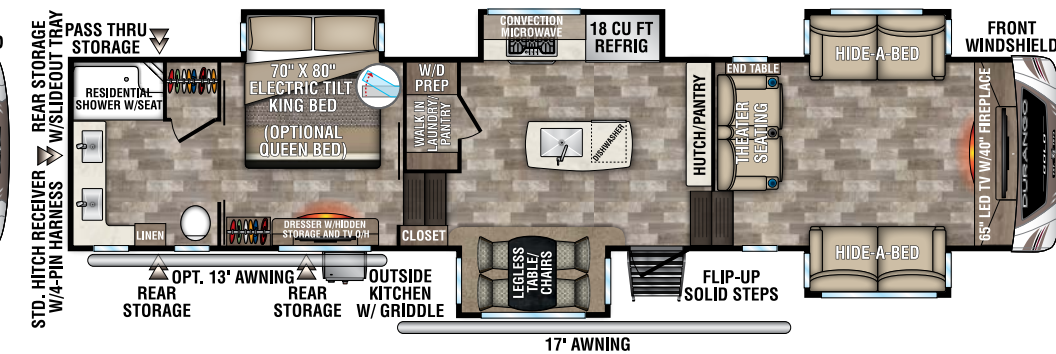
**NEW** G381REF UVW - 13,000 | Exterior Length - 40' 6" | Sleeps 6



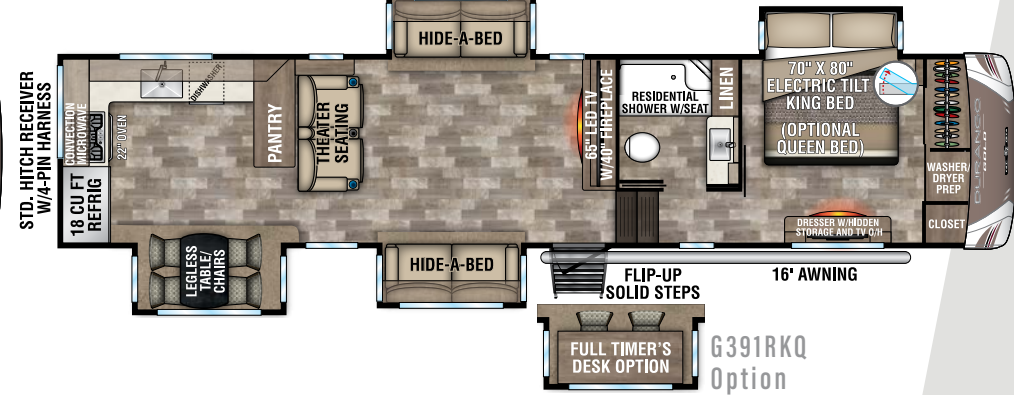
Exterior Length - 40' 3" | Sleeps 4



G384RLT UVW - 12,330 | Exterior Length - 39' 10" | Sleeps 4



**NEW** G387FLF UVW - 13,470 | Exterior Length - 41' 11" | Sleeps 6



**NEW** G391RKQ UVW - 12,390 | Exterior Length - 40' 11" | Sleeps 6

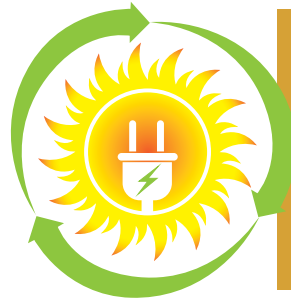
Luxury Fifth Wheels	G356RLT	G366FBT	G381REF	G382MBQ	G383RLT	G384RLT	G385FLF	G386FLF	G387FLF	G391RKQ
UVW (Unloaded Vehicle Weight)*	11,560	12,060	13,000	13,310	12,590	12,330	13,090	13,290	13,470	12,390
Dry Hitch Weight*	2,390	2,300	2,170	2,150	2,710	2,620	2,520	2,700	2,720	2,230
Dry Axle Weight*	9,170	9,760	10,830	11,160	9,880	9,710	10,570	10,590	10,750	10,160
NCC (Net Carrying Capacity)	3,435	2,935	3,000	2,690	3,410	3,870	3,110	2,910	2,730	3,610
GVWR	14,995	14,995	16,000	16,000	16,000	16,000	16,200	16,200	16,200	16,000
Interior Height	80"	80"	80"	80"	80"	80"	80"	80"	80"	80"
Exterior Height w/ A/C	13' 6"	13' 6"	13' 6"	13' 6"	13' 6"	13' 6"	13' 6"	13' 6"	13' 6"	13' 6"
Exterior Width	101"	101"	101"	101"	101"	101"	101"	101"	101"	101"
Exterior Length**	35' 6"	39' 10"	40' 6"	40' 4"	40' 3"	39' 10"	41' 10"	41' 11"	41' 11"	40' 11"
Refrigerator (cu. feet)	18	18	18	18	18	18	18	18	18	18
Water Heater Cap. (gal. G/E w/DSI)	12	12	12	12	12	12	12	12	12	12
Fresh Water Cap. (gal.) [Including Water Heater Capacity]	67	67	67	67	67	67	67	67	67	67
Waste Water Cap. (gal.)	53	53	53	53	53	53	53	53	53	53
Gray Water Cap. (gal.)	93	93	93	93	93	93	93	93	93	93
1/2 Bath Cap. (gal.)	N/A	53	N/A	N/A	40	N/A	53***	53	N/A	N/A
LP Gas Cap. (lbs.)	60	60	60	60	60	60	60	60	60	60
Furnace BTUs (1,000s)	35	35	35	35	35	35	35	35	35	35
Tire Size	16"	16"	16"	16"	16"	16"	16"	16"	16"	16"
Awning	16'/10' opt.	18'/11' opt.	16'	19'/11' opt.	14'/17' opt.	14'/17' opt.	18'	17'/13' opt.	17'/13' opt.	16'

\*This weight reflects the rolling average unit weight for each model. Your trailer weight will vary according to optional equipment.  
 \*\*Exterior length is measured from center of hitch pin to rear wall.  
 \*\*\*Also includes kitchen

2020 DÉCOR

HAVANA

SEA SALT



Harness the power of the sun to run your TV and outlets. Roof mounted solar prep standard. **Optional "Off the Grid" solar package** includes 190W panel, 1200W inverter and interior control center.



**FLEXIBLE**

**TUFFLEX ROOFING**  
by Dacor Products  
15-YEAR WARRANTY!



**REFLECTIVE**



**PUNCTURE RESISTANCE**



Heated, insulated & enclosed underbelly plus foil in floor, roof, front, rear! R-11 sidewalls, R-38 roof and floor.



Two attic vents are in each RV, providing vital escape routes for unwanted moisture that accumulates during use.



# DURANGO GOLD

## EXTERIOR FEATURES



**STANDARD FLIP-UP ENTRY STEP**  
solid footing, coming and going. Handy friction hinge and screenshot auto-door-close feature.



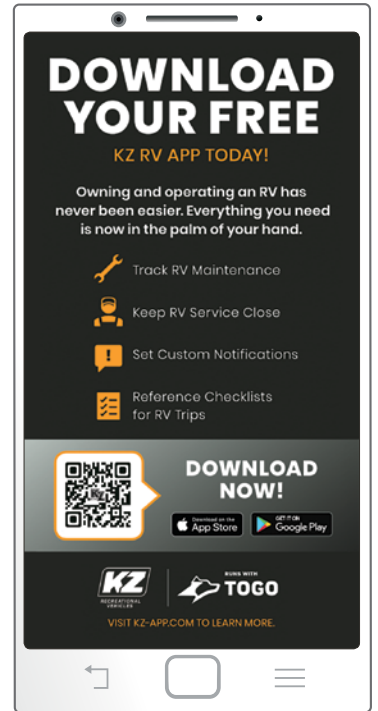
**CENTRALIZED WATER COMMAND CENTER**  
well-lit, heated & all systems conveniently located



**160 CUBIC FOOT BASEMENT STORAGE**  
motion-lit, fully finished, heated and sealed basement storage with magnetic catch, slam-latch dual-lock baggage doors



**REAR EXTERIOR STORAGE**  
and 52" x 72" slideout storage tray are a fulltimer's dream storage setup!



**BACKUP CAMERA PREP**  
ready for wireless observation camera system



**ALUMINUM WHEELS**  
8-lug heavy-duty aluminum rims with 16-inch G-range radial tires



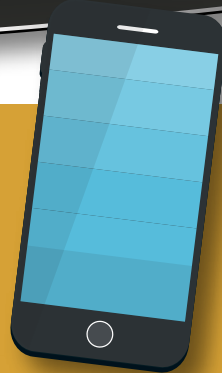
**POWER AWNING WITH LED LIGHT STRIP**  
makes evening gatherings magical



**HEATING & COOLING** Standard 3 x 14-inch foam-core in-floor straight-line heating system with 35K BTU furnace and two 15K BTU ducted roof A/Cs w/Whisper Quiet cooling system (opt. 3rd ducted 15K A/C is part of Whisper Quiet cooling system).



**5/8" TONGUE & GROOVE PLYWOOD**



**KZ ENGAGE**

powered by OneControl with a 7-inch screen mounted on an interior wall right by the entrance door (app can be downloaded to a smart phone or tablet). The control system monitors tank and battery levels, controls sliderooms, leveling system, awnings, dimmable interior lighting, HVAC controls: includes Wi-Fi prep and Connect Anywhere prep for full function access by mobile device.



**STANDARD 6-POINT HYDRAULIC AUTO-LEVELING SYSTEM** does all the work



G382MBQ comes with a **REAR PATIO SYSTEM**, which greatly enhances your camping experiences. It includes a three-season patio door, step, awning and railing.

**LUXURY FULL-TIME FIFTH WHEELS**

- 1 R-11 LAMINATED SIDEWALLS**  
aluminum framed with high density solid block insulation
- 2 ALL WEATHER INSULATION PACKAGE**  
heated, insulated and enclosed underbelly plus foil in floor/roof/front/rear. (dedicated heat duct in the underbelly)
- 3 R-38 INSULATED FLOOR AND UNDERBELLY**
- 4 R-38 INSULATED ROOF**
- 5 R-38 INSULATED FRONT AND REAR WALLS**
- 6 5/8" TONGUE AND GROOVE PLYWOOD** some of our competitors use OSB board
- 7 1" THICK BAGGAGE DOORS**  
some of our competitors have 1/2" baggage doors
- 8 FULLY VENTED ATTIC SYSTEM**  
w/2 attic vents
- 9 STRENGTH OF FRAME**  
2" towing receiver w/4 pin wire harness connection (3000 lb. tow rating & 300 lb. hitch rating)
- 10 101" WIDE BODY**
- 11 OFF-THE-GRID SOLAR PACKAGE**  
(optional) includes 190W panel, 1200W inverter and interior control center

# DURANGO GOLD





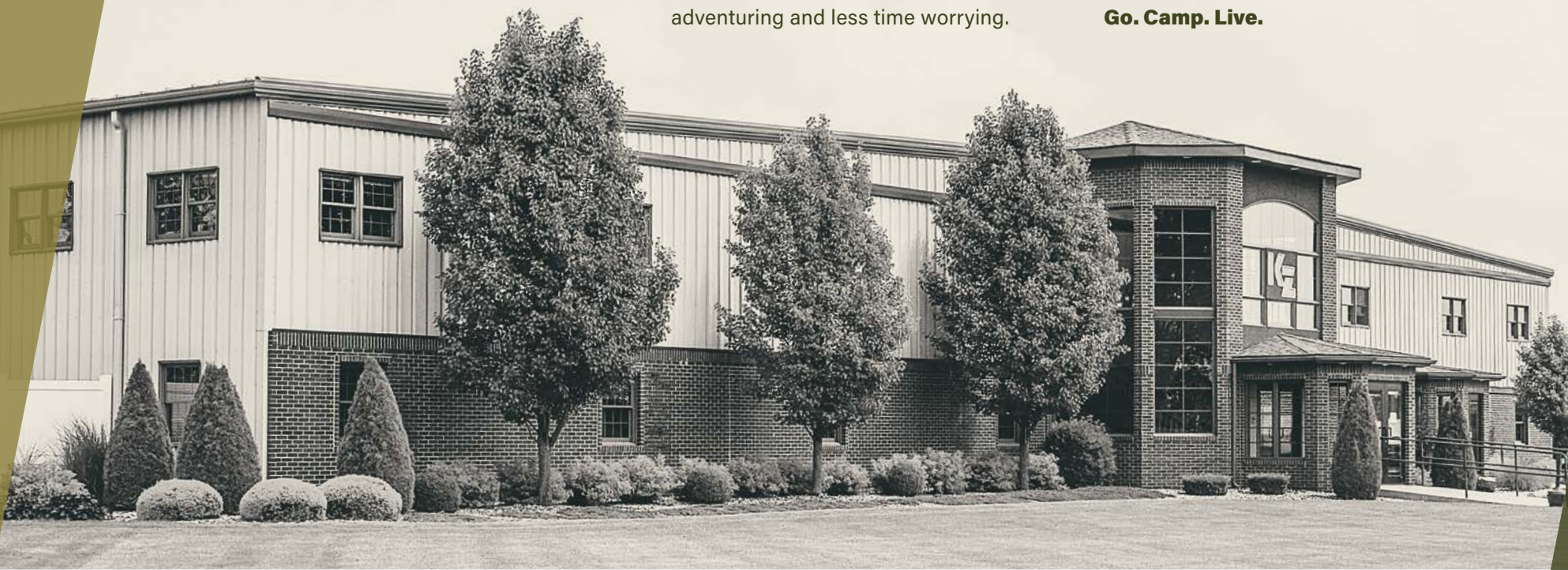
# RECREATIONAL VEHICLES

## HANDCRAFTED TO HIGH STANDARDS

In 1972, Sam King and Daryl Zook built a truck camper—and built a better way to camp. Since then we’ve built recreational vehicles with a focus on craftsmanship and quality, so you can spend more time adventuring and less time worrying.

When you hitch to a KZ Recreational Vehicle, you can expect adventure, good times, and old-world values. We care about your camping experience. Because your KZ is where the journey starts.

**Go. Camp. Live.**



The KZ **True 2 Warranty** is a **2-year hitch-to-bumper limited warranty** that’s true to its name. The gold standard in RV protection, True 2 provides double the coverage of the industry norm. Plus, our warranty is backed by the craftsmanship and quality we’re known for, so you can Go. Camp. Live. Wherever your adventure takes you, know that you’re covered in your KZ.



Portions of this brochure were used with the expressed authority of Dexter Axle, but Dexter Axle is not responsible for the accuracy of the information contained herein.

Dealer:

