

KZ SPORTSMEN

destination trailers & fifth wheels

KZ
Est. 1972

SPORTSMEN

destination trailers & fifth wheels



RELAX IN STYLE!

Spend more quality time at your perfect lake spot. **SPORTSMEN DESTINATION TRAILERS** offer our most residential living experience, with spacious floorplans and all the best amenities, like 70 x 80-inch king beds and washer/dryer prep. Ample storage, residential appliances and super-sized panoramic window views make this travel trailer comfy and livable for the duration. Your favorite camping spot awaits!



362DB : Walnut décor

STAY AWHILE

Spacious slideouts, comfy theater seating with heat and massage, and all the entertainment features. (363RL shown)



KITCHEN

- stainless sink with hi-rise faucet
- house-sized refrigerator
- gas cooktop with glass cover and oven
- microwave and range hood
- spacious dining (362DB shown)

BEDROOM BLISS

Closet with washer/drier prep, or use the space for shelving. Walk-around 70 x 80-inch pillow top king and window-view dresser, full-size closet with mirrored bypass doors, with more storage cabinets below. (362DB shown)



363RL : Walnut décor

LIVE LARGE
 Super-sized double slideouts with panoramic windows and seating on three sides, standard LED TV and 30-inch fireplace are included in the 363RL.

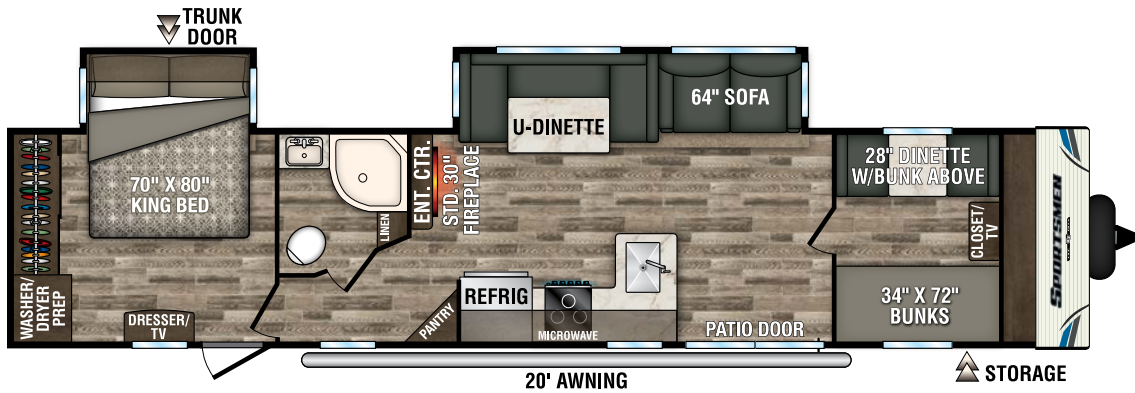
SPA BATH
 Radius shower with surround and skylight, mirrored medicine cabinet, foot-flush toilet, power vent, and monitor panel at sink. (363RL shown)



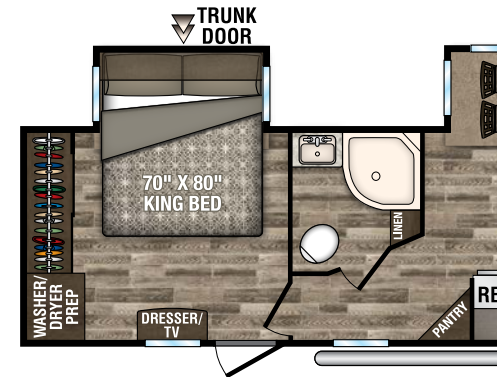
RELAX & RECLINE
 Theater seats with heat, massage and LED accent lights recline together or individually. (363RL shown)

ELBOW ROOM
 Food prep spaces boast wider doorways, solid wood dining table with expansion leaf, and four chairs with hinged under-seat storage. (363RL shown)





362BH **NEW**



STANDARDS

- KZ Exclusive Tough Shield Exterior Metal
- 5/8" Tongue & Groove Plywood Floor
- New Aerodynamic Front Profile
- Diamond Plate Rock Guard on Front of Travel Trailers
- Enclosed Pin Box on FW's
- 3/8" Fully Walk-On Roof Decking
- 1-Piece Seamless Roof w/ SuperFlex® Roofing Material
- Awning w/Drip Rail & Spouts
- Tinted Windows
- Super-Sized Panoramic Slideout Window
- Radius Entry Door
- Smooth Screwless Baggage Doors
- LED Pass-Through Storage Light
- Cable Hookup
- Digital TV Antenna w/Booster
- Self-Adjusting Electric Brakes
- Radial Tires
- Rear Bumper w/Sewer Hose Storage
- Winter Bypass Kit
- 2 or 4 Stabilizer Jacks (model specific)
- Outside Shower
- (2) 30# Gas Bottles w/Bottle Cover
- 30 AMP Service
- 13,500 BTU A/C
- 3-Burner Cooktop
- Range Hood w/12V Light & Exhaust Fan
- Microwave w/Turntable

- Oven
- Acrylic Sink w/High-Rise Faucet
- Roller Ball Bearing Drawer Guides
- Large Overhead Cabinets
- LED Interior Lighting
- Monitor Panel
- Built-In Medicine Cabinet w/Mirror in Bath
- Shower Surround
- Power Vent in Bath
- Skylight over Shower
- Reversible Quilted Comforter
- Main Bedroom Roof Vent

OPTIONS

- Color Infused Ivory Exterior Fiberglass
- 15,000 BTU A/C IPO 13,500 BTU A/C
- 2nd A/C (13,500 BTU)
- Bedroom LED TV w/Inside/Outside Bracket
- Radiant Technology Package (foil in floor, roof, front, rear)
- Freestanding Dinette Table & 4 Chairs IPO Dinette (required on 363FL, 364BH)
- Tri-Fold HAB Sofa IPO Jackknife (required on 363FL, 363RL, 364BH)
- Plumb for Washer/Dryer w/50 AMP & 2nd A/C prep (STD on DTs) (only 50 AMP standard on 364BH)
- Theater Seating w/Heat & Massage Features (required on 363RL)
- Front & Rear Electric Stabilizer Jacks

- Aluminum Wheels
- MaxxAir Vent Fan LR or Bath
- Wireless Backup Camera System - Observation
- Bumper Mount Grill
- Roof Ladder
- Destination PKG - Add Spare Tire & Alumitread Entry Steps

KZ ADVANTAGE PACKAGE (MANDATORY OPTION)

EXTERIOR

- New Aerodynamic Front Profile
- 5/8" T&G Plywood Floor
- Key-Alike for Baggage & Entry Doors
- Friction Hinge Entry Door
- Large Folding Grab Handle
- Power Front Jack
- Equa-Flex® Suspension
- Nitrogen-Filled Tires
- Exterior Speakers
- Battery Disconnect Switch
- Black Tank Flush
- Toylok
- Backup Camera Prep
- Solar Prep
- Climate Package (heated, insulated & enclosed underbelly)

INTERIOR

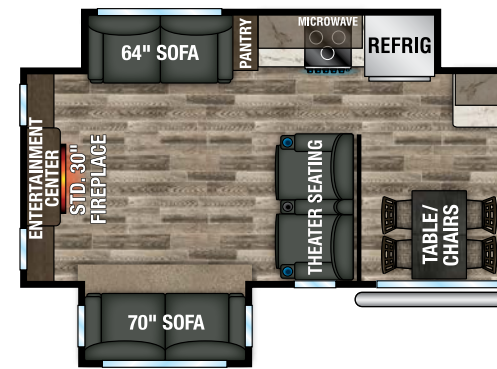
- Seamless Countertops w/Deep Undermount Stainless Steel Kitchen Sink
- Sink Cover

- Drop-In Cooktop w/Glass Cover & Oven
- Kitchen Skylight
- 36" Storage Bins in Booth Dinette
- Bright White LED Light Strip above Main LR Slide Room(s)
- Jackknife w/Middle Console & Bolster Arms
- 2 Motion Sensor Lights
- 30" Fireplace
- LED TV
- Multiple Media Stereo w/ DVD/Bluetooth/NFC Wireless Connectivity
- (2) 6.5" Interior Speakers
- 12V Dual USB Port
- Pleated Shades
- Foot-Flush Toilet
- Plywood Bed Base
- Upper Bunk Windows (select models)
- Pillowtop Mattress
- Push Back Recliners (select models)
- Wider Pocket/Passage Interior Doors

KZ CONVENIENCE PACKAGE (MANDATORY OPTION)

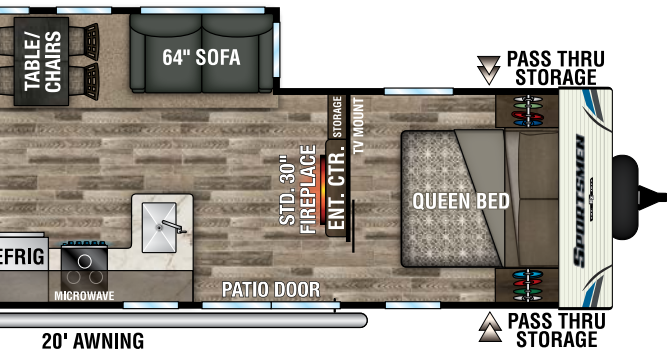
EXTERIOR

- Power Awning w/LED Light Strip
- Magnetic Baggage Door Catches
- Omnidirectional HDTV Antenna
- LED Lights in Exterior Speakers



INTERIOR

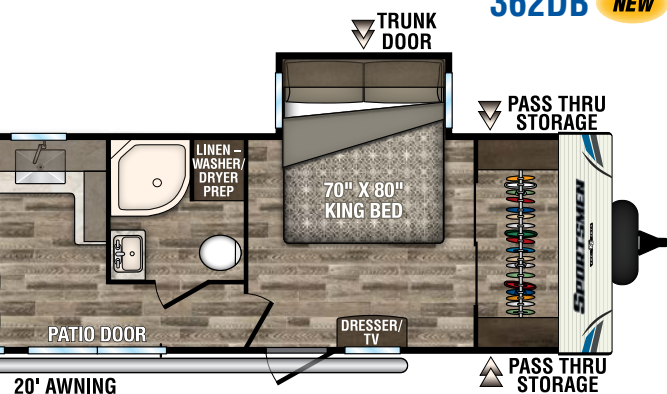
- Residential Grade Linoleum
- 8 CU FT Gas/Electric Refrigerator (N/A in TTs, 110V in TTs)
- Stainless Steel Residential Kitchen Faucet w/Pulldown Sprayer
- Surfex® Wood Step in FW Hallway
- Interior Control Switches on OH End Cabinet
- Dark Accent Trim on Corners/Entry Doors
- Electric Outlet in Bunk Area



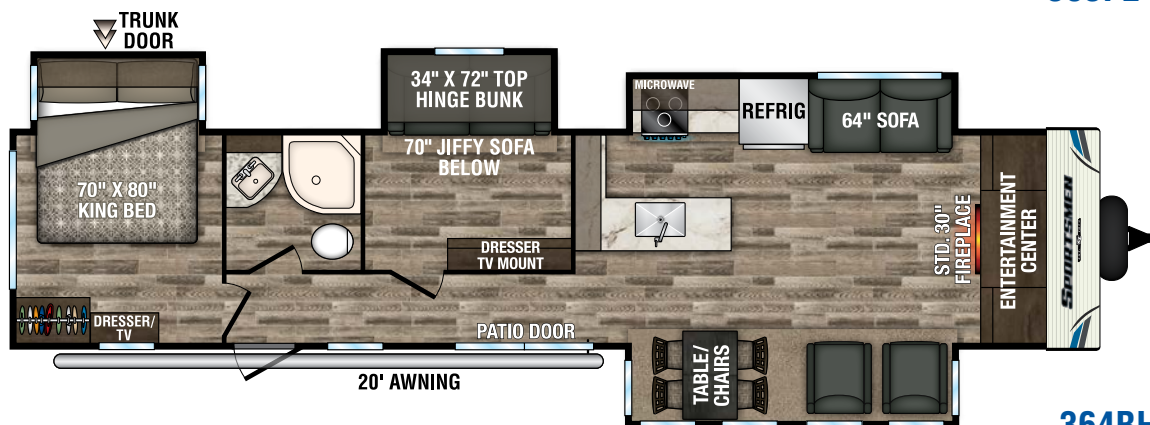
362DB *NEW*



363FL



363RL *NEW*



364BH

Sportsmen Destination Trailers	362BH	362DB	363FL	363RL	364BH
UVW (Unloaded Vehicle Weight)*	8,150	8,530	8,910	8,740	9,580
Dry Hitch Weight*	1,150	1,170	1,460	1,220	1,830
Dry Axle Weight*	7,000	7,360	7,450	7,520	7,750
NCC (Net Carrying Capacity)	2,310	1,930	1,550	1,720	880
GVWR	10,460	10,460	10,460	10,460	10,460
Interior Height	82"	82"	82"	82"	82"
Exterior Height w/ A/C	11' 4"	11' 4"	11' 4"	11' 4"	11' 4"
Exterior Width	96"	96"	96"	96"	96"
Exterior Length	40' 9"	40' 9"	40' 9"	40' 9"	40' 9"
Refrigerator (cu. feet)	18	18	18	18	18
Water Heater Cap. (gal. G/E w/DSI)	6	6	6	6	6
Fresh Water Cap. (gal.)	38	38	38	38	38
Waste Water Cap. (gal.)	32	32	32	32	32
Gray Water Cap. (gal.)	64	64	64	64	64
LP Gas Cap. (lbs.)	60	60	60	60	60
Furnace BTUs (1,000s)	30	30	30	30	30
Tire Size	15"	15"	15"	15"	15"
Awning	20'	20'	18'	20'	20'

*This weight reflects the rolling average unit weight for each model. Your trailer weight will vary according to optional equipment.

DÉCOR



AMENITIES TO LIVE BY!

With several floorplans to choose from, affordable **SPORTSMEN 5TH WHEELS** allow you to travel in comfortable, worry-free style. Contemporary décor elements, clean white fiberglass exterior and a mid-profile look make the journey just as amazing as the destination. Enjoy all the standard amenities or choose some great upgrades, like a fireplace and theater seating. Some models even offer an outdoor kitchen and double bunks.

303RL : Walnut décor



THEATER SEATING

Standard theater seats with heat, massage and LED accent lights; recline together or individually. (303RL shown)



NICELY EQUIPPED

Large windows for natural light, upgraded seamless countertops, four storage-seat chairs, solid wood table with leaf, and efficient, generous storage. (303RL shown)



WARDROBE SLIDE

No need to travel light, with full-length hanger storage plus ample drawer space. (303RL shown)

251RL : Walnut décor



YOU HAVE OPTIONS

The sofa is standard, or choose optional theater seating – both come with convenient side storage tables.

PRACTICAL LIVING

L-shaped kitchen, entertainment center with standard 39-inch LED TV, multiple media stereo with DVD, Bluetooth and NFC wireless connectivity, and optional 30-inch fireplace. (251RL shown)



BATHROOM LUXURY

Extra-large linen closet and built-in mirrored bathroom vanity. (251RL shown)

REST EASY

Walk-around queen with mirrored his-and-hers full-length side closets, plus overhead storage. (251RL shown)



STANDARDS

- 5/8" Tongue & Groove Plywood Floor
- New Aerodynamic Front Profile
- Enclosed Pin Box
- 3/8" Fully Walk-On Roof Decking
- 1-Piece Seamless Roof
- Awning w/Drip Rail & Spouts
- Tinted Windows
- Super-Sized Panoramic Slideroom Window
- Radius Entry Door
- Smooth Screwless Baggage Doors
- LED Pass-Through Storage Light
- Cable Hookup
- Digital TV Antenna w/Booster
- Self-Adjusting Electric Brakes
- Radial Tires
- Rear Bumper w/Sewer Hose Storage
- Winter Bypass Kit
- (2) or (4) Stabilizer Jacks (model specific)
- Outside Shower
- (2) 30# Gas Bottles w/Bottle Cover
- 30 AMP Service
- 13,500 BTU A/C
- 3-Burner Cooktop
- Range Hood w/12V Light & Exhaust Fan
- Microwave w/Turntable

- Oven
- Acrylic Sink w/High-Rise Faucet
- Roller Ball Bearing Drawer Guides
- Large Overhead Cabinets
- LED Interior Lighting
- Monitor Panel
- Built-In Medicine Cabinet w/Mirror in Bath
- Shower Surround
- Power Vent in Bath
- Skylight over Shower
- Queen Mattress
- Reversible Quilted Comforter
- Main Bedroom Roof Vent
- Aluminum Wheels

OPTIONS

- Polar White Exterior Fiberglass (required)
- 15,000 BTU A/C IPO 13,500 BTU A/C
- 50 AMP Service w/2nd A/C Prep
- 2nd A/C (13,500 BTU)
- 30" Fireplace (N/A 231RK)
- Bedroom LED TV w/Inside/Outside Bracket
- Radiant Technology Package (foil in floor, roof, front, rear)
- F/S Dinette Table & 4 Chairs IPO Dinette

- Tri-Fold HAB Sofa IPO Jackknife
- Theater Seating w/Heat & Massage Features IPO Jackknife (251RL, 262RLK) (required on 303RL, 344BH)
- Electric Rear Stabilizer Jacks
- 10 CU FT 12V Refrigerator IPO 8 CU FT Gas/Electric Refrigerator
- Central Vac System
- MaxxAir Vent Fan LR or Bath (required on 281BHK, 302BHK)
- Trundle Bed IPO Dinette in Bunk Slide (302BHK)
- Wireless Backup Camera System - Observation
- Bumper Mount Grill (N/A 231RK)
- Roof Ladder

KZ ADVANTAGE PACKAGE (MANDATORY OPTION)

EXTERIOR

- Flip-Up Entry Steps
- 5/8" T&G Plywood Floor
- Key-Alike for Baggage & Entry Doors
- Friction Hinge Entry Door
- Large Folding Grab Handle
- Power Front Jack
- Spare Tire
- Equa-Flex® Suspension

- Nitrogen-Filled Tires
- Flip-Down 71" Storage Rack
- Exterior Speakers
- Battery Disconnect Switch
- Black Tank Flush
- Toylok
- Backup Camera Prep
- Solar Prep
- Climate Package (heated, insulated & enclosed underbelly)

INTERIOR

- Seamless Countertops w/Deep Undermount Stainless Steel Kitchen Sink
- Sink Cover
- Drop-In Cooktop w/Glass Cover & Oven
- Kitchen Skylight
- 36" Storage Bins in Booth Dinette
- Bright White LED Light Strip above Main LR Slide Room(s)
- Jackknife w/Middle Console & Bolster Arms
- 2 Motion Sensor Lights
- LED TV
- Multiple Media Stereo w/DVD/Bluetooth/NFC Wireless Connectivity
- (2) 6.5" Interior Speakers
- 12V Dual USB Port
- Pleated Shades

- Foot-Flush Toilet
- Plywood Bed Base
- Upper Bunk Windows (select models)
- Pillowtop Mattress
- Wider Pocket/Passage Interior Doors

KZ CONVENIENCE PACKAGE (MANDATORY OPTION)

EXTERIOR

- Power Awning w/LED Light Strip
- 16" Tires w/Aluminum Wheels (N/A 231RK)
- Magnetic Baggage Door Catches
- Omnidirectional HDTV Antenna
- LED Lights in Exterior Speakers

INTERIOR

- Residential Grade Linoleum
- 8 CU FT Gas/Electric Refrigerator
- Stainless Steel Residential Kitchen Faucet w/Pulldown Sprayer
- Surfex® Wood Step in FW Hallway
- Interior Control Switches on OH End Cabinet
- Dark Accent Trim on Corners/Entry Doors
- Electric Outlet in Bunk Area

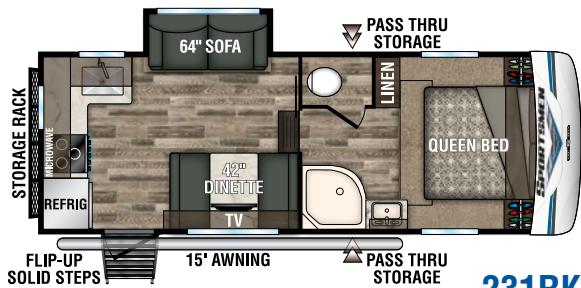
Sportsmen Fifth Wheels	231RK	251RL	262RLK	281BHK	302BHK	303RL	344BH
UVW (Unloaded Vehicle Weight)*	6,100	6,890	8,100	7,730	8,710	8,640	10,150
Dry Hitch Weight*	840	1,190	1,430	1,300	1,210	1,300	1,750
Dry Axle Weight*	5,260	5,700	6,670	6,430	7,500	7,340	8,400
NCC (Net Carrying Capacity)	900	1,610	1,100	1,470	1,290	1,360	1,845
GVWR	7,000	8,500	9,200	9,200	10,000	10,000	11,995
Interior Height	75"	75"	75"	75"	75"	75"	75"
Exterior Height w/ A/C	11' 11"	12'	12' 5"	12' 5"	12' 5"	12' 5"	12' 7"
Exterior Width	96"	96"	96"	96"	96"	96"	96"
Exterior Length**	25' 3"	29' 11"	32' 4"	33' 6"	36' 2"	34' 6"	39' 3"
Refrigerator (cu. feet)	8	8	8	8	8	8	8
Water Heater Cap. (gal. G/E w/DSI)	6	6	6	6	6	6	6
Fresh Water Cap. (gal.) [Including Water Heater Capacity]	38	38	38	38	38	38	38
Waste Water Cap. (gal.)	53	53	53	40	40	53	53
Gray Water Cap. (gal.)	93	53	93	40	40	53	53
1/2 Bath Cap. (gal.)	N/A	N/A	N/A	40	40	N/A	N/A
LP Gas Cap. (lbs.)	60	60	60	60	60	60	60
Furnace BTUs (1,000s)	25	25	30	30	30	30	30
Tire Size	15"	16"	16"	16"	16"	16"	16"
Awning	15'	19'	18'	17'	18'	13'/11' opt.	17'/11' opt.

*This weight reflects the rolling average unit weight for each model. Your trailer weight will vary according to optional equipment.

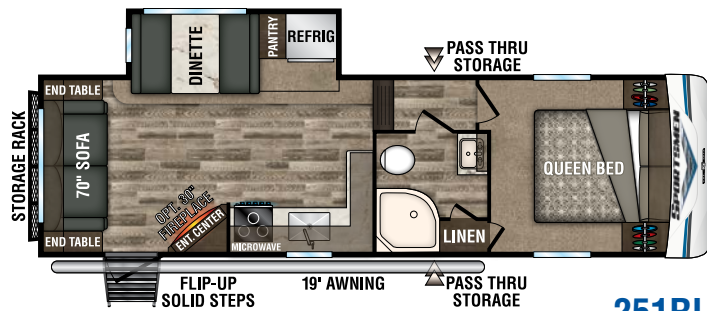
**Exterior length is measured from center of hitch pin to rear bumper.

DÉCOR



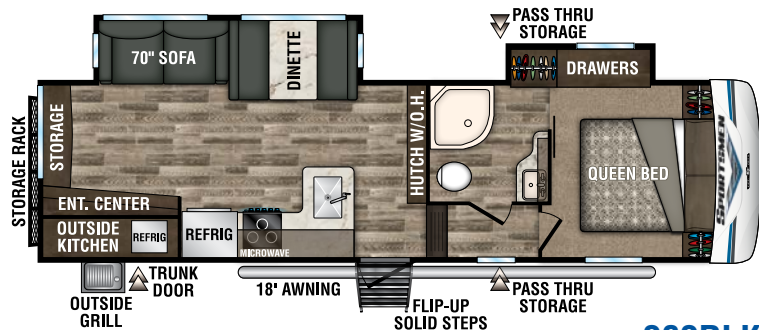


231RK

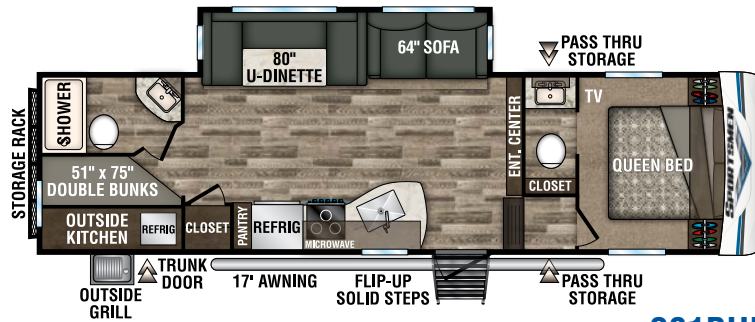


251RL

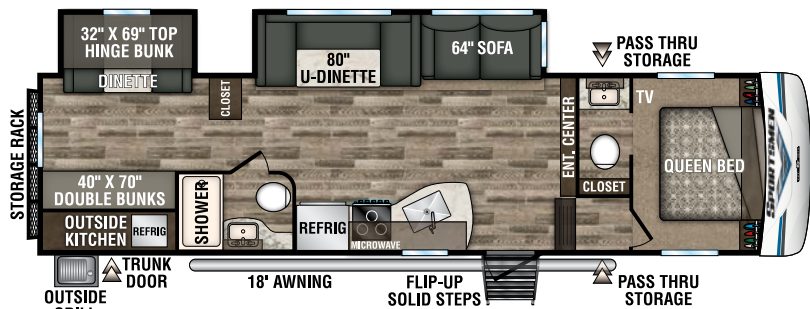
NEW



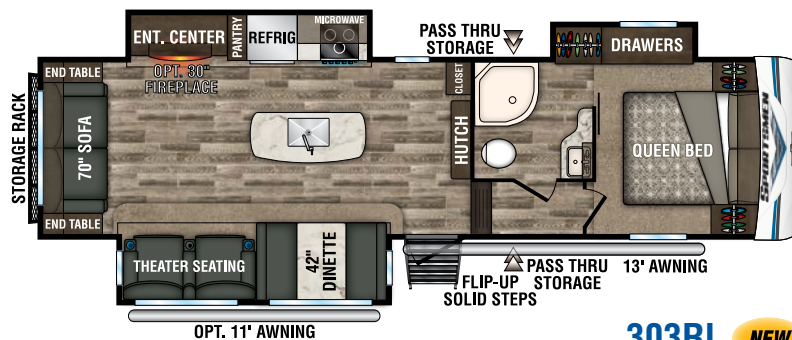
262RLK



281BHK

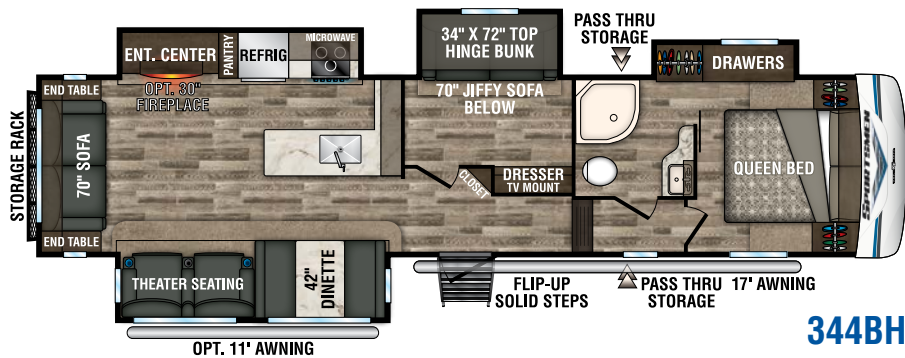


302BHK



303RL

NEW



344BH



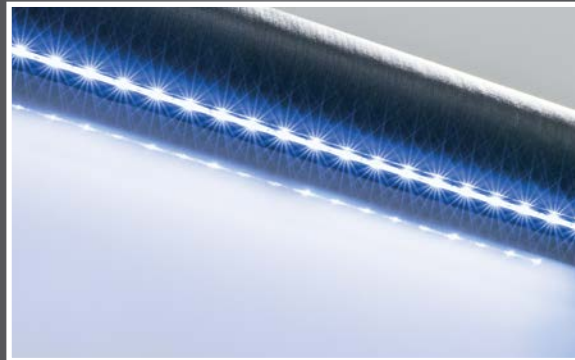
RACK IT
 Flip-down
 70-inch storage
 rack with
 200-pound
 capacity.
 (303RL shown)

SPORTSMEN

EXTERIOR FEATURES



FLIP-UP ENTRY STEP provides solid footing and folds away neatly. The friction-hinged entry door with grab bar and screen-shot feature eliminates slamming, for safe and easy passage.



POWER AWNING W/LED LIGHTS
Built-in light strip offers nighttime ambience.



SECURE STORAGE
Large finished basement pass-through storage with motion light, magnetic catches and slam-latch door.



BATTERY DISCONNECT
Helps conserve battery life.



BACKUP CAMERA PREP
Furion observation camera is an easy add-on, and offers peace of mind.



5/8-INCH TONGUE AND GROOVE PLYWOOD floor decking.



STANDARD ALUMINUM WHEELS
with nitrogen-filled radial tires. (FWs only)



PARTY OUTDOORS
Two exterior speakers with LED accent lighting are standard.



Fully-heated, insulated and enclosed underbelly!

SPORTSMEN'S CLIMATE PACKAGE
means added insulation to extend the camping season.

INTERIOR FEATURES



COOL TREATS

Optional 10 CU FT 12V refrigerator (shown), or choose the standard 8 CU FT gas/electric.



STAINLESS STEEL

under-mount sink and high-rise faucet with pull-down sprayer.



PRO PANTRY

Deep kitchen pantry with tall shelves, and retention lips for secure travel.



EXCEPTIONAL STORAGE

Residential ball-bearing drawer glides with 75-pound capacity.



COOKTOP

offers recessed, three-burner work area with a glass cover, and LED accented oven knobs.

DOWNLOAD YOUR FREE

KZ RV APP TODAY!

Owning and operating an RV has never been easier. Everything you need is now in the palm of your hand.



Track RV Maintenance



Keep RV Service Close



Set Custom Notifications



Reference Checklists for RV Trips



DOWNLOAD NOW!



VISIT KZ-APP.COM TO LEARN MORE.



True 2-Year Limited Warranty!

KZ's 24-month hitch-to-bumper limited warranty umbrella is the best two-year warranty in the business, covering more than 1,500 operation codes for a full two years and approved for full-time living, thus protecting your investment while you enjoy your RV.

You've found the RV that fits your needs... now you want total confidence in your selection. Because KZ has total confidence in the products we build, we can pass that along to the original purchaser, starting from the date of delivery. Rest easy... you've partnered with the right manufacturer!

KZ Recreational Vehicles... *A History in Progress*

Sam King and Daryl Zook built a truck camper in 1972, with founding principles of quality, fairness, courtesy and integrity. Nearly 50 years later, our 625 employees build your recreational vehicles, on our 100+ acre campus in Shipshewana, IN.

When you communicate with KZ, you'll always be speaking with someone who takes you seriously and treats you with respect. Thank you for considering KZ, and welcome to our world-wide family of satisfied customers!



Dealer:



985 N 900 W • Shipshewana, IN 46565
E-mail kz@kz-rv.com • www.kz-rv.com



Due to continual research and advances, manufacturer reserves the right to change specifications, design, price and equipment without notice, and assumes no responsibility for any error in this literature. Some items shown are not included as standard or optional equipment. ©2019KZ | 03/01/19 | 60M