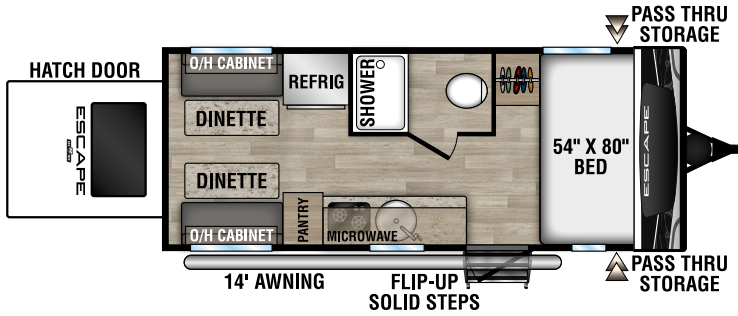




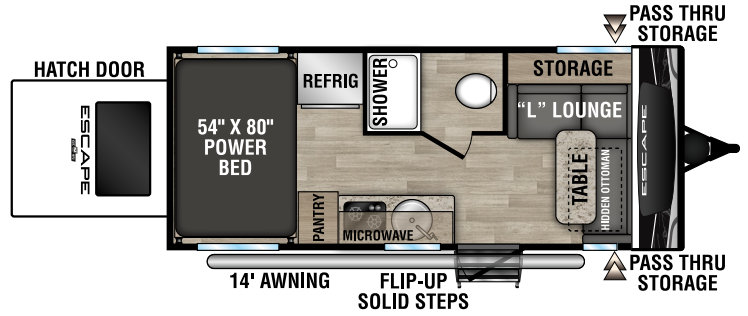
RECREATIONAL
VEHICLES

ESCAPE

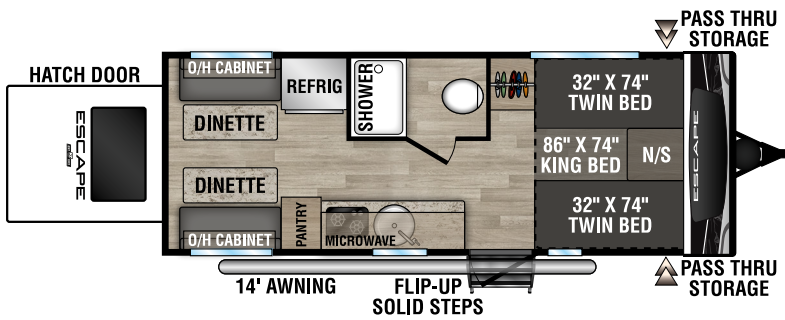
ULTRA LIGHTWEIGHT TRAVEL TRAILERS



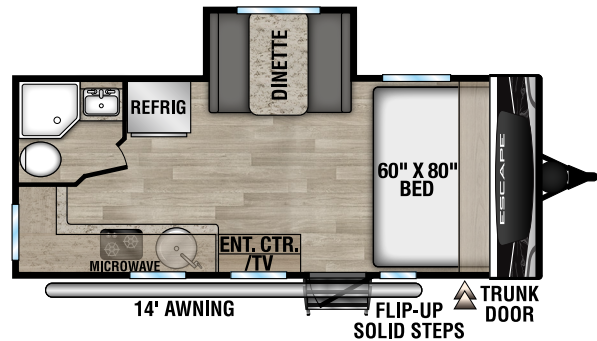
E17 HATCH UUV - 3,320 | Exterior Length - 22' | Sleeps - 4



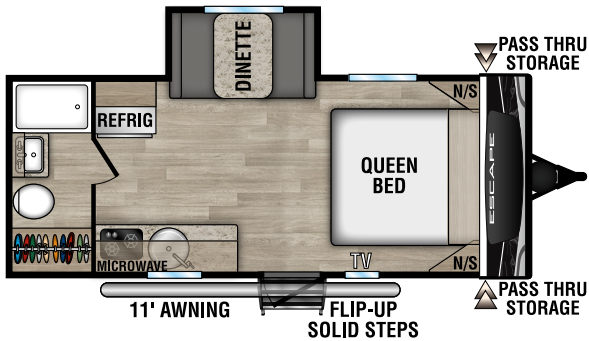
E18 HATCH UUV - 3,490 | Exterior Length - 22' | Sleeps - 4



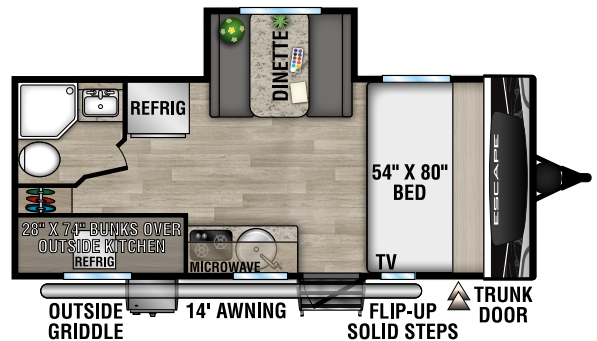
E20 HATCH UUV - 3,560 | Exterior Length - 23' 10" | Sleeps - 4



NEW
E181MK UUV - 3,590 | Exterior Length - 22' 1" | Sleeps - 4

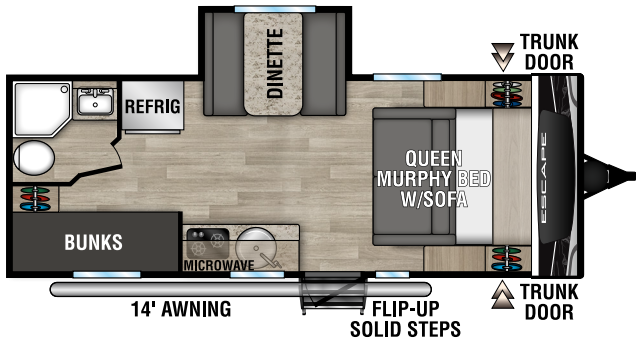


E181RB UUV - 3,500 | Exterior Length - 22' 1" | Sleeps - 3

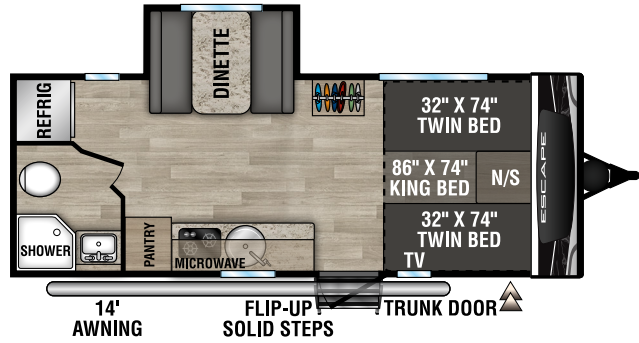


E191BHK UUV - 3,610 | Exterior Length - 22' 1" | Sleeps - 5

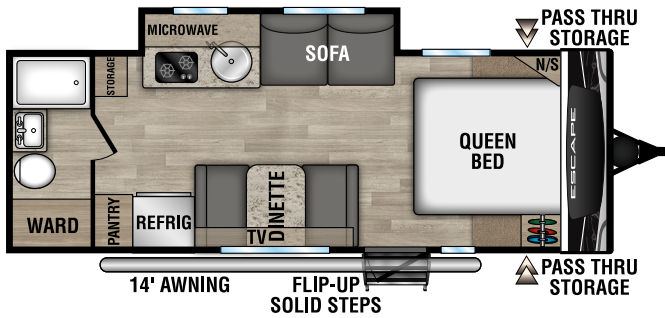
2023 ESCAPE



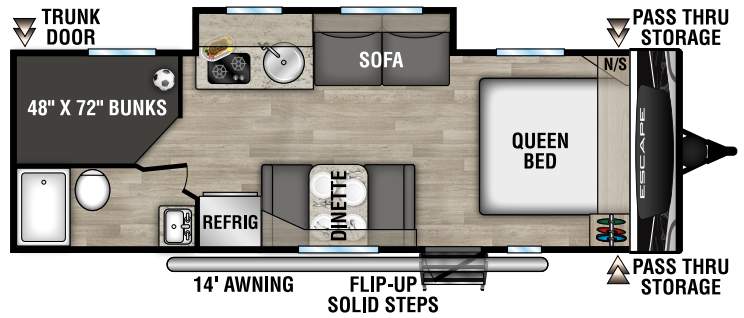
E201BH UVW - 3,780 | Exterior Length - 23' 9" | Sleeps - 5



E201TB UVW - 3,700 | Exterior Length - 23' 9" | Sleeps - 3



E211RB UVW - 4,000 | Exterior Length - 25' 2" | Sleeps - 4



E231BH UVW - 4,170 | Exterior Length - 27' 3" | Sleeps - 8

OFF-GRID/OFF-ROAD PACKAGE

Our new Off-Grid/Off-Road Package allows complete boondocking capabilities, and includes a 100W roof-mounted solar panel, 1,000W inverter with dedicated 110V outlets, solar controller, tongue-mounted bike rack, griddle, aluminum wheels with mud tires, extra ground clearance, electronically-controlled heated holding tanks, double entry step and solar controller.



Escape



985 N 900 W SHIPSEWANA, IN 46565

E: KZ@KZ-RV.COM

WWW.KZ-RV.COM

Due to continual research and advances, manufacturer reserves the right to change specifications, design, price and equipment without notice, and assumes no responsibility for any error in this literature. Some items shown are not included as standard or optional equipment. ©2022KZ | 8/29/22 | 5M

Dealer: