



# DURANGO HALF-TON

LIGHTWEIGHT LUXURY FIFTH WHEELS



D283RLT | Birch décor

## KEY FEATURES:

- All floorplans under 12,000 pounds
- Washer/dryer prep in bedroom, an industry-first at a half-ton price point
- Lithium battery ready
- Drop frame chassis w/35% more exterior storage



The KZ **TRUE 2 WARRANTY** is a 2-year hitch-to-bumper limited warranty that's true to its name. The gold standard in RV protection, True 2 provides double the coverage of the industry norm. Plus, our warranty is backed by the craftsmanship and quality we're known for, so you can Go. Camp. Live. Wherever your adventure takes you, know that you're covered in your KZ.



# 2024 DURANGO HALF-TON FIFTH WHEELS

D240RKD | Mink décor



2024  
DÉCOR

BIRCH



MINK



Fifth Wheels	D240RKD	D250RED	D256RKT	D274BHD	D283RLT	D286BHD	D290RLT	D291BHT
UVW (Unloaded Vehicle Weight)*	8,900	8,210	9,650	9,150	9,380	9,250	9,620	10,470
Dry Hitch Weight*	1,380	1,470	1,580	1,650	1,520	1,580	1,590	1,520
Dry Axle Weight*	7,520	6,740	8,070	7,500	7,860	7,670	8,030	8,950
CCC (Cargo Carrying Capacity)	1,600	1,790	1,850	1,350	1,620	1,750	1,880	1,280
GVWR	10,500	10,000	11,500	10,500	11,000	11,000	11,500	11,750
Exterior Height w/ A/C	12' 5"	12' 5"	12' 4"	12' 5"	12' 4"	12' 5"	12' 3"	12' 6"
Exterior Width	96"	96"	96"	96"	96"	96"	96"	96"
Exterior Length**	31' 8"	29' 1"	33' 3"	36'	32' 11"	33' 7"	34' 5"	37' 5"
Refrigerator (cu. feet)	18	18	18	18	18	18	18	18
Water Heater Cap. (on-demand tankless)	***	***	***	***	***	***	***	***
Fresh Water Cap. (gal.)	55	55	55	55	55	55	55	55
Waste Water Cap. (gal.)	50	50	50	50	50	50	50	50
Gray Water Cap. (gal.)	90	90	90	90	50	90	50	100
1/2 Bath Cap. (gal.)	N/A	N/A	N/A	40	N/A	N/A	N/A	50
LP Gas Cap. (lbs.)	60	60	60	60	60	60	60	60
Furnace BTUs (1,000s)	35	35	35	35	35	35	35	35
Tire Size	16"	16"	16"	16"	16"	16"	16"	16"
Awning	19'	20'	14'	15'/16'	13'/10' 6" opt.	(2) 14'	19'	13'/11' opt.

\*This weight reflects the rolling average unit weight for each model. Your trailer weight will vary according to optional equipment.

\*\*Exterior length is measured from rear of bumper to center of coupler.

\*\*\*Infinite supply.

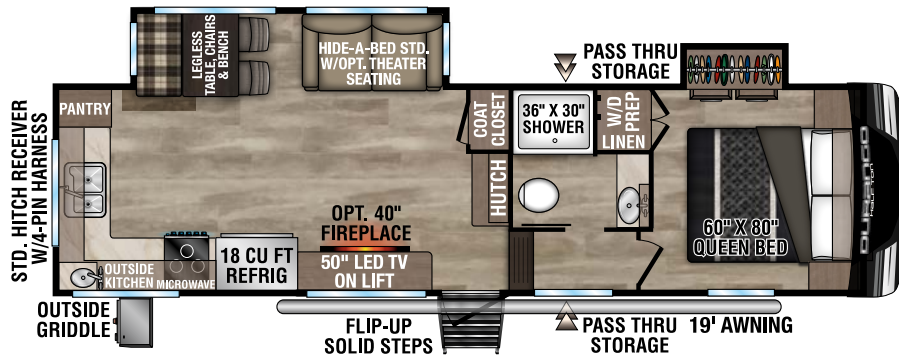


# 2024 DURANGO HALF-TON FIFTH WHEELS

**NEW**

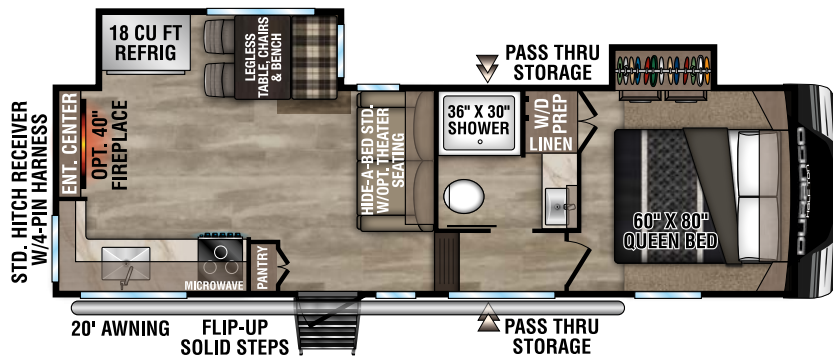
## D240RKD

UVW - 8,900  
Exterior Length - 31' 8"  
Sleeps - 4



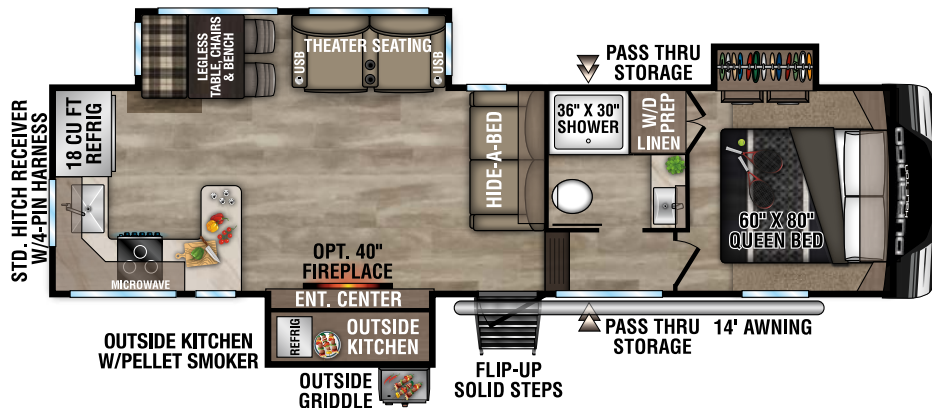
## D250RED

UVW - 8,210  
Exterior Length - 29' 1"  
Sleeps - 4



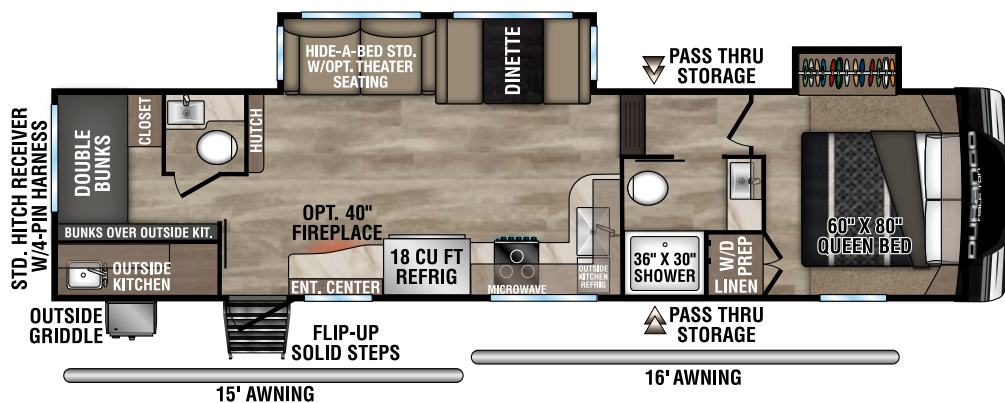
## D256RKT

UVW - 9,650  
Exterior Length - 33' 3"  
Sleeps - 4



## D274BHD

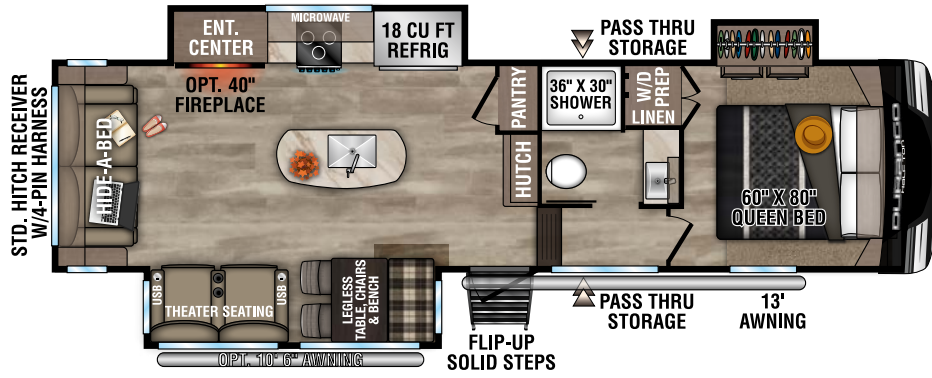
UVW - 9,150  
Exterior Length - 36'  
Sleeps - 9



# 2024 DURANGO HALF-TON FIFTH WHEELS

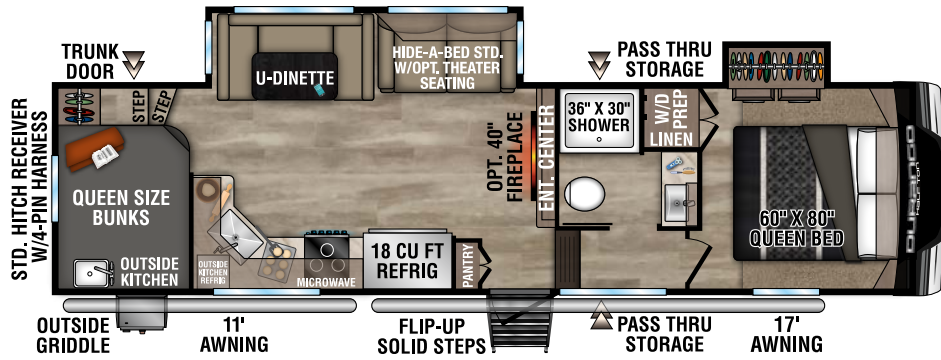
## D283RLT

UVW - 9,380  
Exterior Length - 32' 11"  
Sleeps - 4



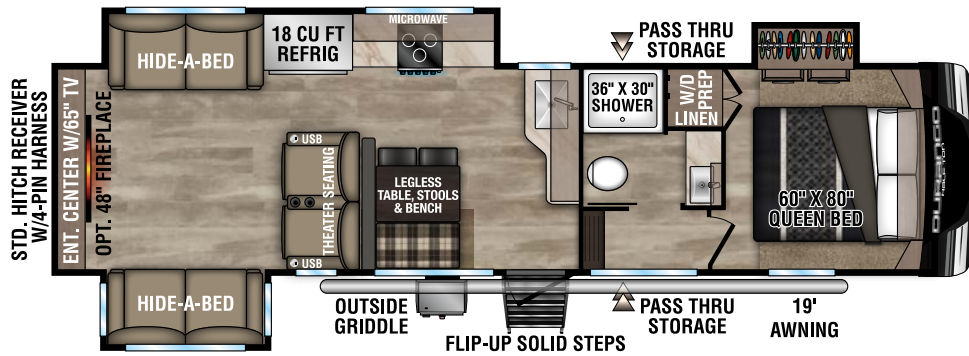
## D286BHD

UVW - 9,250  
Exterior Length - 33' 7"  
Sleeps - 10



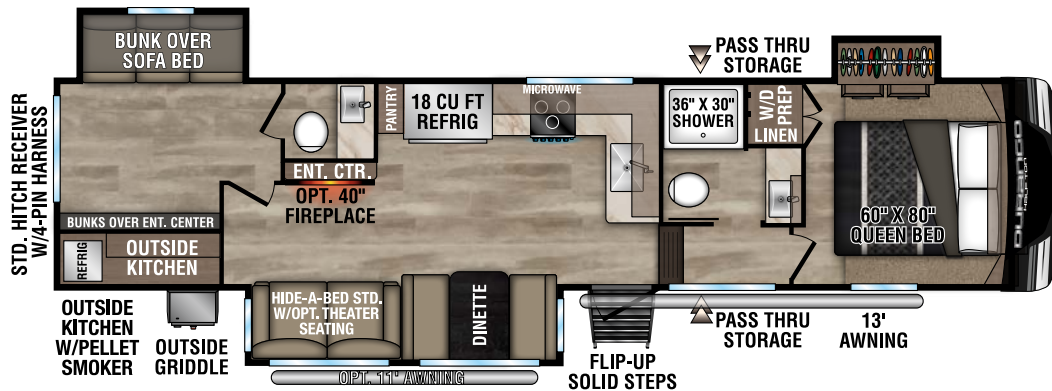
## D290RLT

UVW - 9,620  
Exterior Length - 34' 5"  
Sleeps - 6



## D291BHT

UVW - 10,470  
Exterior Length - 37' 5"  
Sleeps - 9





# 2024 DURANGO HALF-TON FEATURES



**THEATER SEATING** with cupholders, USB plug, heat, massage and power recline/decline.



**STANDARD 18 CU FT RESIDENTIAL REFRIGERATOR** with temperature controls and easy slide out freezer drawer below.



Drop-in **COOKTOP** with glass cover and **OVEN**.



**REDESIGNED FRONT BEDROOM** with 60 x 80 queen bed.

**SMART LED TV, JBL 2.0 SOUND BAR** with Bluetooth wireless connectivity and **COZY AMBIENCE** from the optional 40-inch wide-view fireplace. (D283RLT shown)



**DEEP UNDERMOUNT STAINLESS SINK** with cover and residential faucet with sprayer.



**35% MORE PASS-THROUGH STORAGE** with our drop frame chassis that features motion-lit technology.



Taking our solar power package to the next level. Roof mounted solar prep standard.

**OPTIONAL "OFF THE GRID" SOLAR PACKAGE** includes (2) 220W solar panels, 30A MPPT solar charge controller w/MPPT remote panel, 2,000W True Sine Wave Inverter w/all outlets "hot".



**DURANGO TOWING PACKAGE** 3,000 LB tow rating, 300 LB hitch rating, 4-pin wire harness connection and 2" towing bar receiver hitch.



**STANDARD FLIP-UP ENTRY STEP** provides solid footing, coming and going. Handy friction hinge and screenshot auto-door-close feature.



# 2024 DURANGO HALF-TON STANDARDS

## CONSTRUCTION FEATURES

- Steel Powder Coated Frame
- R-13\* 2" Block Foam Bonded Sidewalls w/EGS Metal Backing Strips (to support all interior cabinets)
- Lamilux® Gelcoat Fiberglass
- 1-Piece ABS Slideroom Bottoms; Slideroom Floors Insulated
- 1-Piece, Seamless, Walk-on, Tufflex Roofing Material w/Lifetime Warranty
- Pex® In-Floor Heated Waterlines & Kitchen Gray Pipes (all waterlines & drainlines are located above all insulation)
- Reinforced Heavy-Duty Fiberglass Front Cap (w/maximum turning radius on short bed trucks)
- 6' 2" Tall Main Floor Sliderooms
- 5/8" Tongue and Groove, Screwed and Glued Plywood Floor Decking

## EXTERIOR FEATURES

- Dexter® Axles w/Self Adjusting Brakes & Height Adjusting Hangers
- 8-Lug Heavy-Duty Aluminum Rims w/16" Nitro Filled Tires
- 100% Exterior LED Running Lights & Taillights
- LED Front Docking Light & Sewer Hookup Light
- Electric Awning w/LED Lights
- Electric Front Jacks
- 3" x 14" Foam-Core In-Floor Straight-Line Heating System w/35,000 BTU Furnace
- Heated Water Convenience Center (includes black tank flush, power fresh tank water fill, winterizing system, outside shower)
- Heated & Enclosed Dump Valves
- Dual Lock Basement Storage Slam Latches
- Satellite Pre-Wire (roof & ground)
- Pre-Wired for Exterior TV
- Full-Perimeter Rain Gutter System (includes rear & additional gutters over sliderooms)
- LP Quick Connect
- Under Mount Spare Tire
- 30 AMP Electrical Service

## LIVING ROOM/KITCHEN FEATURES

- Pullout Sprayer Faucet
- Storage Shelf under Kitchen Sink
- Heavy-Duty 100 LB Drawer Glides on Every Drawer
- Baltic Birch Drawer Boxes
- Microwave
- Kitchen Window (most models)
- All-Wood Lumber Core Cabinets w/Hardwood Doors
- 5" Black Cabinet Hardware
- XL Toggle Light Switches
- All LED Ceiling & Cabinet Lights w/Multiple On/Off Switches
- All Kitchen OH Cabinets have Shelf & Extra-Tall Slide Lips

## BATHROOM/BEDROOM FEATURES

- Shower Skylight
- Porcelain Foot-Flush Toilet
- All LED Lights in Bed & Bath w/Multiple Large Switches
- 12V Vent Fans in all Baths
- Bathroom Linen Closet (where available)
- Padded Headboard w/Shelf & Power at the Head of all Beds
- XL Under-Bed Storage
- Bedroom TV Pre-Wire

\*Calculated R-Value

NOTE: Options and Packages can be found on the website



**TUFFLEX ROOFING**  
by Dacor Products  
**LIFETIME WARRANTY!**



Two attic vents are in each RV, providing vital escape routes for unwanted moisture that accumulates during use.



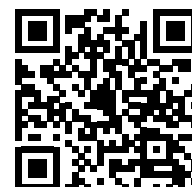
Fully-heated, insulated and enclosed underbelly!  
R-13\*sidewalls, R-24\*  
roof and floor.  
\*Calculated R-Value

Dealer:

**RVIA**



Portions of this brochure were used with the expressed authority of Dexter Axle, but Dexter Axle is not responsible for the accuracy of the information contained herein.



985 N 900 W SHIPSEWANA, IN 46565

E: KZ@KZ-RV.COM

WWW.KZ-RV.COM

Due to continual research and advances, manufacturer reserves the right to change specifications, design, price, and equipment without notice, and assumes no responsibility for any error in this literature. Some items shown are not included as standard or optional equipment.

©2023KZ | 11/06/23 | web