



RECREATIONAL
VEHICLES

SPORTSMEN LE

TRAVEL TRAILERS

STANDARDS

- KZ Exclusive Tough Shield Exterior Metal
- 1-Piece, Seamless, Walk-on, Tufflex Roofing Material w/15-Year Warranty
- 3/8" Fully Walk-On Roof Decking
- Radius Truss Roof Rafters
- Awning w/Drip Rail & Spouts
- R-7 Insulation
- Radius Entry Door
- Extra-Large Radius Baggage Doors
- Tinted Windows
- Diamond Plate Rock Guard
- Rear Bumper w/Sewer Hose Storage
- (2) 20# LP Bottles
- 30 AMP Service
- Cable Hookup
- Digital TV Antenna w/Booster
- 13,500 BTU A/C
- Water Heater Bypass Kit
- 3-Burner Cooktop
- Range Hood w/12V Light & Exhaust Fan
- Microwave w/Turntable
- Large Overhead Cabinets
- Roller Ball Bearing Drawer Guides
- LED Interior Lighting
- Linoleum Throughout
- Mini Blinds
- Monitor Panel
- Power Vent in Bath

- Reversible Quilted Comforter

- Built-In Medicine Cabinet w/Mirror in Bath
- Shower Surround

OPTIONS

- 15,000 BTU A/C IPO 13,500 BTU A/C
- Low Pro 13,500 A/C IPO 13,500 (270TH & smaller)
- Low Pro 15,000 A/C IPO 13,500 (270TH & larger)
- 50 AMP Service w/2nd A/C Prep
- 2nd A/C (13,500 BTU)
- 30" Fireplace (N/A 231BHK, 261BHK, 250TH, 281TH)
- 39" LED TV (N/A 261BHK, 281TH)
- 32" LED TV (261BHK, 281TH)
- 24" LED TV (231BHK)
- Bedroom LED TV w/Inside/Outside Bracket
- F/S Dinette Table & 4 chairs IPO Dinette
- Wireless Backup Camera System - Observation
- Roof Ladder
- Climate Package (heated, insulated & enclosed underbelly)
- Flip Down 71" Storage Rack (N/A on Toy Haulers)
- Murphy Queen Bed w/Sofa (231BHK)
- 10 CU FT Refrigerator 12V IPO 7 CU FT Gas/Electric Refrigerator

- Aluminum Wheels
- Ramp Door Cables – Toy Haulers Only (required)
- Retractable Screen Wall (toy haulers only)
- Party Patio Package (railing) (toy haulers only)
- 11' Power Awning w/LED light strip (303KB, 333KBK, 343BHK)
- Ottoman w/Storage
- Tri-Fold HAB Sofa IPO Jackknife
- Theater Seating w/Heat & Massage IPO Jackknife

KZ ADVANTAGE PACKAGE

(MANDATORY OPTION)
EXTERIOR

- New Aerodynamic Front Profile w/Smooth Metal Front
- Flip-Up Entry Step (main entry)
- Two-Toned Exterior Metal
- Friction-Hinged Entry Door w/Shade Prep
- Key-Alike Program for Entry & Baggage Doors
- Large Folding Grab Handle
- Power Tongue Jack
- Exterior Speakers
- Spare Tire & Carrier
- Nitrogen-Filled Tires
- (4) Stabilizer Jacks
- LP Bottle Cover
- Backup Camera Prep
- Solar Prep

- Outside Shower
- Outside Kitchen (select models)
- Leash Latch w/Bonus Beverage Opener

INTERIOR

- Jackknife Sofa w/Center Console & Bolster Arms
- Drop-In Cooktop w/Glass Cover & Oven
- (2) 12V USB Ports in Bedroom
- Plywood Bed Base
- Upper Bunk Windows (select models)
- Seamless Countertops w/Deep Undermount Stainless Steel Kitchen Sink
- Sink Cover
- Foot-Flush Toilet
- (2) 6.5" Interior Speakers
- Multi-Media Sound Bar Stereo w/ Bluetooth, HDMI and USB Charge
- Shower Skylight
- Bright White LED Light Strip above Slideout Room (main LR only)
- Dinette Doors w/36" Pullout Storage Bins
- Wider Pocket/Passage Interior Doors
- Pleated Shades in Slideout (LR)
- Color Accented Shower Walls
- Bathroom Shelf w/Towel Hooks

- King Bed Mattress

KZ CONVENIENCE PACKAGE

(MANDATORY OPTION)
EXTERIOR

- Power Awning w/LED Light Strip
- Magnetic Catches for Baggage Doors
- LED Light in Storage Area
- Battery Disconnect Switch
- Omnidirectional HDTV Antenna w/Wi-Fi Prep
- Black Tank Flush
- LED Lights in Exterior Speakers

INTERIOR

- Residential Grade Linoleum
- 7 CU FT Gas/Electric Refrigerator w/ Temperature Controls
- Stainless Steel Residential Kitchen Faucet
- Interior Control Switches on Overhead End Cabinet w/Convenience Center for Switches
- Dark Accent Trim on Corners/Entry Doors
- Electric Outlet in Bunk Area
- Stainless Steel Microwave

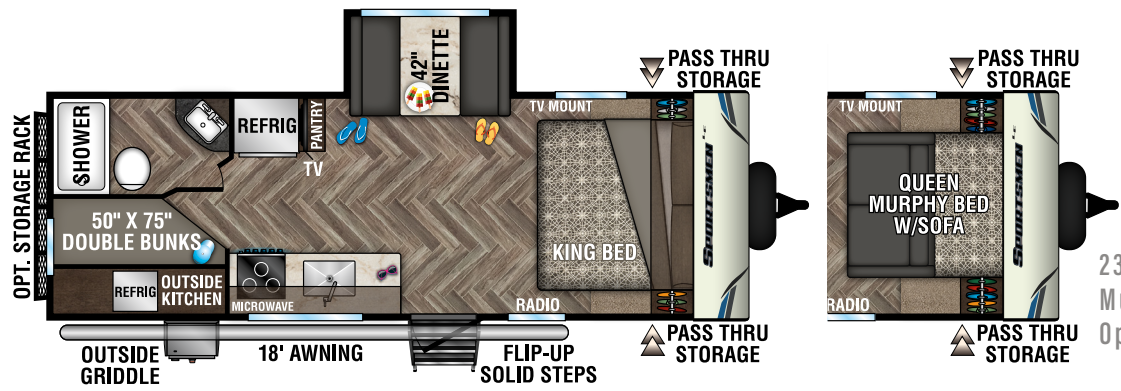
2020 DÉCOR

HAZELNUT

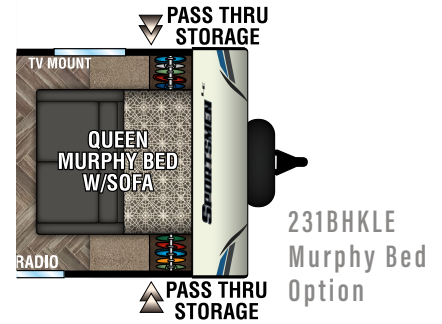
Travel Trailers	231BHKLE	241RKLE	251RLLE	261BHKLE	261RLLE	281BHKLE	291RKLE	301BHKLE	303KBLE	332BHKLE	333KBKLE	343BHKLE
UVW (Unloaded Vehicle Weight)*	5,040	5,420	5,360	5,500	5,880	6,400	6,370	6,460	7,520	7,350	8,090	8,160
Dry Hitch Weight*	700	540	730	670	720	720	700	770	1,180	880	1,310	1,000
Dry Axle Weight*	4,340	4,880	4,630	4,830	5,160	5,680	5,670	5,690	6,340	6,470	6,780	7,160
NCC (Net Carrying Capacity)	960	1,580	1,640	1,500	1,120	1,600	1,630	1,540	1,280	1,450	1,905	1,835
GVWR	6,000	7,000	7,000	7,000	7,000	8,000	8,000	8,000	8,800	8,800	9,995	9,995
Interior Height	78"	78"	78"	78"	78"	78"	78"	78"	78"	78"	78"	78"
Exterior Height w/ A/C	10' 4"	10' 8"	10' 8"	10' 8"	10' 7"	10' 8"	10' 8"	10' 8"	10' 8"	10' 8"	10' 8"	10' 8"
Exterior Width	96"	96"	96"	96"	96"	96"	96"	96"	96"	96"	96"	96"
Exterior Length	27' 5"	28' 6"	28' 11"	29' 10"	30' 6"	32' 5"	33' 3"	33' 11"	34' 11"	37' 7"	38' 4"	37' 10"
Refrigerator (cu. feet)	7	7	7	7	7	7	7	7	7	7	7	7
Water Heater Cap. (gal. G/E w/DSI)	6	6	6	6	6	6	6	6	6	6	6	6
Fresh Water Cap. (gal.)	40	40	40	40	40	40	40	40	40	40	40	40
Waste Water Cap. (gal.)	32	32	32	32	32	32	32	32	32	32	32	32
Gray Water Cap. (gal.)	32	64	32	64	32	64	64	32	32	32	32	32
LP Gas Cap. (lbs.)	40	40	40	40	40	40	40	40	40	40	40	40
Furnace BTUs (1,000s)	20	30	30	30	30	30	30	30	30	30	30	30
Tire Size	14"	14"	14"	14"	14"	15"	15"	15"	15"	15"	15"	15"
Awning	18'	19'	18'	19'	15'	18'	18'	20'	12' w/11' opt.	19'	12' w/11' opt.	10' w/11' opt.

*This weight reflects the rolling average unit weight for each model. Your trailer weight will vary according to optional equipment.

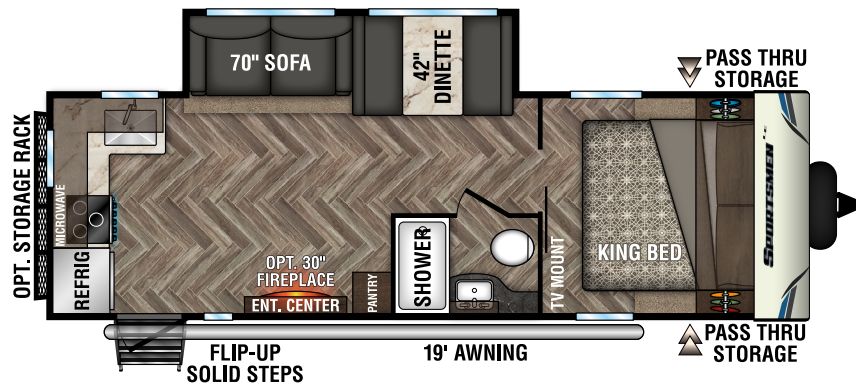
2020 SPORTSMEN LE TRAVEL TRAILERS



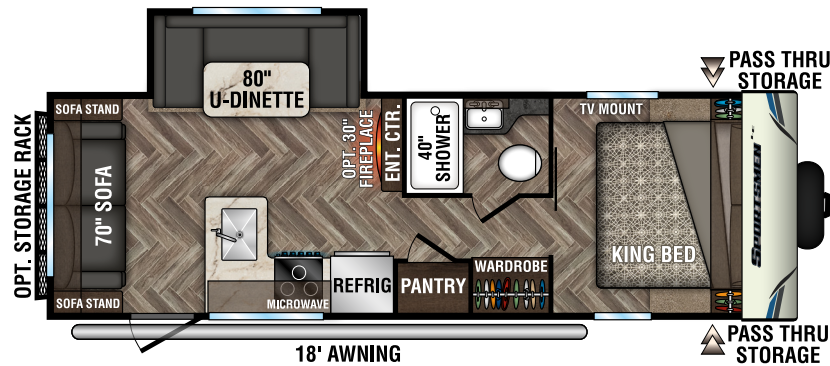
231BHKLE



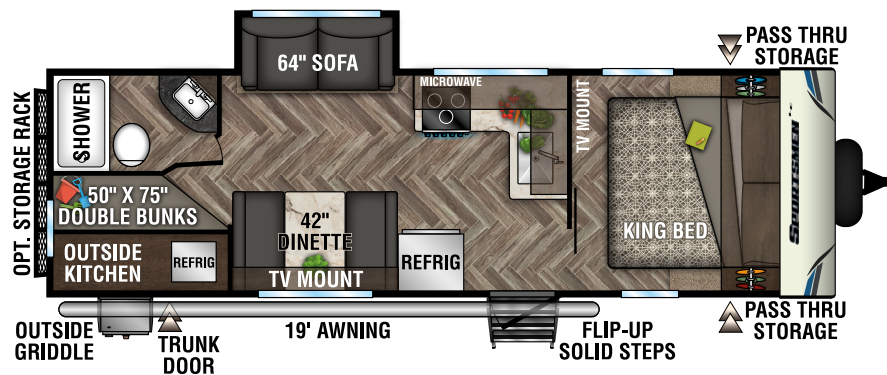
231BHKLE
Murphy Bed
Option



241RKLE

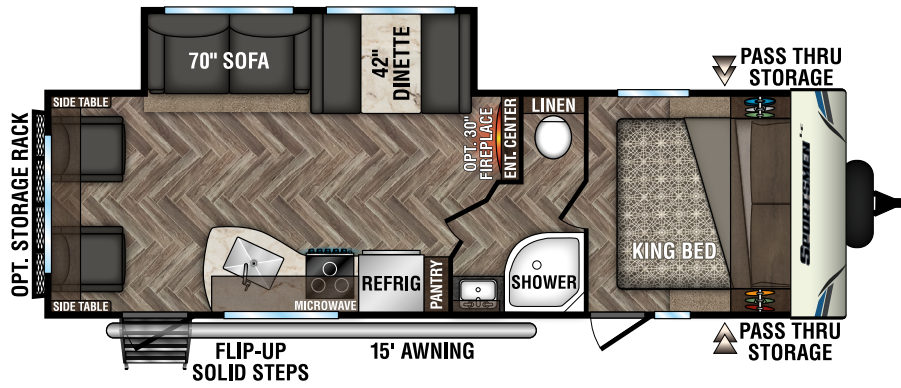


251RLLE **NEW**

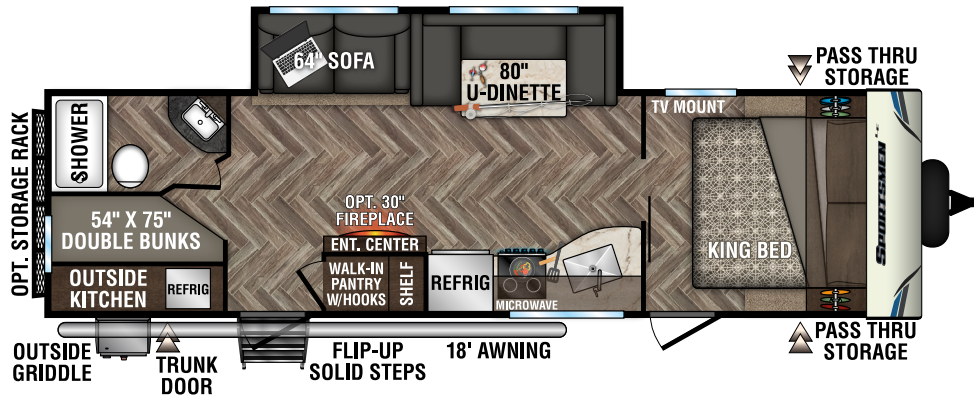


261BHKLE

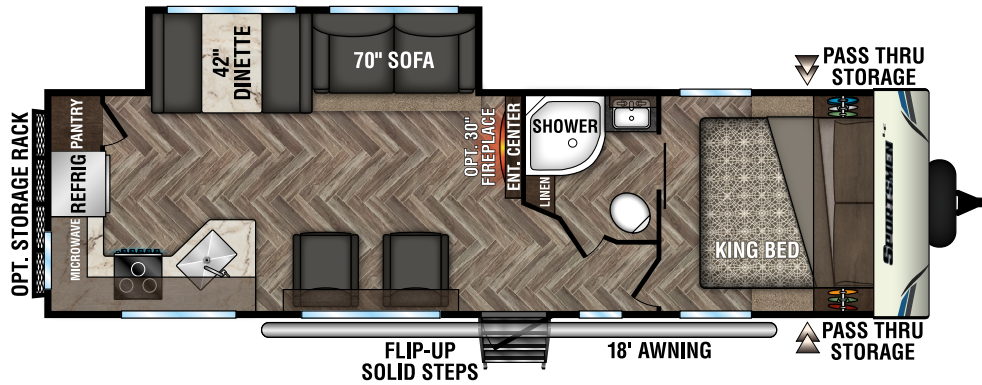
2020 SPORTSMEN LE TRAVEL TRAILERS



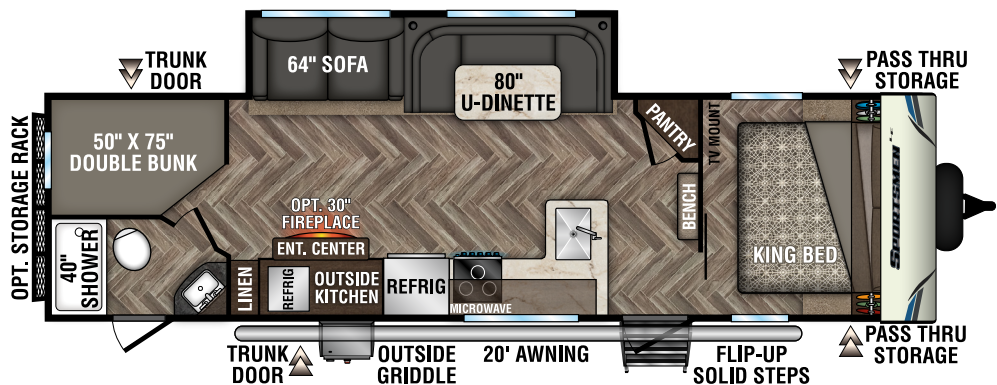
261RLLE



281BHKLE

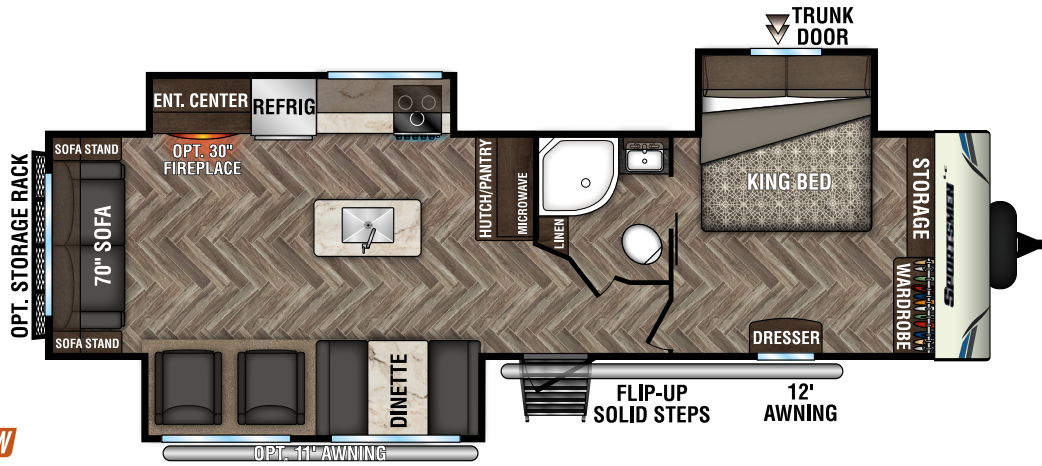


291RKLE

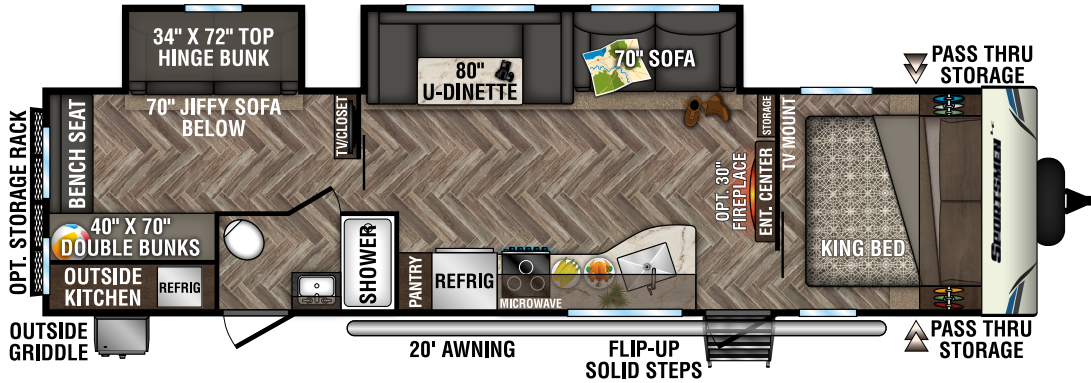


301BHKLE **NEW**

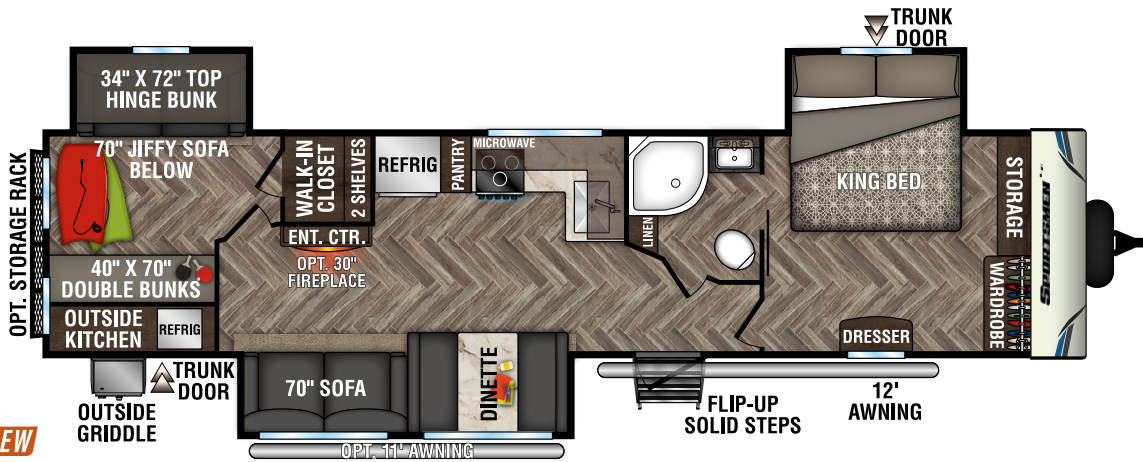
2020 SPORTSMEN LE TRAVEL TRAILERS



303KBL **NEW**



332BHKLE



333KBL **NEW**



343BHKLE



985 N 900 W SHIPSEWANA, IN 46565

E: KZ@KZ-RV.COM

WWW.KZ-RV.COM

Due to continual research and advances, manufacturer reserves the right to change specifications, design, price and equipment without notice, and assumes no responsibility for any error in this literature. Some items shown are not included as standard or optional equipment.

©2019KZ | 2/4/20 | 20M