



RECREATIONAL
VEHICLES

SPORTSMEN

FIFTH WHEELS

STANDARDS

- 5/8" Tongue & Groove Plywood Floor
- New Aerodynamic Front Profile
- Enclosed Pin Box
- 3/8" Fully Walk-On Roof Decking
- 1-Piece, Seamless, Walk-on, Tufflex Roofing Material w/15-Year Warranty
- Awning w/Drip Rail & Spouts
- Tinted Windows
- Super-Sized Panoramic Slideroom Window
- Radius Entry Door
- Smooth Screwless Baggage Doors
- LED Pass-Through Storage Light
- Cable Hookup
- Digital TV Antenna w/Booster
- Self-Adjusting Electric Brakes
- Radial Tires
- Rear Bumper w/Sewer Hose Storage
- Winter Bypass Kit
- (2) or (4) Stabilizer Jacks (model specific)
- Outside Shower
- (2) 30# Gas Bottles w/Bottle Cover
- 30 AMP Service
- 13,500 BTU A/C
- 3-Burner Cooktop
- Range Hood w/12V Light & Exhaust Fan
- Microwave w/Turntable
- Oven
- Stainless Steel Sink w/High-Rise Faucet
- Roller Ball Bearing Drawer Guides
- Large Overhead Cabinets
- LED Interior Lighting
- Monitor Panel
- Built-In Medicine Cabinet w/Mirror in Bath
- Shower Surround
- Power Vent in Bath
- Skylight over Shower
- Queen Mattress
- Reversible Quilted Comforter
- Main Bedroom Roof Vent
- Aluminum Wheels

OPTIONS

- Polar White Exterior Fiberglass (required)

- 15,000 BTU A/C IPO 13,500 BTU A/C (required)
- 50 AMP Service w/2nd A/C Prep (required on 303RL, 344BH)
- 2nd A/C (15,000 BTU)
- 2nd A/C ducted (15,000 BTU) - Mach 10 Low Pro
- 30" Fireplace (N/A 231RK)
- Bedroom LED TV w/Inside/Outside Bracket
- Radiant Technology Package (foil in floor, roof, front, rear)
- F/S Dinette Table & 4 Chairs IPO Dinette
- Tri-Fold HAB Sofa IPO Jackknife
- Plumb for Washer/Dryer w/50 AMP & 2nd A/C prep
- Theater Seating w/Heat & Massage Features IPO Jackknife (231RK, 251RL) (required on 303RL, 344BH)
- Electric Rear Stabilizer Jacks
- 10 CU FT 12V Refrigerator IPO 8 CU FT Gas/Electric Refrigerator
- Central Vac System
- Power Vent Fan LR or Bath (required on 302BHK)
- Trundle Bed IPO Dinette in Bunk Slide (302BHK)
- Wireless Backup Camera - Observation & Vision S
- Bumper Mount Grill (231RK, 251RL, 303RL, 344BH)
- Roof Ladder
- 2nd LED Lighted Power Awning (303RL, 344BH)
- Ottoman w/Storage
- Power Front Jack
- Spare Tire
- Equa-Flex® Suspension
- Nitrogen-Filled Tires
- Flip-Down 71" Storage Rack
- Exterior Speakers
- Battery Disconnect
- Black Tank Flush
- Backup Camera Prep
- Solar Prep
- Climate Package (heated, insulated & enclosed underbelly)
- Leash Latch w/Bonus Beverage Opener

INTERIOR

- Seamless Countertops w/Deep Undermount Stainless Steel Kitchen Sink
- Sink Cover
- Drop-In Cooktop w/Glass Cover & Oven
- Kitchen Skylight
- 36" Storage Bins in Booth Dinette
- Bright White LED Light Strip above Main LR Slide Room(s)
- Jackknife w/Middle Console & Bolster Arms
- 2 Motion Sensor Lights
- LED TV
- Multiple Media Stereo w/DVD/Bluetooth/HDMI/USB Charge
- (2) 6.5" Interior Speakers
- Pleated Shades
- Foot-Flush Toilet
- Plywood Bed Base
- Upper Bunk Windows (select models)
- Pillowtop Mattress
- Push-Back Recliners (select models)
- Wider Pocket/Passage Interior Doors
- Color Accented Shower Walls

tank levels & battery levels, controls sliderooms, awnings, inside/outside lighting)

- Power Awning w/LED Light Strip
- 16" Tires w/Aluminum Wheels (N/A 231RK)
- Magnetic Baggage Door Catches
- LED light in Storage Area
- Battery Disconnect Switch
- Omnidirectional HDTV Antenna w/Wi-Fi Prep
- LED Lights in Exterior Speakers

INTERIOR

- Residential Grade Linoleum
- 8 CU FT Gas/Electric Refrigerator w/ Temperature Controls
- Stainless Steel Residential Kitchen Faucet w/Spring Sprayer
- Surfex® Wood Step in FW Hallway
- Interior Control Switches on OH End Cabinet w/Convenience Center for Switches
- Dark Accent Trim on Corners/Entry Doors
- Electric Outlet in Bunk Area
- Stainless Steel Microwave

2020 DÉCOR

ALMOND

WALNUT

KZ ADVANTAGE PACKAGE (MANDATORY OPTION)

EXTERIOR

- Flip-Up Entry Steps
- 5/8" Tongue & Groove Plywood Floor
- Key-Alike for Baggage & Entry Doors
- Friction Hinge Entry Door w/ Shade Prep
- Large Folding Grab Handle
- Amber Step Light

KZ CONVENIENCE PACKAGE

(MANDATORY OPTION)

EXTERIOR

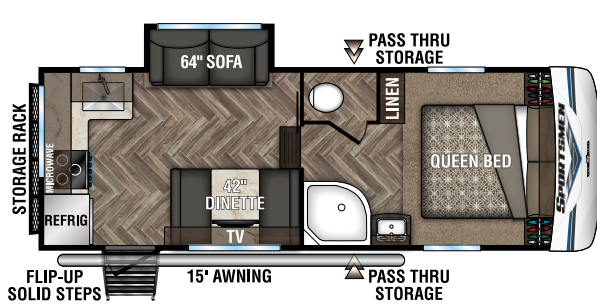
- KZ Engage powered by OneControl w/5" screen - FWs (control system monitors)

Fifth Wheels	231RK	251RL	292BHK	302BHK	303RL	344BH
UVW (Unloaded Vehicle Weight)*	6,170	7,030	8,290	8,810	8,700	10,200
Dry Hitch Weight*	840	1,280	1,530	1,250	1,470	1,850
Dry Axle Weight*	5,330	5,750	6,760	7,560	7,230	8,350
NCC (Net Carrying Capacity)	830	1,470	1,710	1,190	1,300	1,795
GVWR	7,500	8,500	10,000	10,000	10,000	11,995
Interior Height	75"	75"	75"	75"	75"	75"
Exterior Height w/ A/C	11' 11"	12'	12' 5"	12' 5"	12' 5"	12' 7"
Exterior Width	96"	96"	96"	96"	96"	96"
Exterior Length**	25' 3"	29' 3"	35' 3"	36' 2"	34' 6"	39' 3"
Refrigerator (cu. feet)	8	8	8	8	8	8
Water Heater Cap. (gal. G/E w/DSI)	6	6	6	6	6	6
Fresh Water Cap. (gal.) [Including Water Heater Capacity]	40	40	40	40	40	40
Waste Water Cap. (gal.)	53	53	53	64	53	53
Gray Water Cap. (gal.)	85	53	53	32	53	53
1/2 Bath Cap. (gal.)	N/A	N/A	N/A	40	N/A	N/A
LP Gas Cap. (lbs.)	60	60	60	60	60	60
Furnace BTUs (1,000s)	30	30	30	30	30	30
Tire Size	15"	16"	16"	16"	16"	16"
Awning	15'	19'	17'	18'	13'/11' opt.	17'/11' opt.

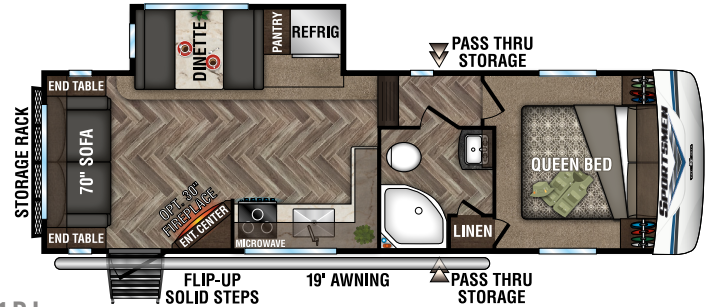
*This weight reflects the rolling average unit weight for each model. Your trailer weight will vary according to optional equipment.

**Exterior length is measured from center of hitch pin to rear bumper.

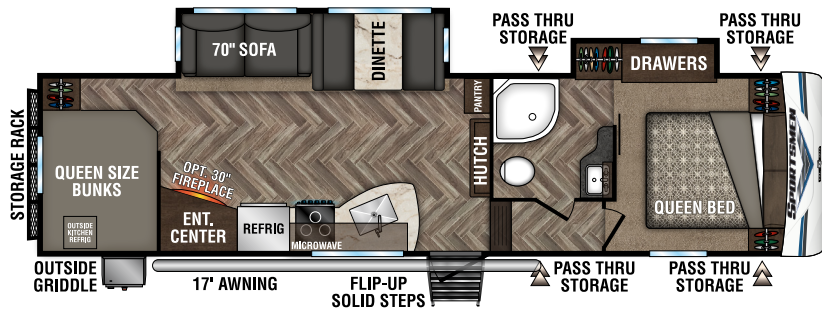
2020 SPORTSMEN FIFTH WHEELS



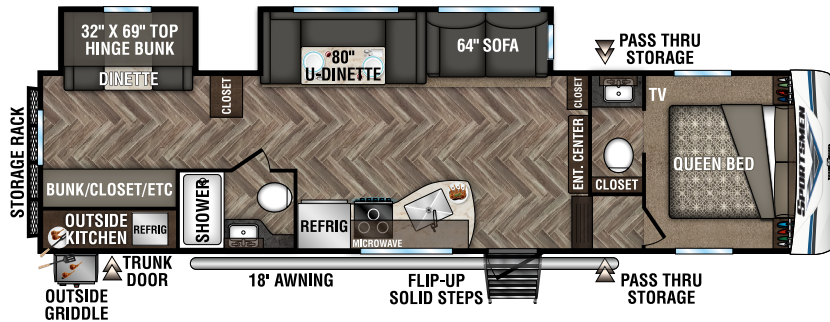
231RK



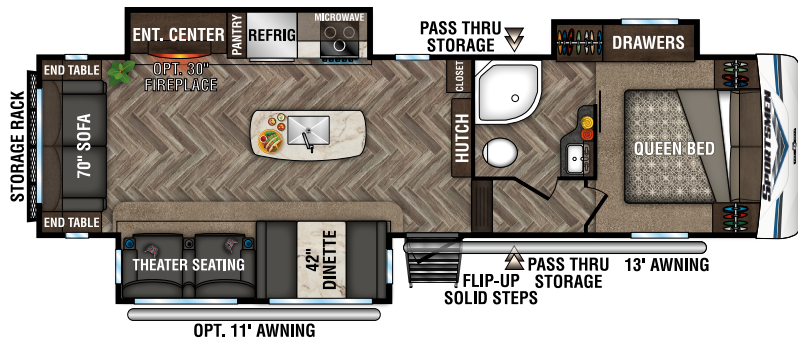
251RL



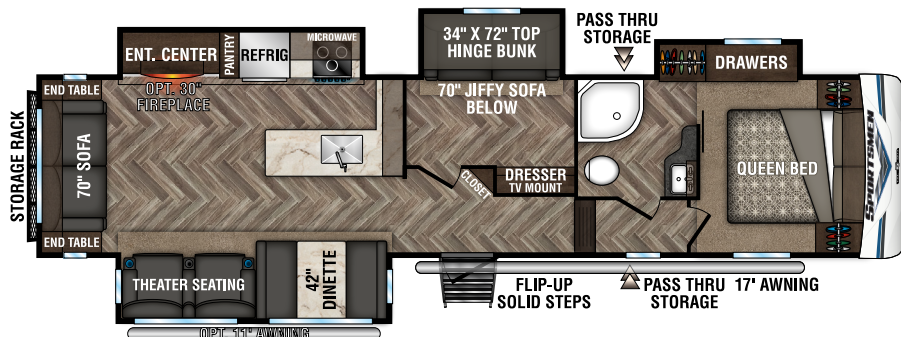
292BHK **NEW**



302BHK



303RL



344BH



985 N 900 W SHIPSEWANA, IN 46565

E: KZ@KZ-RV.COM

WWW.KZ-RV.COM

Due to continual research and advances, manufacturer reserves the right to change specifications, design, price and equipment without notice, and assumes no responsibility for any error in this literature. Some items shown are not included as standard or optional equipment.

©2019KZ | 1/10/20 | 20M