



**RECREATIONAL  
VEHICLES**

# SPORTSMEN

## DESTINATION TRAILERS

### STANDARDS

- KZ Exclusive Tough Shield Exterior Metal
- 5/8" Tongue & Groove Plywood Floor
- New Aerodynamic Front Profile
- Diamond Plate Rock Guard on Front of Travel Trailers
- 3/8" Fully Walk-On Roof Decking
- 1-Piece, Seamless, Walk-on, Tufflex Roofing Material w/15-Year Warranty
- Awning w/Drip Rail & Spouts
- Tinted Windows
- Super-Sized Panoramic Slideout Window
- Radius Entry Door
- Smooth Screwless Baggage Doors
- LED Pass-Through Storage Light
- Cable Hookup
- Digital TV Antenna w/Booster
- Self-Adjusting Electric Brakes
- Radial Tires
- Rear Bumper w/Sewer Hose Storage
- Winter Bypass Kit
- 2 or 4 Stabilizer Jacks (model specific)
- Outside Shower
- (2) 30# Gas Bottles w/Bottle Cover
- 30 AMP Service
- 13,500 BTU A/C
- 3-Burner Cooktop
- Range Hood w/12V Light & Exhaust Fan
- Microwave w/Turntable
- Oven
- Acrylic Sink w/High-Rise Faucet
- Roller Ball Bearing Drawer Guides
- Large Overhead Cabinets
- LED Interior Lighting
- Monitor Panel
- Built-In Medicine Cabinet w/Mirror in Bath
- Shower Surround
- Power Vent in Bath

- Skylight over Shower
- Reversible Quilted Comforter
- Main Bedroom Roof Vent

### OPTIONS

- Color-Infused Ivory Exterior Fiberglass
- 15,000 BTU A/C IPO 13,500 BTU A/C
- 2nd A/C (13,500 BTU)
- 30" Fireplace (Std.)
- Bedroom LED TV w/Inside/Outside Bracket
- Radiant Technology Package (foil in floor, roof, front, rear)
- Freestanding Dinette Table & 4 Chairs IPO Dinette (required on 363FL, 363RL, 364BH)
- Tri-Fold HAB Sofa IPO Jackknife (required on 363FL, 363RL, 364BH)
- Plumb for Washer/Dryer w/50 AMP & 2nd A/C prep (Std.) (only 50 AMP standard on 364BH)
- Theater Seating w/Heat & Massage Features IPO Jackknife (required on 363RL)
- Front & Rear Electric Stabilizer Jacks
- Aluminum Wheels
- Power Vent Fan LR or Bath
- Wireless Backup Camera System - Observation
- Roof Ladder
- DT Package - Add Spare Tire & Alumitread Entry Steps
- Ottoman w/Storage

### KZ ADVANTAGE PACKAGE (MANDATORY OPTION)

#### EXTERIOR

- New Aerodynamic Front Profile w/ Smooth Metal Front
- 5/8" Tongue & Groove Plywood Floor

- Key-Alike for Baggage & Entry Doors
- Friction Hinge Entry Door w/Shade Prep
- Large Folding Grab Handle
- Amber Step Light
- Power Front Jack
- Nitrogen-Filled Tires
- Exterior Speakers
- Battery Disconnect Switch
- Black Tank Flush
- Backup Camera Prep
- Solar Prep
- Climate Package (heated, insulated & enclosed underbelly)
- Leash Latch w/Bonus Beverage Opener

#### INTERIOR

- Seamless Countertops w/Deep Undermount Stainless Steel Kitchen Sink
- Sink Cover
- Drop-In Cooktop w/Glass Cover & Oven
- Kitchen Skylight
- 36" Storage Bins in Booth Dinette
- Bright White LED Light Strip above Main LR Slide Room(s)
- Jackknife w/Middle Console & Bolster Arms
- (2) Motion Sensor Lights
- 30" Fireplace
- LED TV
- Multiple Media Sound Bar Stereo w/ Bluetooth, HDMI and USB Charge
- (2) 6.5" Interior Speakers
- Pleated Shades
- Foot-Flush Toilet
- Plywood Bed Base
- Upper Bunk Windows (select models)
- Pillowtop Mattress
- Push Back Recliners (select models)

- Wider Pocket/Passage Interior Doors
- Color Accented Shower Walls
- Bathroom Shelf w/Towel Hooks

### KZ CONVENIENCE PACKAGE

#### (MANDATORY OPTION)

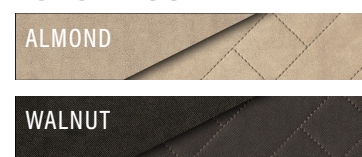
#### EXTERIOR

- Power Awning w/LED Light Strip
- Magnetic Baggage Door Catches
- LED Lights in Storage Area
- Battery Disconnect Switch
- Omnidirectional HDTV Antenna w/ Wi-Fi Prep
- LED Lights in Exterior Speakers

#### INTERIOR

- Residential Grade Linoleum
- 8 CU FT Gas/Electric Refrigerator (110V in DTs)
- Stainless Steel Residential Kitchen Faucet w/Spring Sprayer
- Interior Control Switches on OH End Cabinet w/Convenience Center for Switches
- Dark Accent Trim on Corners/Entry Doors
- Electric Outlet in Bunk Area
- Stainless Steel Microwave

### 2020 DÉCOR



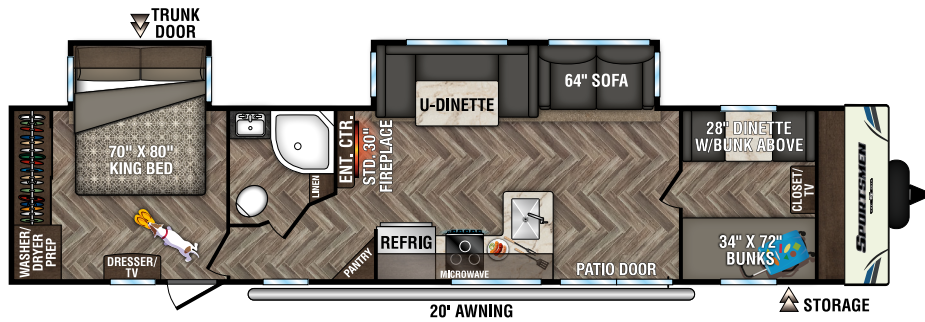
#### Sportsmen Destination Trailers

	362BH	362DB	363FL	363RL	364BH
UVW (Unloaded Vehicle Weight)*	8,390	8,240	8,970	8,740	9,340
Dry Hitch Weight*	1,260	1,230	1,570	1,210	1,830
Dry Axle Weight*	7,130	7,010	7,400	7,530	7,510
NCC (Net Carrying Capacity)	2,070	2,220	1,490	1,720	1,120
GVWR	10,460	10,460	10,460	10,460	10,460
Interior Height	82"	82"	82"	82"	82"
Exterior Height w/ A/C	11' 4"	11' 4"	11' 4"	11' 4"	11' 4"
Exterior Width	96"	96"	96"	96"	96"
Exterior Length	40' 7"	40' 7"	40' 7"	40' 7"	41' 0"
Refrigerator (cu. feet)	18	18	18	18	18
Water Heater Cap. (gal. G/E w/DSI)	6	6	6	6	6
Fresh Water Cap. (gal.)	40	40	40	40	40
Waste Water Cap. (gal.)	32	32	32	32	32
Gray Water Cap. (gal.)	64	64	64	32	64
LP Gas Cap. (lbs.)	60	60	60	60	60
Furnace BTUs (1,000s)	30	30	30	30	30
Tire Size	15"	15"	15"	15"	15"
Awning	20'	20'	18'	20'	20'

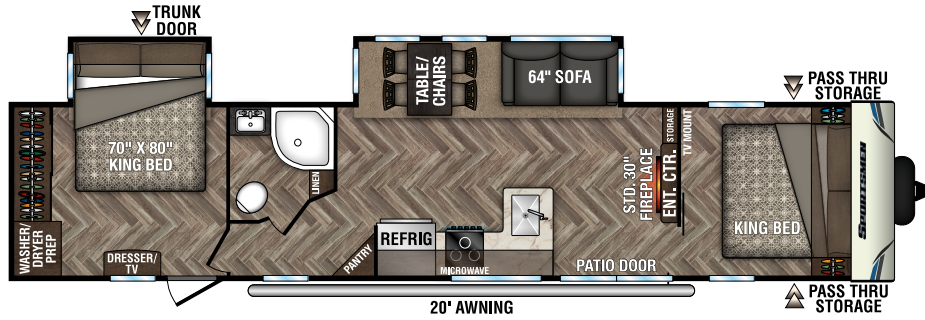
\*This weight reflects the rolling average unit weight for each model. Your trailer weight will vary according to optional equipment.

# 2020 SPORTSMEN DESTINATION TRAILERS

362BH



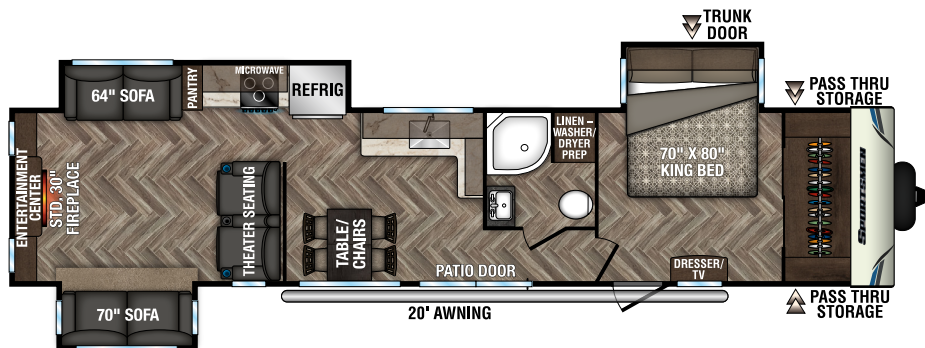
362DB



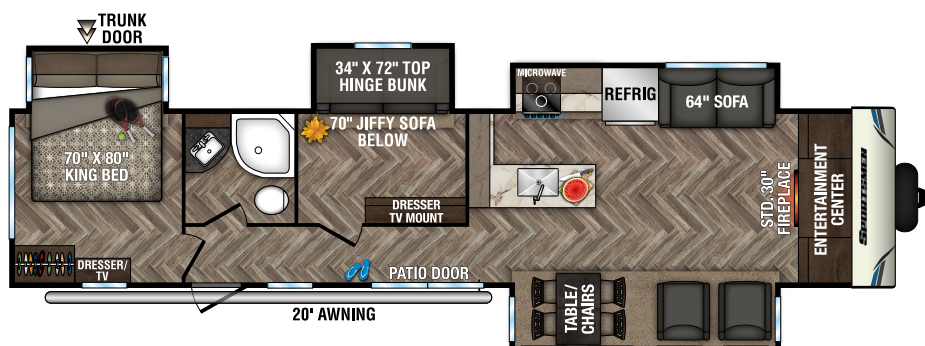
363FL



363RL



364BH



985 N 900 W SHIPSEWANA, IN 46565

E: KZ@KZ-RV.COM

WWW.KZ-RV.COM

Due to continual research and advances, manufacturer reserves the right to change specifications, design, price and equipment without notice, and assumes no responsibility for any error in this literature. Some items shown are not included as standard or optional equipment.

©2019KZ | 2/4/20 | 20M