



RECREATIONAL
VEHICLES

SPORTSMEN

DESTINATION TRAILERS & FIFTH WHEELS

SPORTSMEN



SPORTSMEN
DESTINATION TRAILERS & FIFTH WHEELS

INTERIOR

DESTINATION TRAILER

RELAX IN STYLE!

Spend more quality time at your perfect lake spot. **SPORTSMEN DESTINATION TRAILERS** offer our most residential living experience, with spacious floorplans and all the best amenities, like 70 x 80-inch king beds and washer/dryer prep. Ample storage, residential appliances and super-sized panoramic window views make this travel trailer comfy and livable for the duration. Your favorite camping spot awaits!



KITCHEN

- stainless sink with hi-rise faucet
- house-sized refrigerator
- gas cooktop with glass cover and oven
- microwave and range hood
- spacious dining

363FL | Almond décor



BEDROOM BLISS

Closet with washer/dryer prep, or use the space for shelving. Walk-around 70 x 80-inch pillow top king and window-view dresser, full-size closet with mirrored bypass doors, with more storage cabinets below. (363FL shown)

363FL | Almond décor



LIVE LARGE

Super-sized double slideouts with panoramic windows, standard LED TV and 30-inch fireplace are included in the 363FL.



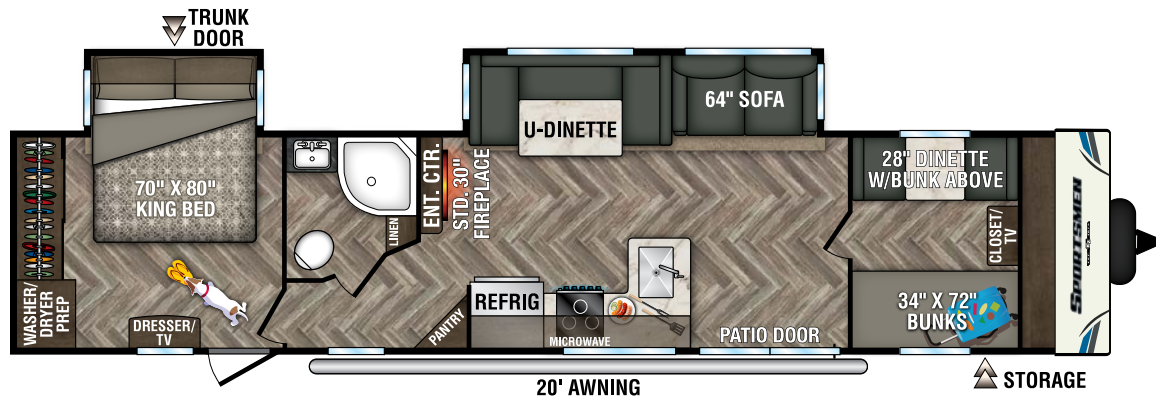
The two **OPPOSING SLIDEOUTS** and **SURROUNDING WINDOWS** really make this floorplan stand out and feel airy! (363FL shown)



SPA BATH

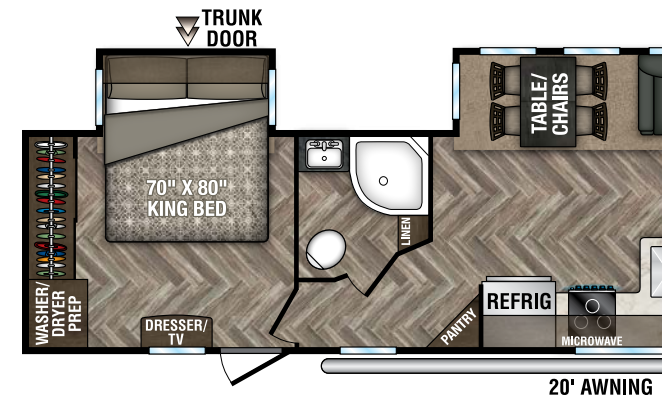
Radius shower with surround and skylight, mirrored medicine cabinet, foot-flush toilet, power vent, and color-accented shower surround. (363FL shown)





362BH

UVW - 8,390 | Exterior Length - 40' 7" | Sleeps 10



362DB

UVW - 8,240 | Exterior Length - 40' 7" | Sleeps 6

STANDARDS

- KZ Exclusive Tough Shield Exterior Metal
- 5/8" Tongue & Groove Plywood Floor
- New Aerodynamic Front Profile
- Diamond Plate Rock Guard on Front of Travel Trailers
- 3/8" Fully Walk-On Roof Decking
- 1-Piece, Seamless, Walk-on, Tufflex Roofing Material w/15-Year Warranty
- Awning w/Drip Rail & Spouts
- Tinted Windows
- Super-Sized Panoramic Slideout Window
- Radius Entry Door
- Smooth Screwless Baggage Doors
- LED Pass-Through Storage Light
- Cable Hookup
- Digital TV Antenna w/Booster
- Self-Adjusting Electric Brakes
- Radial Tires
- Rear Bumper w/Sewer Hose Storage
- Winter Bypass Kit
- 2 or 4 Stabilizer Jacks (model specific)
- Outside Shower
- (2) 30# Gas Bottles w/Bottle Cover
- 30 AMP Service
- 13,500 BTU A/C
- 3-Burner Cooktop
- Range Hood w/12V Light & Exhaust Fan

- Microwave w/Turntable
- Oven
- Acrylic Sink w/High-Rise Faucet
- Roller Ball Bearing Drawer Guides
- Large Overhead Cabinets
- LED Interior Lighting
- Monitor Panel
- Built-In Medicine Cabinet w/Mirror in Bath
- Shower Surround
- Power Vent in Bath
- Skylight over Shower
- Reversible Quilted Comforter
- Main Bedroom Roof Vent

OPTIONS

- Color-Infused Ivory Exterior Fiberglass
- 15,000 BTU A/C IPO 13,500 BTU A/C
- 2nd A/C (13,500 BTU)
- 30" Fireplace (Std.)
- Bedroom LED TV w/Inside/Outside Bracket
- Radiant Technology Package (foil in floor, roof, front, rear)
- Freestanding Dinette Table & 4 Chairs IPO Dinette (required on 363FL, 363RL, 364BH)
- Tri-Fold HAB Sofa IPO Jackknife (required on 363FL, 363RL, 364BH)
- Plumb for Washer/Dryer w/50 AMP & 2nd A/C prep (Std.) (only 50 AMP standard on 364BH)

- Theater Seating w/Heat & Massage Features IPO Jackknife (required on 363RL)
- Front & Rear Electric Stabilizer Jacks
- Aluminum Wheels
- Power Vent Fan LR or Bath
- Wireless Backup Camera System - Observation
- Roof Ladder
- DT Package - Add Spare Tire & Alumitread Entry Steps
- Ottoman w/Storage

KZ ADVANTAGE PACKAGE

(MANDATORY OPTION)

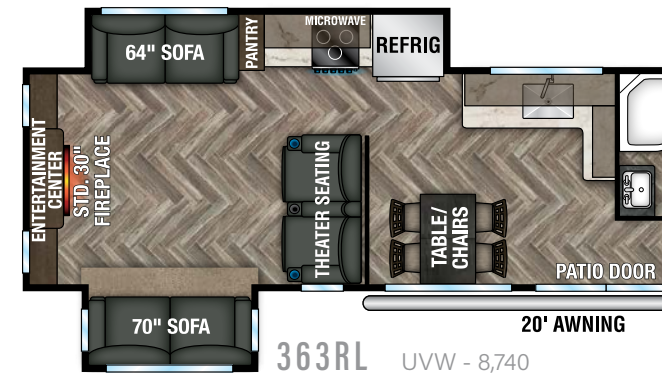
EXTERIOR

- New Aerodynamic Front Profile w/Smooth Metal Front
- 5/8" Tongue & Groove Plywood Floor
- Key-Alike for Baggage & Entry Doors
- Friction Hinge Entry Door w/Shade Prep
- Large Folding Grab Handle
- Amber Step Light
- Power Front Jack
- Nitrogen-Filled Tires
- Exterior Speakers
- Battery Disconnect Switch
- Black Tank Flush
- Backup Camera Prep
- Solar Prep

- Climate Package (heated, insulated & enclosed underbelly)
- Leash Latch w/Bonus Beverage Opener

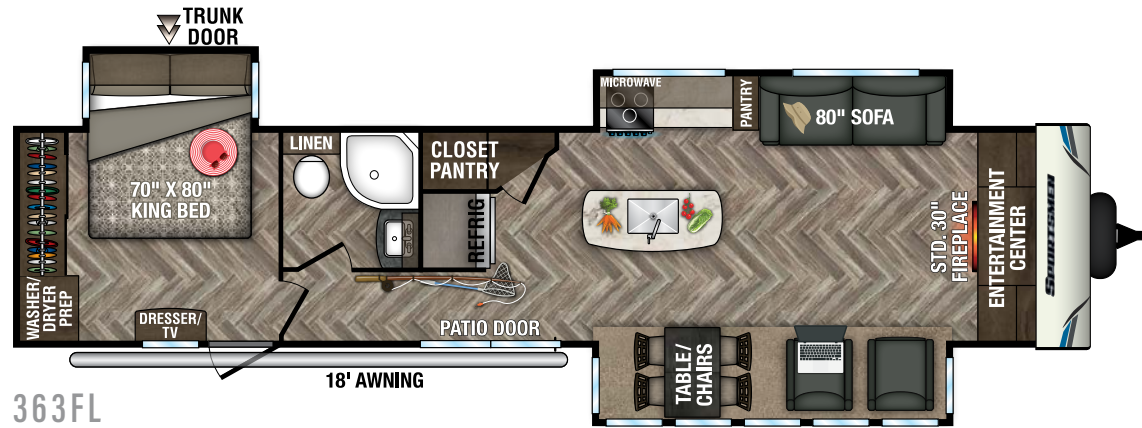
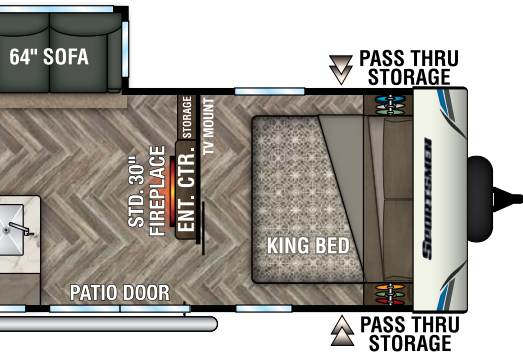
INTERIOR

- Seamless Countertops w/Deep Undermount Stainless Steel Kitchen Sink
- Sink Cover
- Drop-In Cooktop w/Glass Cover & Oven
- Kitchen Skylight
- 36" Storage Bins in Booth Dinette
- Bright White LED Light Strip above Main LR Slide Room(s)
- Jackknife w/Middle Console & Bolster Arms

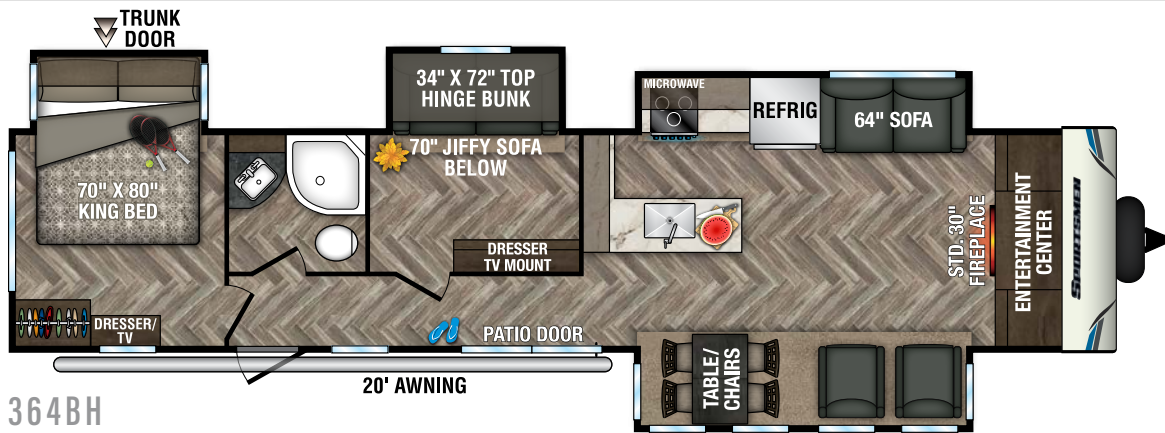
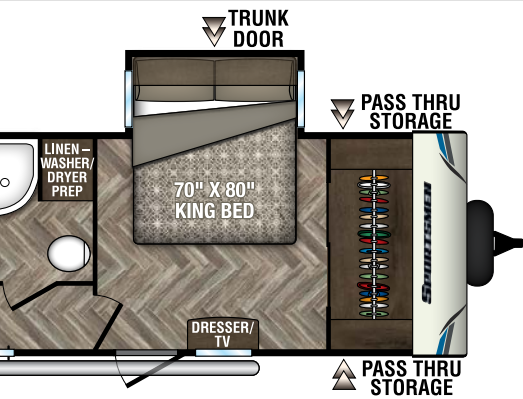


363RL

UVW - 8,740
Exterior Length - 40' 7" | Sleeps 6



363FL
 UVW - 8,970 | Exterior Length - 40' 7" | Sleeps 4



364BH
 UVW - 9,340 | Exterior Length - 41' 0" | Sleeps 6

KZ CONVENIENCE PACKAGE

(MANDATORY OPTION)

EXTERIOR

- Power Awning w/LED Light Strip
- Magnetic Baggage Door Catches
- LED Lights in Storage Area
- Battery Disconnect Switch
- Omnidirectional HDTV Antenna w/Wi-Fi Prep
- LED Lights in Exterior Speakers

INTERIOR

- Residential Grade Linoleum
- 8 CU FT Gas/Electric Refrigerator (110V in DTs)
- Stainless Steel Residential Kitchen Faucet w/Spring Sprayer
- Interior Control Switches on OH End Cabinet w/Convenience Center for Switches
- Dark Accent Trim on Corners/Entry Doors
- Electric Outlet in Bunk Area
- Stainless Steel Microwave

2020 DÉCOR

ALMOND

WALNUT

Sportsmen Destination Trailers	362BH	362DB	363FL	363RL	364BH
UVW (Unloaded Vehicle Weight)*	8,390	8,240	8,970	8,740	9,340
Dry Hitch Weight*	1,260	1,230	1,570	1,210	1,830
Dry Axle Weight*	7130	7010	7400	7530	7510
NCC (Net Carrying Capacity)	2,070	2,220	1,490	1,720	1,120
GVWR	10,460	10,460	10,460	10,460	10,460
Interior Height	82"	82"	82"	82"	82"
Exterior Height w/ A/C	11' 4"	11' 4"	11' 4"	11' 4"	11' 4"
Exterior Width	96"	96"	96"	96"	96"
Exterior Length	40' 7"	40' 7"	40' 7"	40' 7"	41' 0"
Refrigerator (cu. feet)	18	18	18	18	18
Water Heater Cap. (gal. G/E w/DSI)	6	6	6	6	6
Fresh Water Cap. (gal.)	40	40	40	40	40
Waste Water Cap. (gal.)	32	32	32	32	32
Gray Water Cap. (gal.)	64	64	64	32	64
LP Gas Cap. (lbs.)	60	60	60	60	60
Furnace BTUs (1,000s)	30	30	30	30	30
Tire Size	15"	15"	15"	15"	15"
Awning	20'	20'	18'	20'	20'

*This weight reflects the rolling average unit weight for each model. Your trailer weight will vary according to optional equipment.

AMENITIES TO LIVE BY!

With several floorplans to choose from, affordable **SPORTSMEN 5TH WHEELS** allow you to travel in comfortable, worry-free style. Contemporary décor elements, clean white fiberglass exterior and a mid-profile look make the journey just as amazing as the destination. Enjoy all the standard amenities or choose some great upgrades, like a fireplace and theater seating. Some models even offer an outdoor kitchen and double bunks.



ENTERTAINMENT CENTER with standard 39-inch LED TV, multi-media soundbar, stereo with Bluetooth, HDMI and USB charge, as well as optional 30-inch fireplace.

292BHK | Coffee décor



36-inch removable storage bins under the dinette seats allow for easy loading in the house, and convenient access while in use. (292BHK shown)



YOU HAVE OPTIONS

The sofa is standard, or choose optional theater seating. (292BHK shown)

292BHK | Coffee décor



Not only do Sportsmen 5th wheels offer tons of storage, kitchens include a 3-burner cooktop with hinged glass cover, oven, microwave with turntable, and a large stainless steel sink with high-rise faucet.

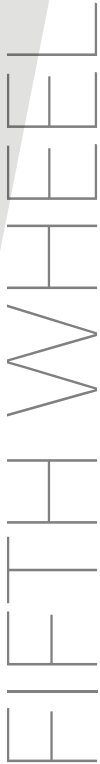


REST EASY
Walk-around queen with mirrored his-and-hers full-length side closets, plus overhead storage. (292BHK shown)



BATHS include shower surround with skylight over shower, power vent, and medicine cabinet with mirror. (292BHK shown)





STANDARDS

- 5/8" Tongue & Groove Plywood Floor
- New Aerodynamic Front Profile
- Enclosed Pin Box
- 3/8" Fully Walk-On Roof Decking
- 1-Piece, Seamless, Walk-on, Tufflex Roofing Material w/15-Year Warranty
- Awning w/Drip Rail & Spouts
- Tinted Windows
- Super-Sized Panoramic Slideroom Window
- Radius Entry Door
- Smooth Screwless Baggage Doors
- LED Pass-Through Storage Light
- Cable Hookup
- Digital TV Antenna w/Booster
- Self-Adjusting Electric Brakes
- Radial Tires
- Rear Bumper w/Sewer Hose Storage
- Winter Bypass Kit
- (2) or (4) Stabilizer Jacks (model specific)
- Outside Shower
- (2) 30# Gas Bottles w/Bottle Cover
- 30 AMP Service
- 13,500 BTU A/C
- 3-Burner Cooktop
- Range Hood w/12V Light & Exhaust Fan
- Microwave w/Turntable
- Oven
- Stainless Steel Sink w/High-Rise Faucet
- Roller Ball Bearing Drawer Guides
- Large Overhead Cabinets
- LED Interior Lighting
- Monitor Panel
- Built-In Medicine Cabinet w/Mirror in Bath
- Shower Surround
- Power Vent in Bath
- Skylight over Shower
- Queen Mattress
- Reversible Quilted Comforter
- Main Bedroom Roof Vent
- Aluminum Wheels

OPTIONS

- Polar White Exterior Fiberglass (required)

- 15,000 BTU A/C IPO 13,500 BTU A/C (required)
- 50 AMP Service w/2nd A/C Prep (required on 303RL, 344BH)
- 2nd A/C (15,000 BTU)
- 2nd A/C ducted (15,000 BTU) - Mach 10 Low Pro
- 30" Fireplace (N/A 231RK)
- Bedroom LED TV w/Inside/Outside Bracket
- Radiant Technology Package (foil in floor, roof, front, rear)
- F/S Dinette Table & 4 Chairs IPO Dinette
- Tri-Fold HAB Sofa IPO Jackknife
- Plumb for Washer/Dryer w/50 AMP & 2nd A/C prep
- Theater Seating w/Heat & Massage Features IPO Jackknife (231RK, 251RL) (required on 303RL, 344BH)
- Electric Rear Stabilizer Jacks
- 10 CU FT 12V Refrigerator IPO 8 CU FT Gas/Electric Refrigerator
- Central Vac System
- Power Vent Fan LR or Bath (required on 302BHK)
- Trundle Bed IPO Dinette in Bunk Slide (302BHK)
- Wireless Backup Camera - Observation & Vision S
- Bumper Mount Grill (231RK, 251RL, 303RL, 344BH)
- Roof Ladder
- 2nd LED Lighted Power Awning (303RL, 344BH)
- Ottoman w/Storage

KZ ADVANTAGE PACKAGE (MANDATORY OPTION)

EXTERIOR

- Flip-Up Entry Steps
- 5/8" Tongue & Groove Plywood Floor
- Key-Alike for Baggage & Entry Doors
- Friction Hinge Entry Door w/ Shade Prep
- Large Folding Grab Handle
- Amber Step Light
- Power Front Jack
- Spare Tire

- Equa-Flex® Suspension
- Nitrogen-Filled Tires
- Flip-Down 71" Storage Rack
- Exterior Speakers
- Battery Disconnect
- Black Tank Flush
- Backup Camera Prep
- Solar Prep
- Climate Package (heated, insulated & enclosed underbelly)
- Leash Latch w/Bonus Beverage Opener

INTERIOR

- Seamless Countertops w/Deep Undermount Stainless Steel Kitchen Sink
- Sink Cover
- Drop-In Cooktop w/Glass Cover & Oven
- Kitchen Skylight
- 36" Storage Bins in Booth Dinette
- Bright White LED Light Strip above Main LR Slide Room(s)
- Jackknife w/Middle Console & Bolster Arms
- 2 Motion Sensor Lights
- LED TV

- Multiple Media Stereo w/DVD/Bluetooth/HDMI/USB Charge
- (2) 6.5" Interior Speakers
- Pleated Shades
- Foot-Flush Toilet
- Plywood Bed Base
- Upper Bunk Windows (select models)
- Pillowtop Mattress
- Push-Back Recliners (select models)
- Wider Pocket/Passage Interior Doors
- Color Accented Shower Walls

KZ CONVENIENCE

PACKAGE

(MANDATORY OPTION)

EXTERIOR

- KZ Engage powered by OneControl w/5" screen - FWs (control system monitors tank levels & battery levels, controls sliderooms, awnings, inside/outside lighting)
- Power Awning w/LED Light Strip
- 16" Tires w/Aluminum Wheels (N/A 231RK)

- Magnetic Baggage Door Catches
- LED light in Storage Area
- Battery Disconnect Switch
- Omnidirectional HDTV Antenna w/Wi-Fi Prep
- LED Lights in Exterior Speakers

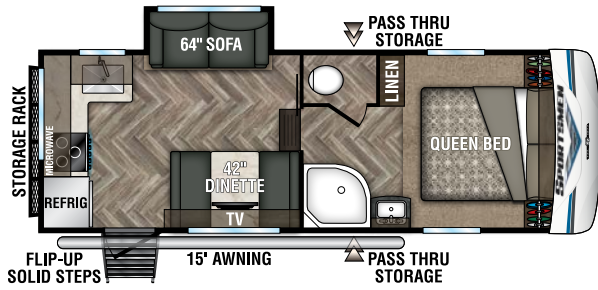
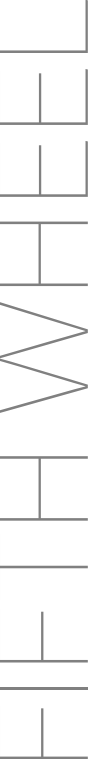
INTERIOR

- Residential Grade Linoleum
- 8 CU FT Gas/Electric Refrigerator w/Temperature Controls
- Stainless Steel Residential Kitchen Faucet w/Spring Sprayer
- Surfex® Wood Step in FW Hallway
- Interior Control Switches on OH End Cabinet w/Convenience Center for Switches
- Dark Accent Trim on Corners/Entry Doors
- Electric Outlet in Bunk Area
- Stainless Steel Microwave

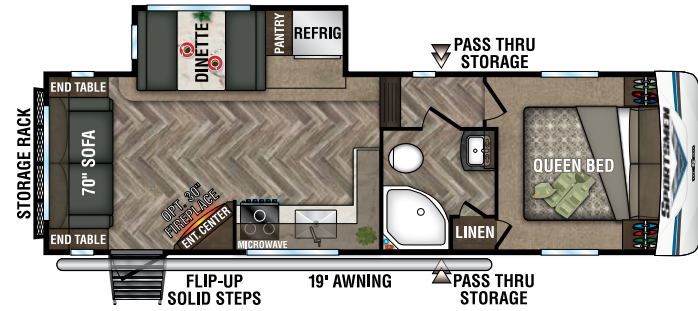
Sportsmen Fifth Wheels	231RK	251RL	292BHK	302BHK	303RL	344BH
UVW (Unloaded Vehicle Weight)*	6,170	7,030	8,290	8,810	8,700	10,200
Dry Hitch Weight*	840	1,280	1,530	1,250	1,470	1,850
Dry Axle Weight*	5,330	5,750	6,760	7,560	7,230	8,350
NCC (Net Carrying Capacity)	830	1,470	1,710	1,190	1,300	1,795
GVWR	7,500	8,500	10,000	10,000	10,000	11,995
Interior Height	75"	75"	75"	75"	75"	75"
Exterior Height w/ A/C	11' 11"	12'	12' 5"	12' 5"	12' 5"	12' 7"
Exterior Width	96"	96"	96"	96"	96"	96"
Exterior Length**	25' 3"	29' 3"	35' 3"	36' 2"	34' 6"	39' 3"
Refrigerator (cu. feet)	8	8	8	8	8	8
Water Heater Cap. (gal. G/E w/DSI)	6	6	6	6	6	6
Fresh Water Cap. (gal.) [Including Water Heater Capacity]	40	40	40	40	40	40
Waste Water Cap. (gal.)	53	53	53	64	53	53
Gray Water Cap. (gal.)	85	53	53	32	53	53
1/2 Bath Cap. (gal.)	N/A	N/A	N/A	40	N/A	N/A
LP Gas Cap. (lbs.)	60	60	60	60	60	60
Furnace BTUs (1,000s)	30	30	30	30	30	30
Tire Size	15"	16"	16"	16"	16"	16"
Awning	15'	19'	17'	18'	13'/11' opt.	17'/11' opt.

*This weight reflects the rolling average unit weight for each model. Your trailer weight will vary according to optional equipment.

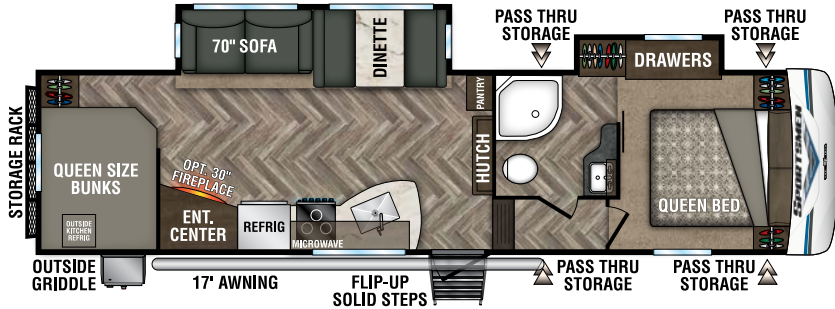
**Exterior length is measured from center of hitch pin to rear bumper.



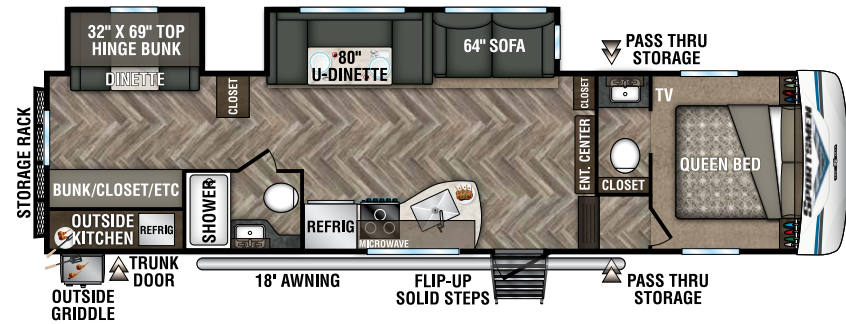
231RK UVW - 6,170 | Exterior Length - 25' 3" | Sleeps 5



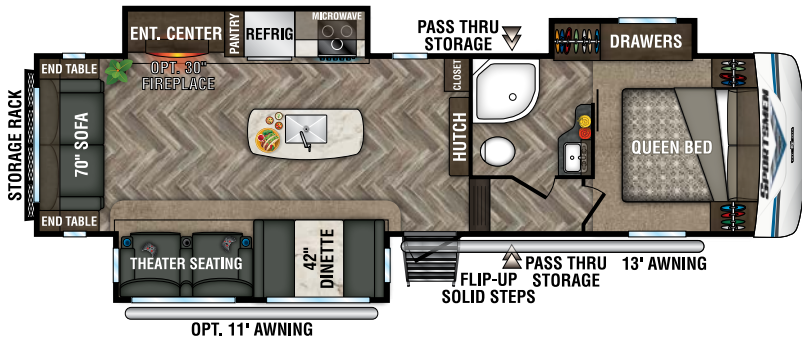
251RL UVW - 7,030 | Exterior Length - 29' 3" | Sleeps 5



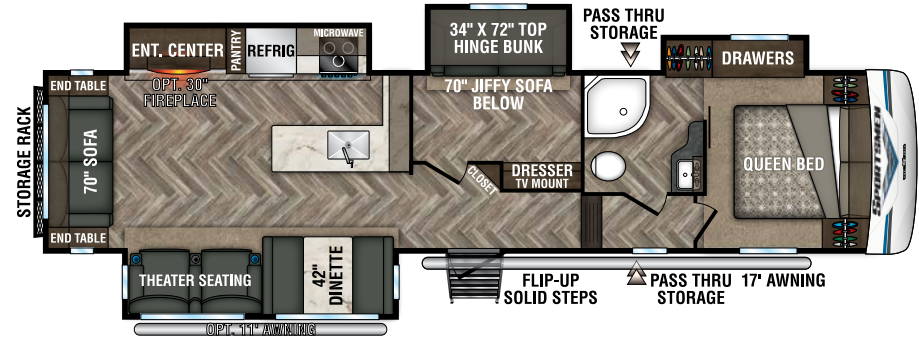
NEW
292BHK UVW - 8,290 | Exterior Length - 35' 3" | Sleeps 9



302BHK UVW - 8,810 | Exterior Length - 36' 2" | Sleeps 10



303RL UVW - 8,700 | Exterior Length - 34' 6" | Sleeps 5



344BH UVW - 10,200 | Exterior Length - 39' 3" | Sleeps 7

2020 DÉCOR

ALMOND

WALNUT



RACK IT
Flip-down
70-inch storage
rack with
200-pound
capacity.
(292BHK shown)



Standard 8 CU FT gas/electric, or choose the optional 10 CU FT 12V **REFRIGERATOR** (shown). Both offer room for all your camping goodies.

Generous kitchen **PANTRY** with tall, deep shelves, and front retention lips to keep everything in place.



INTERIOR FEATURES



Convenient shelf with two USB ports in all 5th wheels.



COOKTOP offers recessed, three-burner work area with a glass cover, and LED accented oven knobs.



STAINLESS STEEL under-mount sink with high-rise faucet with pull-down spring sprayer.



FLEXIBLE



PUNCTURE RESISTANCE



REFLECTIVE

TUFFLEX ROOFING by Dicor Products
15-YEAR WARRANTY!

SPORTSMEN EXTERIOR FEATURES



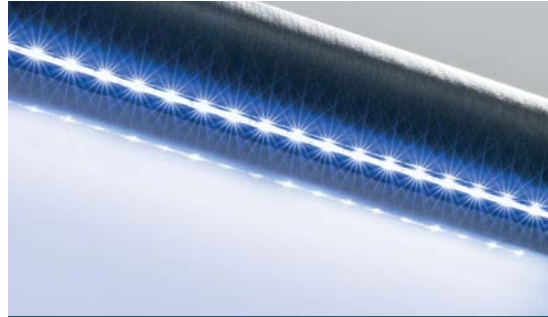
FLIP-UP ENTRY STEP provides solid footing and folds away neatly. The friction-hinged entry door with grab bar and screen-shot feature eliminates slamming, for safe and easy passage. (5th wheels)



5/8-INCH TONGUE AND GROOVE PLYWOOD floor decking



STANDARD ALUMINUM WHEELS with nitrogen-filled radial tires. (FWs only)



POWER AWNING WITH LED light strip provides relaxing nighttime ambience.



Added insulation so you can extend the camping season, with a fully enclosed, insulated and heated underbelly to protect tanks and pipes (R-9 sidewalls, R-20 roof, and R-24 floor).



SECURE STORAGE
Large finished basement pass-through storage with motion light, magnetic catches and slam-latch door.



BACKUP CAMERA PREP
Furrion observation camera is an easy add-on, and offers peace of mind.



Two **EXTERIOR SPEAKERS** with LED accent lighting are standard



BATTERY DISCONNECT helps conserve battery life.



LIGHTED TONGUE JACK assists setup and teardown. (destination trailers)



OUTSIDE SHOWER with hot and cold faucets.

DOWNLOAD YOUR FREE KZ RV APP TODAY!

Owning and operating an RV has never been easier. Everything you need is now in the palm of your hand.

- Track RV Maintenance
- Keep RV Service Close
- Set Custom Notifications
- Reference Checklists for RV Trips

DOWNLOAD NOW!

VISIT KZ-APP.COM TO LEARN MORE.



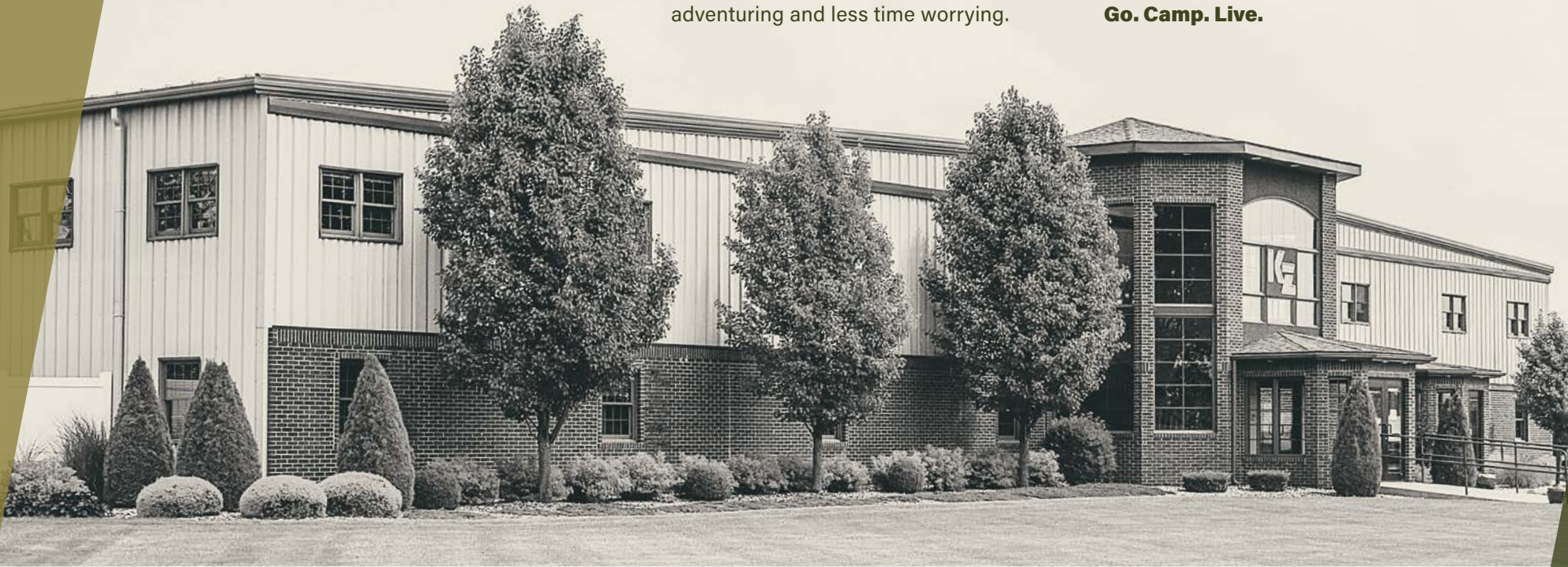
RECREATIONAL VEHICLES

HANDCRAFTED TO HIGH STANDARDS

In 1972, Sam King and Daryl Zook built a truck camper—and built a better way to camp. Since then we’ve built recreational vehicles with a focus on craftsmanship and quality, so you can spend more time adventuring and less time worrying.

When you hitch to a KZ Recreational Vehicle, you can expect adventure, good times, and old-world values. We care about your camping experience. Because your KZ is where the journey starts.

Go. Camp. Live.



The KZ **True 2 Warranty** is a **2-year hitch-to-bumper limited warranty** that's true to its name. The gold standard in RV protection, True 2 provides double the coverage of the industry norm. Plus, our warranty is backed by the craftsmanship and quality we're known for, so you can Go. Camp. Live. Wherever your adventure takes you, know that you're covered in your KZ.

Dealer:

