

**DURANGO HALF-TON**

LIGHTWEIGHT LUXURY FIFTH WHEELS



RECREATIONAL  
VEHICLES

# DURANGO

## HALF-TON



**DURANGO HALF-TON**  
LIGHTWEIGHT LUXURY FIFTH WHEELS



## READY FOR FIFTH-WHEELING, BUT STILL WANT TO TRAVEL LIGHT?

The all-new **DURANGO HALF-TON** was made for you, with uncompromising quality and indulgence, and at a lighter price point.

This mid-profile rig is nicely equipped with standard features and sumptuous décor, and all the connectivity and entertainment features you need to keep the troops happy.

- Eight floorplans
- All floorplans under 12,000 pounds GVWR
- Hitch-to-bumper two-year full-timer's warranty



**KITCHEN** features maple-glazed cabinetry, a stainless steel sink, seamless solid countertops, oven, and a gas cooktop with glass cover.

**LED TV & MULTI-MEDIA STEREO** with DVD, Bluetooth and wireless connectivity with **COZY AMBIENCE** from the optional 40-inch wide-view fireplace. (D294MBQ shown)



**STYLISH MASTER BEDROOM** featuring LED lights, a padded headboard shelf with outlets, and 60" x 80" standard queen bed, that lifts up to reveal under-bed storage. Select models offer wardrobe slides. (D294MBQ shown)



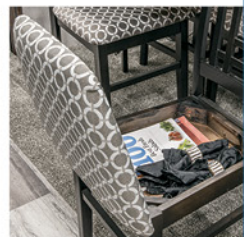




D283RLT | Havana décor



Deep undermount  
**STAINLESS SINK**  
cover and residential  
faucet with spring  
sprayer



**RESIDENTIAL-GRADE  
FURNISHINGS** include a  
standard trifold hide-a-bed  
sofa, optional freestanding  
dinette table with a stow-leaf,  
and hinged dinette seats that  
offer additional storage.



**LUXURY  
BATHROOM**  
incorporates  
linen closet,  
bathroom  
drawers,  
stainless steel  
sink, 36-inch  
shower with  
shelf space  
and skylight.  
(D283RLT shown)



Double door gas/electric  
**8 CU FT REFRIGERATOR**  
with temperature controls



**CONSTRUCTION FEATURES**

- Steel Powder Coated Frame
- R-11 2" Block Foam Bonded Sidewalls w/EGS Metal Backing Strips (to support all int. cabinets)
- Lamilux® Gelcoat Fiberglass
- 1-Piece ABS Slideroom Bottoms; Slideroom Floors Insulated
- 1-Piece, Seamless, Walk-on, Tufflex Roofing Material w/15-Year Warranty
- Pex® In-Floor Heated Waterlines & Kitchen Gray Pipes (all waterlines & drainlines are located above all insulation)
- Reinforced Heavy-Duty Fiberglass Front Cap (w/maximum turning radius on short bed trucks)
- 6' 2" Tall Main Floor Sliderooms

**EXTERIOR FEATURES**

- Dexter® Axles w/Self Adjusting Brakes & Height Adjusting Hangers
- 6-Lug Heavy-Duty Aluminum Rims w/16" Nitro Filled Tires
- 100% Exterior LED Running Lights & Taillights
- LED Front Docking Light & Sewer Hookup Light
- Electric Awning w/LED Lights
- Electric Front Jacks
- 3" x 14" Foam-Core In-Floor Straight-Line Heating System w/35,000 BTU Furnace
- Heated Water Convenience Center (incl. black tank flush, power fresh tank water fill, winterizing system, outside shower)
- Fully-Finished, Heated & Sealed Basement Storage Compartment
- Heated & Enclosed Dump Valves
- Gas/Electric/DSI Water Heater
- Swing-Away Assist Grab Handle
- Dual Lock Basement Storage Slam Latches
- Satellite Pre-Wire (roof & ground)
- Outside Speakers & Pre-Wired for Exterior TV
- Full-Perimeter Rain Gutter System (incl. rear & additional gutters over sliderooms)
- LP Quick Connect

- Under Mount Spare Tire
- 30 AMP Electrical Service

**LIVING ROOM / KITCHEN FEATURES**

- Pullout Sprayer Faucet
- Storage Shelf under Kitchen Sink
- Heavy-Duty 100 LB Drawer Glides on Every Drawer
- Baltic Birch Drawer Boxes
- Microwave
- Kitchen Window (most models)
- All-Wood Lumber Core Cabinets w/Hardwood Doors
- 5" Stainless Steel Cabinet Hardware
- 3/8" Re-Bond Carpet Pad w/22 OZ Residential Carpet
- XL Toggle Light Switches
- All LED Ceiling & Cabinet Lights w/ Multiple On/Off Switches
- All Kitchen OH Cabinets have Shelf & Extra-Tall Slide Lips

**BATHROOM / BEDROOM FEATURES**

- Shower Skylight
- Porcelain Foot-Flush Toilet
- All LED Lights in Bed & Bath w/ Multiple Large Switches
- 12V Vent Fans in all Baths
- Bathroom Linen Closet (where available)
- Padded Headboard w/Shelf & Power at the Head of all Beds
- XL Under-Bed Storage
- Bedroom TV Pre-Wire

**OPTIONS (EXTERIOR)**

- 50 AMP Service w/2nd A/C Prep (required)
- 2nd A/C Ducted (15,000 BTU)
- 2nd A/C Ducted (15,000 BTU) - Mach 10 Low Pro
- Dual Pane Windows (frameless)
- Electric Rear Stabilizer Jacks
- (4) Point Auto Electric Leveling
- Wireless Backup Camera - Observation & Vision S
- "Off the Grid" Solar Package
- 32" Exterior TV w/Bracket

- Generator Prep (includes start/stop harness)
- 5.0 KW LP Onan Generator (Req's Prep)
- 2nd LED Lighted Power Awning (D283RLT, D291BHT, D294MBQ)

**OPTIONS (INTERIOR)**

- 40" Wideview Fireplace (requires 50 AMP on D256RKT, D263RLT, D283RLT)
- Bedroom LED TV w/Inside/Outside Bracket
- F/S Dinette Table & 4 Chairs IPO Dinette (N/A D263RLT)
- Theater Seating w/Heat & Massage Features IPO Tri-Fold HAB (D250RES, D259RLS, D286BHD, D291BHT)
- Theater Seating w/Heat & Massage Features (required on D256RKT, D263RLT, D283RLT, D294MBQ)
- 10 CU FT Refrigerator 12V IPO 8 CU FT Gas/Electric Refrigerator
- Power Vent Fan in Main Area or Bathroom
- Central Vac System (N/A D250RES)
- Solid Surface Kitchen Countertops
- 12 CF Gas/Electric Refrigerator IPO 8 CU FT Refrigerator & Pantry
- Ottoman w/Storage

**KZ ADVANTAGE PACKAGE (MANDATORY OPTION)**

- Polar White Gelcoat Exterior Fiberglass
- Partial Painted Fiberglass Front Cap
- 5-Sided Aluminum Framing
- Flip-Up Entry Steps (main entry)
- 15K Ducted A/C
- 5/8" T&G Plywood Floor
- Key-Alike for Baggage & Entry Doors
- Friction Hinge Entry Door w/Shade Prep & Screenshot Features
- X-Large Folding Grab Handle
- Power Front Jacks
- Undermount Spare Tire
- Equa-Flex® Rubberized Suspension
- Nitrogen-Filled Tires
- Battery Disconnect
- Black Tank Flush

- Backup Camera Prep
- Roof Mounted Solar Prep w/Connection
- Climate Package (heated, insulated & enclosed underbelly)
- 2" Towing Receiver Hitch w/4 Pin Wire Harness Connection (3,000 LB tow rating & 300 LB hitch rating)
- Roof Ladder
- Fully-Vented Attic System w/2 Attic Vents
- Leash Latch w/Bonus Beverage Holder

**INTERIOR**

- Maple Glazed Cabinetry
- Glazed Solid Hardwood Slideout Fascia
- Seamless Countertops w/Deep Undermount Stainless Steel Kitchen Sink w/Sink Cover
- Trash Can Under Sink
- Drop-In Cooktop w/Glass Cover & Oven
- Kitchen Skylight
- 36" Pullout Storage Bins in Booth Dinette
- Tri-Fold HAB Sofa
- (2) Motion Sensor Lights
- LED TV
- Multiple Media Stereo w/ DVD/Bluetooth/NFC Wireless Connectivity
- 12V Dual USB Charging Station
- Pleated Shades
- Porcelain Foot-Flush Toilet
- Stainless Steel Bathroom Sink
- Large 30" x 36" Shower & Surround
- Plywood Bed Base
- Upgraded Black Label 60" x 80" Queen Pillowtop Mattress
- Color Accented Shower Walls
- Legless Table Base for Dinette Table & Chairs (select models)
- Pocket Door for Bathroom

**KZ CONVENIENCE PACKAGE (MANDATORY OPTION)****EXTERIOR**

- KZ Engage Powered by OneControl w/5" Screen (control system monitors tank levels & battery levels, controls slide rooms, leveling system, awnings, inside/outside lighting)
- Power Awning w/LED Light Strip
- 16" Tires w/Aluminum Wheels
- Magnetic Catches for Baggage Doors
- Omnidirectional HDTV Antenna w/Wi-Fi Prep
- LED Lights in Exterior Speakers

**INTERIOR**

- Residential Grade Linoleum
- 8 CU FT Gas/Electric Refrigerator w/Temperature Controls
- Matte Black Residential Kitchen Faucet w/Spring Sprayer
- Surfex Wood Step in FW Hallway
- Interior Control Switches on Overhead End Cabinet w/Convenience Center for Switches
- Wood Accent Trim on Corners/Entry Doors
- Electric Outlet in Bunk Area
- Stainless Steel Microwave
- Vision S Prep (blind spot monitoring)

**BONUS FEATURES**

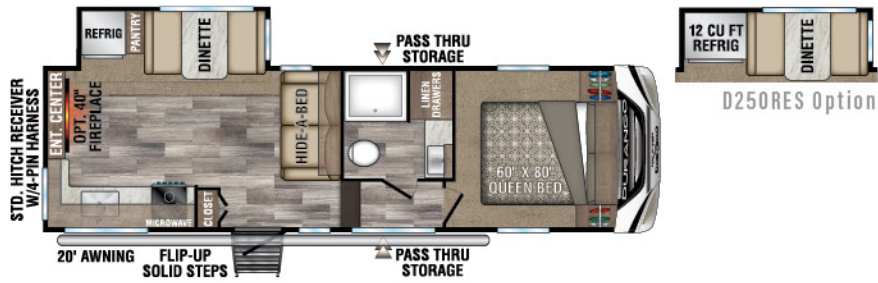
- 2-Year Limited Warranty (see flyer)
- KZ has received the Dealer Satisfaction Index Award for 19 years
- KZ's 48 years of stable, dedicated manufacturing experience, coupled with its predominant Amish workforce, heritage and commitment to superb quality, allow us to produce the lowest-priced luxury fifth wheel available.

**2020 DÉCOR**

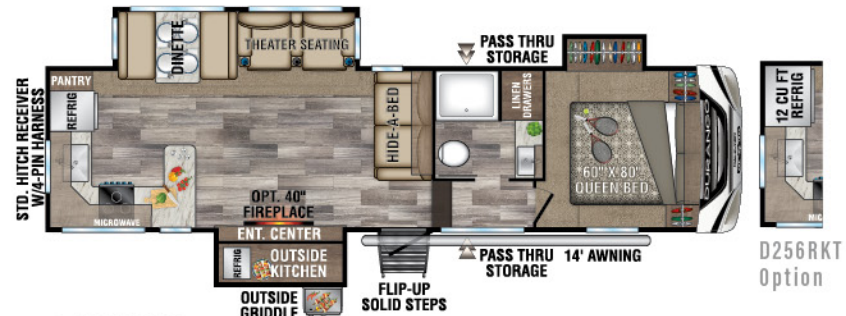
HAVANA

SEA SALT

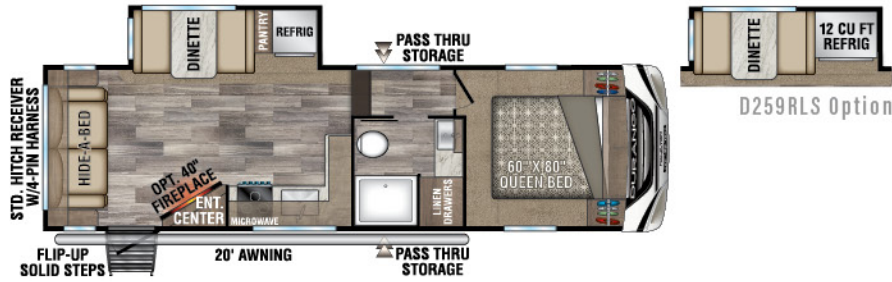




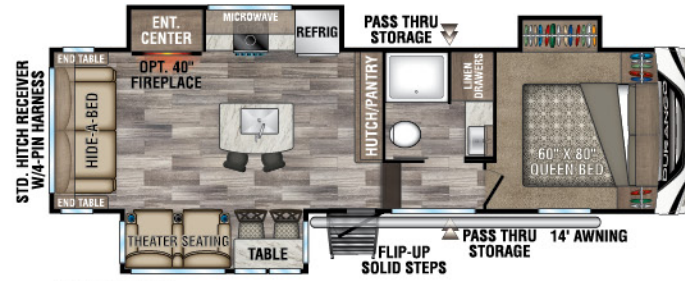
**D250RES** UVW - 7,300 | Exterior Length - 29' 1" | Sleeps 6



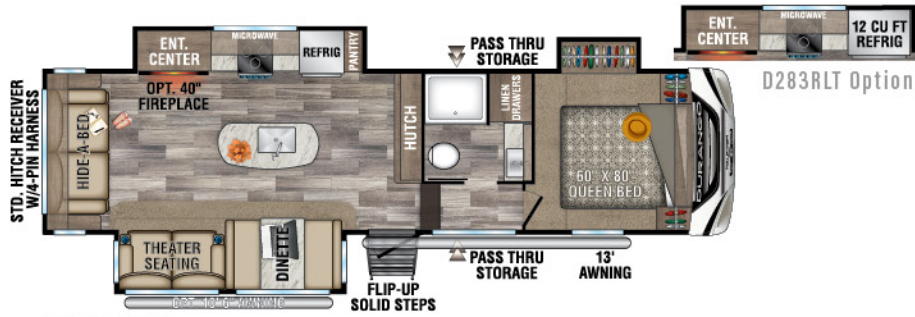
**D256RKT** UVW - 8,860 | Exterior Length - 33' 9" | Sleeps 6



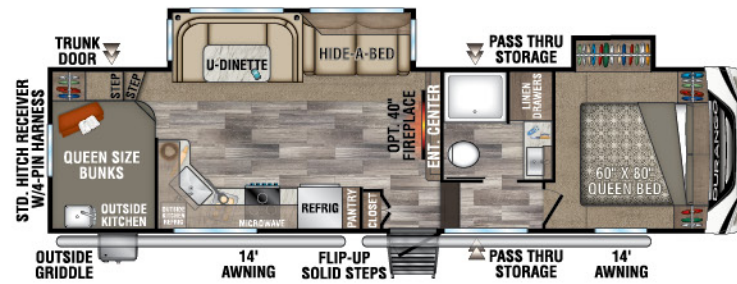
**D259RLS** UVW - 7,340 | Exterior Length - 29' 6" | Sleeps 6



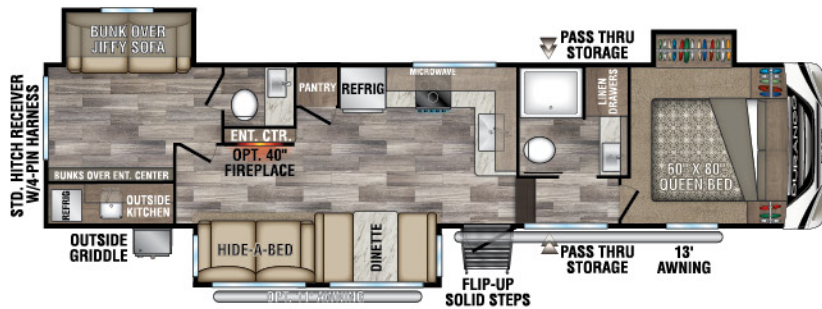
**D263RLT** UVW - 8,510 | Exterior Length - 30' 7" | Sleeps 4



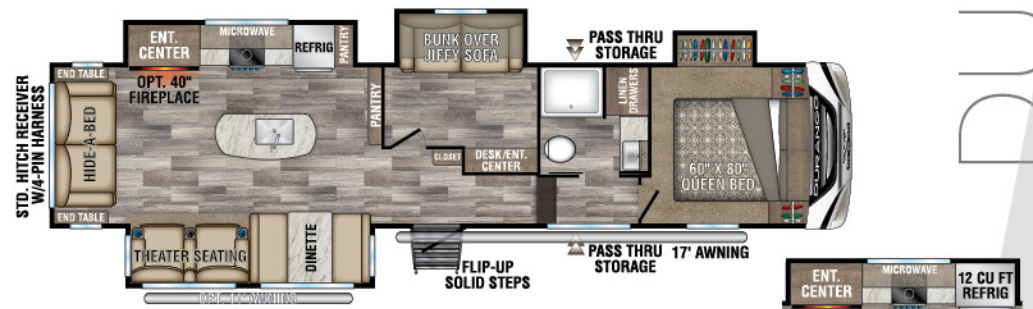
**D283RLT** UVW - 8,810 | Exterior Length - 32' 11" | Sleeps 6



**D286BHD** UVW - 8,480 | Exterior Length - 33' 7" | Sleeps 10



**D291BHT** UVW - 9,600 | Exterior Length - 37' 5" | Sleeps 9



**D294MBQ** UVW - 10,160 | Exterior Length - 38' 2" | Sleeps 8

**D294MBQ Option**



## 100 LB ball bearing DRAWER GUIDES



Drop-in **COOKTOP** with  
glass cover and **OVEN**



**THEATER SEATING**  
with heat,  
massage, and  
LED lighted  
cupholders  
(on select models)



## INTERIOR FEATURES



Fully-heated, insulated and  
enclosed underbelly! R-11  
sidewalls, R-24 roof and floor.



**FLEXIBLE**



**PUNCTURE  
RESISTANCE**



**REFLECTIVE**

**TUFFLEX ROOFING**  
by Dicor Products  
15-YEAR WARRANTY!

Fifth Wheels	D250RES	D256RKT	D259RLS	D263RLT	D283RLT	D286BHD	D291BHT	D294MBQ
UVW (Unloaded Vehicle Weight)*	7,300	8,860	7,340	8,510	8,810	8,480	9,600	10,160
Dry Hitch Weight*	1,430	1,440	1,140	1,440	1,310	1,580	1,520	1,620
Dry Axle Weight*	5,870	7,420	6,200	7,070	7,500	6,900	8,080	8,540
NCC (Net Carrying Capacity)	1,700	1,640	1,660	1,990	1,690	2,020	2,150	1,835
GVWR	9,000	10,500	9,000	10,500	10,500	10,500	11,750	11,995
Exterior Height w/ A/C	12' 1"	12' 1"	12' 1"	12' 1"	12' 1"	12' 0"	12' 1"	12' 1"
Exterior Width	96"	96"	96"	96"	96"	96"	96"	96"
Exterior Length**	29' 1"	33' 9"	29' 6"	30' 7"	32' 11"	33' 7"	37' 5"	38' 2"
Refrigerator (cu. feet)	8	8	8	8	8	8	8	8
Water Heater Cap. (gal. G/E w/ DSI)	6	6	6	6	6	6	6	6
Fresh Water Cap. (gal.) [Including Water Heater Capacity]	55	55	55	55	55	55	55	55
Waste Water Cap. (gal.)	53	53	53	53	53	53	106	53
Gray Water Cap. (gal.)	93	93	53	53	53	93	53	53
1/2 Bath Cap. (gal.)	0	0	0	N/A	0	0	53	N/A
LP Gas Cap. (lbs.)	60	60	60	60	60	60	60	60
Furnace BTUs (1,000s)	35	35	35	35	35	35	35	35
Tire Size	16"	16"	16"	16"	16"	16"	16"	16"
Awning	20'	14'	20'	14'	13'/10' 6" opt.	(2) 14'	13'/11' opt.	17'/11' opt.

\*This weight reflects the rolling average unit weight for each model. Your trailer weight will vary according to optional equipment.

\*\*Exterior length is measured from center of hitch pin to rear wall.



# DURANGO HALF-TON EXTERIOR FEATURES



**STANDARD FLIP-UP ENTRY STEP**  
solid footing, coming and going. Handy friction hinge and screenshot auto-door-close feature.



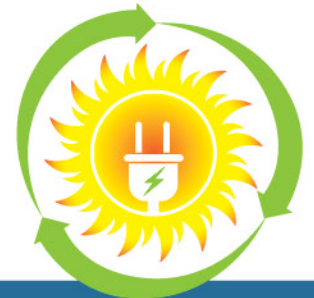
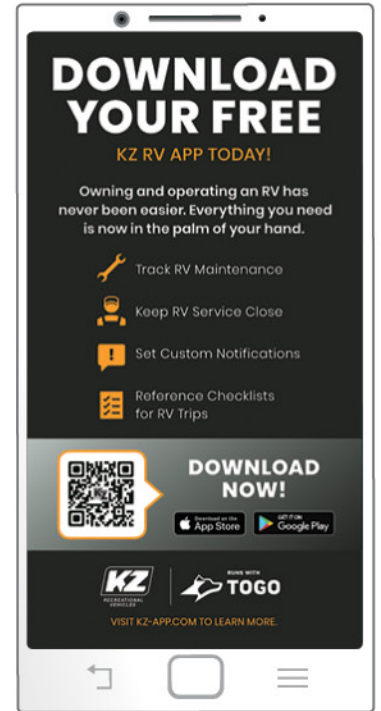
**CENTRALIZED COMMAND CENTER** heated & all systems conveniently located



**PASS-THROUGH STORAGE**  
features motion-lit technology (shown w/optional 32" exterior TV).



16" 6-lug heavy duty **ALUMINUM WHEELS** with E-range tires



Harness the power of the sun to run your TV and outlets. Roof mounted solar prep standard. **Optional "Off the Grid" solar package** includes 190W panel, 1200W inverter and interior control center.



**BACKUP CAMERA PREP**



**5/8" TONGUE & GROOVE PLYWOOD**



**BATTERY DISCONNECT**  
conveniently located



**Optional 4-POINT AUTO-LEVELING**  
does all the work



**FULLY VENTED ATTIC SYSTEM**  
Two attic vents are in each RV, providing vital escape routes for unwanted moisture that accumulates during use.





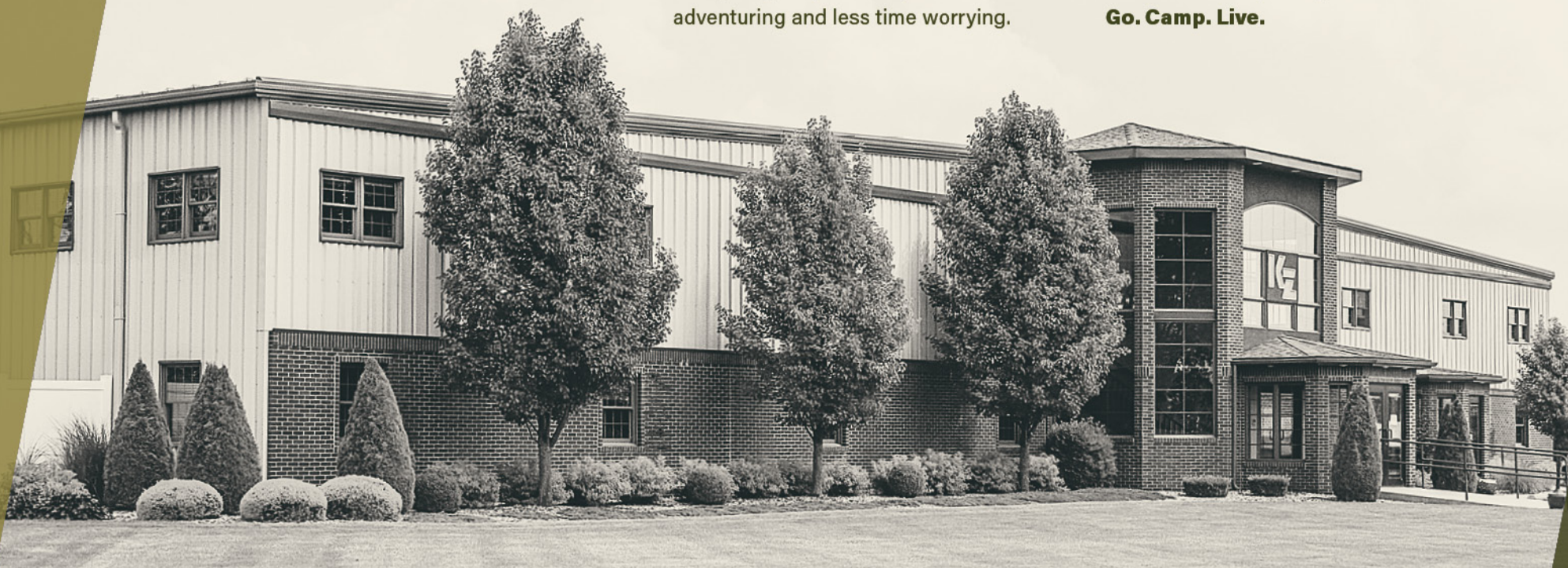
## RECREATIONAL VEHICLES

## HANDCRAFTED TO HIGH STANDARDS

In 1972, Sam King and Daryl Zook built a truck camper—and built a better way to camp. Since then we've built recreational vehicles with a focus on craftsmanship and quality, so you can spend more time adventuring and less time worrying.

When you hitch to a KZ Recreational Vehicle, you can expect adventure, good times, and old-world values. We care about your camping experience. Because your KZ is where the journey starts.

**Go. Camp. Live.**



The KZ **True 2 Warranty** is a **2-year hitch-to-bumper limited warranty** that's true to its name. The gold standard in RV protection, True 2 provides double the coverage of the industry norm. Plus, our warranty is backed by the craftsmanship and quality we're known for, so you can Go. Camp. Live. Wherever your adventure takes you, know that you're covered in your KZ.



Portions of this brochure were used with the expressed authority of Dexter Axle, but Dexter Axle is not responsible for the accuracy of the information contained herein.

Dealer:

