



RECREATIONAL  
VEHICLES

# DURANGO GOLD

FULLTIME LUXURY FIFTH WHEELS



## 2020 DÉCOR

HAVANA

SEA SALT

Luxury Fifth Wheels	G356RLT	G366FBT	G381REF	G382MBQ	G383RLT	G384RLT	G385FLF	G386FLF	G387FLF	G391RKQ
UVW (Unloaded Vehicle Weight)*	11,560	12,060	13,000	13,310	12,590	12,330	13,090	13,290	13,470	12,390
Dry Hitch Weight*	2,390	2,300	2,170	2,150	1,710	2,620	2,520	2,700	2,720	2,230
Dry Axle Weight*	9,170	9,760	10,830	11,160	9,880	9,710	10,570	10,590	10,750	10,160
NCC (Net Carrying Capacity)	3,435	2,935	3,000	2,690	3,410	3,870	3,110	2,910	2,730	3,610
GVWR	14,995	14,995	16,000	16,000	16,000	16,000	16,200	16,200	16,200	16,000
Interior Height	80"	80"	80"	80"	80"	80"	80"	80"	80"	80"
Exterior Height w/ A/C	13' 6"	13' 6"	13' 6"	13' 6"	13' 6"	13' 6"	13' 6"	13' 6"	13' 6"	13' 6"
Exterior Width	101"	101"	101"	101"	101"	101"	101"	101"	101"	101"
Exterior Length**	35' 6"	39' 10"	40' 6"	40' 4"	40' 3"	39' 10"	41' 10"	41' 11"	41' 11"	40' 11"
Refrigerator (cu. feet)	18	18	18	18	18	18	18	18	18	18
Water Heater Cap. (gal. G/E w/DSI)	12	12	12	12	12	12	12	12	12	12
Fresh Water Cap. (gal.) [Including Water Heater Capacity]	67	67	67	67	67	67	67	67	67	67
Waste Water Cap. (gal.)	53	53	53	53	53	53	53	53	53	53
Gray Water Cap. (gal.)	93	93	93	93	93	93	93	93	93	93
1/2 Bath Cap. (gal.)	N/A	53	N/A	N/A	40	N/A	53***	53	N/A	N/A
LP Gas Cap. (lbs.)	60	60	60	60	60	60	60	60	60	60
Furnace BTUs (1,000s)	35	35	35	35	35	35	35	35	35	35
Tire Size	16"	16"	16"	16"	16"	16"	16"	16"	16"	16"
Awning	16'/10' opt.	18'/11' opt.	16'	19'/11' opt.	14'/17' opt.	14'/17' opt.	18'	17'/13' opt.	17'/13' opt.	16'

\*This weight reflects the rolling average unit weight for each model. Your trailer weight will vary according to optional equipment.

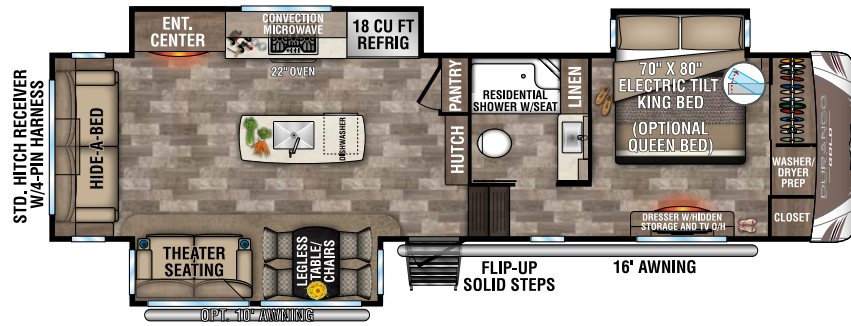
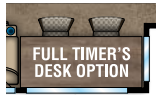
\*\*Exterior length is measured from center of hitch pin to rear wall.

\*\*\*Also includes kitchen

# 2020 DURANGO GOLD FIFTH WHEELS

G356RLT

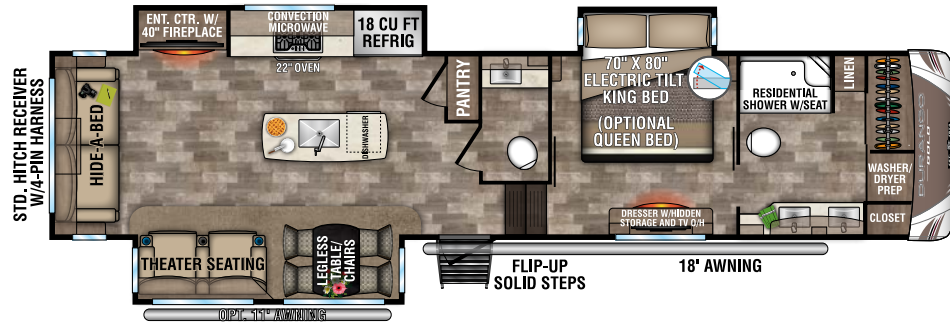
Option



G356RLT

G366FBT

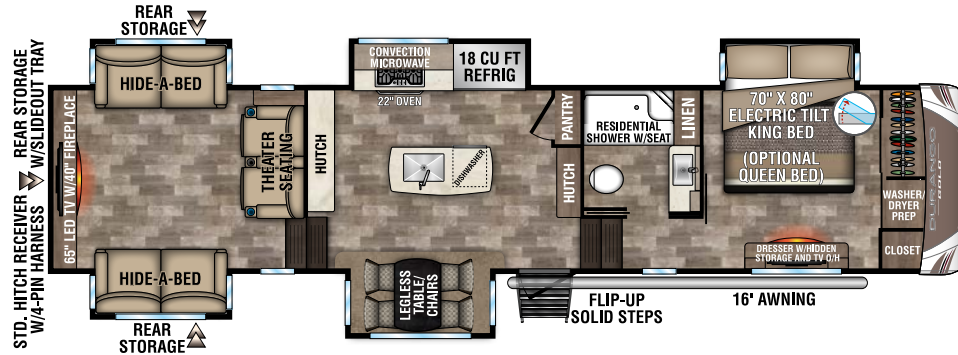
Option



G366FBT

G381REF

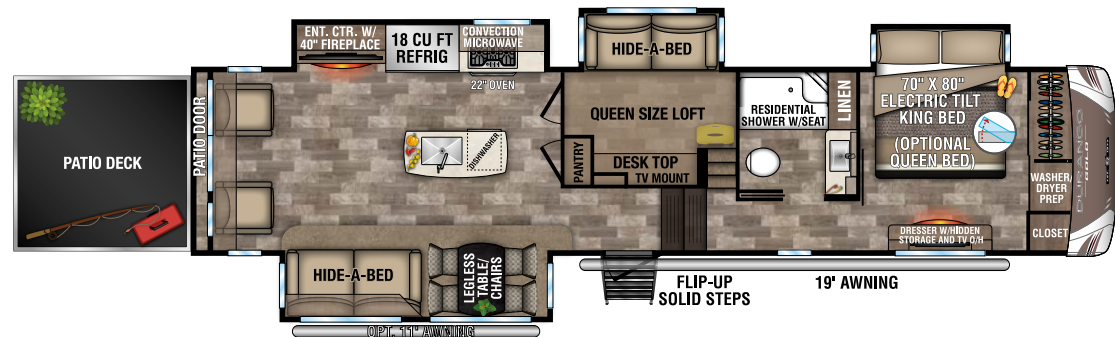
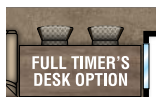
Option



G381REF **NEW**

G382MBQ

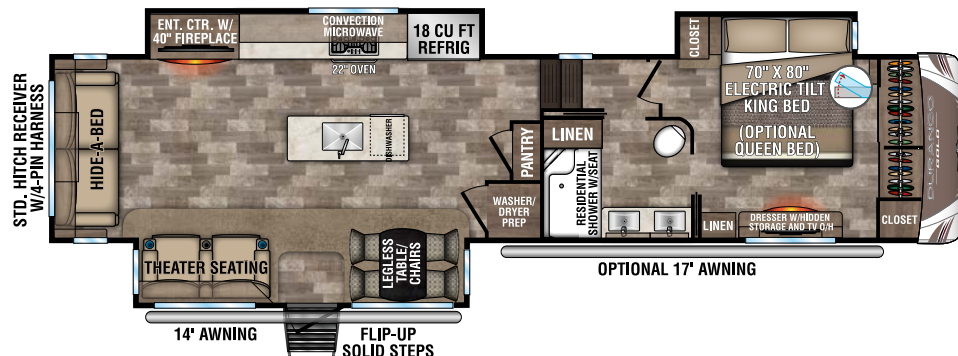
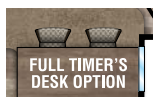
Option



G382MBQ

G383RLT

Option

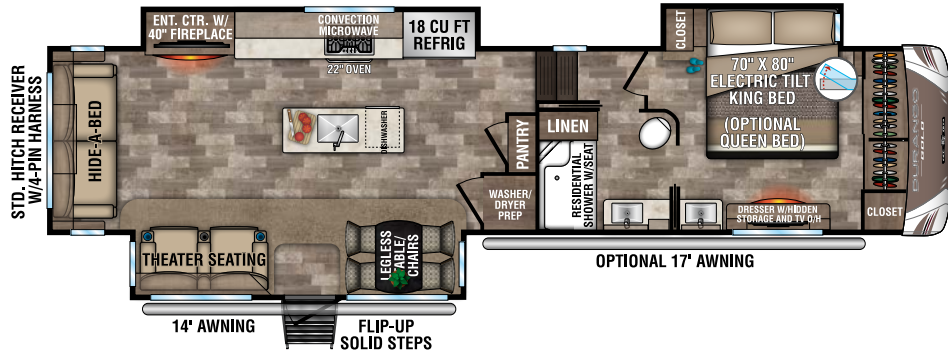


G383RLT **NEW**



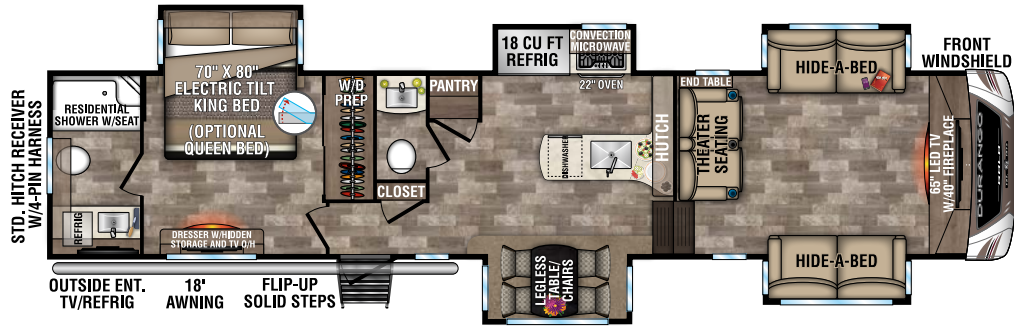
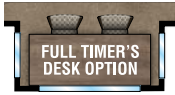
# 2020 DURANGO GOLD FIFTH WHEELS

G384RLT  
Option



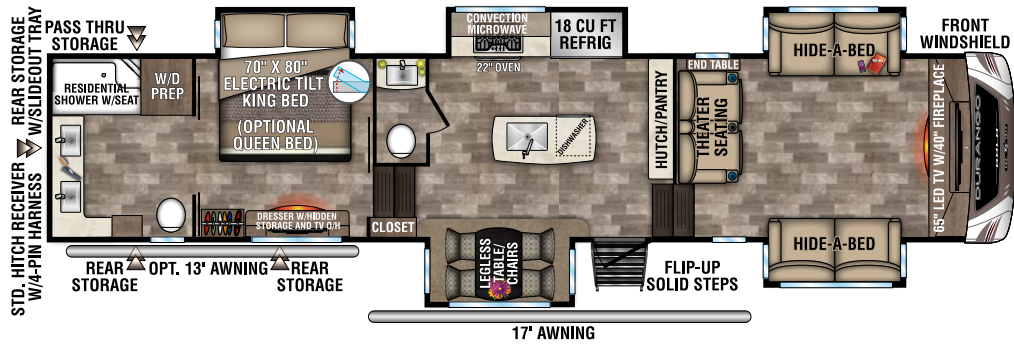
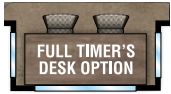
G384RLT

G385FLF  
Option



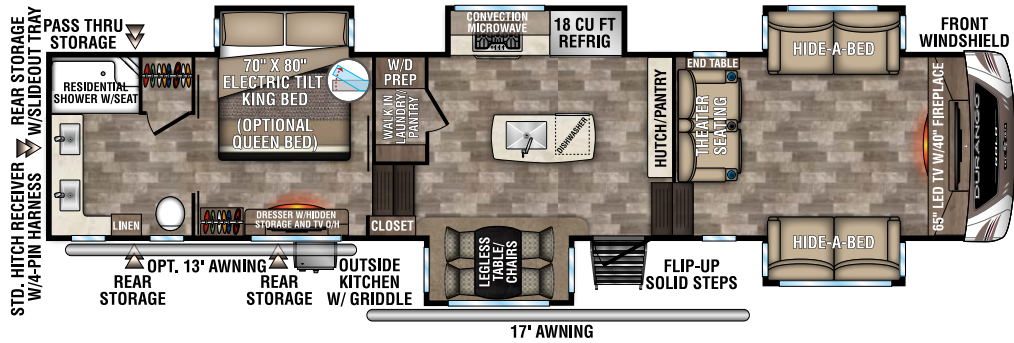
G385FLF

G386FLF  
Option

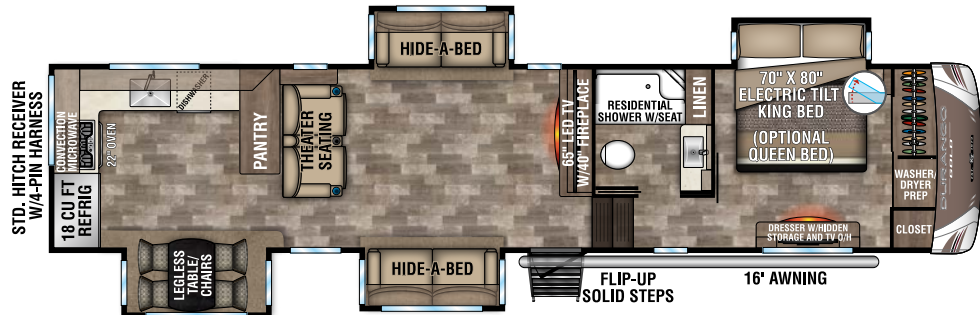


G386FLF **NEW**

G387FLF **NEW**



G391RKQ  
Option



G391RKQ **NEW**

# 2020 DURANGO GOLD FIFTH WHEELS

## CONSTRUCTION FEATURES

- 101" Wide-Body Construction
- Extra-Reinforced Heavy-Duty Front Fiberglass Cap
- Radius Front Cap (for increased turning radius on short bed trucks)
- 2" x 3" Welded Aluminum Fore & Aft Floor Joists
- 2" x 2" Welded Aluminum Sidewall Framing
- 5" Welded Aluminum Roof Trusses
- LCI® Hydraulic Slide System w/ Selector Valves
- Steel Powder Coated I-Beam w/Drop-Frame Pass-Thru Storage (offering 160-180 CU FT, F/P specific)
- Lamulux® High-Gloss Fiberglass
- All-Weather Insulation Package (roof, floor, ceiling, endcaps & tanks to R-38)
- R-11 2" Sidewalls (w/EGS metal backing strips to hold all int. cabinets)
- 1-Piece ABS Slideroom Bottoms; Slideroom Floors Insulated to R-24
- 1-Piece, Seamless, Walk-on, Tufflex Roofing Material w/15-Year Warranty
- 45 Degree Aluminum Roof Edge
- Fully-Vented Attic System
- 3/8" Roof Decking
- 5/8" Tongue & Groove, Screwed & Glued Plywood Floor Decking
- Full Drop-Frame Aluminum Skirt on Doorside
- Pex® In-Floor Heated Waterlines & Kitchen Gray Pipes (all waterlines & drainlines are located above all insulation)
- Fully-Heated & Enclosed Underbelly
- Double Insulated & Heated Holding Tanks (R-38 above & below tanks)

## EXTERIOR FEATURES

- 7,000 LB Dexter® Axles w/Self-Adjusting Brakes & Height Adjusting Hangers
- 8-Lug Heavy-Duty Aluminum Rims w/16" G-Range Radial Tires
- 100% Exterior LED Running Lights & Taillights
- Electric Awning w/Light Strip
- Propane Bottles on Same Side of Coach for Easy Access (2 x 30 LB each)
- Sealed Battery Storage Compartment on Side of Coach (no battery boxes required)

- Dual Front Baggage Doors
- Slam Latch Baggage Doors w/ Dual Locks
- Partially Painted Front Cap w/ LED Accent Lights
- Frameless Windows
- 3" x 14" In-Floor Straight Line Heating System w/35,000 BTU Furnace
- 12 GAL Gas/Electric Hot Water Heater
- LED Docking Light & Sewer Hookup Light
- Swing-Away Assist Grab Handle
- Underneath Spare Tire w/Hoist
- Roof Ladder
- Deluxe Heated Water Convenience Center (incl. black tank flush, power fresh tank water fill, winterizing system, outside shower & dry camping water siphon system)
- Fully-Finished, Heated & Sealed Basement Storage Compartment
- Pre-Wire for Exterior TV

## LIVING ROOM / KITCHEN FEATURES

- Residential-Size Pullout Trashcan in Kitchen
- Pullout Spice Rack (most models)
- Dual Pullout Pots & Pans Drawers under Refrigerator & Stove (where available)
- Removable Silverware Tray
- Storage Shelf under Kitchen Sink
- All Kitchen OH Cabinets have Shelf
- Heavy-Duty 100 LB Drawer Glides on Every Drawer
- Baltic Birch Drawer Boxes
- LED-Lighted Kitchen Cabinet Toe Kicks (most models)
- Large Dining Table w/Pullout Leaf, 2 Storage Seat Chairs & 2 Folding Chairs
- Kitchen Window (most models)
- Hidden Cabinet Door Hinges
- 5" Cabinet Hardware
- 3/8" Re-Bond Carpet Pad w/22 OZ Residential Carpet
- XL Toggle Light Switches
- Power Vent Fan in Second Bath (366FBT, 385FLF, 386FLF)
- All LED Ceiling & Cabinet Lights w/Multiple On/Off Switches

## BATHROOM / BEDROOM FEATURES

- Residential 1-Piece Fiberglass Shower Stall w/Built-In Seat & Glass Doors
- Shower Skylight
- XL Solid Surface Bath Vanity w/Stainless Steel Sink

- Porcelain Foot-Flush Toilet
- All LED Lights in Bed & Bath w/Multiple Switches
- Heavy-Duty 100 LB Drawer Glides on all Drawers
- Extra-Wide Bed & Bath Hallway (most models)
- Pocket Door from Hall to Bath (most models)
- Bath Towel Bar & Towel Loop (where applicable)
- 12V Fan
- XL Bath Linen Closet
- XL Deep Bedroom Walk-In Closet
- Dual Washer & Dryer Prep
- XL Under-Bed Storage
- Luxurious Bedspread & Pillow Shams

## OPTIONS (EXTERIOR)

- Dual Pane Windows (frameless)
- Wireless Backup Camera - Observation & Vision S
- "Off the Grid" Solar Package\*
- Flex-Air Pin Box
- 2nd LED Lighted Power Awning (G356RLT, G366FBT, G382MBQ, G384RLT)
- Generator Prep (includes start/stop harness)
- 6.5KW LP Onan Generator (requires prep)
- Slideout Cover Package (triple slides)
- Slideout Cover Package (quad slides)
- Slideout Cover Package (5 slides)
- Heat Pumps on Both A/Cs
- 3rd A/C Ducted (15,000 BTU)
- 32" Exterior TV w/Bracket

## OPTIONS (INTERIOR)

- House Residential Refrigerator w/1200W Inverter (18 CU FT) IPO 18 CU FT Gas/Electric Refrigerator (N/A CSA option)
  - Power Vent Fan in Bathroom
  - Queen Pillowtop Mattress 60" x 80" (Elec. Tilt)
  - Theater Seating IPO Hide-A-Bed (G382)
  - Full-Timer's Hardwood Desk IPO Dinette Table
  - Ottoman w/Storage
- \*Cannot get House Residential Refrigerator w/"Off the Grid" Solar Package*

## KZ ADVANTAGE PACKAGE (MANDATORY OPTION)

- EXTERIOR
- 6-Point Hydraulic Auto Leveling
- Polar White High Gloss Gelcoat Exterior Fiberglass
- Painted Fiberglass Front Cap
- 6-Sided Aluminum Framing

- Flip-Up Entry Steps (main entry)
- 50 AMP Service
- (2) 15K Ducted A/Cs w/Quiet Cool Ducting System
- 5/8" Tongue & Groove Plywood Floor
- Key-Alike for Baggage & Entry Doors
- Friction Hinge Entry Door w/ Shade Prep & Screenshot Features
- X-Large Folding Grab Handle
- Undermount Spare Tire
- Equa-Flex® Suspension
- Nitrogen-Filled Tires
- Battery Disconnect
- Black Tank Flush
- Backup Camera Prep
- Roof-Mounted Solar Prep w/ Connection
- All Weather Insulation Package (heated, insulated & enclosed underbelly plus foil in floor, roof, front, rear)
- 2" Towing Receiver Hitch w/4 Pin Wire Harness Connection (3,000 LB tow rating & 300 LB hitch rating)
- Roof Ladder
- Fully-Vented Attic System w/2 Attic Vents
- Leash Latch w/ Bonus Beverage Opener

## INTERIOR

- Maple Glazed Cabinetry
- Glazed Solid Hardwood Slideout Fascia
- Solid Surface Countertops w/ Deep Undermount Stainless Steel Kitchen Sink w/Sink Cover
- Chef's Appliance Package (2-piece SS gas cooktop w/ built-in oven & 30" convection microwave)
- Stainless Steel Dishwasher
- Custom Wine Rack in Pantry (most models)
- Central Vac System w/ Attachments
- Power Vent Fan in Main Area
- Theater Seating w/Powered Recline, Heat & Massage Features
- Tri-Fold Sleeper Sofa
- Solid Hardwood Dinette Table (legless) w/4 Chairs
- (3) Motion Sensor Lights (entry, closet, basement)
- 40" Wideview Fireplace
- 50" LED TV
- Multiple Media Stereo w/DVD/ Bluetooth & 3 Zone Speaker Controls
- (2) 6.5" Interior Speakers
- 12V Dual USB Charging Station
- Dual Day/Night Roller Shades
- Porcelain Foot-Flush Toilet

- Stainless Steel Bathroom Sink w/Waterfall Faucet
- Plywood Bed Base
- Electric Tilt King Bed 70" x 80"
- Bedroom Fireplace
- 32" Bedroom LED TV
- 7' Tall Main Slide Ceiling Height
- Pocket Door for Bathroom and Bedroom

## KZ CONVENIENCE PACKAGE (MANDATORY OPTION)

### EXTERIOR

- KZ Engage Powered by OneControl w/7" Screen (control system monitors tank levels & battery levels, controls sliderooms, leveling system, awnings, dimmable interior lighting, HVAC controls: includes Wi-Fi prep & connect anywhere prep for full function access by mobile device)
- Power Awning w/LED Light Strip
- 16" G-Range Tires w/Aluminum Wheels
- Magnetic Catches for Baggage Doors
- Omnidirectional HDTV Antenna w/Wi-Fi Prep
- LED Lights in Exterior Speakers

### INTERIOR

- Residential-Grade Linoleum
- 18 CU FT Gas/Electric Refrigerator w/Temperature Controls
- Matte Black Residential Kitchen Faucet w/Spring Sprayer
- Surfex Wood Step in FW Hallway
- Wood Accent Trim on Corners/ Entry Doors
- Vision S Prep (blind spot monitoring)

## BONUS FEATURES

- 2-Year Limited Warranty (see flyer)
- Lightest high-profile, wide body, luxury fifth wheels in the industry (average weight is 12,000 LBS)
- KZ has received the Dealer Satisfaction Index Award for 19 years
- KZ's 48 years of stable, dedicated manufacturing experience, coupled with its predominantly Amish workforce, heritage and commitment to superb quality, allow us to produce the best value luxury fifth wheel available.



985 N 900 W SHIPSEWANA, IN 46565

E: KZ@KZ-RV.COM

WWW.KZ-RV.COM

Due to continual research and advances, manufacturer reserves the right to change specifications, design, price and equipment without notice, and assumes no responsibility for any error in this literature. Some items shown are not included as standard or optional equipment.

©2019 KZ | 1/22/20 | 20M