



RECREATIONAL
VEHICLES

CONNECT

LIGHTWEIGHT TRAVEL TRAILERS

STANDARDS

- 3/8" Fully Walk-On Roof Decking
- 1-Piece, Seamless, Walk-on, Tufflex Roofing Material w/15-Year Warranty
- UVA & UVB Resistant Gelcoat Lamilux® Exterior Fiberglass
- Protective Front Diamond Plate
- KZ Easy-Catch Baggage Door Systems
- LED Exterior Lighting
- Outside Entertainment Prep (EXT 110V & cable outlets)
- (4) Stabilizer Jacks
- (2) 20# LP Bottles w/Bottle Cover
- Satellite & Cable Hookups
- 30 AMP Service
- 13,500 BTU A/C
- Water Heater Bypass
- 3-Burner Range w/Oven
- High-Rise Faucet
- Rich Woodbridge Maple Cabinetry
- Hand-Crafted Mortise & Tenon Cabinet Doors
- Roller Ball Bearing Drawer Glides
- Linoleum Throughout
- LED Interior Lighting
- Nightshades
- Shower Surround
- Skylight over Tub
- Roof Vent in Bath
- High Thread Count Quilted Reversible King Bedspread
- Gas Struts on Bed Base

OPTIONS

- Roof Ladder
- Pillowtop Mattress
- Tri-Fold Hide-a-Bed Sofa (N/A C231RK)
- 50 AMP Service for 2nd A/C
- 15,000 A/C IPO 13,500 BTU

- Low Pro 13,500 A/C IPO 13,500 (C261RL & smaller)
- Low Pro 15,000 A/C IPO 13,500 (C261RL & smaller)
- 2nd A/C - 13.5K
- F/S Dinette Table & 4 Chairs IPO Dinette (N/A C231RK)
- Theater Seating w/Heat & Massage Features IPO Jackknife (N/A C313RL)
- Bumper Mount Grill
- MaxAir Vent Fan (bathroom only)
- Bedroom LED TV w/Inside/Outside TV Bracket
- Front & Rear Electric Stabilizer Jacks
- Trundle Bed IPO Dinette in Bunk Slide (C322BHK, C343BHK)
- 10 CU FT 12V Refrigerator IPO 8 CU FT Stainless Steel Gas/Electric Refrigerator
- Wireless Backup Camera System - Observation
- Radiant Technology Package (foil in floor, roof, front & rear)
- 30" Fireplace
- Ottoman w/Storage
- Bedroom Pillow Package
- Friction Hinged Entry Door w/ Shade Prep & Screenshot Features
- Power Front Jack
- Key-Alike Program for Baggage & Entry Doors
- Magnetic Catches for Baggage Doors
- Large Folding Grab Handle
- Exterior Speakers
- Spare Tire
- Solar Prep
- Backup Camera Prep
- Flip Down 71" Storage Rack
- Equa-Flex® Suspension
- Nitrogen Filled Tires
- Battery Disconnect Switch
- Climate Package (heated, insulated & enclosed underbelly)
- Leash Latch w/Bonus Beverage Opener

PLATINUM PACKAGE

- Fiberglass Front Cap
- Pillowtop Mattress
- Headboard

KZ ADVANTAGE PACKAGE

(MANDATORY OPTION)

EXTERIOR

- Color Infused Titanium Exterior Fiberglass
- Flip-Up Entry Step (main entry)

- Bright White LED Light Strip above Slideout Room (main LR only)
- Flush Floor Slideouts
- Wider Pocket/Passage Interior Doors
- Color Accented Shower Walls
- Bathroom Shelf w/Towel Hooks

KZ CONVENIENCE PACKAGE

(MANDATORY OPTION)

EXTERIOR

- Aluminum Wheels
- Power Awning w/LED Light Strip
- Omnidirectional HDTV Antenna w/ Wi-Fi Prep
- LED Lights in Exterior Speakers

INTERIOR

- Residential Grade Linoleum
- 8 CU FT Gas/Electric Refrigerator w/ Temperature Controls
- Stainless Steel Microwave
- Matte Black Residential Kitchen Faucet w/Spring Sprayer
- Interior Control Switches on O/H End Cabinet w/Convenience Center for Switches
- Accent Trim on Corners/Entry Doors
- Porcelain Toilet w/Foot Flush

2020 DÉCOR

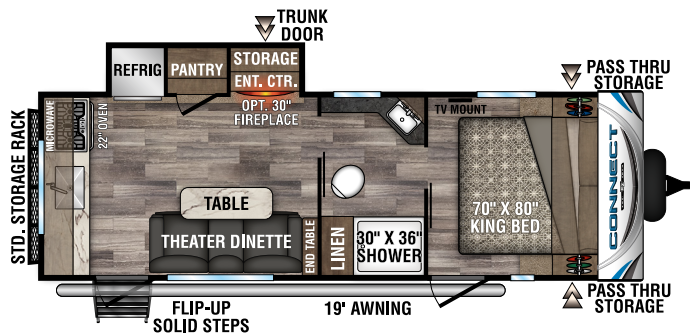
COFFEE

PEARL

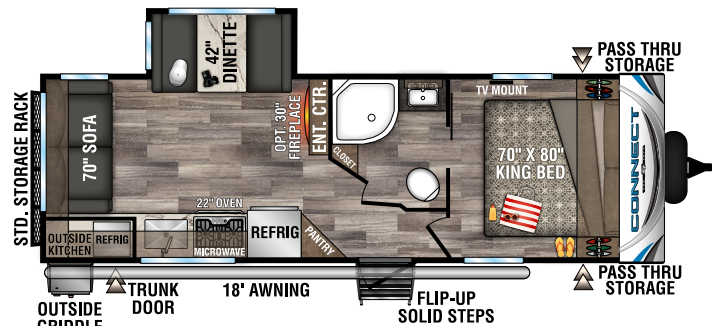
Lightweight Travel Trailers	C231RK	C241RLK	C251BHK	C261RB	C261RKK	C261RL	C271BHK	C272FK	C291BHK	C291RL	C302RIK	C313RL	C322BHK	C323RK	C332BHK	C343BHK
UVW (Unloaded Vehicle Weight)*	5,700	5,770	5,820	6,050	6,250	6,040	6,300	6,590	6,750	6,540	7,560	7,900	7,920	8,290	7,780	8,070
Dry Hitch Weight*	598	530	750	690	660	700	800	880	790	710	910	850	760	1,000	980	840
Dry Axle Weight*	5,102	5,240	5,070	5,360	5,590	5,330	5,500	5,710	5,960	5,830	6,650	7,050	7,160	7,290	6,800	7,230
NCC (Net Carrying Capacity)	1,599	1,495	1,555	1,295	1,080	1,315	1,100	2,650	2,445	2,615	1,695	1,750	1,640	1,510	2,000	1,570
GVWR	7,299	7,265	7,375	7,345	7,330	7,355	7,400	9,240	9,195	9,155	9,255	9,650	9,560	9,800	9,780	9,640
Interior Height	78"	78"	78"	78"	78"	78"	78"	78"	78"	78"	78"	78"	78"	78"	78"	78"
Exterior Height w/ A/C	10' 8"	10' 8"	10' 8"	10' 8"	10' 8"	10' 8"	10' 8"	10' 8"	10' 8"	10' 8"	10' 8"	10' 8"	10' 8"	10' 8"	10' 8"	10' 8"
Exterior Width	96"	96"	96"	96"	96"	96"	96"	96"	96"	96"	96"	96"	96"	96"	96"	96"
Exterior Length	28' 6"	29' 5"	29' 10"	30' 8"	31' 3"	31' 3"	32' 7"	30' 11"	34' 4"	34'	34' 4"	36' 11"	37' 10"	38' 5"	37' 6"	37' 7"
Refrigerator (cu. feet)	8	8	8	8	8	8	8	8	8	8	8	8	8	8	8	8
Water Heater Cap. (gal. G/E w/DSI)	6	6	6	6	6	6	6	6	6	6	6	6	6	6	6	6
Fresh Water Cap. (gal.)	40	40	40	40	40	40	40	45	40	40	40	40	40	40	40	40
Waste Water Cap. (gal.)	32	32	32	32	32	32	32	32	32	32	32	32	64	32	64	32
Gray Water Cap. (gal.)	64	32	64	64	64	32	64	64	64	32	64	32	32	64	64	32
LP Gas Cap. (lbs.)	40	40	40	40	40	40	40	40	40	40	40	40	40	40	40	40
Furnace BTUs (1,000s)	30	30	30	30	30	30	30	30	30	30	30	30	30	30	30	30
Tire Size	14"	14"	14"	14"	14"	14"	14"	15"	15"	15"	15"	15"	15"	15"	15"	15"
Awning	19'	18'	18'	19'	16'	20'	17'	18'	18'	20'	20'	15'	10' 11"	15'	18'	10' 11"

*This weight reflects the rolling average unit weight for each model. Your trailer weight will vary according to optional equipment.

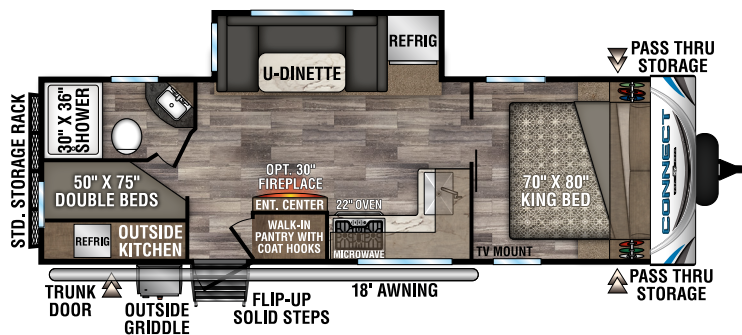
2020 CONNECT TRAVEL TRAILERS



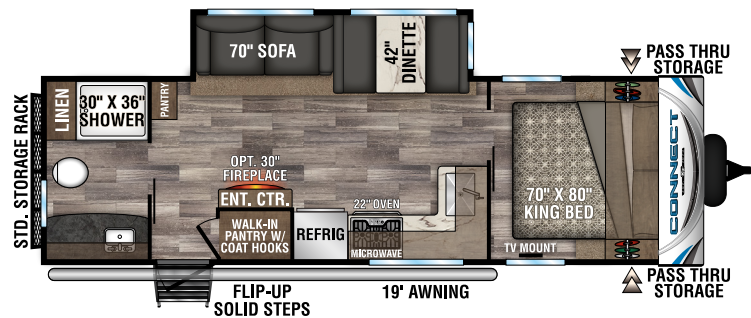
C231RK **NEW**



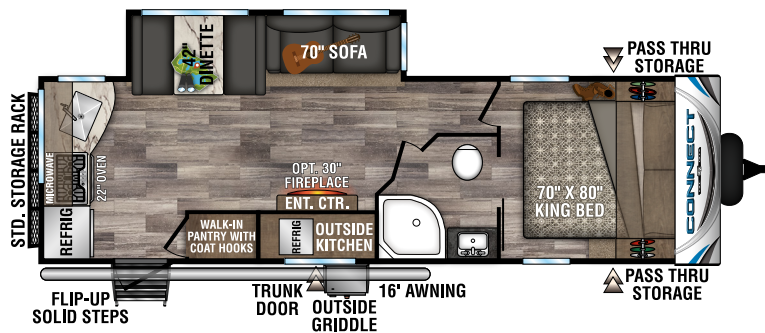
C241RLK



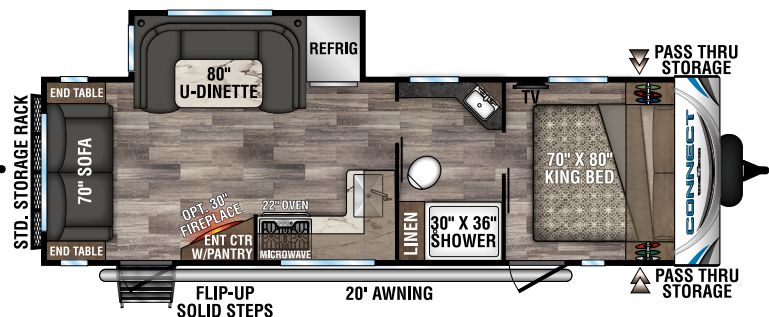
C251BHK **NEW**



C261RB



C261RKK



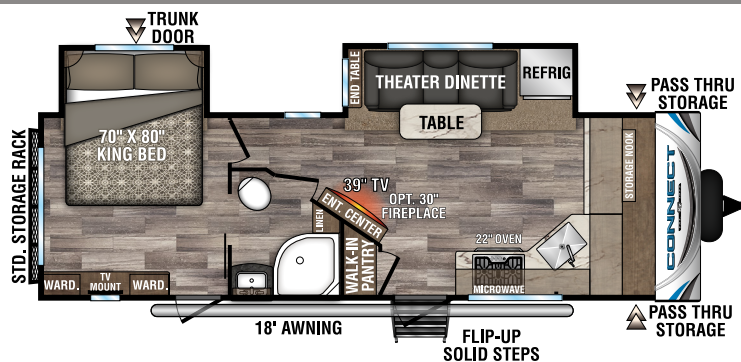
C261RL



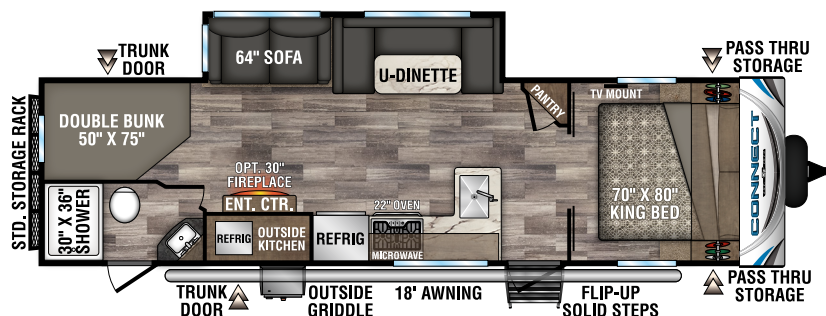
C271BHK

2020 CONNECT TRAVEL TRAILERS

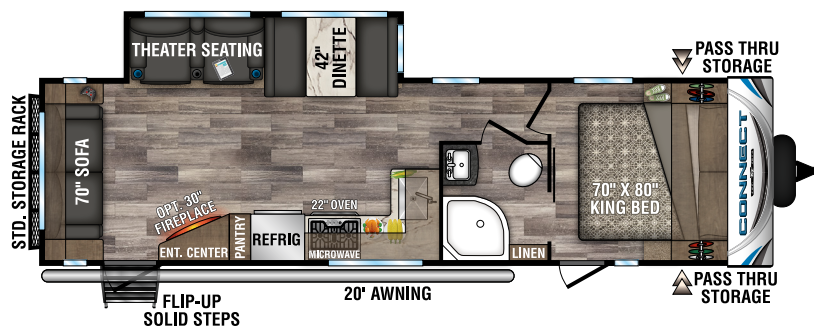
C272FK **NEW**



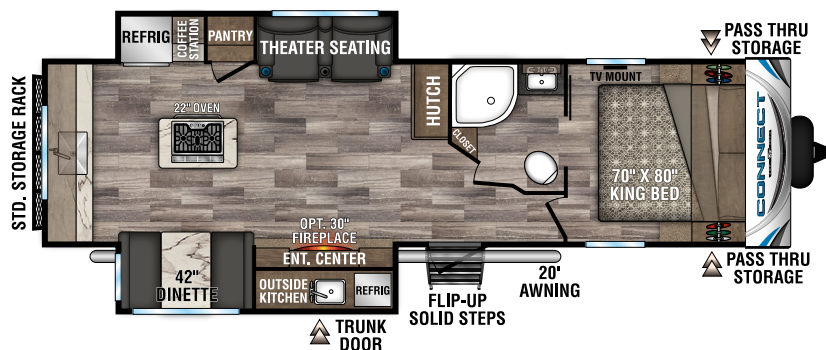
C291BHK **NEW**



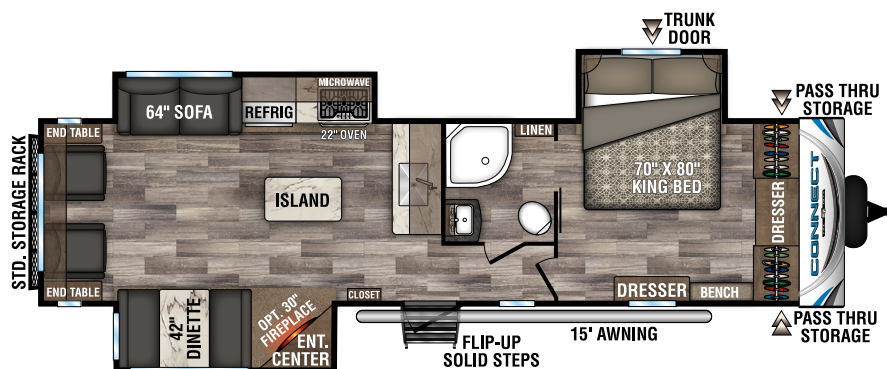
C291RL



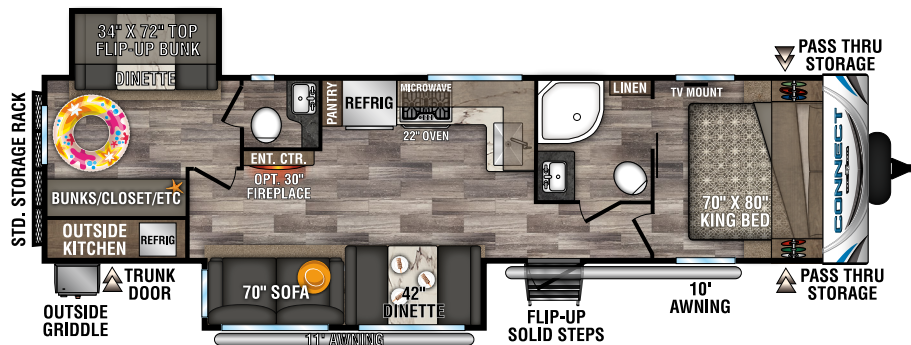
C302RIK **NEW**



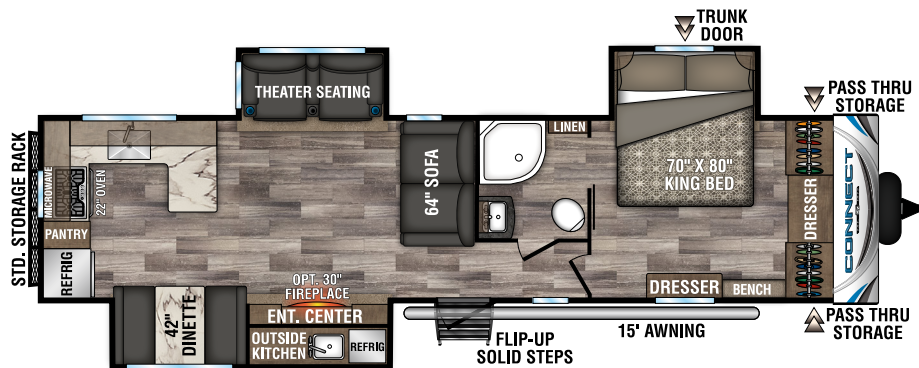
C313RL **NEW**



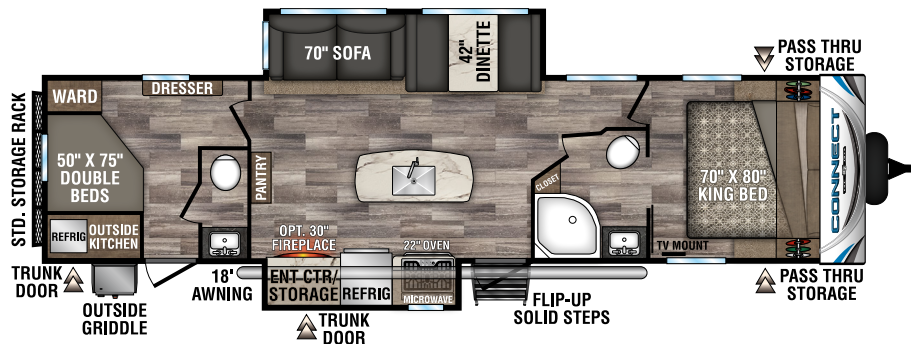
2020 CONNECT TRAVEL TRAILERS



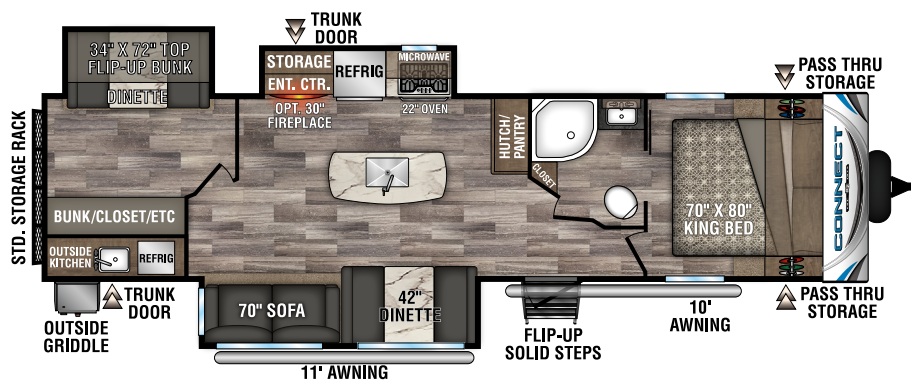
C322BHK



C323RK **NEW**



C332BHK



C343BHK **NEW**



985 N 900 W SHIPSEWANA, IN 46565

E: KZ@KZ-RV.COM

WWW.KZ-RV.COM

Due to continual research and advances, manufacturer reserves the right to change specifications, design, price and equipment without notice, and assumes no responsibility for any error in this literature. Some items shown are not included as standard or optional equipment.

©2019KZ | 12/4/19 | 20M