

# VENOM

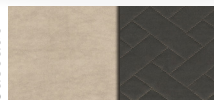
## V-SERIES

Fifth Wheel Toy Haulers

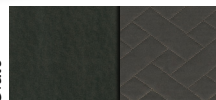


2019  
Décor

Cascade



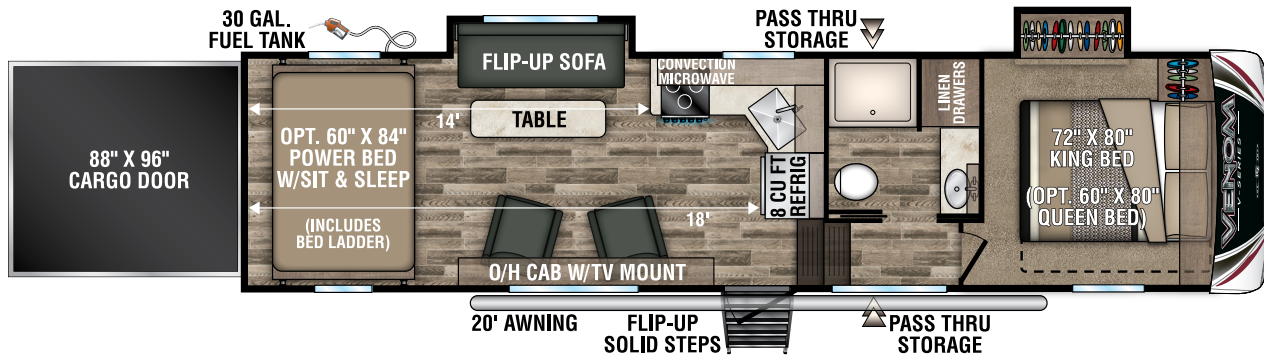
Slate



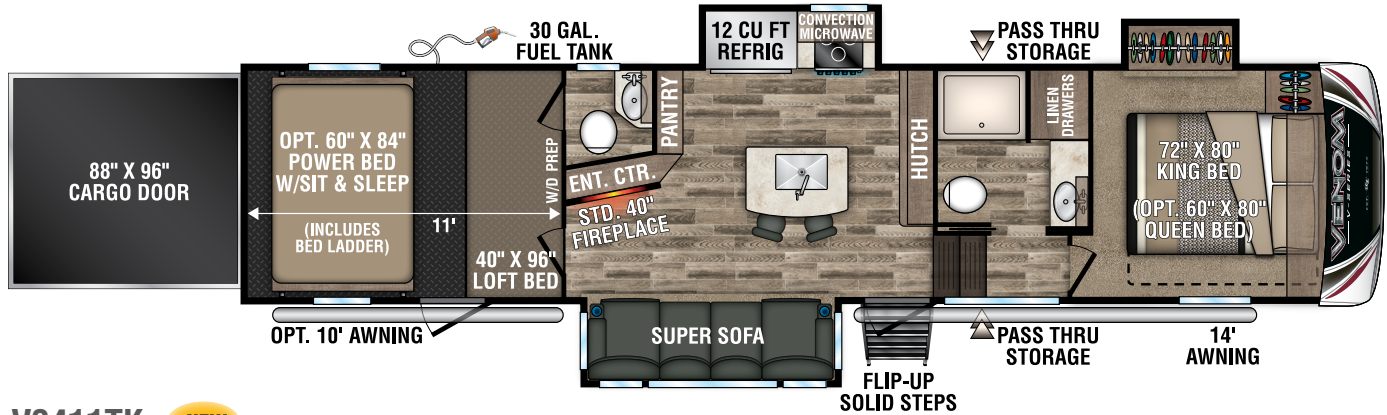
Fifth Wheels	V3214DK	V3411TK	V3413TK	V3517DK	V3815TK	V3916TK
UVW (Unloaded Vehicle Weight)*	10,470	12,200	12,310	10,780	13,360	13,340
Dry Hitch Weight*	2,780	2,450	2,580	2,640	2,290	2,730
Dry Axle Weight*	7,690	9,750	9,730	8,140	11,070	10,610
NCC (Net Carrying Capacity)	4,525	2,795	2,685	4,215	4,640	4,660
GVWR	14,995	14,995	14,995	14,995	18,000	18,000
Interior Height	102"	102"	102"	102"	102"	102"
Exterior Height w/ A/C	13' 4"	13' 4"	13' 4"	13' 4"	13' 4"	13' 4"
Exterior Width	101"	101"	101"	101"	101"	101"
Exterior Length**	34' 11"	38' 9"	40' 8"	37' 11"	42' 9"	43' 8"
Refrigerator (cu. feet)	8	12	12	8	12	12
Water Heater Cap. (gal. G/E w/DSI)	12	12	12	12	12	12
Fresh Water Cap. (gal.) [Including Water Heater Capacity]	116	116	116	116	116	116
Waste Water Cap. (gal.)	53	53	53	53	53	53
Gray Water Cap. (gal.)	53	53	53	53	53	53
1/2 Bath Cap. (gal.)	N/A	40	N/A	N/A	40	N/A
LP Gas Cap. (lbs.)	60	60	60	60	60	60
Furnace BTUs (1,000s)	35	35	35	35	35	35
Tire Size	16"	16"	16"	16"	16"	16"
Awning	20'	14'	14'	16'	14'	14'
Optional 2nd Awning	N/A	10'	12'	18'	14'	15'

\*This weight reflects the rolling average unit weight for each model. Your trailer weight will vary according to optional equipment.

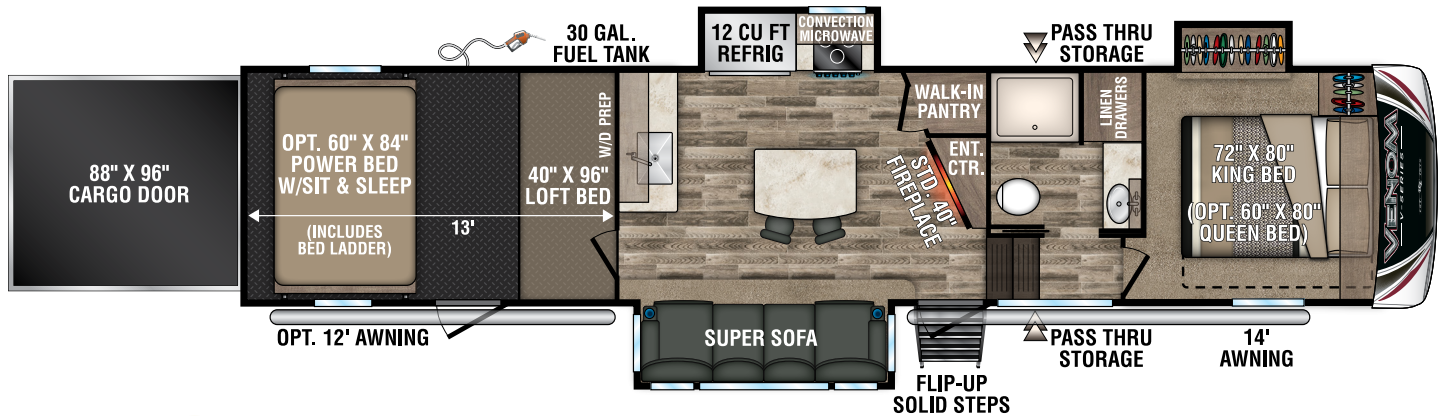
\*\*Exterior length is measured from center of hitch pin to rear wall.



**V3214DK** **NEW**

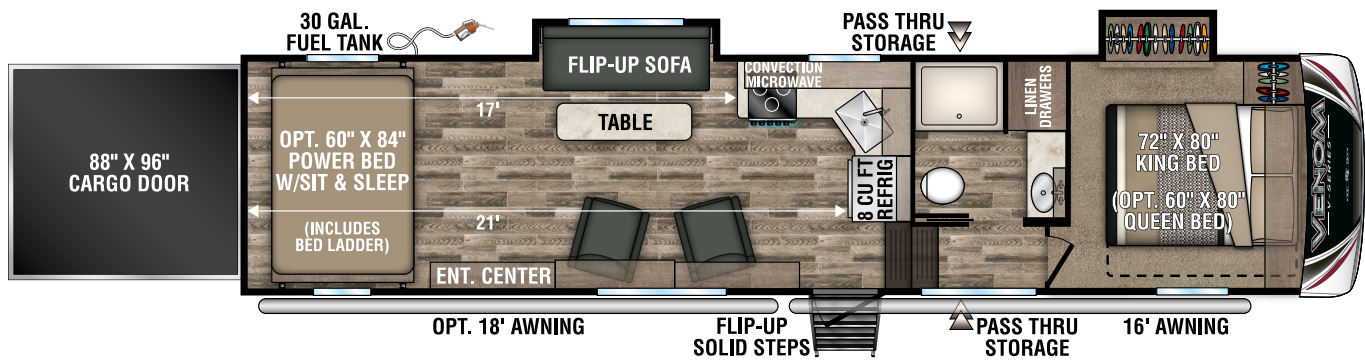


**V3411TK** **NEW**

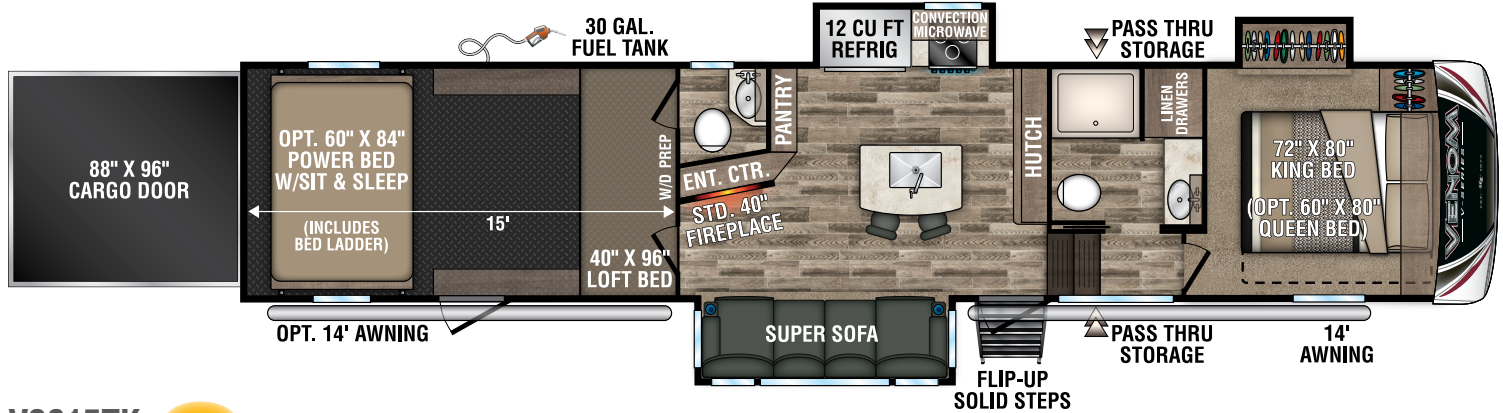


**V3413TK** **NEW**

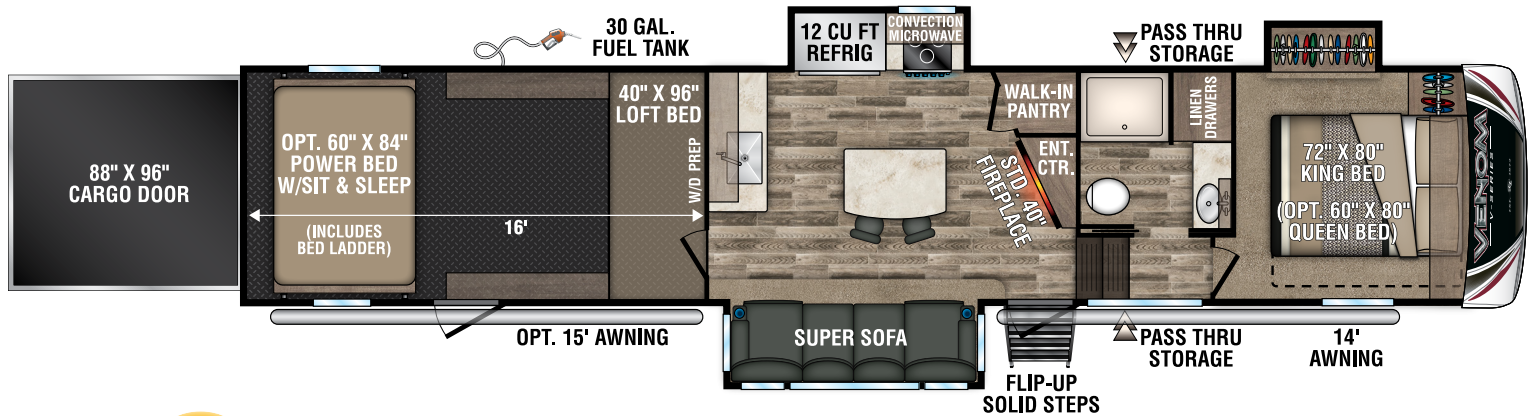




V3517DK **NEW**



V3815TK **NEW**



V3916TK **NEW**

## CONSTRUCTION FEATURES

- 101" Wide-Body Construction
- Extra-Reinforced, Heavy Duty, High-Gloss Front Cap
- Radius Aerodynamic Front Cap (provides better turning radius & increased fuel economy)
- 2" x 3" Fully Welded Aluminum Floor Joists
- 2" x 2" Fully Welded Aluminum Sidewall Framing
- Lamilux® Gelcoat Fiberglass
- Double-Insulated & Heated Holding Tanks (R-38 above & below tanks)
- R-11 2" Sidewalls (w/EGS metal backing strips to hold up all interior cabinets)
- Roof Membrane w/12-Year Limited Warranty
- Fully Vented Attic System
- 3/8" Roof Decking (fully walkable)
- 5/8" Tongue & Groove, Screwed & Glued Plywood Floor Deck
- Pex® In-Floor Heated Waterlines & Kitchen Gray Pipes (all waterlines & drains are located above all insulation)
- Fully-Enclosed & Heated Underbelly w/ Directly Heated Holding Tanks

## EXTERIOR FEATURES

- 7,000# Dexter® Axles w/Auto-Adjusting Brakes
- 8-Lug Heavy-Duty Aluminum Rims w/16" G-Range Nitro-Filled Radial Tires
- 100% Exterior LED Running Lights, Taillights & Backup Lights
- Electric Power Awning w/LED Lights
- Propane Bottles (2 x 30 LBS) on Same Side of Coach for Easy Access
- Side Slam Latch Baggage Doors (where applicable) w/Magnet Catches for Full Access to Storage
- 3" x 14" In-Floor Straight Line Heating System w/35,000 BTU Furnace
- 12 GAL Gas/Electric Hot Water Heater
- Ramp Door LED Lighting
- LED Docking Light & Sewer Hookup Light
- Dual Swing-Away Assist Grab Handle
- Underneath Spare Tire w/Hoist
- Roof Ladder
- Heated Water Convenience Center (includes black tank flush, power fresh tank water fill, winterizing system, outside shower)
- Fully-Finished, Heated & Sealed Basement Storage Compartment (only available w/All-Weather Insulation PKG)
- Heated & Enclosed Dump Valves
- Satellite Pre-Wire in Both the Convenience Center & Roof
- LED Lighted Outside Speakers
- LP Quick Connect

## LIVING ROOM/KITCHEN FEATURES

- Built-In Silverware Drawer
- Storage Shelf under Kitchen Sink
- All Kitchen OH Cabinets have Shelf & Extra-Tall Slide Lips
- Heavy-Duty 100# Drawer Glides on Every Drawer
- Baltic Birch Drawer Boxes
- Decorative Lighting above Many Cabinets
- Window in Kitchen (in most models)
- 5" Stainless Steel Cabinet Hardware
- Window Roller Shades Throughout
- 3/8" Re-Bond Carpet Pad w/22 OZ Residential Carpet
- Stainless Steel Appliances
- Extra-Large Light Switches
- Ceiling Crown Molding
- 100% LED Ceiling & Cabinet Lights w/ Multiple On/Off Switches
- Deluxe Residential-Style Furniture
- Living Room HD Flat Panel TV on Bracket (includes exterior mount)

## GARAGE/RAMP AREA FEATURES

- Multiple D-Rings to Tie Down Cargo
- Built-In Dovetail
- Garage Entry Door (model specific)
- (2) Garage Ceiling Speakers

## BATHROOM/BEDROOM FEATURES

- Skylight Over Shower
- Porcelain Foot-Flush Toilet
- Extra-Wide Hall (going up into bedroom & pocket door from hall into the bathroom – most models)
- Towel Bar in Bathroom (where applicable)
- 12V Fan in Bathroom
- Extra-Large Under-Bed Storage
- Luxurious Bedspread
- Padded Headboard w/Hidden Storage

## OPTIONS (EXTERIOR)

- 3rd 15K BTU Ducted A/C w/Load Management System
- Dual Pane Windows (frameless)
- Wireless Backup Camera System - Observation
- "Off the Grid" Solar Package\*
- Roto Flex Rubberized Pin Box
- 2nd LED Lighted Power Awning
- Slideout Cover Package (double slides)
- Slideout Cover Package (triple slides)
- Party Patio Package (railing only)
- Three Season Patio Door IPO Screen Wall
- 5.5KW Gas Onan Generator

## OPTIONS (INTERIOR)

- 32" Bedroom LED TV
- Theater Seating w/Heat & Massage Features & 2-Person Table & Chairs IPO Super Sofa (3411TK, 3413TK, 3815TK, 3916TK)
- Residential Refrigerator w/1200W Inverter (18 CU FT) IPO 12 CU FT Gas/Electric Refrigerator (N/A CSA option) (N/A 3214, 3517)
- Power Vent Fan in Bathroom
- Power Vent Fan in Garage (N/A 3rd A/C option)
- Queen Black Label Pillowtop Mattress 60" x 80"
- Central Vac System
- Happi-Jac Power Bed w/Roll Over Sofas & Table

*\*Cannot get House Residential Refrigerator w/"Off the Grid" Solar Package*

## KZ ADVANTAGE PACKAGE (MANDATORY OPTION)

### EXTERIOR

- 6-Point Electric Auto Leveling
- Polar White Gelcoat Exterior Fiberglass
- Partial Painted Fiberglass Front Cap
- 6-Sided Aluminum Framing
- Flip-Up Entry Steps (main entry)
- 50 AMP Service
- (2) 15K Ducted A/Cs
- 5/8" T&G Plywood Floor
- Key-Alike for Baggage & Entry Doors
- Friction Hinge Entry Door
- Screenshot Feature on Entry Door
- Large Folding Grab Handle
- Undermount Spare Tire
- Equa-Flex® Suspension
- Nitrogen-Filled Tires
- Exterior Speakers
- Battery Disconnect
- Black Tank Flush
- Backup Camera Prep
- Roof Mounted Solar Prep
- All Weather Insulation Package (heated, insulated & enclosed underbelly plus foil in floor, roof, front, rear)
- Roof Ladder
- Fully Vented Attic System w/2 Attic Vents
- Toy Lok®
- Generator Prep w/30 Gal. Fuel Tank & Pump Station
- Retractable Screen Wall

### INTERIOR

- Maple Glazed Cabinetry
- Glazed Solid Hardwood Slideout Fascia
- Solid Surface Countertops w/Deep Undermount Stainless Steel Kitchen Sink w/Sink Cover

- Drop-In Cooktop w/Glass Cover & Oven
- 30" Convection Microwave
- Kitchen Skylight w/Shade
- Power Vent Fan in Main Area
- Super Sofa (select models)
- 3 Motion Sensor Lights (entry, closet, basement)
- 40" Wideview Fireplace
- LED TV
- Multiple Media Stereo w/DVD/Bluetooth/NFC Wireless Connectivity
- 12V Dual USB Charging Station
- Night Roller Shades
- Porcelain Foot-Flush Toilet
- Stainless Steel Oval Bathroom Sink
- Plywood Bed Base
- Upgraded King Black Label Pillowtop Mattress 72" x 80"
- 12 Gal. Gas/Electric Water Heater

## KZ CONVENIENCE PACKAGE (MANDATORY OPTION)

### EXTERIOR

- Power Awning w/LED Light Strip
- 16" Tires w/Aluminum Wheels
- Magnetic Catches for Baggage Doors
- Directional HDTV Antenna
- LED Lights in Exterior Speakers

### INTERIOR

- Residential Grade Linoleum
- 12 CU FT Gas/Electric Refrigerator w/ Temperature Controls (8 CU FT gas/electric refrigerator in 3214, 3517 only)
- Stainless Steel Residential Kitchen Faucet w/Pulldown Sprayer
- Surfex Wood Step in FW Hallway
- Dark Accent Trim on Corners/Entry Doors
- (2) Bar Stools (island models)

## BONUS FEATURES

- 2-year Limited Warranty (see flyer)
- One of the lightest weight high-profile, wide-body, luxury Toy Hauler fifth wheels in the industry
- KZ RV has won the coveted DSI award 18 years.
- KZ RV's 47 years of building experience, coupled with its stable and dedicated Amish workforce and commitment to superb quality, and low overhead, allows us to produce the lowest-priced fully-featured fifth wheel available.



985 N 900 W • Shipshewana, IN 46565  
E-mail [kz@kz-rv.com](mailto:kz@kz-rv.com) • [www.kz-rv.com](http://www.kz-rv.com)

*Due to continual research and advances, manufacturer reserves the right to change specifications, design, price and equipment without notice, and assumes no responsibility for any error in this literature. Some items shown are not included as standard or optional equipment. ©2018KZ | 12/10/18 | 25M*