

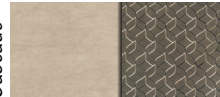
VENOM

Luxury Fifth Wheel Toy Haulers



**2019
Décor**

Cascade



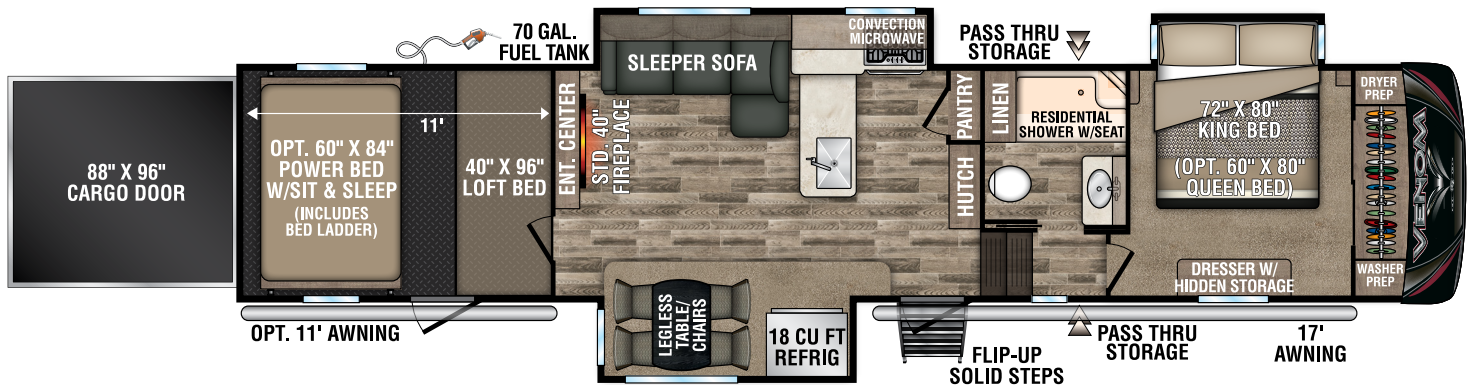
Slate



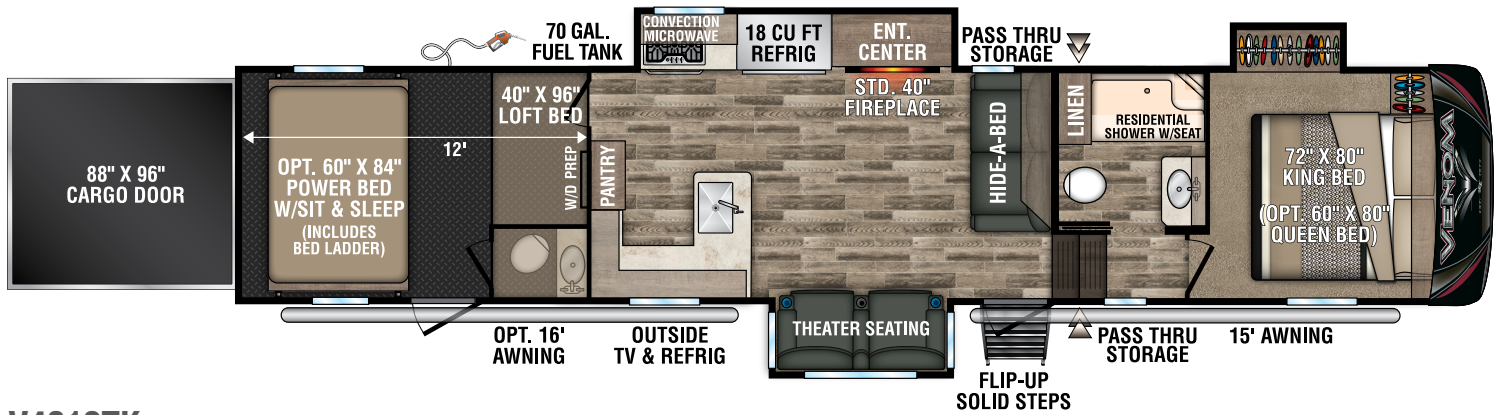
Fifth Wheels	V3911TK	V4012TK	V4013TK	V4114TK
UVW (Unloaded Vehicle Weight)*	14,050	15,310	15,100	14,400
Dry Hitch Weight*	3,070	3,190	3,100	3,130
Dry Axle Weight*	10,980	12,120	12,000	11,270
NCC (Net Carrying Capacity)	4,950	3,690	3,900	4,600
GVWR	19,000	19,000	19,000	19,000
Interior Height	102"	102"	102"	102"
Exterior Height w/ A/C	13' 4"	13' 4"	13' 4"	13' 4"
Exterior Width	101"	101"	101"	101"
Exterior Length**	42' 7"	43' 7"	43' 4"	43' 4"
Refrigerator (cu. feet)	18	18	18	18
Water Heater Cap. (gal. G/E w/DSI)	12	12	12	12
Fresh Water Cap. (gal.) [Including Water Heater Capacity]	112	112	112	112
Waste Water Cap. (gal.)	53	53	73	53
Gray Water Cap. (gal.)	93	93	93	93
1/2 Bath Cap. (gal.)	N/A	40	N/A	N/A
LP Gas Cap. (lbs.)	60	60	60	60
Furnace BTUs (1,000s)	35	35	35	35
Tire Size	16"	16"	16"	16"
Awning	17'	15'	17'	15'
Optional 2nd Awning	11'	16'	11'	15'

*This weight reflects the rolling average unit weight for each model. Your trailer weight will vary according to optional equipment.

**Exterior length is measured from center of hitch pin to rear wall.

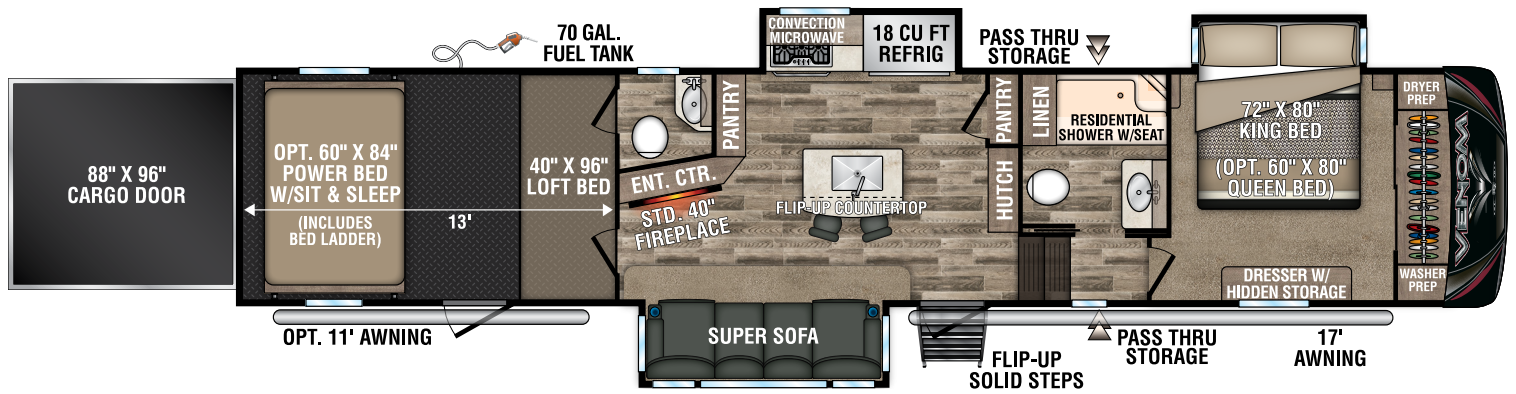


V3911TK

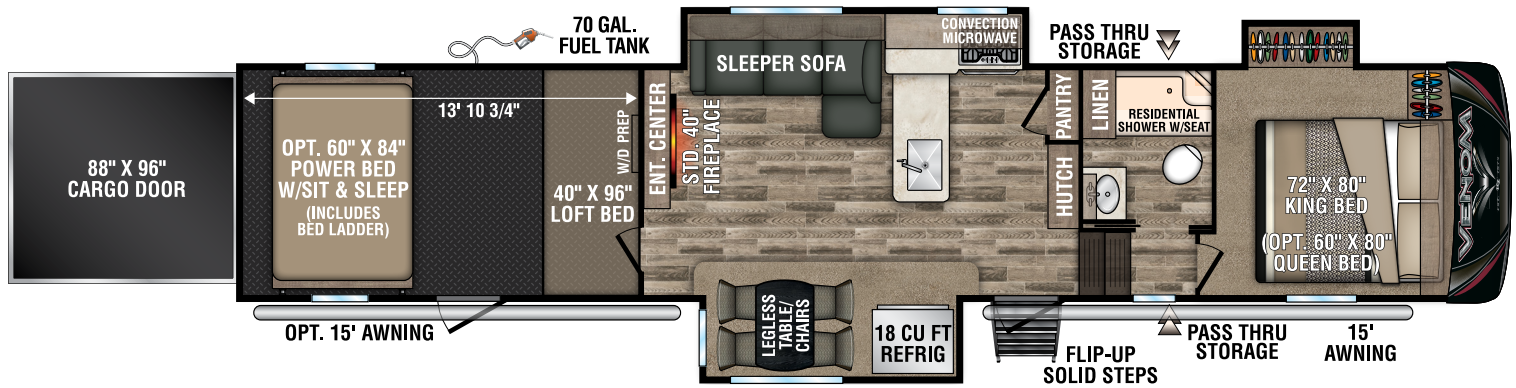


V4012TK





V4013TK



V4114TK



CONSTRUCTION STANDARDS

- 101" Wide-Body Construction
- 6-Sided aluminum frame, including welded aluminum fore & aft floor joists, sidewall framing, & roof trusses
- Extra Reinforced Heavy-Duty Front Fiberglass Cap
- Radius Aerodynamic Front Cap
- 2" x 3" Fully-Welded Aluminum Floor Framing
- 2" x 2" Fully-Welded Aluminum Sidewall Framing
- 5" Welded Aluminum Roof Trusses
- Lippert® Hydraulic Slide System w/ Selector Valves
- 12" Powder-Coated Steel I-Beam w/Drop Frame (160 SQ FT pass-thru storage)
- Lamilux 4,000® High-Gloss Fiberglass Sidewalls
- All Weather Insulation Package to R38 (roof, floor, garage floor end caps, holding tanks)
- Double Insulated & Heated Holding Tanks (R38 above & below tanks)
- Additional Outside Frame-to-Wall Floor Insulation
- R11 2" Sidewalls (w/EGS metal backing strips)
- One-Piece ABS Slideroom Bottoms
- Roof Membrane (TPO/rubber hybrid, limited 12-year warranty)
- 45-Degree Radius Aluminum Roof Edge
- Fully Vented Attic System
- 3/8" Fully Walk-On Roof Decking
- 5/8" Tongue & Groove Screwed & Glued Plywood Floor Decking
- Pex® In-Floor Heated Waterlines & Kitchen Gray Pipes (all waterlines & drains located above all insulation)
- Fully-Enclosed & Heated Underbelly w/ Direct-Heated Holding Tanks

EXTERIOR STANDARDS

- 7,000 LB Dexter® Axles w/Self Adjusting Brakes & Height Adjusting Hangers
- 8-Lug Heavy-Duty Aluminum Rims w/16" G-Range Radial Tires
- 100% Exterior LED Running & Taillights
- Propane Bottles (2 x 30 lbs.) on Same Side for Easy Access
- Sealed Battery Storage Compartment (no battery boxes required)
- Triple Front Slam-Latch Baggage Doors
- Side Slam-Latch Baggage Doors w/Dual Locks
- Fully Painted Front Cap w/LED Accent Lights
- Frameless Windows
- 35,000 BTU Furnace w/3" x 14" In-Floor Straight Line Heating System
- 12 GAL Gas/Electric Hot Water Heater
- Ramp Door w/LED Lighting
- LED Docking & Sewer Hookup Lights
- Sewer Hose Storage Tube
- Dual Swing-Away Assist Grab Handle
- Under-Frame Spare Tire w/Hoist
- Roof Ladder
- Heated Water Convenience Center (incl. black tank flush, power fresh tank water fill, winterizing system, outside shower, & dry-camping water siphon)

- Fully-Finished Heated & Sealed Basement Storage Compartment
- Camp Table & Patio Chairs Storage Compartment
- Heated & Enclosed Dump Valves
- Satellite Pre-Wire in Convenience Center & Roof
- LP Quick Connect

KITCHEN STANDARDS

- Large Dining Table w/Removable Leaf & 2 Heavy-Duty Chairs (2 additional folding chairs V3911TK, V4114TK)
- Power Vent Kitchen Fan w/Wall Controls (where applicable)
- Removable Silverware Tray
- Under-Sink Storage Shelf
- OH Cabinets incl. Shelf & Extra-Tall Slide Lips
- Hidden Cabinet Door Hinges
- 5" Stainless Steel Cabinet Hardware
- Baltic Birch Drawer Boxes
- Heavy-Duty 100 LB Drawer Glides
- LED Kitchen Cabinet Toe-Kicks (where applicable)
- Kitchen Window (most models)

INTERIOR STANDARDS

- 22 OZ Residential Carpet w/3/8" Re-bond Padding
- XL Ceiling Crown Molding
- 100% LED Ceiling & Cabinet Lights w/ Multiple On/Off Switches
- Extra-Large Light Switches
- Removable Pedestal Tables in Front of Seating (based on model)

BEDROOM STANDARDS

- XL Deep Closet w/Shoe Storage Rack (V3911TK, V4013TK)
- Dual Washer/Dryer Prep (stacked or side-by-side)
- XL Under-Bed Storage
- Luxurious Bedspread & Pillow Shams
- Flat Panel TV on Swing Arm

BATH STANDARDS

- Residential One-Piece FG Shower Stall w/ Glass Doors & Built-In Seat
- Shower Skylight
- XL Solid Surface Bath Vanity w/Stainless Steel Sink
- Porcelain Foot-Flush Toilet
- XL Linen Cabinet
- XL Deep Closet w/Shoe Storage Rack (V3911TK & V4013TK)
- Extra-Wide Hallway & Pocket Door
- Power Vent w/Wall Switch
- Towel Bar & Towel Ring

GARAGE STANDARDS

- Roll-Down Screen Wall
- E-Track Tie-Down System
- Built-In Dovetail
- 24" Diamond Plate Wall Guards
- Garage Entry Door
- HD Flat Panel Garage TV on Swing Arm
- (2) Garage Ceiling Speakers

- Zero Gravity Ramp Door w/Easy-Lift Assist

OPTIONS (EXTERIOR)

- Dual Pane Windows (frameless)
- Wireless Backup Camera System - Observation
- "Off the Grid" Solar Package*
- Flex-Air Pin Box
- 2nd LED Lighted Power Awning
- Slideout Cover Package (triple slides)
- Ramp Door Patio Package w/Step & Awning
- Three Season Patio Door IPO Screen Wall
- 5.5KW Gas Onan Generator

OPTIONS (INTERIOR)

- Theater Seating w/Heat & Massage Features & 2-Person Table & Chairs IPO Super Sofa (4013TK)
- Residential Refrigerator w/1200W Inverter (18 CU FT) IPO 12 CU FT Gas/Electric Refrigerator (N/A CSA option)
- Power Vent Fan in Bathroom
- Power Vent Fan in 1/2 Bath
- Denver Trek Queen Pillowtop Mattress 60" x 80"
- Happi-Jac Power Bed w/Roll Over Sofas & Table

**Cannot get Residential Refrigerator w/"Off the Grid" Solar Package*

KZ ADVANTAGE PACKAGE (MANDATORY OPTION)

EXTERIOR

- 6-Point Hydraulic Auto Leveling
- Polar White High Gloss Gelcoat Exterior Fiberglass
- Painted Fiberglass Front Cap
- 6-Sided Aluminum Framing
- Flip-Up Entry Steps (main entry)
- 50 AMP Service
- (3) 15K Ducted A/Cs w/Load Management System
- 5/8" T&G Plywood Floor
- Key-Alike for Baggage & Entry Doors
- Friction Hinge Entry Door
- Shade Prep & Screenshot Feature on Entry Door
- Large Folding Grab Handle
- Undermount Spare Tire
- Trail-Air Rota Flex Pin Box
- Equa-Flex® Suspension
- Nitrogen-Filled Tires
- Battery Disconnect
- Black Tank Flush
- Backup Camera Prep
- Roof Mounted Solar Prep
- All Weather Insulation Package (heated, insulated & enclosed underbelly plus foil in floor, roof, front, rear)
- Roof Ladder
- Fully Vented Attic System w/2 Attic Vents
- Toy Lok®
- Generator Prep w/Dedicated 30 Gal. Fuel Tank Plus 40 Gal. Fuel Tank & Pump Station
- Retractable Screen Wall

INTERIOR

- Maple Glazed Cabinetry
- Glazed Solid Hardwood Slideout Fascia
- Solid Surface Countertops w/Deep Undermount Stainless Steel Kitchen Sink w/Sink Cover
- Chef's Appliance Package (2-piece SS gas cooktop w/built-in oven & 30" convection microwave)
- Central Vac System w/Attachments
- Power Vent Fan in Main Area
- Super Sofa (select models)
- (3) Motion Sensor Lights (entry, closet, basement)
- 40" Wideview Fireplace
- LED TV
- Multiple Media Stereo w/DVD/Bluetooth
- JBL Performance Package (6 JBL speakers & sub)
- 12V Dual USB Charging Station
- Dual Day/Night Roller Shades
- Porcelain Foot-Flush Toilet
- Stainless Steel Oval Bathroom Sink
- Plywood Bed Base
- Denver Trek King Pillowtop Mattress 72" x 80"
- 32" Bedroom LED TV
- 12 GAL Gas/Electric Water Heater
- 32" LED TV in Garage Area

KZ CONVENIENCE PACKAGE (MANDATORY OPTION)

EXTERIOR

- 7" MyRV® One Touch Control Panel (monitors tank levels & battery levels, controls slide rooms, leveling system, awnings, inside/outside lighting)
- Power Awning w/LED Light Strip
- 16" G-Range Tires w/Aluminum Wheels
- Magnetic Catches for Baggage Doors
- Directional HDTV Antenna
- LED Lights in Exterior Speakers

INTERIOR

- Residential Grade Linoleum
- 18 CU FT Gas/Electric Refrigerator w/ Temperature Controls
- Stainless Steel Residential Kitchen Faucet w/Pulldown Sprayer
- Surfex Wood Step in FW Hallway
- Dark Accent Trim on Corners/Entry Doors

BONUS FEATURES

- 2-Year Limited Warranty (see flyer)
- One of the Lightest, High-Profile, Wide-Body, Luxury Toy Hauler Fifth Wheels in the Industry
- KZ has received the Dealer Satisfaction Index Award for 18 years
- KZ's 47 years of stable, dedicated manufacturing experience, coupled with its predominantly Amish workforce, heritage and commitment to superb quality, allow us to produce the lowest-priced luxury fifth wheel available.



985 N 900 W • Shipshewana, IN 46565
E-mail kz@kz-rv.com • www.kz-rv.com

Due to continual research and advances, manufacturer reserves the right to change specifications, design, price and equipment without notice, and assumes no responsibility for any error in this literature. Some items shown are not included as standard or optional equipment. ©2018KZ | 12/10/18 | 25M