

SPORTSTER

Travel Trailer & Fifth Wheel Toy Haulers

2019 Décor



Cashew

Walnut

Standards

- 102" Wide Body
- 3/8" Fully Walk-On Roof Decking
- 1-Piece Seamless Roof w/Roofing Material
- Radius Truss Rafters
- 90" Interior Wall Height (TTs)
- Awning w/Drip Rail & Spouts
- Cargo Tie-Down Rings
- Tuff Ply® in Enclosed Cargo Areas
- (2) 20# LP Bottles w/Cover TT
- (2) 30# LP Bottles w/Cover FW
- 30 AMP Service
- 13,500 BTU A/C
- (2) or (4) Stabilizer Jacks (F/P specific)
- Enclosed Pin Box on FWs
- Tinted Safety Glass Windows
- Self-Adjust Brakes
- Cable & Satellite Hookup
- Radius Entry Door
- Extra-Large, Smooth, Screwless Baggage Doors
- Outside Shower (F/P specific)
- LED Light in Pass-Thru Storage
- Winter Bypass Kit
- Linoleum Throughout
- Acrylic Sink w/High-Rise Faucet
- 3-Burner Cooktop
- Range Hood w/12V Light & Exhaust Fan
- Oven
- Microwave w/Turntable
- Large Overhead Cabinets
- Roller Ball Bearing Drawer Guides
- Super-Sized Panoramic Slideroom Window
- LED Interior Lighting
- Monitor Panel
- Digital TV Antenna w/Booster
- Flush-Floor Bedroom (FWs)
- Built-In Medicine Cabinet w/Mirror in Bathroom

- Queen Mattress

- Shower Surround
- Power Vent in Bathroom

Options

- Color-Infused Titanium Exterior Fiberglass (required)
- 15,000 BTU A/C IPO 13,500 BTU A/C
- 50 AMP Service w/2nd A/C Prep
- 2nd A/C (13,500 BTU)
- Bedroom LED TV w/Inside/Outside Bracket
- Radiant Technology Package (foil in floor, roof, front, rear)
- F/S Dinette Table & Chairs IPO Dinette
- Tri-Fold HAB Sofa IPO Jackknife (331TH, 363TH, 373TH)
- Theater Seating IPO Dinette (321THR, 311TH)
- Theater Seating IPO Jackknife (331TH, 363TH)
- 10 CU FT 12V Refrigerator IPO 8 CU FT Gas/Electric Refrigerator
- Front & Rear Electric Stabilizer Jacks (TTs)
- Electric Rear Stabilizer Jacks (FWs)
- 30" Fireplace (311TH, 331TH, 343TH, 373TH)
- Central Vac System (FWs only)
- 2nd Power Awning w/LED (343TH, 363TH, 373TH)
- MaxxAir Vent Fan (cargo &/or living room &/or bath) (required on TTs, 331TH)
- Roof Ladder
- Wireless Backup Camera System - Observation
- Patio Door (363TH12, 373TH12)
- Ramp Extension (N/A w/party patio package)
- Murphy Bed (321THR13)
- Sit-n-Sleep w/Power Bed & Ladder
- Party Patio Package (railing only)

- Generator Prep w/30 Gal. Fuel Tank & Pump Station (N/A w/murphy bed option)
- 4.0 Generator (requires generator prep & 30 AMP)
- 5.5 Generator (requires generator prep & 50 AMP)

KZ Advantage Package (mandatory option)

Exterior

- New Aerodynamic Front Profile (TTs)
- Flip-Up Entry Steps (main entry)
- 5/8" T&G Plywood Floor
- Key-Alike for Baggage & Entry Doors
- Friction Hinge Entry Door
- Large Folding Grab Handle
- Power Front Jack
- Spare Tire
- Equa-Flex® Suspension
- Nitrogen-Filled Tires
- Exterior Speakers
- Battery Disconnect Switch
- Black Tank Flush
- Toylok
- Backup Camera Prep
- Solar Prep
- Climate Package (heated, insulated & enclosed underbelly)

Interior

- Seamless Countertops w/Deep Undermount Stainless Steel Kitchen Sink
- Sink Cover
- Drop-In Cooktop w/Glass Cover & Oven
- Kitchen Skylight
- 36" Storage Bins in Booth Dinette
- Bright White LED Light Strip above Main LR Slide Room(s)
- Jackknife w/Middle Console & Bolster Arms

- (2) Motion Sensor Lights
- LED TV
- Multiple Media Stereo w/ DVD/Bluetooth/NFC Wireless Connectivity
- (2) 6.5" Interior Speakers
- 12V Dual USB Port
- Pleated Shades
- Foot-Flush Toilet
- Plywood Bed Base
- Pillowtop Mattress
- W/D Prep in Garage Models (FWs)
- Wider Pocket/Passage Interior Doors

KZ Convenience Package (mandatory option)

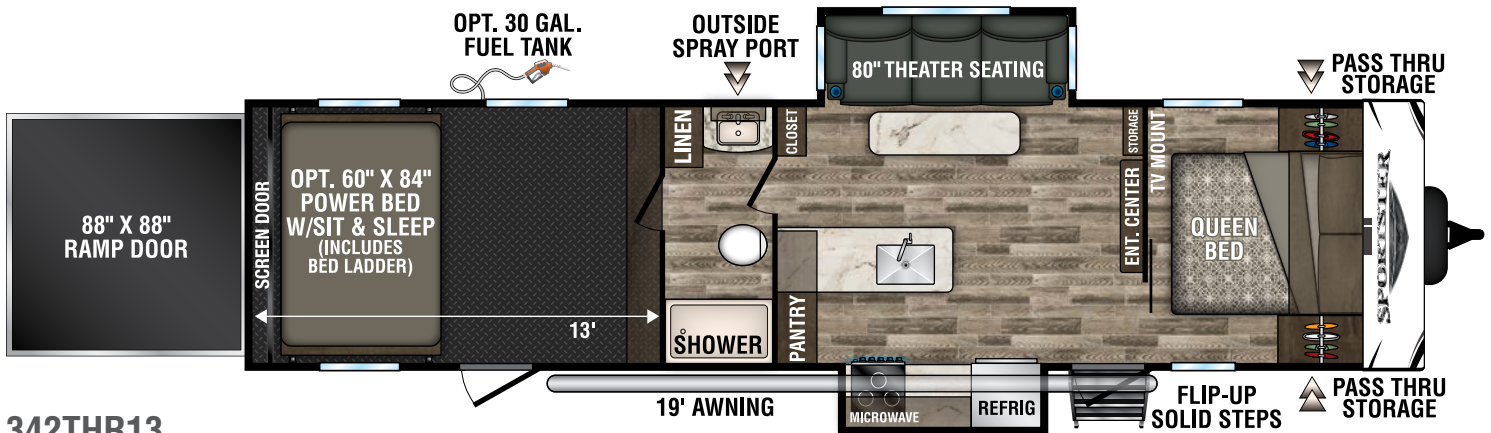
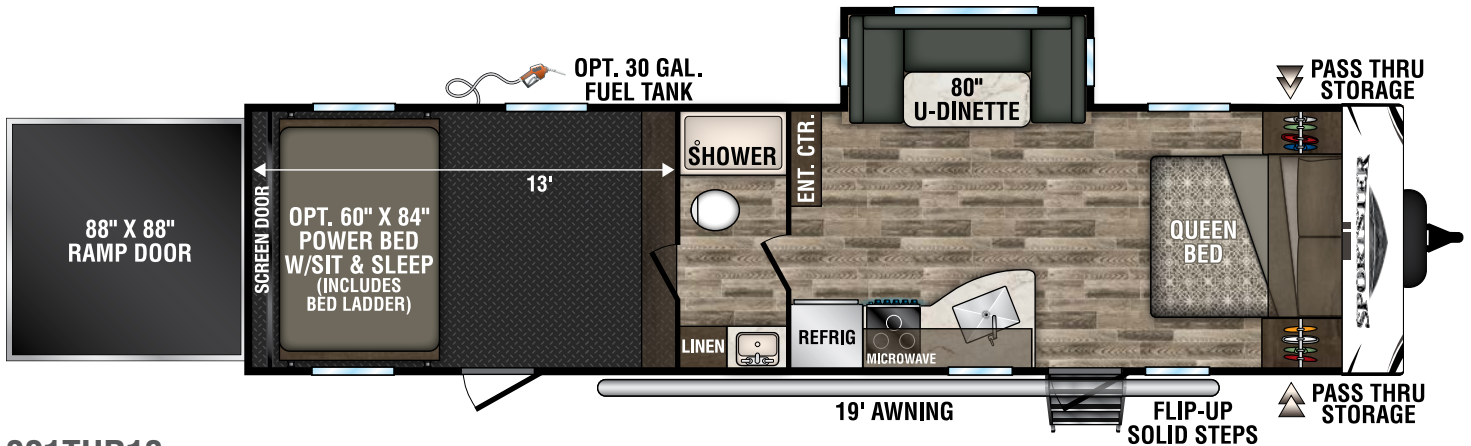
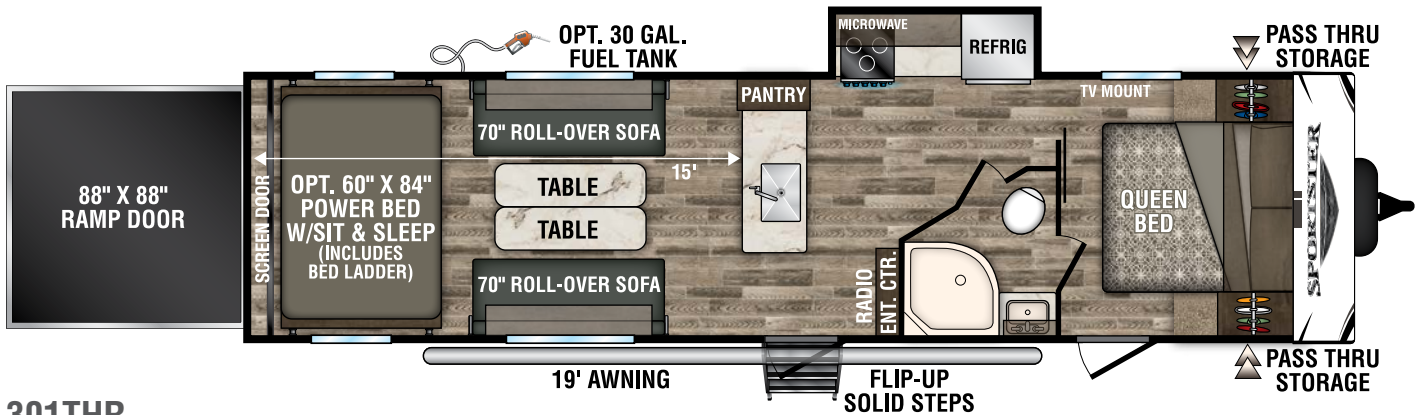
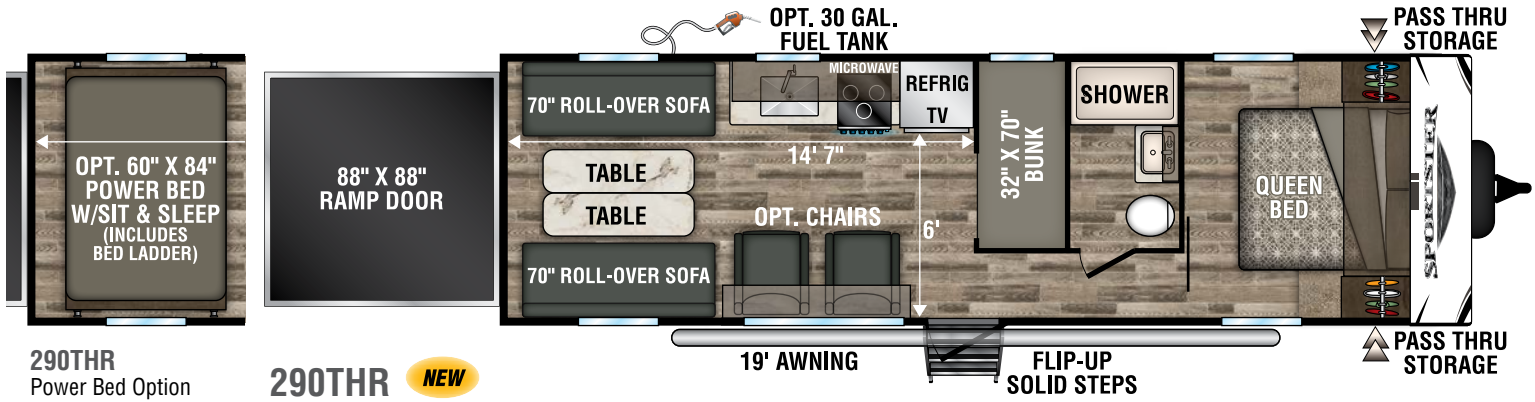
Exterior

- 102" Wide Exterior
- Power Awning w/LED Light Strip
- Aluminum Wheels (TTs)
- 16" Tires w/Aluminum Wheels (FWs)
- 12" Diamond Plate on Sidewalls of Enclosed Garages
- Magnetic Catches for Baggage Doors
- Omnidirectional HDTV Antenna
- LED Lights in Exterior Speakers
- Dual Rear Ramp Lights

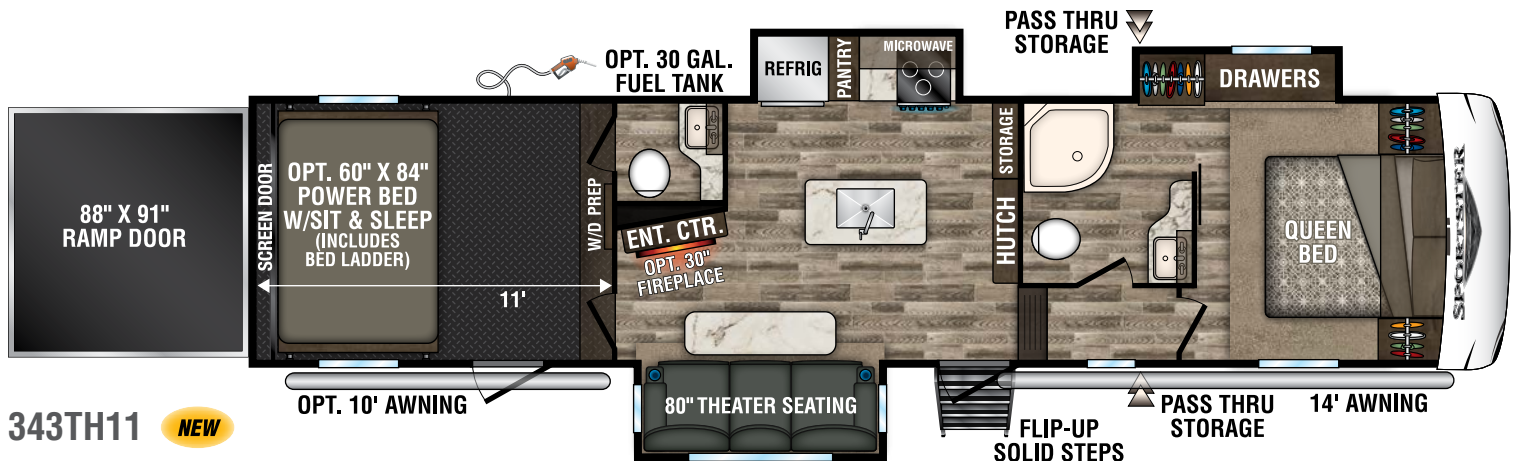
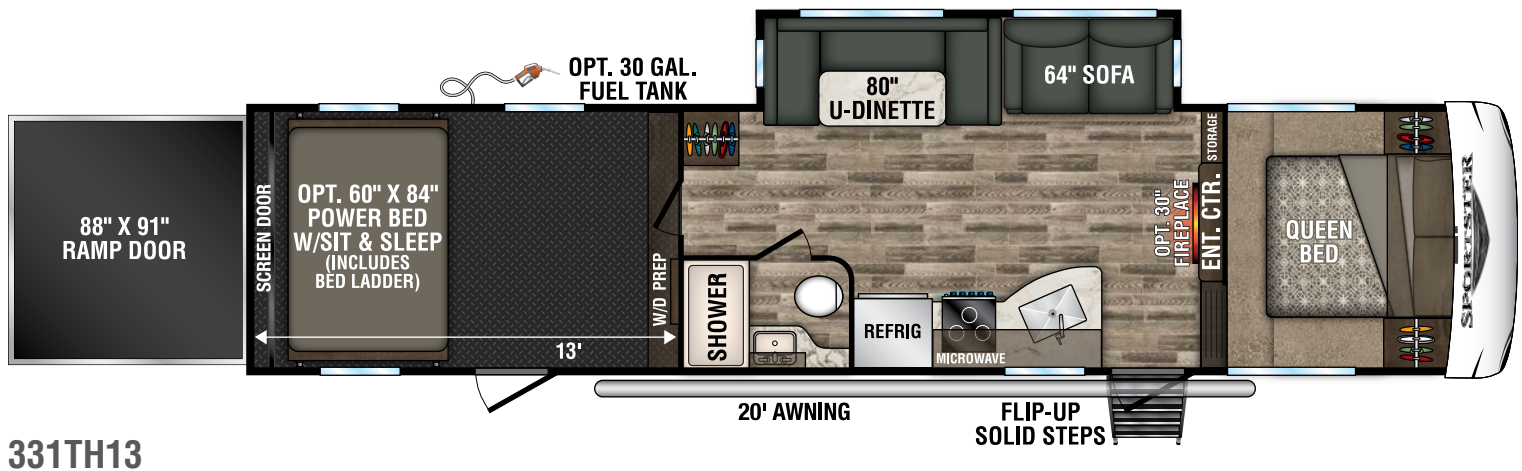
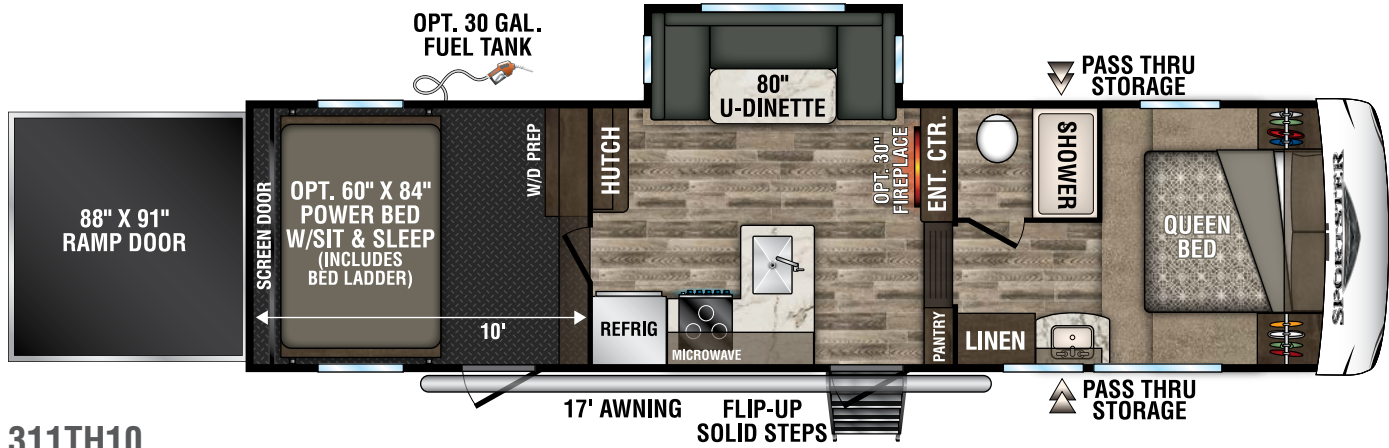
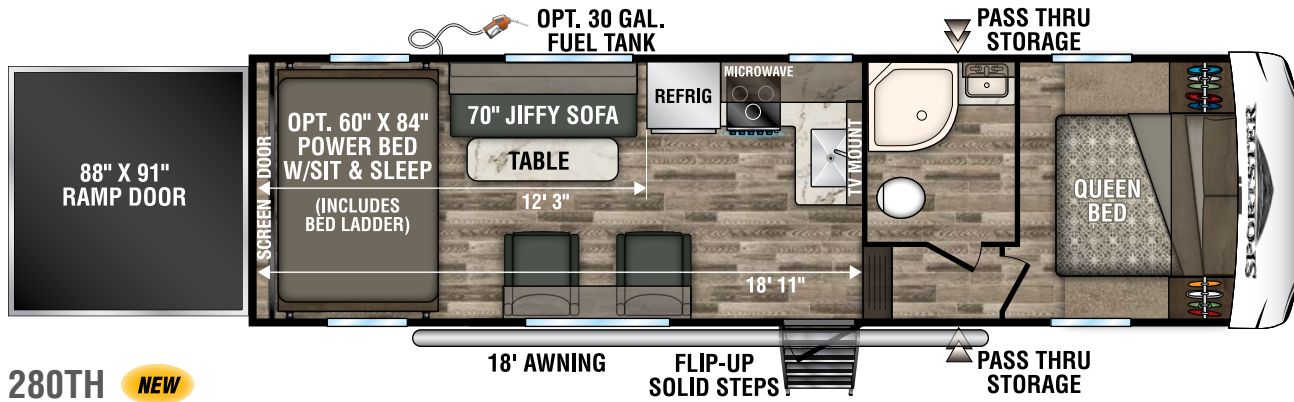
Interior

- Residential Grade Linoleum
- 8 CU FT Gas/Electric Refrigerator
- Stainless Steel Residential Kitchen Faucet w/Pulldown Sprayer
- Surfex® Wood Step in FW Hallway
- Interior Control Switches on OH End Cabinet
- Dark Accent Trim on Corners/Entry Doors
- Soft Snap Curtain in Garage Area
- Woodgrain Door to Garage Area
- Full-Width OH in Enclosed Garage Area

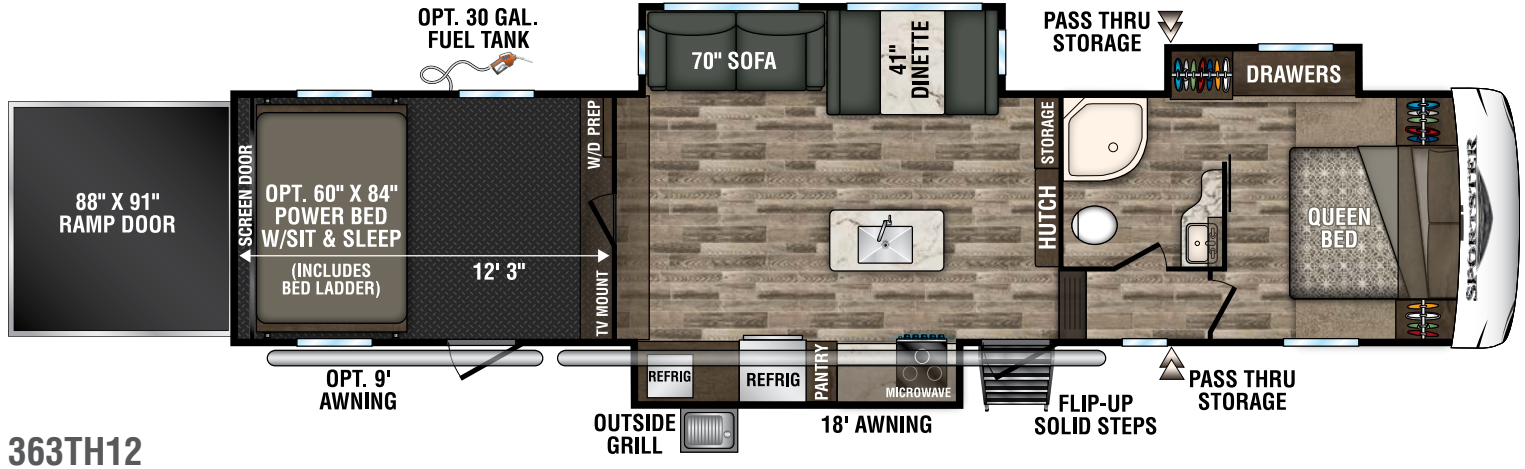
TRAVEL TRAILER TOY HAULERS



FIFTH WHEEL TOY HAULERS



FIFTH WHEEL TOY HAULERS



363TH12



373TH12

	TRAVEL TRAILERS				FIFTH WHEELS					
Toy Haulers	290THR	301THR	321THR13	342THR13	280TH	311TH10	331TH13	343TH11	363TH12	373TH12
UVW (Unloaded Vehicle Weight)*	6,640	7,560	7,880	9,020	7,910	8,800	9,105	10,260	11,310	11,200
Dry Hitch Weight*	870	1,230	1,140	1,540	1,330	1,360	2,020	2,220	2,040	2,075
Dry Axle Weight*	5,770	6,330	6,740	7,480	6,580	7,440	7,085	8,040	9,270	9,125
NCC (Net Carrying Capacity)	3,360	2,440	2,120	2,680	2,090	2,200	2,890	2,740	3,930	4,040
GVWR	10,000	10,000	10,000	11,700	10,000	11,000	11,995	13,000	15,240	15,240
Interior Height	90"	90"	90"	90"	92"	92"	92"	92"	92"	92"
Exterior Height w/ A/C	12' 3"	12' 3"	12' 3"	12' 3"	12' 3"	12' 3"	12' 5"	12' 7"	12' 7"	13' 3"
Exterior Width	102"	102"	102"	102"	102"	102"	102"	102"	102"	102"
Exterior Length**	31' 11"	34' 11"	37' 1"	38' 3"	31' 11"	34' 2"	38' 1"	38' 1"	41' 7"	41' 0"
Refrigerator (cu. feet)	8	8	8	8	8	8	8	8	8	8
Water Heater Cap. (gal. G/E w/DSI)	6	6	6	6	6	6	6	6	6	6
Fresh Water Cap. (gal.)	75	75	75	75	75	75	75	75	75	75
Waste Water Cap. (gal.)	32	32	32	32	57	57	32	57	57	57
Gray Water Cap. (gal.)	32	64	32	32	57	57	32	57	57	57
LP Gas Cap. (lbs.)	60	40	40	40	60	60	60	60	60	60
Furnace BTUs (1,000s)	30	30	30	30	30	30	30	30	30	30
Tire Size	15"	15"	15"	16"	16"	16"	16"	16"	16"	16"
Awning	19'	19'	19'	19'	18'	17'	20'	14'/10' opt.	18'/9' opt.	14'/11' opt.

*This weight reflects the rolling average unit weight for each model. Your trailer weight will vary according to optional equipment.

** Fifth Wheel exterior length is measured from the center of the hitch pin to the rear bumper.



985 N 900 W • Shipshewana, IN 46565
E-mail kz@kz-rv.com • www.kz-rv.com

Due to continual research and advances, manufacturer reserves the right to change specifications, design, price and equipment without notice, and assumes no responsibility for any error in this literature. Some items shown are not included as standard or optional equipment. ©2018KZ | 12/10/18 | 25M