

# SPORTSTER

travel trailer & fifth wheel toy haulers

# KZ

Est. 1972

**SPORTSTER**

travel trailer & fifth wheel toy haulers





# PLAY LIKE YOU MEAN IT

Whatever your passion, **SPORTSTER** 102-inch wide body toy haulers are ready for action, even including a standard Climate Package that extends the camping season. Choose from open-concept or garage floorplans, all with at least 90-inch interior height for taller toys.

Enjoy the residential kitchen and best-in-class entertainment features, or celebrate with friends with the optional Party Patio Package. There's never been a better time to get out there and enjoy the outdoors to its fullest!



## ⏪ SNACK & PACK ⏩

Upgraded 10-cubic-foot 12V refrigerator. Removable 36-inch bins can be packed in the house, then stowed away under the dinette. (321THR13 shown)



## MEALS FOR MILES ⏩

Large 80-inch U-dinette accommodates six comfortably, then converts to extra sleep space. Super-sized panoramic tinted safety glass slideroom windows. (321THR13 shown)

## FULL BATH ⏩

Vanity with mirrored medicine cabinet, floor-to-ceiling linen closet and power vent. (321THR13 shown)







## KITCHEN COMFORT

Slideout kitchen adds spaciousness, with island, hutch and open shelving. Seamless counters with stainless undermount sink, residential-grade linoleum, and Surflex® wood step.

DÉCOR



## THEATER SEATING

80-inch theater seats with heat, massage, LED accents and controls built into the cup holder. (343TH11 shown)



## FLEXIBLE FUNCTIONALITY

Entertainment center with LED TV and 30-inch fireplace. Garage converts to living space featuring optional power bed with Sit-and-Sleep, screen door, washer/dryer prep in fifth wheel garage floorplans, and optional second awning. (343TH11 shown)



## SNORE & STORE

Carpeted flush-floor master bedroom slideout featuring walk-around queen with mirrored his-and-hers full-length closets, four-drawer dresser and additional closet space with the wardrobe slide. (343TH11 shown)





**STANDARDS**

- 102" Wide Body
- 3/8" Fully Walk-On Roof Decking
- 1-Piece Seamless Roof w/ Roofing Material
- Radius Truss Rafters
- 90" Interior Wall Height (TTs)
- Awning w/Drip Rail & Spouts
- Cargo Tie-Down Rings
- Tuff Ply® in Enclosed Cargo Areas
- (2) 20# LP Bottles w/Cover TT
- (2) 30# LP Bottles w/Cover FW
- 30 AMP Service
- 13,500 BTU A/C
- (2) or (4) Stabilizer Jacks (F/P specific)
- Enclosed Pin Box on FWs
- Tinted Safety Glass Windows
- Self-Adjust Brakes
- Cable & Satellite Hookup
- Radius Entry Door
- Extra-Large, Smooth, Screwless Baggage Doors
- Outside Shower (F/P specific)
- LED Light in Pass-Thru Storage
- Winter Bypass Kit
- Linoleum Throughout
- Acrylic Sink w/High-Rise Faucet
- 3-Burner Cooktop
- Range Hood w/12V Light & Exhaust Fan

- Oven
- Microwave w/Turntable
- Large Overhead Cabinets
- Roller Ball Bearing Drawer Guides
- Super-Sized Panoramic Slideroom Window
- LED Interior Lighting
- Monitor Panel
- Digital TV Antenna w/Booster
- Flush-Floor Bedroom (F/Ws)
- Built-In Medicine Cabinet w/ Mirror in Bathroom
- Queen Mattress
- Shower Surround
- Power Vent in Bathroom

**OPTIONS**

- Color-Infused Titanium Exterior Fiberglass (required)
- 15,000 BTU A/C IPO 13,500 BTU A/C
- 50 AMP Service w/2nd A/C Prep
- 2nd A/C (13,500 BTU)
- Bedroom LED TV w/Inside/Outside Bracket
- Radiant Technology Package (foil in floor, roof, front, rear)
- F/S Dinette Table & Chairs IPO Dinette
- Tri-Fold HAB Sofa IPO Jackknife (331TH, 363TH, 373TH)
- Theater Seating IPO Dinette (321THR, 311TH)
- Theater Seating IPO Jackknife (331TH, 363TH)
- 10 CU FT 12V Refrigerator IPO 8 CU FT Gas/Electric Refrigerator
- Front & Rear Electric Stabilizer Jacks (TTs)
- Electric Rear Stabilizer Jacks (FWs)
- 30" Fireplace (311TH, 331TH, 343TH, 373TH)
- Central Vac System (FWs only)
- 2nd Power Awning w/LED (343TH, 363TH, 373TH)
- MaxxAir Vent Fan (cargo &/or living room &/or bath) (required on TTs, 331TH)
- Roof Ladder
- Wireless Backup Camera System - Observation
- Patio Door (363TH12, 373TH12)
- Ramp Extension (N/A w/ party patio package)
- Murphy Bed (321THR13)
- Sit-n-Sleep w/Power Bed & Ladder
- Party Patio Package (railing only)
- Generator Prep w/30 Gal. Fuel Tank & Pump Station (N/A w/murphy bed option)

- 4.0 Generator (requires generator prep & 30 AMP)
- 5.5 Generator (requires generator prep & 50 AMP)

**KZ ADVANTAGE PACKAGE (MANDATORY OPTION)****EXTERIOR**

- New Aerodynamic Front Profile (TTs)
- Flip-Up Entry Steps (main entry)
- 5/8" T&G Plywood Floor
- Key-Alike for Baggage & Entry Doors
- Friction Hinge Entry Door
- Large Folding Grab Handle
- Power Front Jack
- Spare Tire
- Equa-Flex® Suspension
- Nitrogen-Filled Tires
- Exterior Speakers
- Battery Disconnect Switch
- Black Tank Flush
- Toyllok
- Backup Camera Prep
- Solar Prep
- Climate Package (heated, insulated & enclosed underbelly)

**INTERIOR**

- Seamless Countertops w/ Deep Undermount Stainless Steel Kitchen Sink

- Sink Cover
- Drop-In Cooktop w/Glass Cover & Oven
- Kitchen Skylight
- 36" Storage Bins in Booth Dinette
- Bright White LED Light Strip above Main LR Slide Room(s)
- Jackknife w/Middle Console & Bolster Arms
- (2) Motion Sensor Lights
- LED TV
- Multiple Media Stereo w/ DVD/Bluetooth/NFC Wireless Connectivity
- (2) 6.5" Interior Speakers
- 12V Dual USB Port
- Pleated Shades
- Foot-Flush Toilet
- Plywood Bed Base
- Pillowtop Mattress
- W/D Prep in Garage Models (FWs)
- Wider Pocket/Passage Interior Doors

**KZ CONVENIENCE PACKAGE (MANDATORY OPTION)****EXTERIOR**

- 102" Wide Exterior
- Power Awning w/LED Light Strip
- Aluminum Wheels (TTs)

- 16" Tires w/Aluminum Wheels (FWs)
- 12" Diamond Plate on Sidewalls of Enclosed Garages
- Magnetic Catches for Baggage Doors
- Omnidirectional HDTV Antenna
- LED Lights in Exterior Speakers
- Dual Rear Ramp Lights

**INTERIOR**

- Residential Grade Linoleum
- 8 CU FT Gas/Electric Refrigerator
- Stainless Steel Residential Kitchen Faucet w/Pulldown Sprayer
- Surfex® Wood Step in FW Hallway
- Interior Control Switches on OH End Cabinet
- Dark Accent Trim on Corners/Entry Doors
- Soft Snap Curtain in Garage Area
- Woodgrain Door to Garage Area
- Full-Width OH in Enclosed Garage Area

**TRAVEL TRAILERS**

| Sportster Toy Haulers              | 290THR  | 301THR  | 321THR13 | 342THR13 |
|------------------------------------|---------|---------|----------|----------|
| UVW (Unloaded Vehicle Weight)*     | 6,640   | 7,560   | 7,880    | 9,020    |
| Dry Hitch Weight*                  | 870     | 1,230   | 1,140    | 1,540    |
| Dry Axle Weight*                   | 5,770   | 6,330   | 6,740    | 7,480    |
| NCC (Net Carrying Capacity)        | 3,360   | 2,440   | 2,120    | 2,680    |
| GVWR                               | 10,000  | 10,000  | 10,000   | 11,700   |
| Interior Height                    | 90"     | 90"     | 90"      | 90"      |
| Exterior Height w/ A/C             | 12' 3"  | 12' 3"  | 12' 3"   | 12' 3"   |
| Exterior Width                     | 102"    | 102"    | 102"     | 102"     |
| Exterior Length**                  | 31' 11" | 34' 11" | 37' 1"   | 38' 3"   |
| Refrigerator (cu. feet)            | 8       | 8       | 8        | 8        |
| Water Heater Cap. (gal. G/E w/DSI) | 6       | 6       | 6        | 6        |
| Fresh Water Cap. (gal.)            | 75      | 75      | 75       | 75       |
| Waste Water Cap. (gal.)            | 32      | 32      | 32       | 32       |
| Gray Water Cap. (gal.)             | 32      | 64      | 32       | 32       |
| LP Gas Cap. (lbs.)                 | 60      | 40      | 40       | 40       |
| Furnace BTUs (1,000s)              | 30      | 30      | 30       | 30       |
| Tire Size                          | 15"     | 15"     | 15"      | 16"      |
| Awning                             | 19'     | 19'     | 19'      | 19'      |

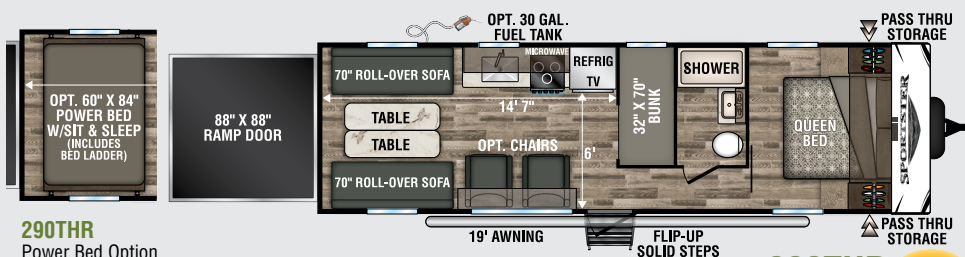
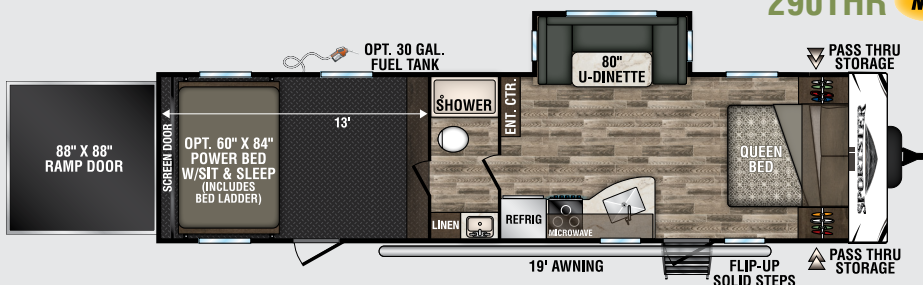
**FIFTH WHEELS**

| 280TH   | 311TH10 | 331TH13 | 343TH11      | 363TH12     | 373TH12      |
|---------|---------|---------|--------------|-------------|--------------|
| 7,910   | 8,800   | 9,105   | 10,260       | 11,310      | 11,200       |
| 1,330   | 1,360   | 2,020   | 2,220        | 2,040       | 2,075        |
| 6,580   | 7,440   | 7,085   | 8,040        | 9,270       | 9,125        |
| 2,090   | 2,200   | 2,890   | 2,740        | 3,930       | 4,040        |
| 10,000  | 11,000  | 11,995  | 13,000       | 15,240      | 15,240       |
| 92"     | 92"     | 92"     | 92"          | 92"         | 92"          |
| 12' 3"  | 12' 3"  | 12' 5"  | 12' 7"       | 12' 7"      | 13' 3"       |
| 102"    | 102"    | 102"    | 102"         | 102"        | 102"         |
| 31' 11" | 34' 2"  | 38' 1"  | 38' 1"       | 41' 7"      | 41' 0"       |
| 8       | 8       | 8       | 8            | 8           | 8            |
| 6       | 6       | 6       | 6            | 6           | 6            |
| 75      | 75      | 75      | 75           | 75          | 75           |
| 57      | 57      | 32      | 57           | 57          | 57           |
| 57      | 57      | 32      | 57           | 57          | 57           |
| 60      | 60      | 60      | 60           | 60          | 60           |
| 30      | 30      | 30      | 30           | 30          | 30           |
| 16"     | 16"     | 16"     | 16"          | 16"         | 16"          |
| 18'     | 17'     | 20'     | 14'/10' opt. | 18'/9' opt. | 14'/11' opt. |

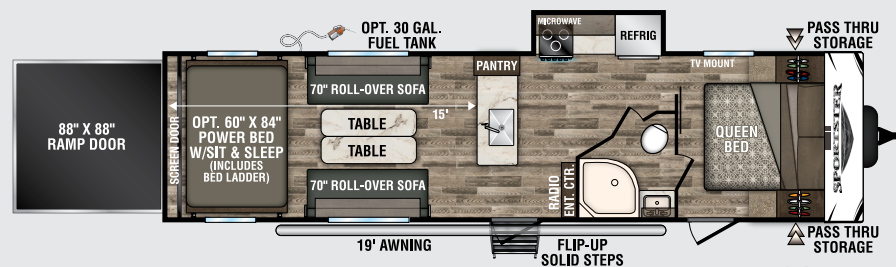
\*This weight reflects the rolling average unit weight for each model. Your trailer weight will vary according to optional equipment.

\*\* Fifth Wheel exterior length is measured from the center of the hitch pin to the rear bumper.

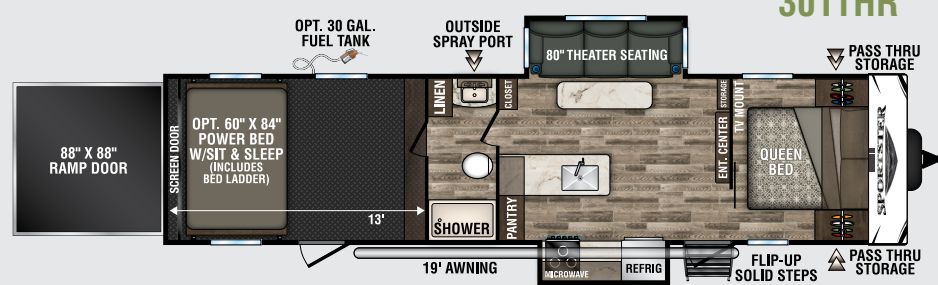


290THR  
Power Bed Option290THR **NEW**

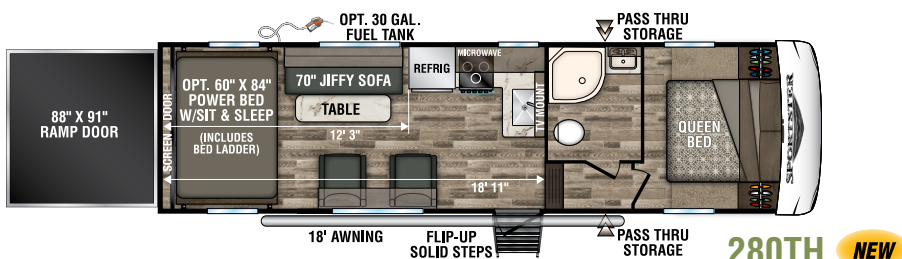
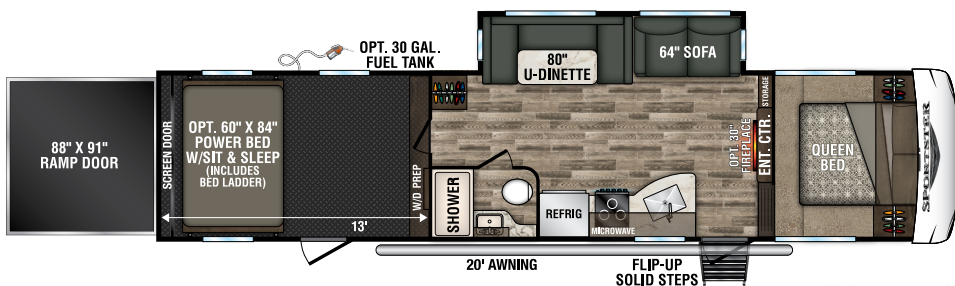
321THR13



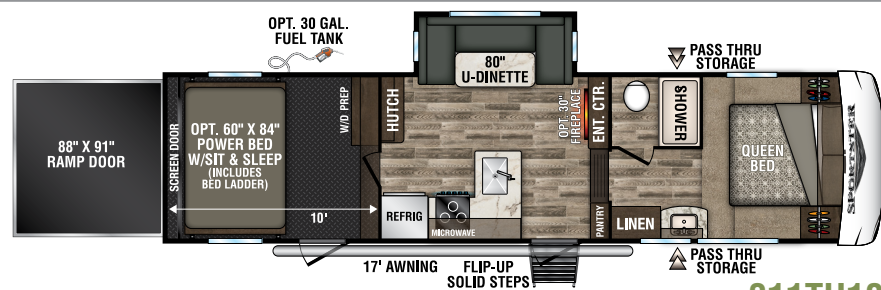
301THR



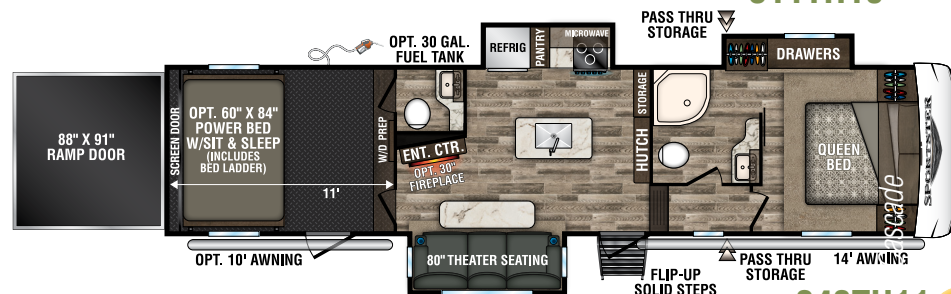
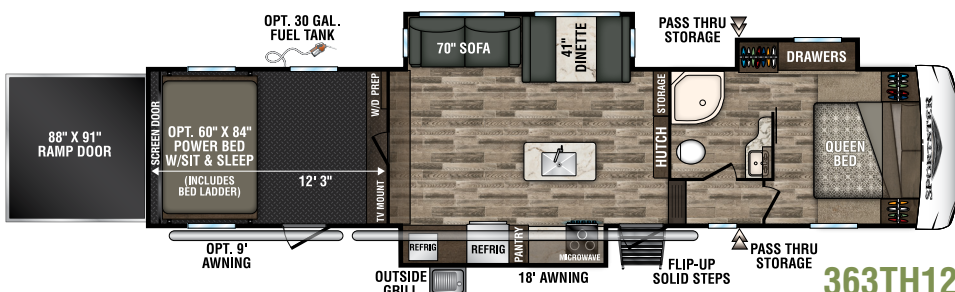
342THR13

280TH **NEW**

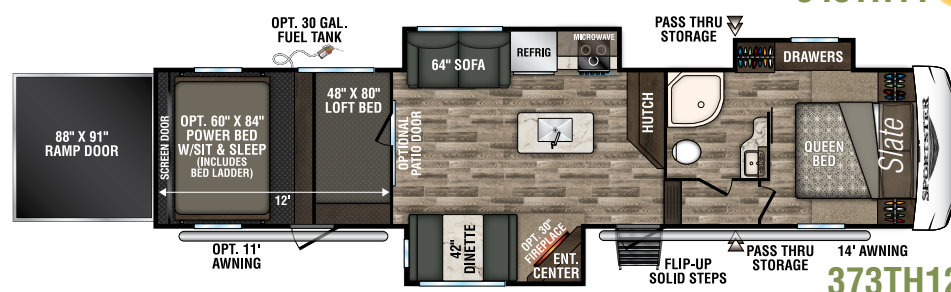
331TH13



311TH10

343TH11 **NEW**

363TH12



373TH12



# SPORTSTER

## EXTERIOR FEATURES



### STANDARD FLIP-UP ENTRY STEP

Solid footing, coming and going, plus handy friction hinge door with auto-close feature and large folding grab handle



### POWER AWNING WITH LED LIGHT STRIP

provides relaxing nighttime ambience



### ALUMINUM WHEELS

Nitrogen-filled 16-inch tires with aluminum wheels, spare tire and self-adjusting brakes



Equa-Flex rubberized equalizer absorbs road shock and reduces fore-to-aft movement



**POWER TONGUE JACK**  
with LED light makes setup easy 24/7



### LIGHTED BAGGAGE COMPARTMENT

Extra-large, smooth, screwless baggage doors with magnetic catches

### GENERATOR STORAGE

Optional 4.0 or 5.5 generator





# GARAGE FEATURES



## CARGO TIE-DOWNS

Sturdy, heavy-duty tie-down rings keep toys in place during travel

## GARAGE CONVERTS EASILY

Sportster garages boast Tuff Ply® flooring with 12" protective diamond plate on sidewalls and 90-inch interior height, and feature an optional 60 x 84-inch power bed with Sit-and-Sleep, that folds flat against the walls. (321THR13 shown).

## PARTY PATIO PACKAGE



Added insulation extends the camping season, with a fully-enclosed, insulated and heated underbelly that protects tanks and pipes.





# DOWNLOAD YOUR FREE

**KZ RV APP TODAY!**

Owning and operating an RV has never been easier. Everything you need is now in the palm of your hand.



Track RV Maintenance



Keep RV Service Close



Set Custom Notifications



Reference Checklists for RV Trips



**DOWNLOAD  
NOW!**



VISIT [KZ-APP.COM](http://KZ-APP.COM) TO LEARN MORE.



## True 2-Year Limited Warranty!

KZ's 24-month hitch-to-bumper limited warranty umbrella is the best two-year warranty in the business, covering more than 1,500 operation codes for a full two years and approved for full-time living, thus protecting your investment while you enjoy your RV.

You've found the RV that fits your needs... now you want total confidence in your selection. Because KZ has total confidence in the products we build, we can pass that along to the original purchaser, starting from the date of delivery. Rest easy... you've partnered with the right manufacturer!

## KZ Recreational Vehicles... *A History in Progress*

Sam King and Daryl Zook built a truck camper in 1972, with founding principles of quality, fairness, courtesy and integrity. Nearly 50 years later, our 625 employees build your recreational vehicles, on our 100+ acre campus in Shipshewana, IN.

When you communicate with KZ, you'll always be speaking with someone who takes you seriously and treats you with respect. Thank you for considering KZ, and welcome to our world-wide family of satisfied customers!



Portions of this brochure were used with the expressed authority of Dexter Axle, but Dexter Axle is not responsible for the accuracy of the information contained herein.



Dealer:



985 N 900 W • Shipshewana, IN 46565  
E-mail [kz@kz-rv.com](mailto:kz@kz-rv.com) • [www.kz-rv.com](http://www.kz-rv.com)

Due to continual research and advances, manufacturer reserves the right to change specifications, design, price and equipment without notice, and assumes no responsibility for any error in this literature. Some items shown are not included as standard or optional equipment. ©2019KZ | 02/12/19 | 60M