

# SPORTSMEN

## Destination Trailers

2019 Décor



Cashew

Walnut

### Standards

- KZ Exclusive Tough Shield Exterior Metal
- 5/8" Tongue & Groove Plywood Floor
- New Aerodynamic Front Profile
- Diamond Plate Rock Guard on Front of Travel Trailers
- Enclosed Pin Box on FW's
- 3/8" Fully Walk-On Roof Decking
- 1-Piece Seamless Roof w/SuperFlex® Roofing Material
- Awning w/Drip Rail & Spouts
- Tinted Windows
- Super-Sized Panoramic Slideout Window
- Radius Entry Door
- Smooth Screwless Baggage Doors
- LED Pass-Through Storage Light
- Cable Hookup
- Digital TV Antenna w/Booster
- Self-Adjusting Electric Brakes
- Radial Tires
- Rear Bumper w/Sewer Hose Storage
- Winter Bypass Kit
- 2 or 4 Stabilizer Jacks (model specific)
- Outside Shower
- (2) 30# Gas Bottles w/Bottle Cover
- 30 AMP Service
- 13,500 BTU A/C
- 3-Burner Cooktop
- Range Hood w/12V Light & Exhaust Fan
- Microwave w/Turntable
- Oven
- Acrylic Sink w/High-Rise Faucet
- Roller Ball Bearing Drawer Guides

- Large Overhead Cabinets
- LED Interior Lighting
- Monitor Panel
- Built-In Medicine Cabinet w/Mirror in Bath
- Shower Surround
- Power Vent in Bath
- Skylight over Shower
- Reversible Quilted Comforter
- Main Bedroom Roof Vent

### Options

- Color Infused Ivory Exterior Fiberglass
- 15,000 BTU A/C IPO 13,500 BTU A/C
- 2nd A/C (13,500 BTU)
- Bedroom LED TV w/Inside/Outside Bracket
- Radiant Technology Package (foil in floor, roof, front, rear)
- Freesliding Dinette Table & 4 Chairs IPO Dinette (required on 363FL, 364BH)
- Tri-Fold HAB Sofa IPO Jackknife (required on 363FL, 363RL, 364BH)
- Plumb for Washer/Dryer w/50 AMP & 2nd A/C prep (STD on DTs) (only 50 AMP standard on 364BH)
- Theater Seating w/Heat & Massage Features (required on 363RL)
- Front & Rear Electric Stabilizer Jacks
- Aluminum Wheels
- MaxxAir Vent Fan LR or Bath
- Wireless Backup Camera System - Observation
- Bumper Mount Grill

- Roof Ladder
- Destination PKG – Add Spare Tire & Alumitread Entry Steps

### KZ Advantage Package (mandatory option)

#### Exterior

- New Aerodynamic Front Profile
- 5/8" T&G Plywood Floor
- Key-Alike for Baggage & Entry Doors
- Friction Hinge Entry Door
- Large Folding Grab Handle
- Power Front Jack
- Equa-Flex® Suspension
- Nitrogen-Filled Tires
- Exterior Speakers
- Battery Disconnect Switch
- Black Tank Flush
- Toylok
- Backup Camera Prep
- Solar Prep
- Climate Package (heated, insulated & enclosed underbelly)

#### Interior

- Seamless Countertops w/Deep Undermount Stainless Steel Kitchen Sink
- Sink Cover
- Drop-In Cooktop w/Glass Cover & Oven
- Kitchen Skylight
- 36" Storage Bins in Booth Dinette
- Bright White LED Light Strip above Main LR Slide Room(s)
- Jackknife w/Middle Console & Bolster Arms

- 2 Motion Sensor Lights
- 30" Fireplace
- LED TV
- Multiple Media Stereo w/DVD/Bluetooth/NFC Wireless Connectivity
- (2) 6.5" Interior Speakers
- 12V Dual USB Port
- Pleated Shades
- Foot-Flush Toilet
- Plywood Bed Base
- Upper Bunk Windows (select models)
- Pillowtop Mattress
- Push Back Recliners (select models)
- Wider Pocket/Passage Interior Doors

### KZ Convenience Package (mandatory option)

#### Exterior

- Power Awning w/LED Light Strip
- Magnetic Baggage Door Catches
- Omnidirectional HDTV Antenna
- LED Lights in Exterior Speakers

#### Interior

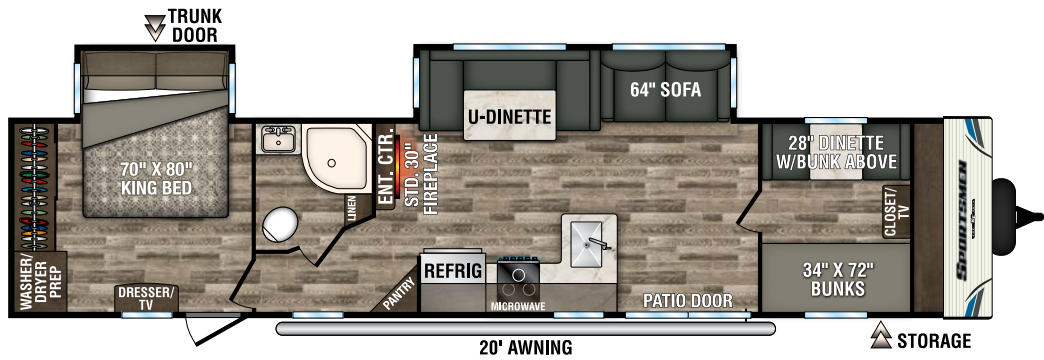
- Residential Grade Linoleum
- 8 CU FT Gas/Electric Refrigerator (N/A in TTs, 110V in TTs)
- Stainless Steel Residential Kitchen Faucet w/Pulldown Sprayer
- Surfex® Wood Step in FW Hallway
- Interior Control Switches on OH End Cabinet
- Dark Accent Trim on Corners/Entry Doors
- Electric Outlet in Bunk Area

Destination Trailers	362BH	362DB	363FL	363RL	364BH
UVW (Unloaded Vehicle Weight)*	8,150	8,530	8,910	8,740	9,580
Dry Hitch Weight*	1,150	1,170	1,460	1,220	1,830
Dry Axle Weight*	7,000	7,360	7,450	7,520	7,750
NCC (Net Carrying Capacity)	2,310	1,930	1,550	1,720	880
GVWR	10,460	10,460	10,460	10,460	10,460
Interior Height	82"	82"	82"	82"	82"
Exterior Height w/ A/C	11' 4"	11' 4"	11' 4"	11' 4"	11' 4"
Exterior Width	96"	96"	96"	96"	96"
Exterior Length	40' 9"	40' 9"	40' 9"	40' 9"	40' 9"
Refrigerator (cu. feet)	18	18	18	18	18
Water Heater Cap. (gal. G/E w/DSI)	6	6	6	6	6
Fresh Water Cap. (gal.)	38	38	38	38	38
Waste Water Cap. (gal.)	32	32	32	32	32
Gray Water Cap. (gal.)	64	64	64	64	64
LP Gas Cap. (lbs.)	60	60	60	60	60
Furnace BTUs (1,000s)	30	30	30	30	30
Tire Size	15"	15"	15"	15"	15"
Awning	20'	20'	18'	20'	20'

\*This weight reflects the rolling average unit weight for each model. Your trailer weight will vary according to optional equipment.

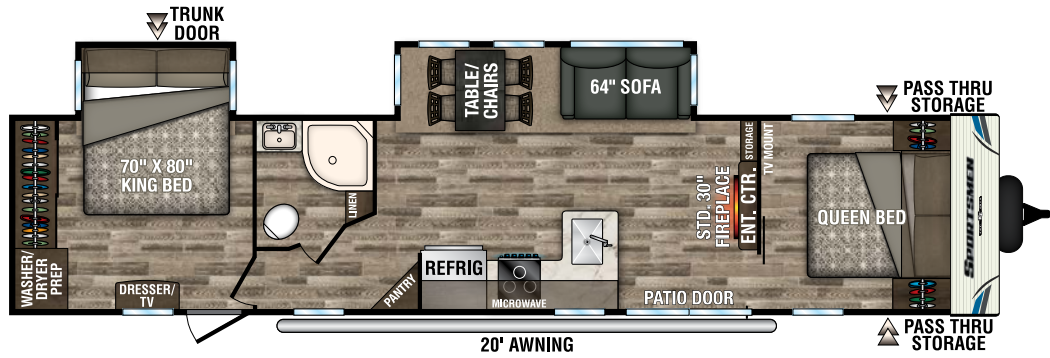
362BH

NEW



362DB

NEW

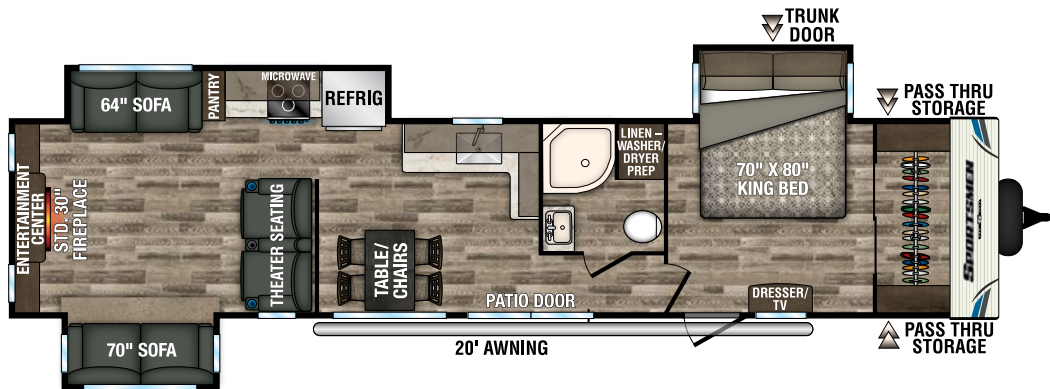


363FL

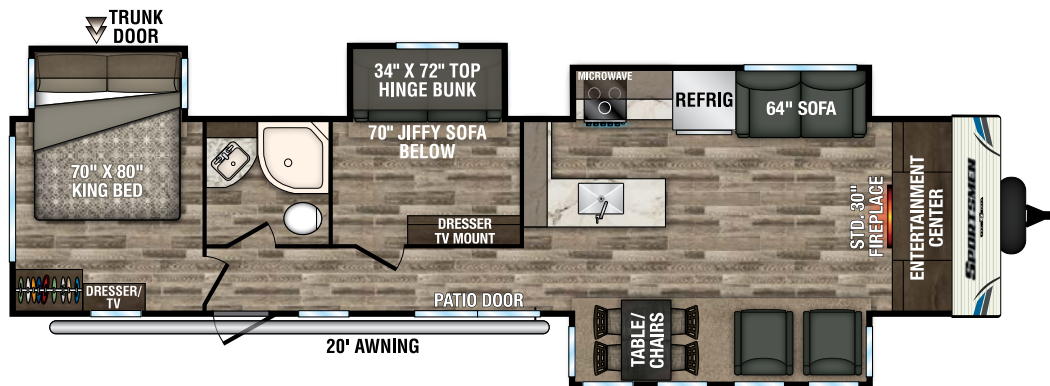


363RL

NEW



364BH



985 N 900 W • Shipshewana, IN 46565  
 E-mail [kz@kz-rv.com](mailto:kz@kz-rv.com) • [www.kz-rv.com](http://www.kz-rv.com)

Due to continual research and advances, manufacturer reserves the right to change specifications, design, price and equipment without notice, and assumes no responsibility for any error in this literature. Some items shown are not included as standard or optional equipment. ©2018KZ | 12/10/18 | 25M