

# SPORTSMEN

## Classic

### Ultra Lightweight Travel Trailers

2019 Décor



Kona

#### Standards

- KZ Exclusive Tough Shield .030 Exterior Metal
- R-7 Insulation
- Front Diamond Plate
- Alum-a-Tough® Roofing w/12-Year Limited Warranty
- Tinted Windows
- Radial Tires
- Self-Adjust Electric Brakes
- Rear Bumper w/Sewer Hose Storage
- Digital TV Antenna
- Cable Hookup
- City Water Fill
- 12V Converter w/Charger
- LP Tank
- 2-Burner Range
- Microwave
- LP/Electric Refrigerator
- Single-Bowl Sink
- 6-Gallon LP DSI Water Heater
- Rail-Style Cabinet Doors w/Modern Handles
- Overhead Cabinets
- LED Interior Lights
- Shower & Toilet
- Tank Monitor Panel

#### Options

- 13,500 A/C Low Pro (required on 180RBT)
- U-Dinette IPO Standard Dinette (181BH only)
- 7 CF Refrigerator (required on 180RBT & must option roof air) (N/A 170RD)
- 24" TV w/Inside/Outside Bracket (160QB, 180TH, 180THT, 190BH only)
- Retractable Screen Wall (toy haulers only)
- Front Window (N/A on toy haulers, 160RBT, 180RBT)
- Wireless Backup Camera System - Observation

#### Off-Road Package

- Aluminum Rims w/15" Mud Tires
- Extra Ground Clearance
- Electronically-Controlled Heated Holding Tank
- Double Entry Step (select models)

#### KZ Advantage Package (mandatory option)

##### Exterior

- 5/8" T&G Plywood Floor
- 26" Entry Doors w/Flip-Up Entry Steps
- 8,000 BTU A/C
- Power Awning w/LED Light Strip
- Key-Alike Program for Baggage & Entry Doors
- Aqualon Edge Tent Material
- Folding Grab Handle

- Exterior Speakers
- Spare Tire & Carrier
- 4 - Scissor Style Stabilizer Jacks
- Two-Toned Exterior Metal
- Solar Prep
- Backup Camera Prep
- Nitrogen-Filled Tires

##### Interior

- 20,000 BTU Furnace
- Plywood Bed Base
- Foot-Flush Toilet
- (2) 6.5" Interior Speakers
- 12V Dual USB Port
- Digital Media Stereo w/Bluetooth & USB Port

#### KZ Convenience Package (mandatory option)

##### Exterior

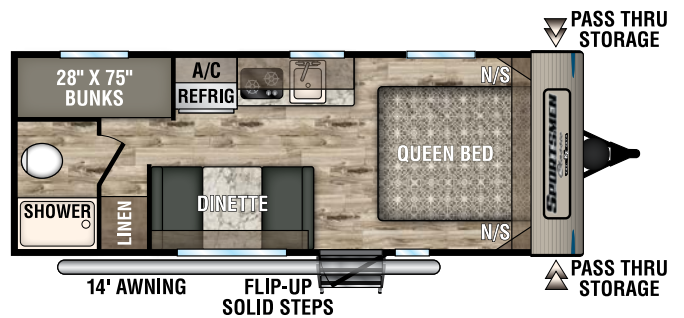
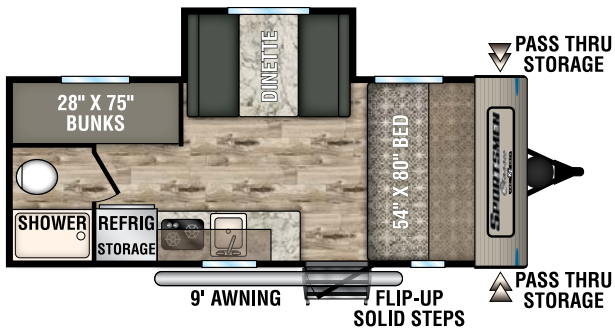
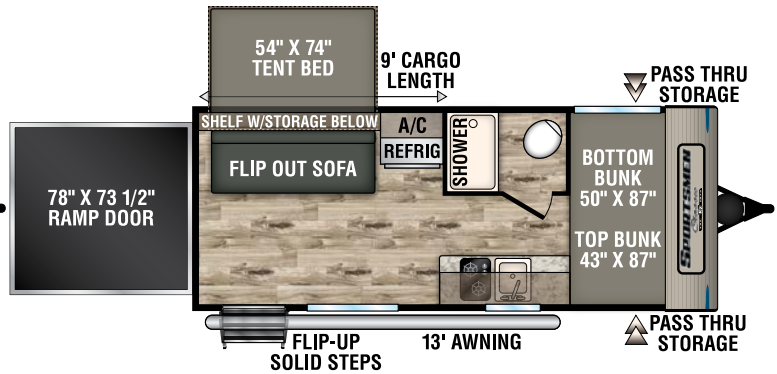
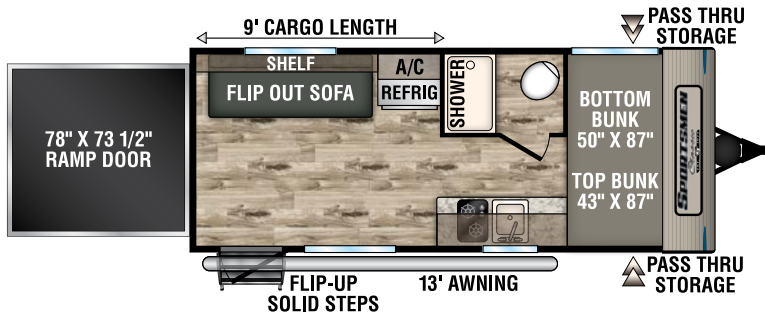
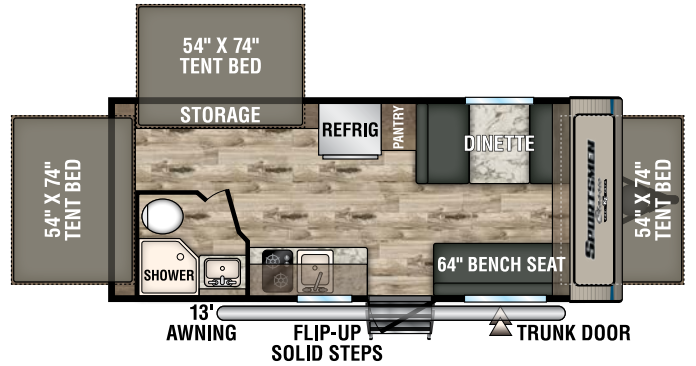
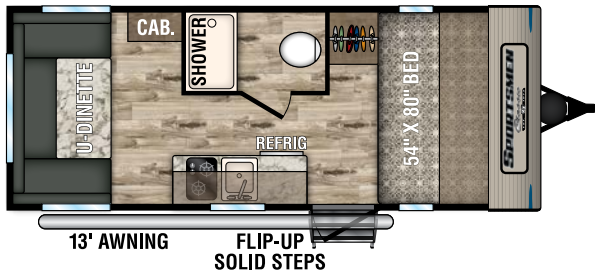
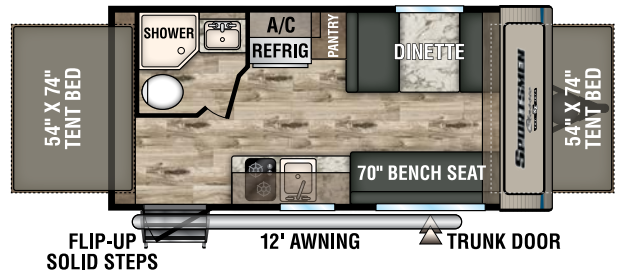
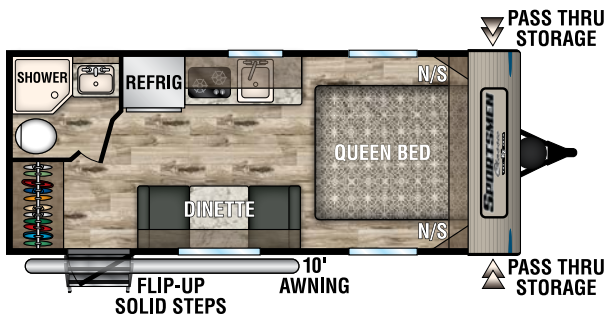
- Friction-Hinge Entry Door
- Double Entry Steps (select models)
- Omnidirectional HDTV Antenna

##### Interior

- Residential-Grade Linoleum
- Rail-Style Cabinet Doors
- Interior Control Switches on Overhead End Cabinet

| Travel Trailers                               | 160QB   | 160RBT  | 170RD   | 180RBT | 180TH  | 180THT | 181BH  | 190BH  |
|---|---------|---------|---------|--------|--------|--------|--------|--------|
| UVW (Unloaded Vehicle Weight)*                | 2,740   | 2,696   | 2,800   | 3,116  | 3,210  | 3,330  | 2,840  | 3,270  |
| Dry Hitch Weight*                             | 376     | 336     | 395     | 426    | 440    | 410    | 370    | 390    |
| Dry Axle Weight**                             | 2,364   | 2,360   | 2,405   | 2,690  | 2,770  | 2,920  | 2,470  | 2,880  |
| NCC (Net Carrying Capacity)                   | 760     | 804     | 700     | 1,384  | 1,790  | 1,670  | 660    | 1,530  |
| GVWR  | 3,500   | 3,500   | 3,500   | 4,500  | 5,000  | 5,000  | 3,500  | 4,800  |
| Interior Height                               | 78"     | 78"     | 78"     | 78"    | 78"    | 78"    | 78"    | 78"    |
| Exterior Height w/o Roof A/C (unless noted)** | 107"    | 107"    | 112"    | 118"   | 107"   | 107"   | 112"   | 112"   |
| Exterior Width                                | 90"     | 90"     | 90"     | 90"    | 90"    | 90"    | 84"    | 90"    |
| Exterior Length                               | 21' 10" | 18' 10" | 21' 10" | 21' 3" | 21' 7" | 21' 7" | 20' 6" | 23' 2" |
| Refrigerator (cu. feet)                       | 4       | 4       | 3       | 7      | 4      | 4      | 4      | 4      |
| Water Heater Cap. (gal. LP w/DSI)             | 6       | 6       | 6       | 6      | 6      | 6      | 6      | 6      |
| Fresh Water Cap. (gal.)                       | 20      | 20      | 20      | 20     | 38     | 38     | 20     | 20     |
| Waste Water Cap. (gal.)                       | 32      | 24      | 32      | 24     | 32     | 32     | 15     | 32     |
| Gray Water Cap. (gal.)                        | 32      | 32      | 32      | 32     | 32     | 32     | 15     | 32     |
| LP Gas Cap. (lbs.)                            | 20      | 20      | 20      | 20     | 20     | 20     | 20     | 20     |
| Furnace BTUs (1,000s)                         | 20      | 20      | 20      | 20     | 20     | 20     | 20     | 20     |
| Tire Size                                     | 14"     | 14"     | 14"     | 13"    | 15"    | 15"    | 14"    | 14"    |
| Awning  | 10'     | 12'     | 13'     | 13'    | 13'    | 13'    | 9'     | 14'    |

\*This weight reflects the rolling average unit weight for each model. Your trailer weight will vary according to optional equipment. \*\*This exterior height is *with roof A/C*.



985 N 900 W • Shipshewana, IN 46565  
E-mail [kz@kz-rv.com](mailto:kz@kz-rv.com) • [www.kz-rv.com](http://www.kz-rv.com)

Due to continual research and advances, manufacturer reserves the right to change specifications, design, price and equipment without notice, and assumes no responsibility for any error in this literature. Some items shown are not included as standard or optional equipment. ©2019KZ | 1/22/19 | 10M