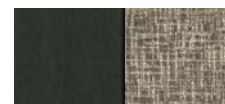




## Ultra Lightweight Travel Trailers

2019 Décor



Kona

### Standards

- Alum-a-Tough® Roofing w/12-Year Limited Warranty
- Tinted Windows
- R-7 Insulation
- Diamond Plate Rock Guard
- Rear Bumper w/Sewer Hose Storage
- Self-Adjust Electric Brakes
- Radial Tires
- 20# LP Bottle
- Cable Hookup
- City Water Fill
- Digital TV Antenna
- 12V Converter w/Charger
- 6 GAL LP DSI Water Heater
- Monitor Panel
- Linoleum Throughout
- 2-Burner Cooktop
- Microwave
- 4 CU FT LP/Electric Refrigerator (E160RBT, E180TH, E181RB, E191BH)
- 7 CU FT Double-Door Refrigerator (E171MB, E180RBT, E191SS, E201RB, E231BH)
- Amish-Crafted Rustic Maple Cabinets
- Rail-Style Cabinet Doors w/Modern Handles
- Overhead Cabinets
- LED Interior Lighting
- Shower & Toilet

### Options

- 13,500 A/C Low Pro (required on E180RBT, E191SS, E201RB, E231BH)

- U-Dinette IPO Standard Dinette (E181RB, E191BH)
- 7 CF Refrigerator (required on E180RBT, E191SS, E201RB, E231BH & must option roof A/C)
- 24" TV w/Inside/Outside Bracket (E180TH, E181RB, E191BH, E191SS, E201BH)
- Aluminum Wheels - 2 (N/A E180RBT, E201RB, E231BH)
- Aluminum Wheels - 4 (E180RBT, E201RB, E231BH)
- Murphy Bed w/Sofa (E201RB)
- Wireless Backup Camera System - Observation
- Front Window (N/A E160RBT, E180RBT, E180TH)
- Bedspread (N/A E160RBT, E180RBT)
- Retractable Screen Wall (toy hauler only)

### Off-Road Package

- Aluminum Rims w/15" Mud Tires
- Extra Ground Clearance
- Electronically-Controlled Heated Holding Tank
- Double Entry Step (select models)

### KZ Advantage Package

#### (mandatory option)

#### Exterior

- Color Infused Titanium Exterior Fiberglass
- 5/8" T&G Plywood Floor
- 26" Entry w/Flip-Up Entry Step
- 8,000 A/C
- Key-Alike Program for Baggage & Entry Doors
- Aqualon Edge Tent Material
- Folding Grab Handle

- Exterior Speakers
- Spare Tire & Carrier
- 4 - Scissor Style Stabilizer Jacks
- Solar Prep
- Backup Camera Prep
- Nitrogen Filled Tires

#### Interior

- 20,000 BTU Furnace
- Seamless Countertops
- Pleated Shades
- Convection Microwave
- Shower Surround
- Plywood Bed Base
- (2) 6.5" Interior Speakers
- Digital Media Stereo w/Bluetooth & 12 Volt Dual USB Port

### KZ Convenience Package

#### (mandatory option)

#### Exterior

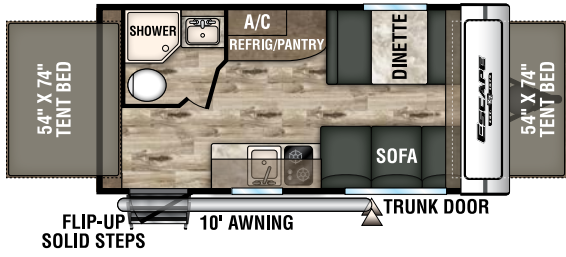
- Power Awning w/LED Light Strip
- Friction Hinge Entry Door
- Double Entry Steps (select models)
- Omnidirectional HDTV Antenna

#### Interior

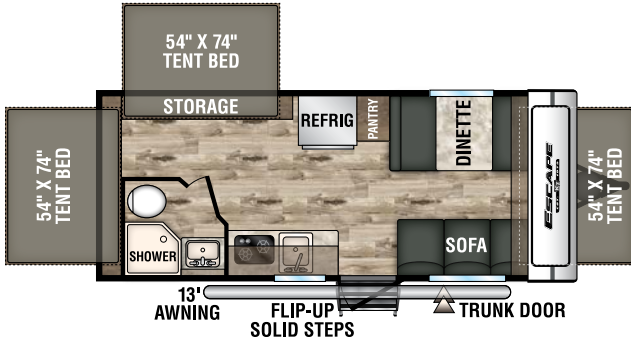
- Residential Grade Linoleum
- Rail Style Cabinet Doors
- Interior Control Switches Overhead End Cabinet

Travel Trailers	E160RBT	E171MB	E180RBT	E180TH	E181RB	E191BH	E191SS	E201BH	E201RB	E231BH
UVW (Unloaded Vehicle Weight)*	2,690	3,170	3,220	3,290	3,099	3,233	3,530	3,480	3,530	3,760
Dry Hitch Weight*	350	430	420	460	445	446	490	460	370	540
Dry Axle Weight*	2,340	2,740	2,800	2,830	2,654	2,787	3,040	3,020	3,160	3,220
NCC (Net Carrying Capacity)	810	830	1,280	1,710	901	767	1,470	920	970	740
GVWR	3,500	4,000	4,500	5,000	4,000	4,000	5,000	4,400	4,500	4,800
Interior Height	78"	78"	78"	78"	78"	78"	78"	78"	78"	78"
Exterior Height w/o A/C (unless noted)**	107"	118**	118**	107"	112"	112"	118**	112"	118**	118**
Exterior Width	90"	90"	90"	90"	90"	90"	90"	90"	90"	90"
Exterior Length	18' 10"	19' 8"	21' 3"	21' 7"	21' 11"	21' 11"	23' 8"	23' 7"	23' 10"	27' 3"
Refrigerator (cu. feet)	4	7	7	4	4	4	7	4	7	7
Water Heater Cap. (gal. LP w/DSI)	6	6	6	6	6	6	6	6	6	6
Fresh Water Cap. (gal.)	20	20	20	38	20	20	38	20	20	20
Waste Water Cap. (gal.)	24	32	24	32	32	32	32	32	32	24
Gray Water Cap. (gal.)	32	32	32	32	32	32	32	32	32	32
LP Gas Cap. (lbs.)	20	20	20	20	20	20	20	20	20	20
Furnace BTUs (1,000s)	20	20	20	20	20	20	20	20	20	20
Tire Size	14"	15"	13"	15"	15"	15"	15"	15"	13"	13"
Awning	10'	11'	13'	13'	10'	10'	14'	13'	15'	14'

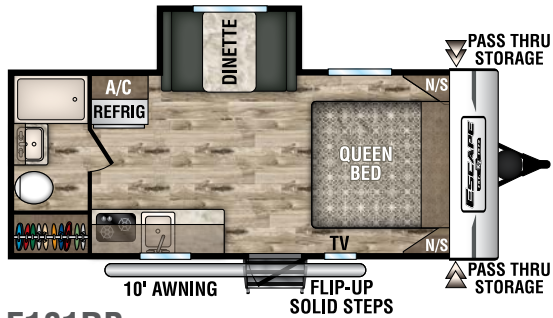
\*This weight reflects the rolling average unit weight for each model. Your trailer weight will vary according to optional equipment. \*\*This exterior height is *with A/C*.



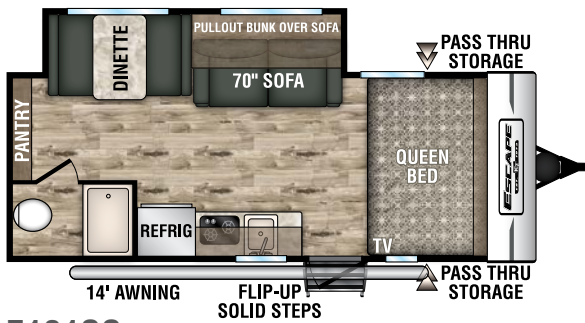
**E160RBT**



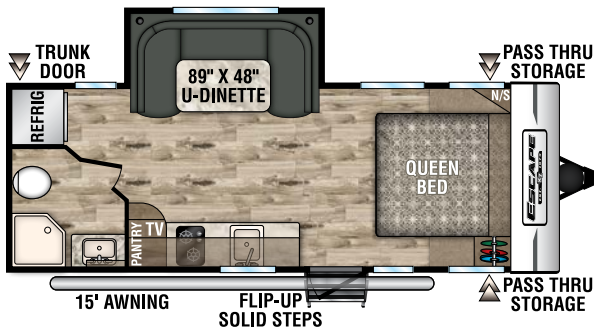
**E180RBT**



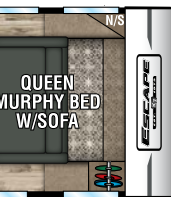
**E181RB**



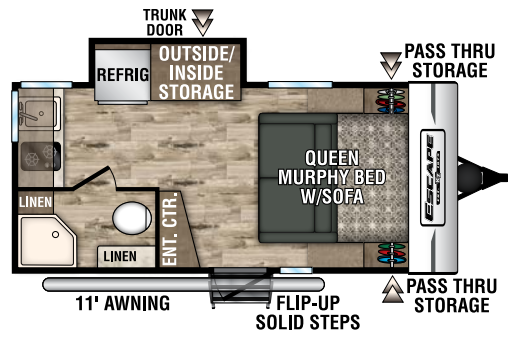
**E191SS**



**E201RB**

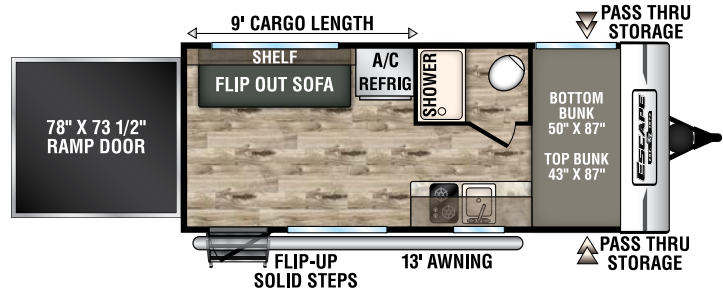


**E201RB**  
Murphy Bed  
Option

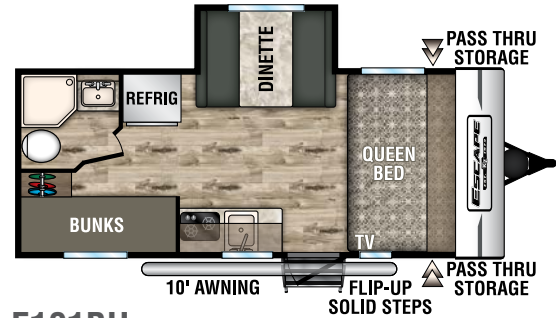


**E171MB**

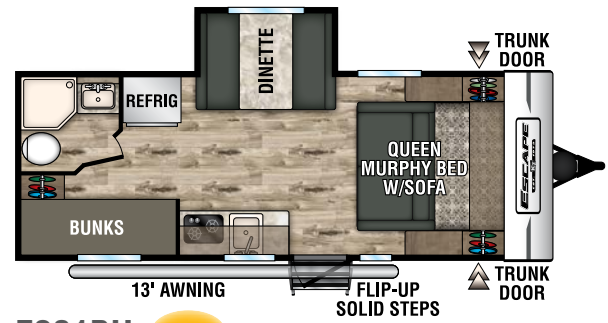
**NEW**



**E180TH**

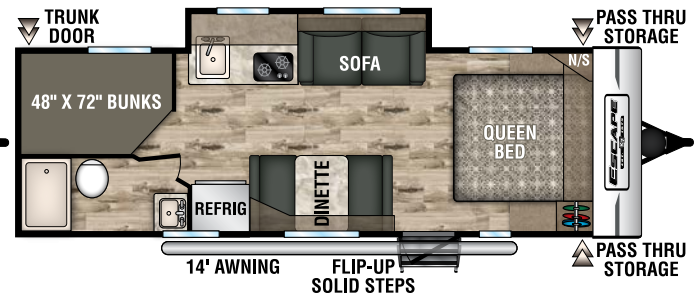


**E191BH**



**E201BH**

**NEW**



**E231BH**



985 N 900 W • Shipshewana, IN 46565  
E-mail [kz@kz-rv.com](mailto:kz@kz-rv.com) • [www.kz-rv.com](http://www.kz-rv.com)

Due to continual research and advances, manufacturer reserves the right to change specifications, design, price and equipment without notice, and assumes no responsibility for any error in this literature. Some items shown are not included as standard or optional equipment. ©2018 KZ | 12/10/18 | 25M