

DURANGO

HALF-TON

lightweight luxury fifth wheels

KZ
Est. 1972

DURANGO HALF TON

lightweight luxury fifth wheels



READY for fifth-wheeling, but still want TO TRAVEL LIGHT?

The all-new **DURANGO HALF-TON** was made for you, with uncompromising quality and indulgence, and at a lighter price point.

This mid-profile rig is nicely equipped with standard features and sumptuous décor, and all the connectivity and entertainment features you need to keep the troops happy.

- Seven floorplans
- All floorplans under 12,000 pounds GVWR
- Hitch-to-bumper two-year full-timer's warranty

D256RKT : Cascade décor



Solid hardwood
slideout fascia

COZY AMBIENCE

with the optional
40-inch wide-view fireplace.
(D256RKT shown)

DÉCOR OPTIONS



Cascade



Slate



STYLISH MASTER BEDROOM featuring LED lights, a padded headboard shelf with outlets, and 60" x 80" standard queen bed, that lifts up to reveal under-bed storage. Select models offer wardrobe slides. (D256RKT shown)





Stylish linoleum resists wear and tear...

...as does the stain-resistant carpeting.



RESIDENTIAL-GRADE FURNISHINGS

include a standard trifold hide-a-bed sofa, optional freestanding dinette table with a stow-leaf, and hinged dinette seats that offer additional storage.

LED TV & MULTI-MEDIA STEREO

with DVD, Bluetooth and wireless connectivity. (D259RLS shown)

L-SHAPED KITCHEN

with skylight features maple-glazed cabinetry, a stainless steel sink, seamless solid countertops, oven, and a gas cooktop with glass cover.



BUILT-IN DRAWERS
at the foot of the bed are roomy to keep your clutter at bay. (D256RKT shown)

LUXURY BATHROOM
incorporates linen closet, bathroom drawers, stainless steel oval sink, 36-inch shower with shelf space and skylight. (D259RLS shown)



CONSTRUCTION FEATURES

- 5-Sided 100% Aluminum Frame
- Steel Powder Coated Frame
- R-11 2" Block Foam Bonded Sidewalls w/EGS Metal Backing Strips (to support all int. cabinets)
- Lamilux® Gelcoat Fiberglass
- One-Piece ABS Slideroom Bottoms; Slideroom Floors Insulated
- Walk-On TPO Roof Membrane
- Pex® In-Floor Heated Waterlines & Kitchen Gray Pipes (all waterlines & drainlines are located above all insulation)
- Reinforced Heavy-Duty Fiberglass Front Cap (w/maximum turning radius on short bed trucks)
- 6' 2" Tall Main Floor Sliderooms

EXTERIOR FEATURES

- Dexter® Axles w/Self Adjusting Brakes & Height Adjusting Hangers
- 6-Lug Heavy-Duty Aluminum Rims w/16" Nitro Filled Tires
- 100% Exterior LED Running Lights & Taillights
- LED Front Docking Light & Sewer Hookup Light
- Electric Awning w/LED Lights
- Electric Front Jacks
- 3" x 14" Foam-Core In-Floor Straight-Line Heating System w/35,000 BTU Furnace
- Heated Water Convenience Center (incl. black tank flush, power fresh tank water fill, winterizing system, outside shower)

- Fully-Finished, Heated & Sealed Basement Storage Compartment
- Heated & Enclosed Dump Valves
- Gas/Electric/DSI Water Heater
- Swing-Away Assist Grab Handle
- Dual Lock Basement Storage Slam Latches
- Satellite Pre-Wire (roof & ground)
- Outside Speakers & Pre-Wire for Exterior TV
- Full-Perimeter Rain Gutter System (incl. rear & additional gutters over sliderooms)
- LP Quick Connect
- Under Mount Spare Tire
- 30 AMP Electrical Service

LIVING ROOM/KITCHEN FEATURES

- Pullout Sprayer Faucet
- Storage Shelf under Kitchen Sink
- Heavy-Duty 100 LB Drawer Glides on Every Drawer
- Baltic Birch Drawer Boxes
- Microwave
- Kitchen Window (most models)
- All-Wood Lumber Core Screwed Cabinets w/Hardwood Doors
- 5" Stainless Steel Cabinet Hardware
- 3/8" Re-Bond Carpet Pad w/22 OZ Residential Carpet
- XL Toggle Light Switches
- All LED Ceiling & Cabinet Lights w/ Multiple On/Off Switches

- All Kitchen OH Cabinets have Shelf & Extra-Tall Slide Lips

BATHROOM/BEDROOM FEATURES

- Shower Skylight
- Porcelain Foot-Flush Toilet
- All LED Lights in Bed & Bath w/Multiple Large Switches
- 12V Vent Fans in all Baths
- Bathroom Linen Closet (where available)
- Padded Headboard w/Shelf & Power at the Head of all Beds
- XL Under-Bed Storage
- Bedroom TV Pre-Wire

OPTIONS (EXTERIOR)

- 50 AMP Service w/2nd A/C Prep
- 2nd A/C Ducted (13,500 BTU)
- Dual Pane Windows (frameless)
- Electric Rear Stabilizer Jacks
- 4 Point Auto Electric Leveling
- Wireless Backup Camera System - Observation
- "Off the Grid" Solar Package
- Turning Point Hitch Pin
- 2nd LED Lighted Power Awning (D271RLD, D283RLT, D291BHT)
- Generator Prep
- 5.5KW LP Onan Generator (req prep & 50 AMP)

OPTIONS (INTERIOR)

- 40" Wideview Fireplace (requires 50 AMP on 256RKT, 271RLD, 283RLT)
- Bedroom LED TV w/Inside/Outside Bracket
- F/S Dinette Table & 4 Chairs IPO Dinette

- Theater Seating w/Heat & Massage Features IPO Tri-Fold HAB (250RES, 259RLS, 286BHD, 291BHT)
- Theater Seating w/Heat & Massage Features (required on 256RKT, 271RLD, 283RLT)
- 10 CU FT Refrigerator 12V IPO 8 CU FT Gas/Electric Refrigerator
- Power Vent Fan in Main Area or Bathroom
- Central Vac System (N/A on 250RES)

**KZ ADVANTAGE PACKAGE
(MANDATORY OPTION)****EXTERIOR**

- Polar White Gelcoat Exterior Fiberglass
- Partial Painted Fiberglass Front Cap
- 5-Sided Aluminum Framing
- Flip-Up Entry Steps (main entry)
- 15K Ducted A/C
- 5/8" T&G Plywood Floor Decking
- Key-Alike for Baggage & Entry Doors
- Friction Hinge Entry Door
- Screenshot Feature on Entry Door
- Large Folding Grab Handle
- Power Front Jacks
- Undermount Spare Tire
- Equa-Flex® Rubberized Suspension
- Nitrogen Filled Tires
- Battery Disconnect
- Black Tank Flush
- Backup Camera Prep
- Roof Mounted Solar Prep
- Climate Package (heated, insulated & enclosed underbelly)

- 2" Towing Receiver Hitch w/4 Pin Wire Harness Connection (3,000 lb tow rating & 300 lb hitch rating)
- Roof Ladder
- Fully Vented Attic System w/2 Attic Vents

INTERIOR

- Maple Glazed Cabinetry
- Glazed Solid Hardwood Slideout Fascia
- Seamless Countertops w/Deep Undermount Stainless Steel Kitchen Sink w/Sink Cover
- Drop-In Cooktop w/Glass Cover & Oven
- Kitchen Skylight
- 36" Pullout Storage Bins in Booth Dinette
- Tri-Fold HAB Sofa
- 2 Motion Sensor Lights
- LED TV
- Multiple Media Stereo w/DVD/Bluetooth/NFC Wireless Connectivity
- 12V Dual USB Charging Station
- Pleated Shades
- Porcelain Foot Flush Toilet
- Stainless Steel Oval Bathroom Sink
- Large 30" x 36" Shower & Surround
- Plywood Bed Base
- Upgraded Queen Black Label Pillowtop Mattress 60" x 80"

**KZ CONVENIENCE PACKAGE
(MANDATORY OPTION)****EXTERIOR**

- Power Awning w/LED Light Strip
- 16" Tires w/Aluminum Wheels
- Magnetic Catches for Baggage Doors
- Directional HDTV Antenna
- LED Lights in Exterior Speakers

INTERIOR

- Residential Grade Linoleum
- 8 CU FT Gas/Electric Refrigerator w/ Temperature Controls
- Stainless Steel Residential Kitchen Faucet w/Pulldown Sprayer
- Surfex Wood Step in FW Hallway
- Interior Control Switches on Overhead End Cabinet
- Dark Accent Trim on Corners/Entry Doors
- Electric Outlet in Bunk Area

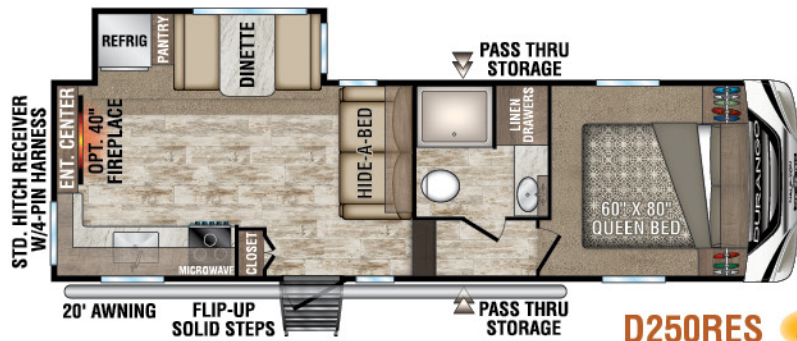
BONUS FEATURES

- 2-Year Limited Warranty (see flyer)
- KZ has received the Dealer Satisfaction Index Award for 18 years
- KZ's 47 years of stable, dedicated manufacturing experience, coupled with its predominant Amish workforce, heritage and commitment to superb quality, allow us to produce the lowest-priced luxury fifth wheel available.

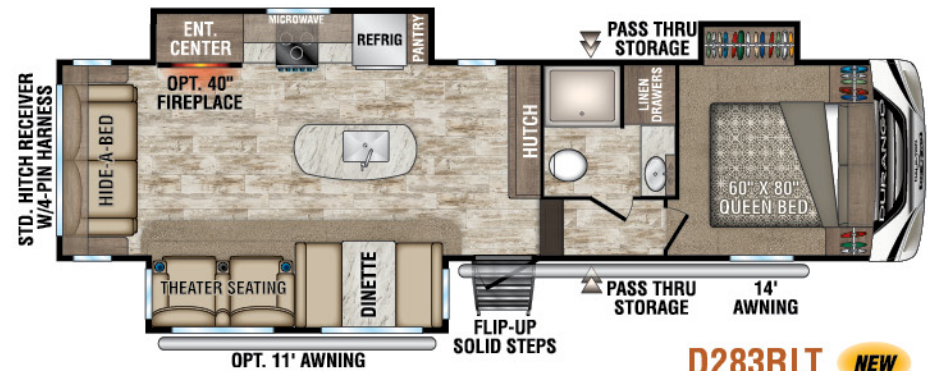
Fifth Wheels	D250RES	D256RKT	D259RLS	D271RLD	D283RLT	D286BHD	D291BHT
UVW (Unloaded Vehicle Weight)*	7,260	9,170	7,150	8,520	8,750	8,800	9,670
Dry Hitch Weight*	1,380	1,320	1,010	1,120	1,230	1,800	1,410
Dry Axle Weight*	5,880	7,850	6,140	7,400	7,520	7,000	8,260
NCC (Net Carrying Capacity)	1,740	1,330	1,850	1,980	1,750	1,700	1,830
GVWR	9,000	10,500	9,000	10,500	10,500	10,500	11,500
Exterior Height w/ A/C	12' 1"	12' 1"	12' 1"	12' 1"	12' 1"	12' 0"	12' 1"
Exterior Width	96"	96"	96"	96"	96"	96"	96"
Exterior Length**	28' 11"	33' 2"	29' 5"	33' 10"	33' 10"	33' 7"	37' 4"
Refrigerator (cu. feet)	8	8	8	8	8	8	8
Water Heater Cap. (gal. G/E w/DSI)	6	6	6	6	6	6	6
Fresh Water Cap. (gal.) [Including Water Heater Capacity]	61	61	61	61	61	61	61
Waste Water Cap. (gal.)	53	53	53	53	53	53	53
Gray Water Cap. (gal.)	93	93	53	53	53	93	53
1/2 Bath Cap. (gal.)	0	0	0	0	0	0	53
LP Gas Cap. (lbs.)	60	60	60	60	60	60	60
Furnace BTUs (1,000s)	35	35	35	35	35	35	35
Tire Size	16"	16"	16"	16"	16"	16"	16"
Awning	20'	14'	18'	14'/11' opt.	14'/11' opt.	(2) 14'	13'/11' opt.

*This weight reflects the rolling average unit weight for each model. Your trailer weight will vary according to optional equipment.

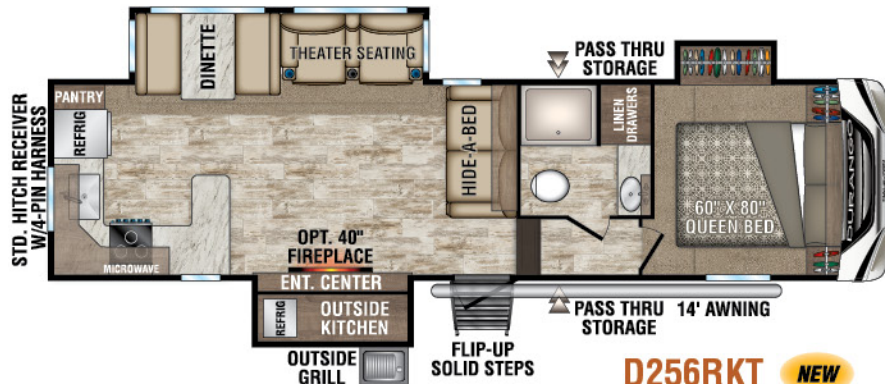
**Exterior length is measured from center of hitch pin to rear wall.



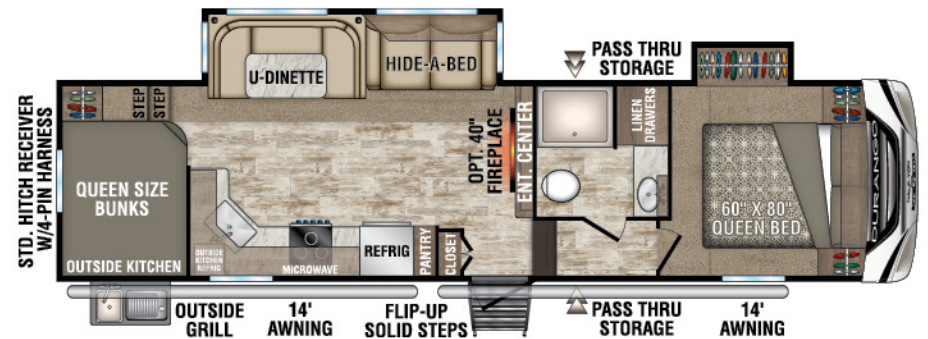
D250RES **NEW**



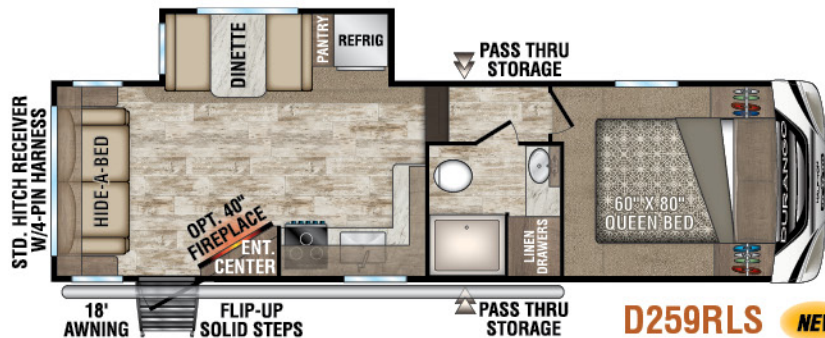
D283RLT **NEW**



D256RKT **NEW**



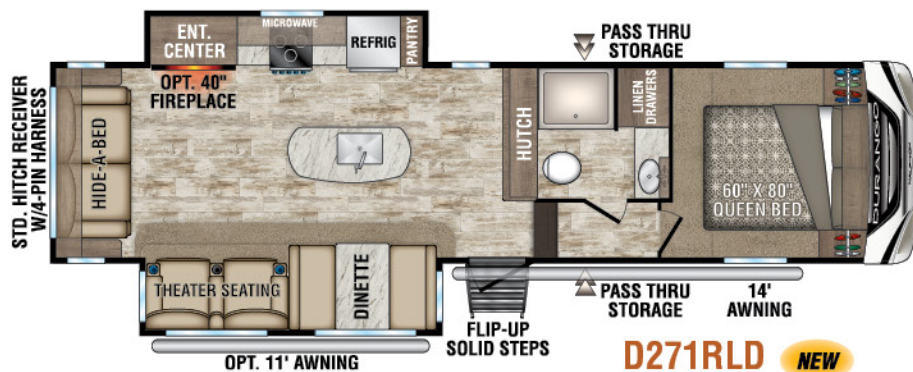
D286BHD **NEW**



D259RLS **NEW**



D291BHT **NEW**



D271RLD **NEW**



D291BHT
Slideout Option

DURANGO

HALF-TON

EXTERIOR FEATURES



PASS-THROUGH STORAGE
featuring motion-lit technology



Optional **4-POINT AUTO-LEVELING** does all the work



STANDARD FLIP-UP ENTRY STEP
solid footing, coming and going. Handy friction hinge with screenshot auto-door-close feature.



BATTERY DISCONNECT
conveniently-located



CENTRALIZED COMMAND CENTER
heated & all systems conveniently located



LED LIT POWER AWNING
makes it easy to claim your outdoor space



BACKUP CAMERA PREP



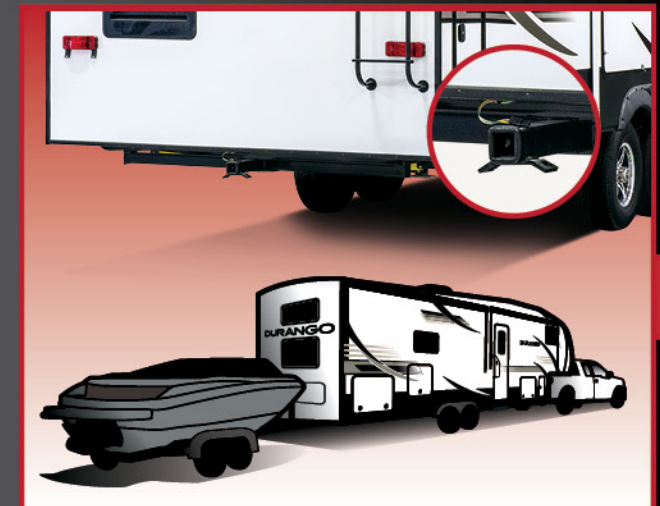
5/8" TONGUE & GROOVE PLYWOOD



LED-LIT EXTERIOR SPEAKERS



16" 6-lug heavy duty ALUMINUM WHEELS
with E-range tires



INTERIOR FEATURES



EXTRA-LARGE SURROUNDING WINDOWS
bring in tons of natural light



100 LB ball
bearing
**DRAWER
GUIDES**



Drop-in **COOKTOP** with
glass cover and **OVEN**



STAINLESS SINK
Deep undermount with
sink cover, and stainless
steel residential faucet with
pull-down sprayer



Double door Gas/Electric
8 CU FT REFRIGERATOR
with Temperature Controls



THEATER SEATING
with heat, massage, and
LED lighted cupholders
(on select models)



KZ **DURANGO** **TOWING** **PACKAGE**

3000 LB **300 LB**
TOW RATING **HITCH RATING**
4-PIN **2" TOWING**
WIRE HARNESS **RECEIVER**
CONNECTION **HITCH**



SOLAR POWER

Harness the power of the sun to run your
TV and outlets. Roof mounted solar prep
standard. **Optional "Off the Grid"**
solar package includes 170W panel, 1200W
inverter and interior control center.



FULLY **VENTED** **ATTIC SYSTEM**

Two attic vents are in each RV,
providing vital escape routes
for unwanted moisture
that accumulates during use.



CLIMATE **PACKAGE**

Fully-heated, insulated and enclosed under-
belly! R-11 sidewalls, R-24 roof and floor.

DOWNLOAD YOUR FREE

KZ RV APP TODAY!

Owning and operating an RV has never been easier. Everything you need is now in the palm of your hand.



Track RV Maintenance



Keep RV Service Close



Set Custom Notifications



Reference Checklists for RV Trips



**DOWNLOAD
NOW!**



VISIT KZ-APP.COM TO LEARN MORE.



True 2-Year Limited Warranty!

KZ's 24-month hitch-to-bumper limited warranty umbrella is the best two-year warranty in the business, covering more than 1,500 operation codes for a full two years and approved for full-time living, thus protecting your investment while you enjoy your RV.

You've found the RV that fits your needs... now you want total confidence in your selection. Because KZ has total confidence in the products we build, we can pass that along to the original purchaser, starting from the date of delivery. Rest easy... you've partnered with the right manufacturer!

KZ Recreational Vehicles... *A History in Progress*

Sam King and Daryl Zook built a truck camper in 1972, with founding principles of quality, fairness, courtesy and integrity. Nearly 50 years later, our 625 employees build your recreational vehicles, on our 100+ acre campus in Shipshewana, IN.

When you communicate with KZ, you'll always be speaking with someone who takes you seriously and treats you with respect. Thank you for considering KZ, and welcome to our world-wide family of satisfied customers!



Portions of this brochure were used with the expressed authority of Dexter Axle, but Dexter Axle is not responsible for the accuracy of the information contained herein.



Dealer:



985 N 900 W • Shipshewana, IN 46565
E-mail kz@kz-rv.com • www.kz-rv.com

Due to continual research and advances, manufacturer reserves the right to change specifications, design, price and equipment without notice, and assumes no responsibility for any error in this literature. Some items shown are not included as standard or optional equipment. ©2019KZ | 01/08/19 | 60M