

DURANGO

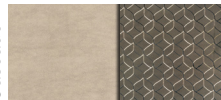
GOLD

Fulltime Luxury Fifth Wheels

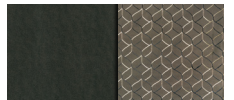


**2019
Décor**

Cascade



Slate

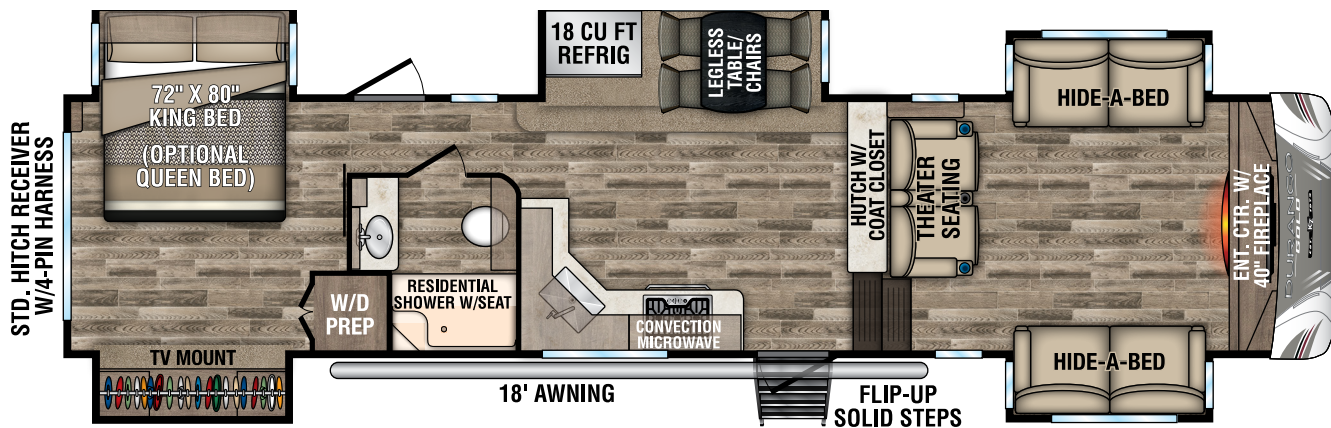
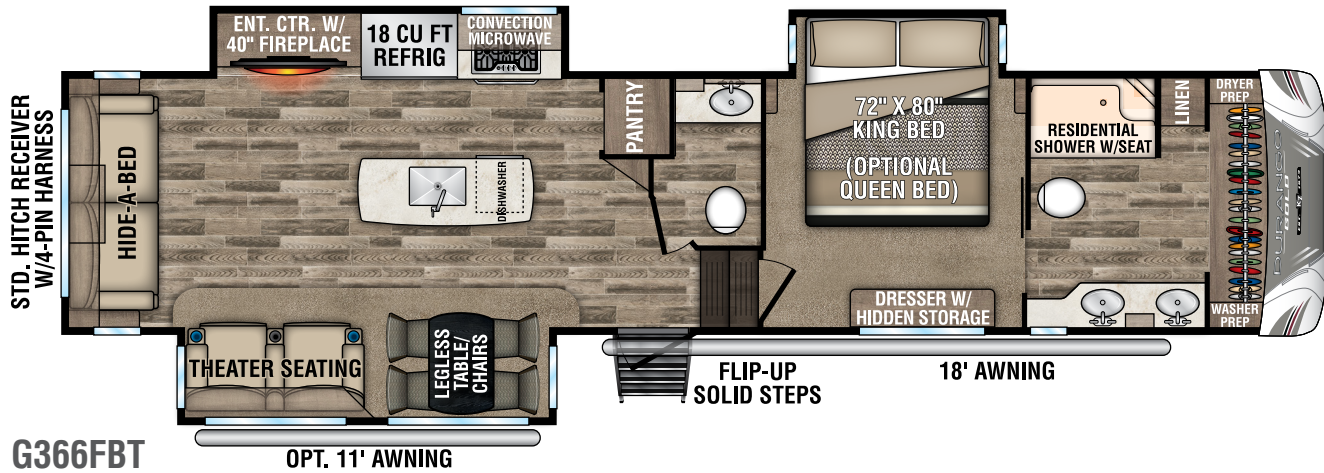
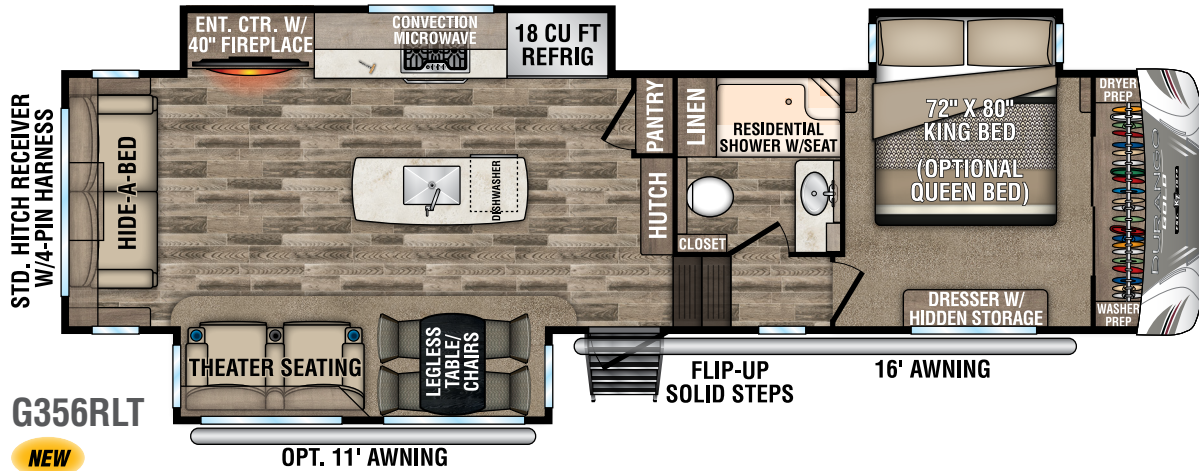
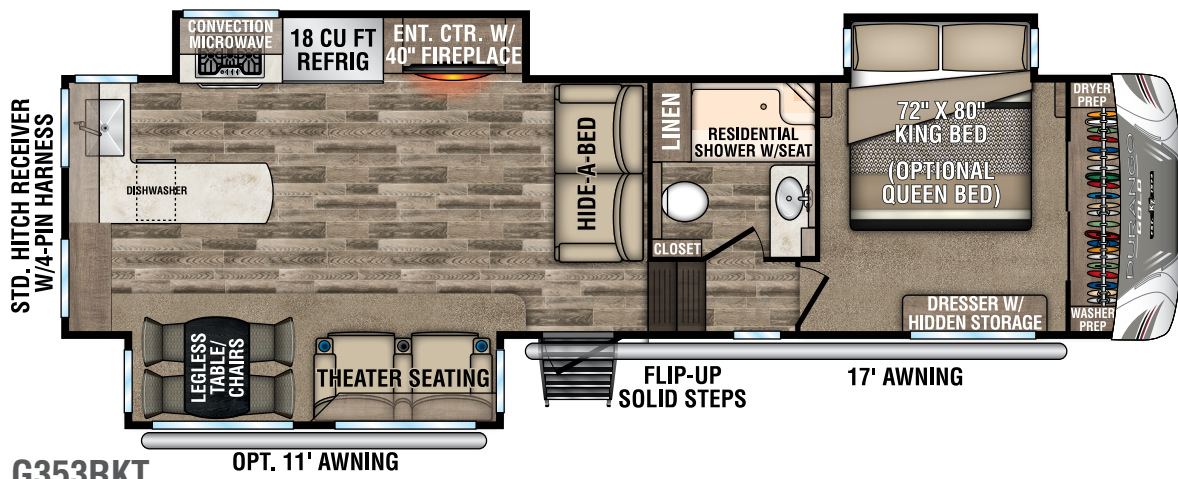


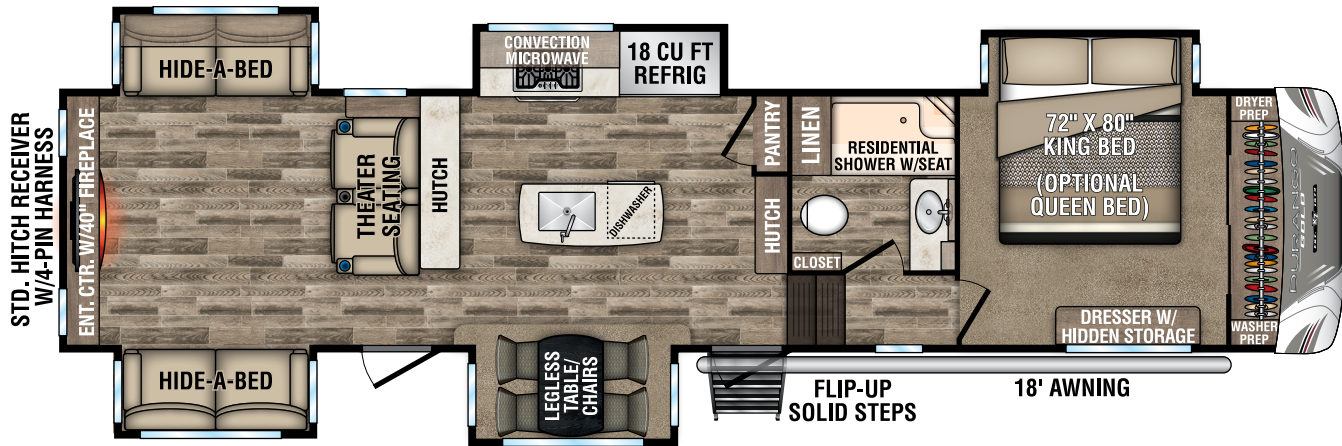
Fifth Wheels	G353RKT	G356RLT	G366FBT	G380FLF	G381REF	G382MBQ	G384RLT	G385FLT
UVW (Unloaded Vehicle Weight)*	11,090	11,480	11,470	12,580	12,700	13,330	12,250	12,860
Dry Hitch Weight*	2,130	2,350	2,240	2,250	2,200	2,120	2,530	2,320
Dry Axle Weight*	8,960	9,130	9,230	10,330	10,500	11,210	9,720	10,540
NCC (Net Carrying Capacity)	2,910	3,020	3,030	2,415	2,295	2,270	2,745	2,740
GVWR	14,000	14,500	14,500	14,995	14,995	15,600	14,995	15,600
Interior Height	76"	76"	76"	78"	76"	76"	76"	78"
Exterior Height w/ A/C	13' 4"	13' 4"	13' 4"	13' 6"	13' 4"	13' 4"	13' 4"	13' 6"
Exterior Width	101"	101"	101"	101"	101"	101"	101"	101"
Exterior Length**	35' 6"	36' 4"	39' 10"	39' 11"	40' 11"	40' 4"	39' 10"	41' 10"
Refrigerator (cu. feet)	18	18	18	18	18	18	18	18
Water Heater Cap. (gal. G/E w/DSI)	12	12	12	12	12	12	12	12
Fresh Water Cap. (gal.) [Including Water Heater Capacity]	67	67	67	67	67	67	67	67
Waste Water Cap. (gal.)	53	53	53	53	53	53	53	40
Gray Water Cap. (gal.)	93	93	53	53	93	93	93	53
1/2 Bath Cap. (gal.)	N/A	N/A	53	N/A	N/A	N/A	N/A	53***
LP Gas Cap. (lbs.)	60	60	60	60	60	60	60	60
Furnace BTUs (1,000s)	35	35	35	35	35	35	35	35
Tire Size	16"	16"	16"	16"	16"	16"	16"	16"
Awning	17'/11' opt.	16'/11' opt.	18'/11' opt.	18'	18'	20'/11' opt.	11'/17' opt.	18'

*This weight reflects the rolling average unit weight for each model. Your trailer weight will vary according to optional equipment.

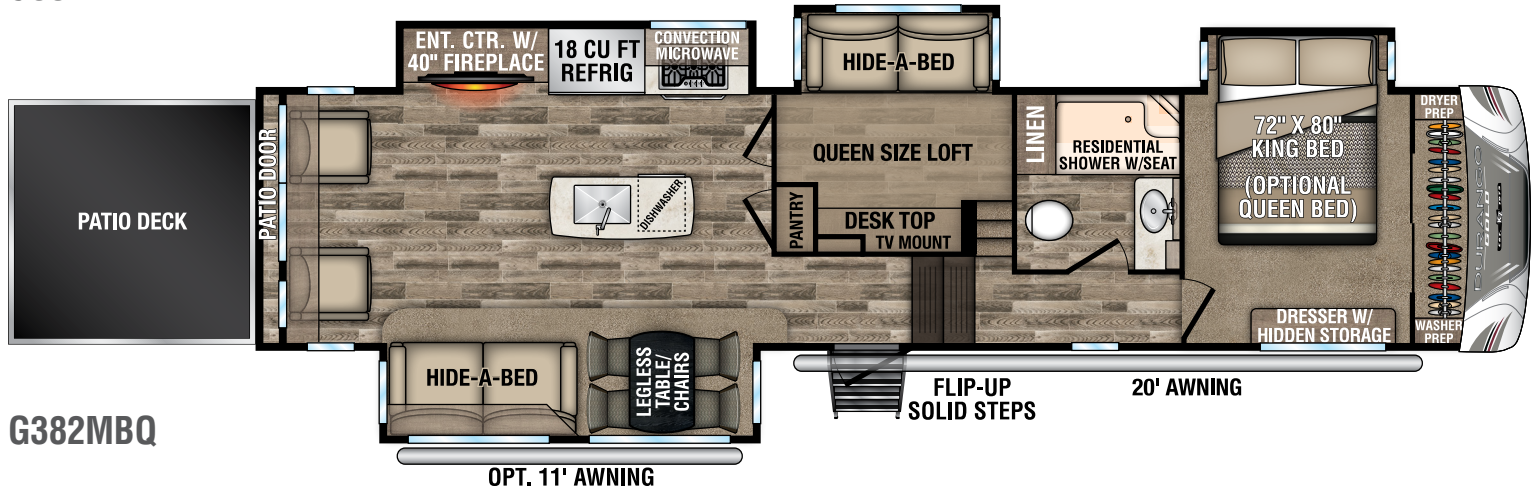
**Exterior length is measured from center of hitch pin to rear wall.

***Also includes kitchen

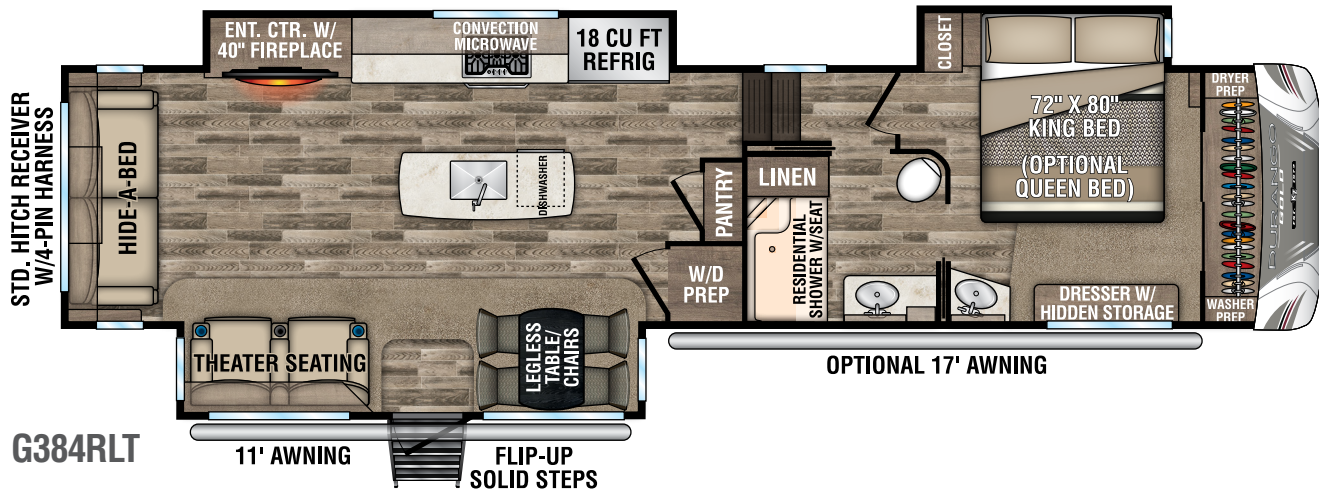




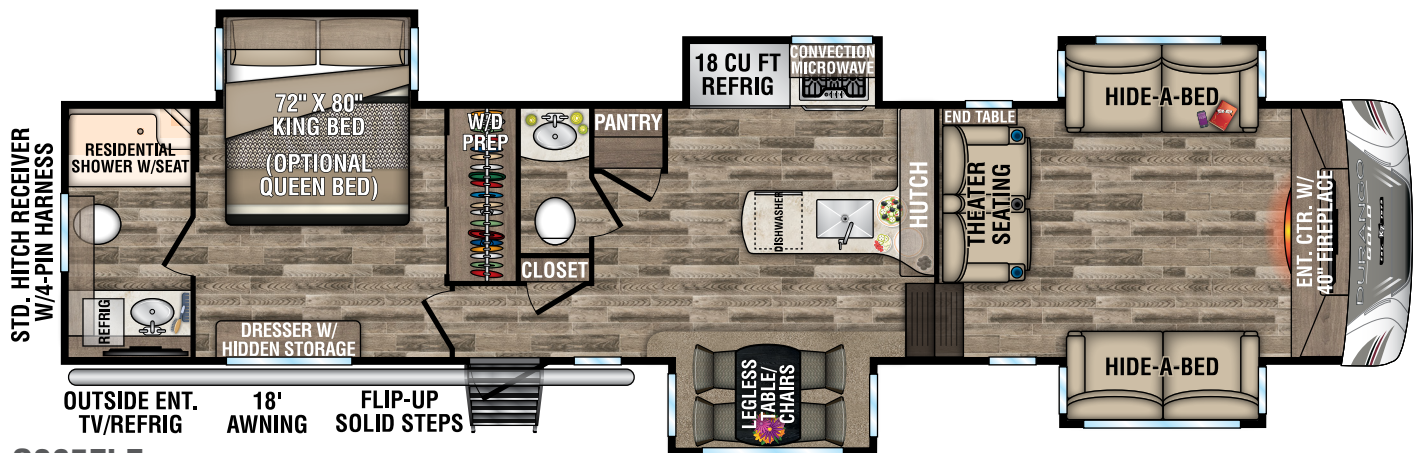
G381REF



G382MBQ



G384RLT



G385FLF

CONSTRUCTION FEATURES

- 101" Wide-Body Construction
- 6-Sided 100% Aluminum Frame
- Extra-Reinforced Heavy-Duty Front Fiberglass Cap
- Radius Front Cap (for increased turning radius on short bed trucks)
- 2" x 3" Welded Aluminum Fore & Aft Floor Joists
- 2" x 2" Welded Aluminum Sidewall Framing
- 5" Welded Aluminum Roof Trusses
- LCI® Hydraulic Slide System w/Selector Valves
- Steel Powder Coated I-Beam w/Drop-Frame Pass-Thru Storage (offering 160-180 CU FT, F/P specific)
- Lamilux® High-Gloss Fiberglass
- All-Weather Insulation Package (roof, floor, ceiling, endcaps & tanks to R-38)
- R-11 2" Sidewalls (w/EGS metal backing strips to hold all int. cabinets)
- One-Piece ABS Slideroom Bottoms; Slideroom Floors Insulated to R-24
- Walk-On Superflex® TPO Roof Membrane
- 45 Degree Aluminum Roof Edge
- Fully-Vented Attic System
- 3/8" Roof Decking
- 5/8" Tongue & Groove, Screwed & Glued Plywood Floor Decking
- Full Drop-Frame Aluminum Skirt on Doorside
- Pex® In-Floor Heated Waterlines & Kitchen Gray Pipes (all waterlines & drainlines are located above all insulation)
- Fully Heated & Enclosed Underbelly
- Double Insulated & Heated Holding Tanks (R-38 above & below tanks)

EXTERIOR FEATURES

- 7,000 LB Dexter® Axles w/Self-Adjusting Brakes & Height Adjusting Hangers
- 8-Lug Heavy-Duty Aluminum Rims w/16" G-Range Radial Tires
- 100% Exterior LED Running Lights & Taillights
- Electric Awning w/Light Strip
- Propane Bottles on Same Side of Coach for Easy Access (2 x 30 LB each)
- Sealed Battery Storage Compartment on Side of Coach (no battery boxes required)
- Dual Front Baggage Doors
- Slam Latch Baggage Doors w/Dual Locks
- Partially Painted Front Cap w/LED Accent Lights
- Frameless Windows
- 3" x 14" In-Floor Straight Line Heating System w/35,000 BTU Furnace
- 12 GAL Gas/Electric Hot Water Heater
- LED Docking Light & Sewer Hookup Light
- Swing-Away Assist Grab Handle
- Underneath Spare Tire w/Hoist

- Roof Ladder
- Deluxe Heated Water Convenience Center (incl. black tank flush, power fresh tank water fill, winterizing system, outside shower & dry camping water siphon system)
- Fully-Finished, Heated & Sealed Basement Storage Compartment
- Pre-Wire for Exterior TV

LIVING ROOM/KITCHEN FEATURES

- Residential-Size Pullout Trashcan in Kitchen
- Pullout Spice Rack (most models)
- Dual Pullout Pots & Pans Drawers under Refrigerator & Stove (where available)
- Removable Silverware Tray
- Storage Shelf under Kitchen Sink
- All Kitchen OH Cabinets have Shelf
- Heavy-Duty 100 LB Drawer Glides on Every Drawer
- Baltic Birch Drawer Boxes
- LED-Lighted Kitchen Cabinet Toe Kicks (most models)
- Large Dining Table w/Pullout Leaf & 2 Storage Seat Chairs & 2 Folding Chairs
- Kitchen Window (most models)
- Hidden Cabinet Door Hinges
- 5" Cabinet Hardware
- 3/8" Re-Bond Carpet Pad w/22 OZ Residential Carpet
- XL Toggle Light Switches
- Power Vent Fan in Second Bath (366FBT & 385FLF)
- All LED Ceiling & Cabinet Lights w/Multiple On/Off Switches

BATHROOM/BEDROOM FEATURES

- Residential One-Piece Fiberglass Shower Stall w/Built-In Seat & Glass Doors
- Shower Skylight
- XL Solid Surface Bath Vanity w/Stainless Steel Sink
- Porcelain Foot-Flush Toilet
- All LED Lights in Bed & Bath w/Multiple Switches
- Heavy-Duty 100 LB Drawer Glides on all Drawers
- Extra-Wide Bed & Bath Hallway (most models)
- Pocket Door from Hall to Bath (most models)
- Bath Towel Bar & Towel Loop (where applicable)
- 12V Fan
- XL Bath Linen Closet
- XL Deep Bedroom Walk-In Closet
- Dual Washer & Dryer Prep
- XL Under-Bed Storage
- Luxurious Bedspread & Pillow Shams

OPTIONS (EXTERIOR)

- Dual Pane Windows (frameless)
- Wireless Observation Backup Camera System

- "Off the Grid" Solar Package*
- Flex-Air Pin Box
- 2nd LED Lighted Power Awning (G353RKT, G356RLT, G366FBT, G382MBQ, G384RLT)
- Generator Prep
- 5.5KW LP Onan Generator (requires prep)
- Slideout Cover Package (triple slides)
- Slideout Cover Package (quad slides)
- Slideout Cover Package (five slides)
- Heat Pumps on Both A/Cs

OPTIONS (INTERIOR)

- House Residential Refrigerator w/1200W Inverter (18 CU FT) IPO 18 CU FT Gas/Electric Refrigerator (N/A CSA option)
 - Power Vent Fan in Bathroom
 - Denver Trek Queen Pillowtop Mattress 60" x 80"
 - Theater Seating IPO Hide-A-Bed (G382)
- *Cannot get House Residential Refrigerator w/"Off the Grid" Solar Package*

KZ ADVANTAGE PACKAGE (MANDATORY OPTION)

EXTERIOR

- 6-Point Hydraulic Auto Leveling
- Polar White High Gloss Gelcoat Exterior Fiberglass
- Painted Fiberglass Front Cap
- 6-Sided Aluminum Framing
- Flip-Up Entry Steps (main entry)
- 50 AMP Service
- (2) 15K Ducted A/Cs w/Quiet Cool Ducting System
- 5/8" T&G Plywood Floor
- Key-Alike for Baggage & Entry Doors
- Friction Hinge Entry Door
- Shade Prep & Screenshot Feature on Entry Door
- Large Folding Grab Handle
- Undermount Spare Tire
- Trail-Air Rota Flex Pin Box
- Equa-Flex® Suspension
- Nitrogen-Filled Tires
- Battery Disconnect
- Black Tank Flush
- Backup Camera Prep
- Roof-Mounted Solar Prep
- All Weather Insulation Package (heated, insulated & enclosed underbelly plus foil in floor, roof, front, rear)
- 2" Towing Receiver Hitch w/4 Pin Wire Harness Connection (3,000 lb tow rating & 300 lb hitch rating)
- Roof Ladder
- Fully-Vented Attic System w/2 Attic Vents

INTERIOR

- Maple Glazed Cabinetry
- Glazed Solid Hardwood Slideout Fascia
- Solid Surface Countertops w/Deep

Undermount Stainless Steel Kitchen Sink w/Sink Cover

- Chef's Appliance Package (2-piece SS gas cooktop w/built in oven & 30" convection microwave)
- SS Dishwasher (N/A G380)
- Central Vac System w/Attachments
- Power Vent Fan in Main Area
- Theater Seating w/Powered Recliner, Heat & Massage Features
- Tri-Fold Sleeper Sofa
- Solid Hardwood Dinette Table (legless) w/4 Chairs
- (3) Motion Sensor Lights (entry, closet, basement)
- 40" Wideview Fireplace
- 50" LED TV
- Multiple Media Stereo w/DVD/Bluetooth & 3 Zone Speaker Controls
- (2) 6.5" Interior Speakers
- 12V Dual USB Charging Station
- Dual Day/Night Roller Shades
- Porcelain Foot-Flush Toilet
- Stainless Steel Oval Bathroom Sink
- Plywood Bed Base
- Denver Trek King Pillowtop Mattress 72" x 80"
- 32" Bedroom LED TV
- 7' Tall Main Slide Ceiling Height

KZ CONVENIENCE PACKAGE (MANDATORY OPTION)

EXTERIOR

- 7" MyRV® One Touch Control Panel (monitors tank levels & battery levels, controls slide rooms, leveling system, awnings, inside/outside lighting)
- Power Awning w/LED Light Strip
- 16" G-Range Tires w/Aluminum Wheels
- Magnetic Catches for Baggage Doors
- Directional HDTV Antenna
- LED Lights in Exterior Speakers

INTERIOR

- Residential-Grade Linoleum
- 18 CU FT Gas/Electric Refrigerator w/ Temperature Controls
- Stainless Steel Residential Kitchen Faucet w/Pulldown Sprayer
- Surfex Wood Step in FW Hallway
- Dark Accent Trim on Corners/Entry Doors

BONUS FEATURES

- 2-Year Limited Warranty (see flyer)
- Lightest high-profile, wide body, luxury fifth wheels in the industry (average weight is 12,000 LBS)
- KZ has received the Dealer Satisfaction Index Award for 18 years
- KZ's 47 years of stable, dedicated manufacturing experience, coupled with its predominantly Amish workforce, heritage and commitment to superb quality, allow us to produce the best value luxury fifth wheel available.



985 N 900 W • Shipshewana, IN 46565
E-mail kz@kz-rv.com • www.kz-rv.com

Due to continual research and advances, manufacturer reserves the right to change specifications, design, price and equipment without notice, and assumes no responsibility for any error in this literature. Some items shown are not included as standard or optional equipment. ©2018KZ | 12/10/18 | 25M