

# **SPORTSMEN<sup>LE</sup>**

**TRAVEL TRAILERS**







## SPORTSMEN<sup>LE</sup>

Family adventures are all the more memorable in the Sportsmen LE. These durable travel trailers are built to withstand the rigors of family camping, yet loaded with comforts. With a large choice of floorplans and optional configurations, we're sure to have the perfect match for you.

After a day of fun, the comfortably furnished interior welcomes you home with room to relax. Generous slide-outs for expanded living space, beautifully workable kitchens, and plenty of storage space create a homey environment.



There's room for the entire crew in this kids bunkhouse! Dual bunks that each include a window allow for excellent ventilation. On the opposite side, a flip-up hinge bunk above and jiffy sofa below double as sleeping space at night and seating during the day, along with a rear bench seat.





332BHLE | French Roast décor



220RDLE | French Roast décor

The large U-dinette serves dinner with a view. Large panoramic windows offer excellent cross ventilation.

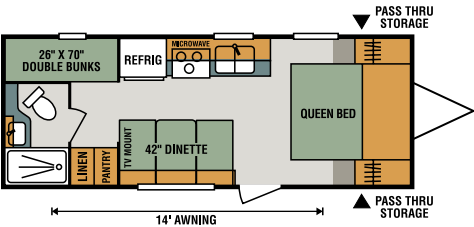
Even our smaller floorplans feature homelike kitchens with full-size appliances, such as a 6.3 cubic foot refrigerator, 3-burner cooktop with range hood, and microwave; plus, plenty of counter and storage space.



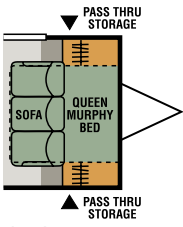
220RDLE | French Roast décor



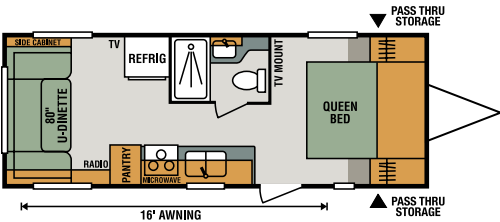
TRAVEL TRAILERS



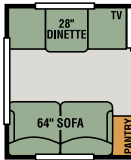
210BHLE



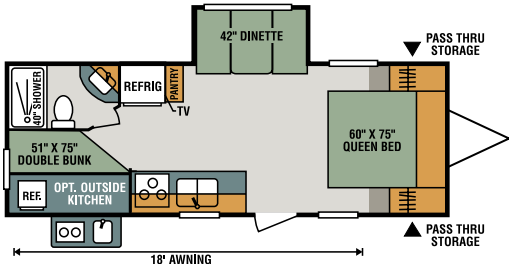
210BHLE  
Murphy Bed Option  
(patent pending)



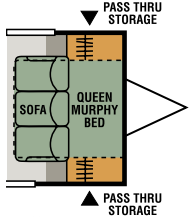
220RDLE



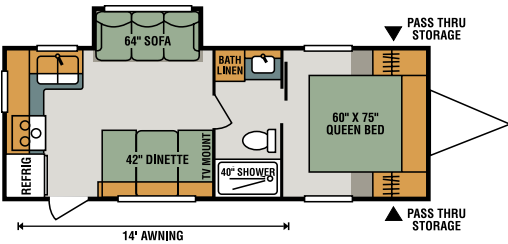
220RDLE  
Option



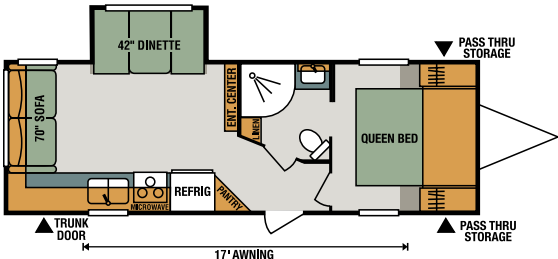
231BHLE



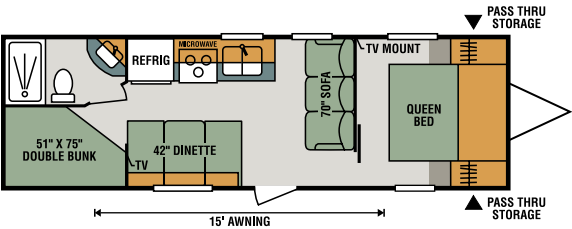
231BHLE  
Murphy Bed Option  
(patent pending)



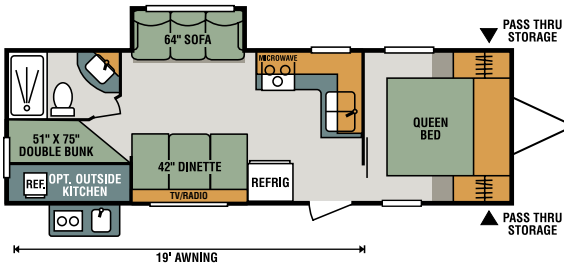
231RKLE



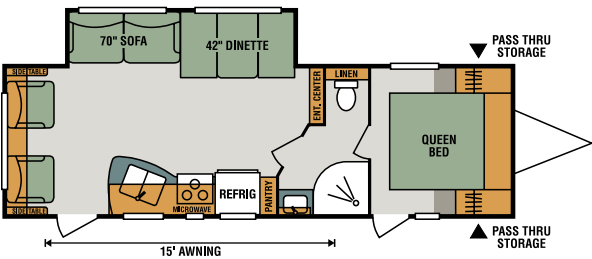
241RLLE



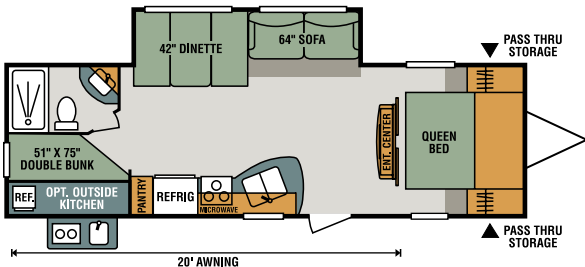
260BHLE



261BHLE

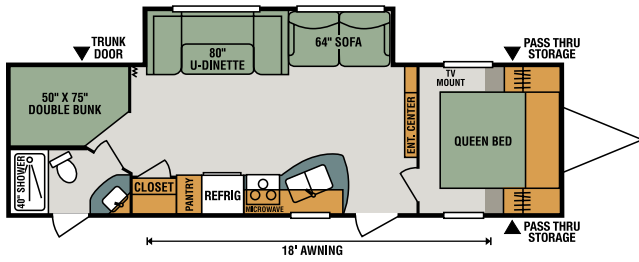


261RLLE

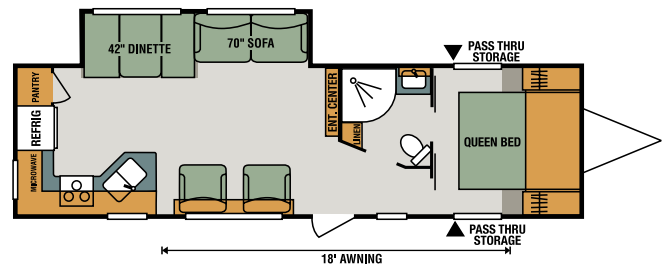


271BHLE

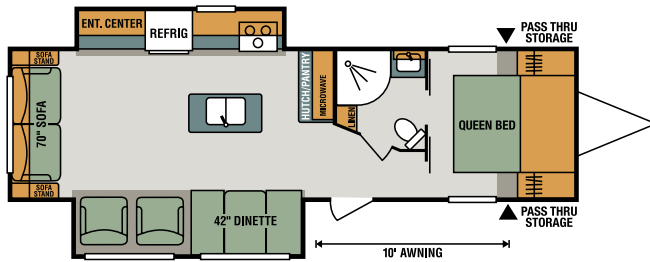




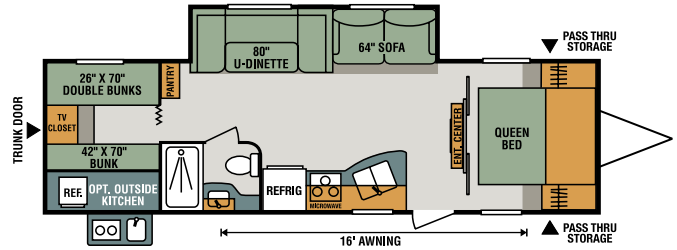
291BHLE



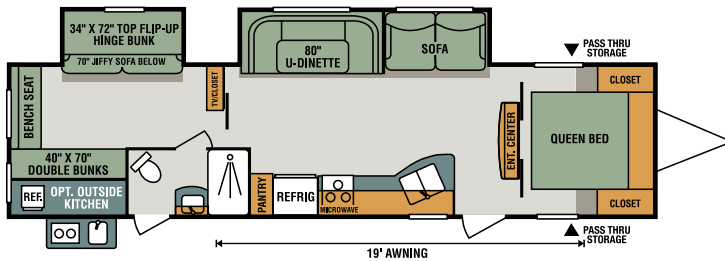
291RKLE



292RLLE **NEW**



301BHLE



332BHLE



Sleep tight in the master bedroom's queen size bed topped with a reversible quilted comforter. Personal mirrored side closets add function with an overhead mantle for style.

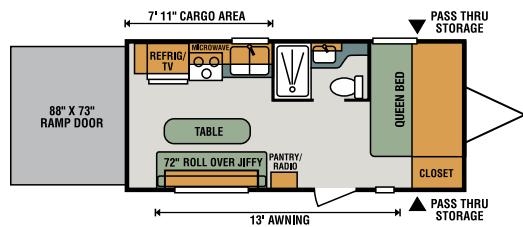
Travel Trailers	210BHLE	220RDLE	231BHLE	231RKLE	241RLLE	260BHLE	261BHLE	261RLLE	271BHLE	291BHLE	291RKLE	292RLLE	301BHLE	332BHLE
UVW (Unloaded Vehicle Weight)*	4,330	4,320	4,628	4,575	5,230	4,710	5,550	5,410	5,290	6,020	6,330	6,610	6,100	7,350
Dry Hitch Weight*	500	530	579	502	620	600	600	670	710	670	635	810	630	860
Dry Axle Weight*	3,830	3,790	4,049	4,073	4,610	4,110	4,950	4,740	4,580	5,350	5,695	5,800	5,470	6,490
NCC (Net Carrying Capacity)	1,670	1,680	1,372	1,425	1,770	2,290	1,450	1,590	1,710	1,980	1,670	1,390	1,900	1,450
GVWR	6,000	6,000	6,000	6,000	7,000	7,000	7,000	7,000	7,000	8,000	8,000	8,000	8,000	8,800
Interior Height	78"	78"	78"	78"	78"	78"	78"	78"	78"	78"	78"	78"	78"	78"
Exterior Height w/ A/C	10' 6"	10' 6"	10' 6"	10' 6"	10' 10"	10' 8"	10' 8"	10' 7"	10' 7"	10' 8"	10' 8"	10' 8"	10' 8"	10' 8"
Exterior Width	96"	96"	96"	96"	96"	96"	96"	96"	96"	96"	96"	96"	96"	96"
Exterior Length	25'	26' 2"	27' 5"	27' 5"	28' 11"	30' 6"	30' 2"	30' 8"	31' 3"	33' 2"	33' 2"	33' 9"	32' 8"	36' 10"
Refrigerator (cu. feet)	6	6	6	6	6	6	6	6	6	6	6	6	6	6
Water Heater Cap. (gal. G/E w/DSI)	6	6	6	6	6	6	6	6	6	6	6	6	6	6
Fresh Water Cap. (gal.)	38	38	38	38	38	38	38	38	38	38	38	38	38	38
Waste Water Cap. (gal.)	32	32	32	32	32	32	32	32	32	32	32	32	32	32
Gray Water Cap. (gal.)	32	32	32	64	32	32	32	32	32	32	64	32	32	32
LP Gas Cap. (lbs.)	40	40	40	40	40	40	40	40	40	40	40	40	40	40
Furnace BTUs (1,000s)	20	20	20	30	30	30	30	30	30	30	30	30	30	30
Tire Size	14"	14"	14"	14"	14"	14"	14"	14"	14"	15"	15"	15"	15"	15"
Awning	14'	16'	18'	14'	17'	15'	19'	15'	20'	18'	18'	10'	16'	19'

\*This weight reflects the rolling average unit weight for each model. Your trailer weight will vary according to optional equipment.





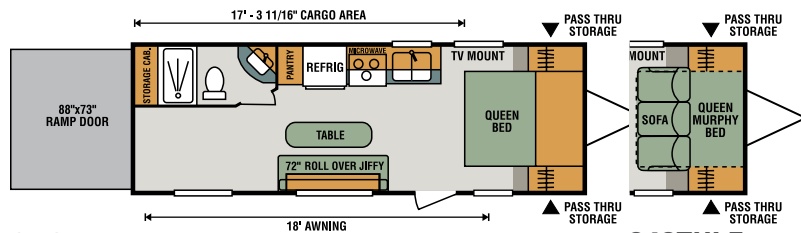
## TRAVEL TRAILER TOY HAULERS



190THLE

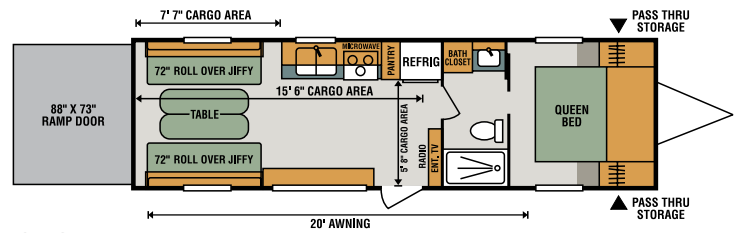
When you have toys to bring along, the Sportsmen LE Toy Hauler accommodates your lifestyle with all the same quality living features that double as cargo area for easy transport.

Unload the toys and the flexible cargo area converts into spacious living quarters with a free standing table and roll-over sofas that fold down for extra sleeping space at night.



240THLE

240THLE  
Murphy Bed Option  
(patent pending)



270THLE

### Toy Haulers

	190THLE	240THLE	270THLE
UVW (Unloaded Vehicle Weight)*	4,075	4,710	5,470
Dry Hitch Weight*	515	750	955
Dry Axle Weight*	3,560	3,960	4,515
NCC (Net Carrying Capacity)	2,925	2,290	3,330
GVWR	7,000	7,000	8,800
Interior Height	78"	78"	78"
Exterior Height w/ A/C	10' 8"	10' 8"	10' 8"
Exterior Width	96"	96"	96"
Exterior Length	21' 7"	26' 9"	30' 1"
Refrigerator (cu. feet)	6	6	6
Water Heater Cap. (gal. G/E w/DSI)	6	6	6
Fresh Water Cap. (gal.)	38	38	38
Waste Water Cap. (gal.)	32	32	32
Gray Water Cap. (gal.)	32	32	32
LP Gas Cap. (lbs.)	40	40	40
Furnace BTUs (1,000s)	20	20	25
Tire Size	14"	14"	14"
Awning	13'	18'	20'

\*This weight reflects the rolling average unit weight for each model. Your trailer weight will vary according to optional equipment.



# SPORTSMEN LE

## travel trailers & travel trailer toy haulers



### Standards

- K-Z Exclusive Tough Shield .030 Exterior Metal
- 1-Piece Seamless Roof w/SuperFlex® Roofing Material
- 3/8" Fully Walk-On Roof Decking
- Radius Truss Roof Rafters
- Awning w/Drip Rail & Spouts
- R-7 Insulation
- Radius Entry Door
- Extra-Large Radius Baggage Doors
- Tinted Windows
- Diamond Plate Rock Guard
- Rear Bumper w/Sewer Hose Storage
- (2) 20# LP Bottles
- 30 AMP Service
- Cable Hookup
- Digital TV Antenna w/Booster
- 13,500 BTU A/C
- Water Heater Bypass Kit
- 3-Burner Cooktop
- Range Hood w/12V Light & Exhaust Fan
- Microwave w/Turntable
- Acrylic Sink w/High-Rise Faucet
- Large Overhead Cabinets
- Roller Ball Bearing Drawer Guides
- LED Interior Lighting
- Linoleum Throughout
- Mini Blinds
- Monitor Panel
- Power Vent in Bath
- Reversible Quilted Comforter
- Built-In Medicine Cabinet w/Mirror in Bath
- Shower Surround

### Options

- Color-Infused Ivory Exterior Fiberglass
- 15,000 BTU A/C IPO 13,500 BTU A/C
- 50 AMP Service w/2nd A/C Prep
- 2nd A/C (13,500 BTU)

- Oven
- 10 CU FT 12V Residential Refrigerator IPO 6.3 CU FT Gas/Electric Refrigerator (N/A 190TH)
- 39" LED TV (241RL, 271BH, 291BH, 291RK, 301BH, 332BH, 270TH)
- 32" LED TV (231RK, 260BH, 261BH, 282BH)
- 24" LED TV (210BH, 220RD, 231BH, 190TH, 240TH)
- Bedroom LED TV w/inside/outside bracket
- F/S Dinette Table w/4 Chairs IPO Dinette
- Wireless Backup Camera System – Observation
- Roof Ladder
- Outside Kitchen (231BH, 261BH, 271BH, 301BH, 332BH)
- Bumper-Mount Grill
- Climate PKG (heated, enclosed & insulated underbelly)
- Flip-Down 71" Storage Rack (N/A on toy haulers)
- Murphy Bed w/Sofa (patent pending) (210BH, 231BH, 240TH)
- Rear Dinette & Sofa (220RDLE)
- Sink Cover
- Aluminum Wheels
- Retractable Screen Wall (toy haulers only)
- Motion Security Sensor for Smart Arm Awning
- Wind Sensor for Smart Arm Awning

### K-Z Advantage Package (mandatory option)

#### Exterior

- 2-Toned Exterior Metal
- Friction-Hinged Entry Door
- Key-Alike Program for Entry & Baggage Doors
- Large Folding Grab Handle
- Power Tongue Jack
- Power Awning w/LED Light Strip
- Exterior Speakers
- Spare Tire & Carrier
- Nitrogen-Filled Tires
- (4) Stabilizer Jacks

- LP Bottle Cover
- Backup Camera Prep
- Solar Prep

#### Interior

- Jackknife Sofa w/Center Console & Bolster Arms
- 12V Dual USB Port in LR
- Bed Storage System
- Plywood Bed Base w/Gas Struts
- Upper Bunk Windows (select F/Ps)
- Seamless Countertops w/Deep Under-Mount Sink
- Foot-Flush Toilet
- (2) 6 ½" Interior Speakers
- Multi-Media Stereo w/DVD, Bluetooth & NFC Wireless Connectivity
- Blue LED Light Strip above Slideroom (main LR only)

### K-Z Convenience Package (mandatory option)

#### Exterior

- Smart Arm Awning w/Exterior Controls
- Magnetic Baggage Door Catches
- LED Light & Battery Disconnect in Storage Area
- Omnidirectional HDTV Antenna
- Black Tank Flush
- LED Lights in Exterior Speakers

#### Interior

- Armstrong® ToughGuard® Linoleum
- 6.3 CU FT Gas/Electric 12V Refrigerator
- Stainless Steel Residential Kitchen Faucet
- Interior Control Switches on OH End Cabinet
- Dark Accent Trim on Corners/Entry Doors
- Electrical Outlet in Bunk Area

*French Roast décor*



# INTERIOR & EXTERIOR FEATURES



Store all your extra gear in the cavernous under-bed storage system, with gas struts for effortless, easy-lift access.

The convenient full length pantry has adjustable shelves for useful storage of canned goods and foodstuffs.



Floorplans with the optional outside kitchen stations allow your family to enjoy the ambience of outdoor cooking without the mess of campfire prep and cleanup.



Our key-alike entry system offers not only the convenience of one lock for all applications, but security as well. Now, other campers with standard industry keys can't open your storage compartments or entry doors!

The optional rear storage system offers additional trip storage for firewood, bikes and anything you don't care to store in your unit, and is rated for up to 150 pounds. (N/A on toy haulers)



Exterior storage areas are sizable and easy to clean, and include extra-large radius doors with magnetic catches.

Dealer:

**RVIA**



985 N 900 W • Shipshewana, IN 46565  
E-mail [kz@kz-rv.com](mailto:kz@kz-rv.com) • [www.kz-rv.com](http://www.kz-rv.com)

*Due to continual research and advances, manufacturer reserves the right to change specifications, design, price and equipment without notice, and assumes no responsibility for any error in this literature. Some items shown are not included as standard or optional equipment. ©2018KZ | 02/01/18 | 30M*