

ESCAPE

ULTRA LIGHTWEIGHT TRAVEL TRAILERS





ESCAPE MINI

The Escape Mini offers your family the ability to renew your lives, recharge your batteries and rediscover your inner compass. It's lightweight and affordable, comfortable and versatile, and offered as hardside and expandable. The perfect Escape from reality? You bet!



Innovative features save space while catering to your needs. The dinette is utilized during the day by folding up the bed extension. At night, the extension folds down to create a large, comfortable bed.

There's nothing "mini" about this pleasantly practical kitchen. It includes all the appliances you need for meals on the road, including a deep sink large enough for filling pots and pitchers.



ESCAPE

With a choice of hardside, expandable, or toy hauler designs, these comfortable, versatile units are built for adventure. Their strong, lightweight construction holds up to the demands of the road while enhancing the needs of family camping.

Spacious interiors offer comfortable living space and sleeping quarters along with generous storage space to accommodate the whole family.

The kids will love these bunk beds with plush pile mattresses and underneath storage for toys. Mom will love the efficient kitchen complete with cooktop stove, refrigerator, microwave, and plenty of storage.



ESCAPE MINI

ultra lightweight travel trailers



Standards

- Tinted Windows
- R-7 Insulation
- Diamond Plate Rock Guard
- Rear Bumper w/Sewer Hose Storage
- Self-Adjust Electric Brakes
- Radial Tires
- 20# LP Bottle
- 30AMP Detachable Power Cord
- Cable Hookup
- City Water Fill
- Digital TV Antenna
- 12V Converter w/Charger
- Monitor Panel
- Linoleum Throughout
- 2-Burner Cooktop
- Amish-Crafted Rustic Maple Cabinets
- Rail-Style Cabinet Doors w/Modern Handles
- Mesh Storage Pockets
- Overhead Cabinets
- LED Interior Lighting
- Shower & Toilet
- Evergreen Queen Mattress w/Reversible Comforter
- Deep Single Sink (large enough for filling pots, pans & pitchers)
- Easy to Tow (no mirror extenders w/our narrow body design)
- Wheels are mounted on the outside of the exterior walls

Options

- 13,500 BTU A/C Low Profile IPO Maxx-Air® Power Fan
- 24" LED TV w/Inside/Outside Bracket

- Wireless Backup Camera System – Observation
- Front Window (required, N/A on M181KST)
- Motion Security Sensor for Smart Arm Awning
- Wind Sensor for Smart Arm Awning

Off-Road Package

- 15" Mud Tires
- Extra Ground Clearance
- Electronically-Controlled Heated Holding Tank
- Double Entry Step

K-Z Advantage Package (mandatory)

Exterior

- Aerodynamic Front & Rear Profiles w/82" Interior Walls
- 5/8" Tongue & Groove Plywood
- Power Awning w/LED Light Strip
- Key Alike Program for Baggage & Entry Doors
- One-piece Seamless Fiberglass Roof w/Aluminum Rafters
- Max Air Multi-Speed Power Fan (N/A w/A/C option)
- A/C Prep
- Electric Tongue Jack
- Aluminum Rims
- Folding Grab Handle
- Exterior Speakers
- Spare Tire & Carrier
- (4) Scissor-Style Stabilizer Jacks
- Outside Shower
- Black Tank Flush
- Solar Prep
- Backup Camera Prep
- Nitrogen-Filled Tires

Interior

- 20,000 BTU Furnace
- 6 GAL LP/Electric DSI Water Heater
- Reversible Comforter
- 4.2 CU FT Refrigerator
- Convection Microwave
- Shower Surround w/Fabric Shower Curtain
- Plywood Bed Base
- Seamless Countertops
- (2) 6 1/2" Interior Speakers
- Digital Media Stereo w/Bluetooth & 12V Dual USB Ports

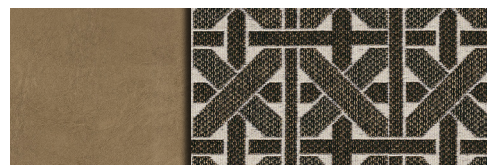
K-Z Convenience Package (mandatory)

Exterior

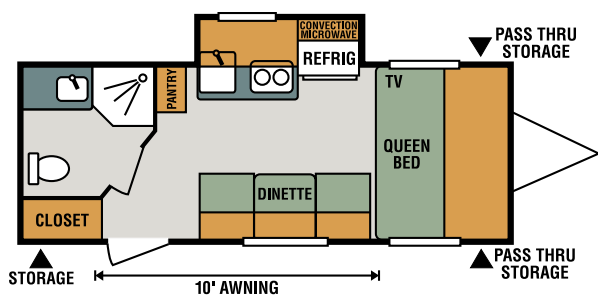
- Smart Arm Awning w/Exterior Controls
- Friction Hinge Entry Door
- Omnidirectional HDTV Antenna

Interior

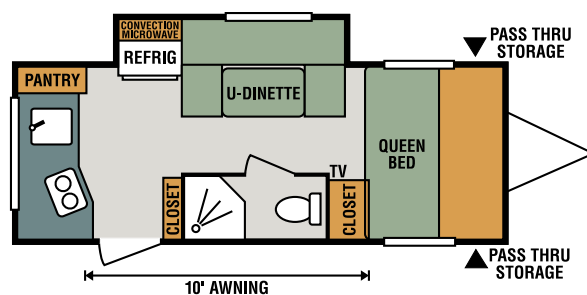
- Armstrong ToughGuard® Linoleum
- Rail-Style Cabinet Doors
- Interior Control Switches on OH End Cabinet



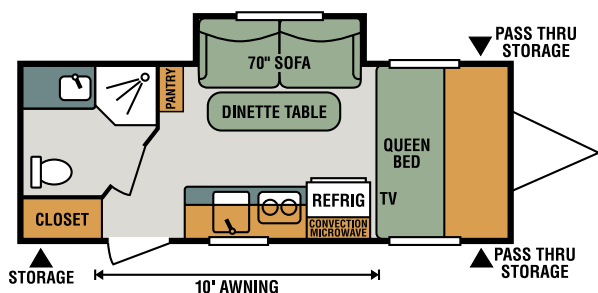
Fossil décor



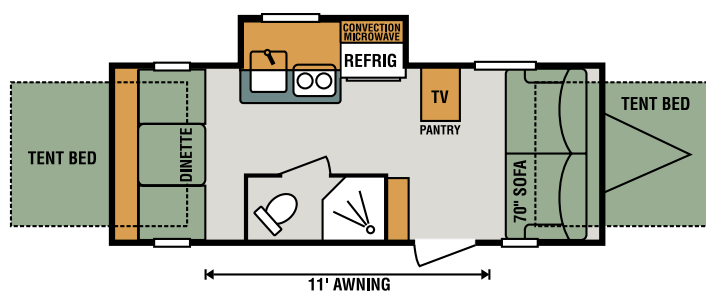
M181KS



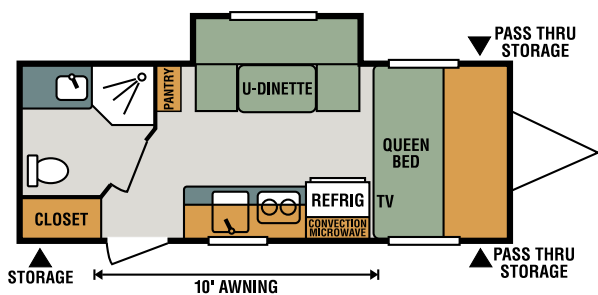
M181RK



M181SS



M181KST



M181UD

Travel Trailers	M181KS	M181RK	M181SS	M181KST	M181UD
UVW (Unloaded Vehicle Weight)*	2,828	2,888	2,848	2,948	2,878
Dry Hitch Weight*	300	310	310	320	310
Dry Axle Weight*	2,528	2,528	2,538	2,628	2,568
NCC (Net Carrying Capacity)	672	612	652	552	622
GVWR	3,500	3,500	3,500	3,500	3,500
Interior Height	82"	82"	82"	82"	82"
Exterior Height	105"	105"	105"	105"	105"
Exterior Width	96"	96"	96"	96"	96"
Exterior Length	20' 9"	20' 9"	20' 9"	20' 9"	20' 9"
Refrigerator (cu. feet)	4	4	4	4	4
Water Heater Cap. (gal. G/E w/DSI)	6	6	6	6	6
Fresh Water Cap. (gal.)	30	30	30	30	30
Waste Water Cap. (gal.)	30	30	30	30	30
Gray Water Cap. (gal.)	32	32	32	32	32
LP Gas Cap. (lbs.)	20	20	20	20	20
Furnace BTUs (1,000s)	20	20	20	20	20
Tire Size	14"	14"	14"	14"	14"
Awning	10'	10'	10'	11'	10'

*This weight reflects the rolling average unit weight for each model. Your trailer weight will vary according to optional equipment.

ESCAPE

ultra lightweight travel trailers



Standards

- Alum-a-Tough® Roofing w/12-Year Limited Warranty
- Tinted Windows
- R-7 Insulation
- Diamond Plate Rock Guard
- Rear Bumper w/Sewer Hose Storage
- Self-Adjust Electric Brakes
- Radial Tires
- 20# LP Bottle
- Cable Hookup
- City Water Fill
- Digital TV Antenna
- 12V Converter w/Charger
- 6 GAL LP DSI Water Heater
- Monitor Panel
- Linoleum Throughout
- 2-Burner Cooktop
- Microwave
- 4 CU FT LP/Electric Refrigerator (E160RBT, E161RB, E180QB, E180TH, E181RB, E191BH)
- 6.3 CU FT Double-Door Refrigerator (E180RBT, E191SS, E201RB, E231BH)
- Amish-Crafted Rustic Maple Cabinets
- Rail-Style Cabinet Doors w/Modern Handles
- Overhead Cabinets
- LED Interior Lighting
- Shower & Toilet

Options

- 13,500 BTU A/C Low Pro (required on E180RBT, E191SS, E201RB, E231BH)
- U-Dinette IPO STD Dinette (E161RB, E181RB, E191BH)

- 6.3 CU FT Refrigerator (required on E180RBT, E191SS, E201RB, E231BH ... must option roof A/C)
- 24" LED TV w/Inside/Outside Bracket (E180QB, E181RB, E191BH)
- (2) Aluminum Wheels (N/A E180RBT, E201RB, E231BH)
- (4) Aluminum Wheels (E180RBT, E201RB, E231BH)
- Murphy Bed w/Sofa (patent pending) (E201RB)
- Wireless Backup Camera System - Observation
- Front Window (required, N/A on E160RBT, E180RBT)
- Bedspread (N/A E160RBT, E180RBT)
- Motion Security Sensor for Smart Arm Awning
- Wind Sensor for Smart Arm Awning

Off-Road Package

- Aluminum Rims w/15" Mud Tires
- Extra Ground Clearance
- Electronically-Controlled Heated Holding Tank
- Double Entry Step (select models)

K-Z Advantage Package (mandatory option)

Exterior

- New Front Profile w/78" Interior Walls
- 5/8" Tongue & Groove Plywood Floor
- 8,000 BTU A/C
- Power Awning w/LED Light Strip
- Key-Alike Program for Baggage & Entry Doors
- Aqualon Edge® Tent Material
- Folding Grab Handle
- Exterior Speakers

- Spare Tire & Carrier
- (4) Scissor-Style Stabilizer Jacks
- Solar Prep
- Backup Camera Prep
- Nitrogen-Filled Tires

Interior

- 20,000 BTU Furnace
- Seamless Countertops
- Plywood Bed Base
- (2) 6 1/2" Interior Speakers
- Digital Media Stereo w/Bluetooth & 12V Dual USB Ports

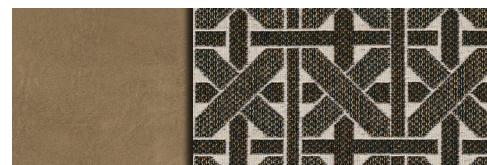
K-Z Convenience Package (mandatory option)

Exterior

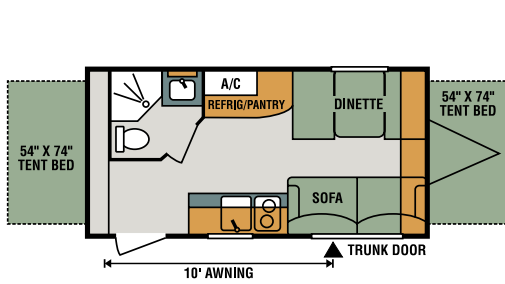
- Smart Arm Awning w/Exterior Controls
- Friction Hinge Entry Door
- Double entry steps (select models)
- Omnidirectional HDTV Antenna

Interior

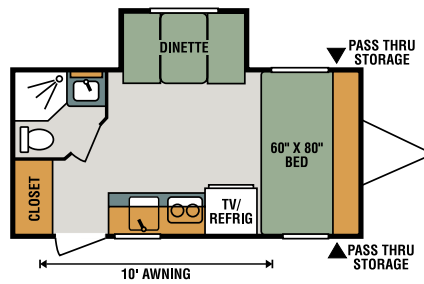
- Armstrong ToughGuard® Linoleum
- Rail-Style Cabinet Doors
- Interior Control Switches on OH End Cabinet



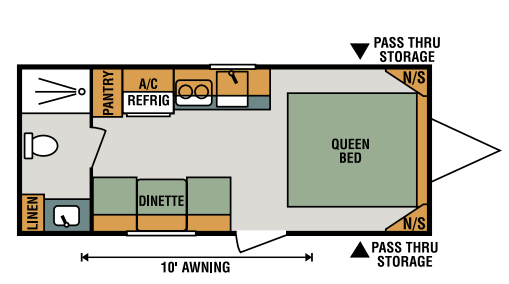
Fossil décor



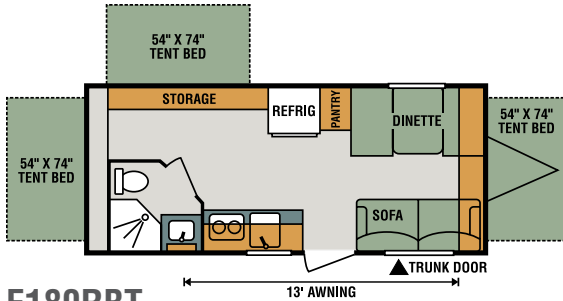
E160RBT



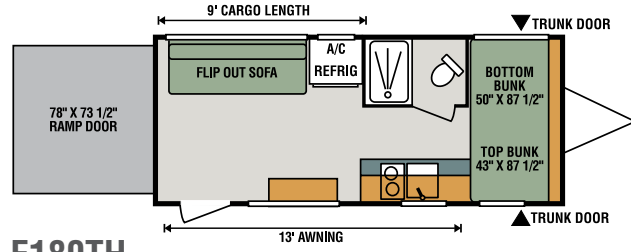
E161RB



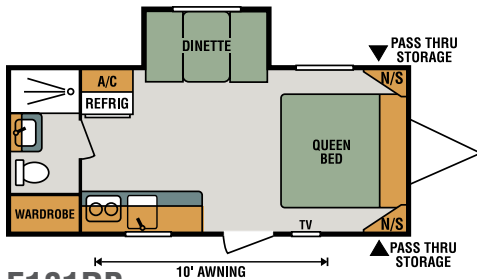
E180QB



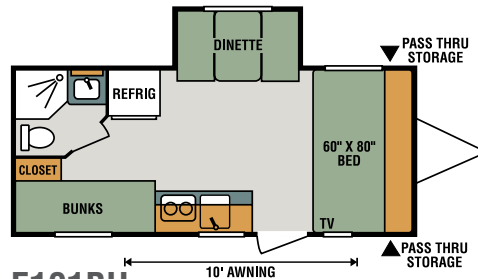
E180RBT



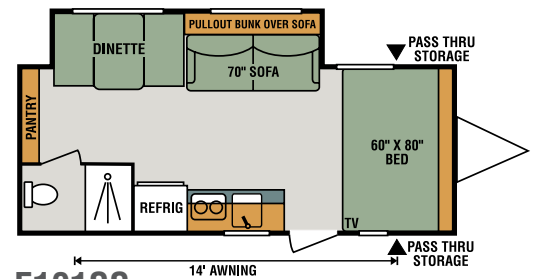
E180TH



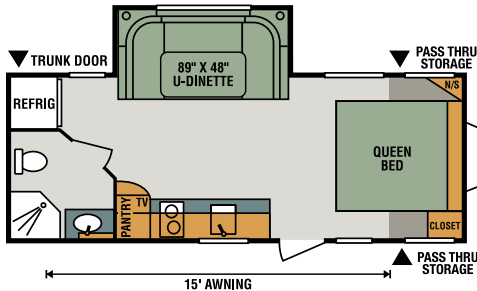
E181RB



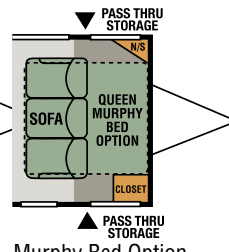
E191BH



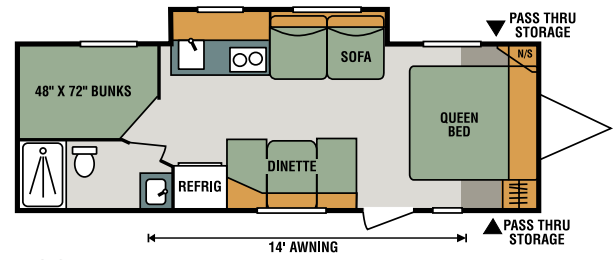
E191SS



E201RB



Murphy Bed Option
(patent pending)



E231BH

Travel Trailers	E160RBT	E161RB	E180QB	E180RBT	E180TH	E181RB	E191BH	E191SS	E201RB	E231BH
UVW (Unloaded Vehicle Weight)*	2,690	2,735	2,940	3,220	3,290	3,099	3,233	3,530	3,530	3,760
Dry Hitch Weight*	350	385	490	420	460	445	446	490	370	540
Dry Axle Weight*	2,340	2,350	2,450	2,800	2,830	2,654	2,787	3,040	3,160	3,220
NCC (Net Carrying Capacity)	810	765	560	1,280	1,710	901	767	1,470	970	740
GVWR	3,500	3,500	3,500	4,500	5,000	4,000	4,000	5,000	4,500	4,800
Interior Height	78"	78"	78"	78"	78"	78"	78"	78"	78"	78"
Exterior Height w/o A/C (unless noted)**	107"	112"	107"	118"	107"	112"	112"	118"	118"	118"
Exterior Width	90"	90"	90"	90"	90"	90"	90"	90"	90"	90"
Exterior Length	18' 10"	19' 8"	21' 10"	21' 3"	21' 7"	21' 11"	21' 11"	23' 8"	23' 10"	27' 3"
Refrigerator (cu. feet)	4	4	4	6	4	4	4	6	6	6
Water Heater Cap. (gal. LP w/DSI)	6	6	6	6	6	6	6	6	6	6
Fresh Water Cap. (gal.)	20	20	20	20	38	20	20	38	20	20
Waste Water Cap. (gal.)	24	32	32	24	32	32	32	32	31	24
Gray Water Cap. (gal.)	32	32	32	32	32	32	32	32	31	31
LP Gas Cap. (lbs.)	20	20	20	20	20	20	20	20	20	20
Furnace BTUs (1,000s)	20	20	20	20	20	20	20	20	20	20
Tire Size	14"	14"	14"	13"	15"	15"	15"	15"	13"	13"
Awning	10'	10'	10'	13'	13'	10'	10'	14'	15'	14'

*This weight reflects the rolling average unit weight for each model. Your trailer weight will vary according to optional equipment. **This exterior height is *with A/C*.

INTERIOR & EXTERIOR FEATURES



Enjoy your meals or play a game at the versatile dinette that offers thick reversible cushions and additional underseat storage. When nighttime falls, it handily converts into a snug, sizeable bed.



When on the road, the bathroom is too important to compromise. That's why we designed plenty of elbow room into our ample bathrooms with large showers, lavatories, and foot flush toilet.



Escape expandables feature sturdy self-supporting bunkends covered with durable heat resistant, waterproof Aqualon Edge® tent material that can withstand years of hard use. And, Aqualon Edge is backed by a 7-year warranty on the tent material.



Our key-alike entry system offers not only the convenience of one lock for all applications, but security as well. Now, other campers with standard industry keys can't open your storage compartments or entry doors!



RVIA



985 N 900 W • Shipshewana, IN 46565
E-mail kz@kz-rv.com •

Dealer:

Due to continual research and advances, manufacturer reserves the right to change specifications, design, price and equipment without notice, and assumes no responsibility for any error in this literature. Some items shown are not included as standard or optional equipment. ©2018KZ | 03/21/18 | 25M