

VENOM

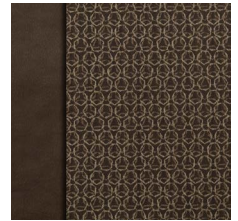
Luxury Fifth Wheel Toy Haulers



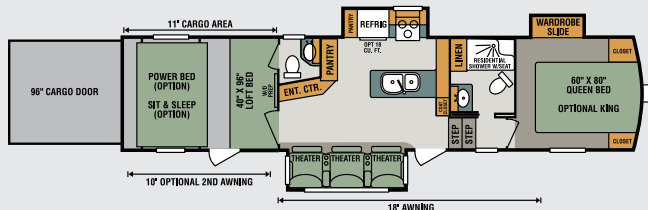
2017 Décor



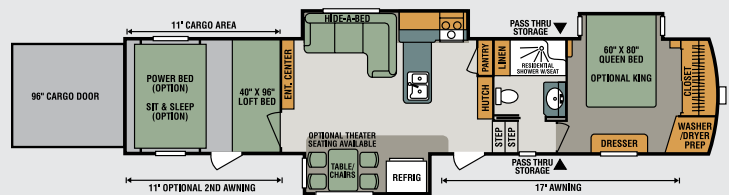
Nighthawk



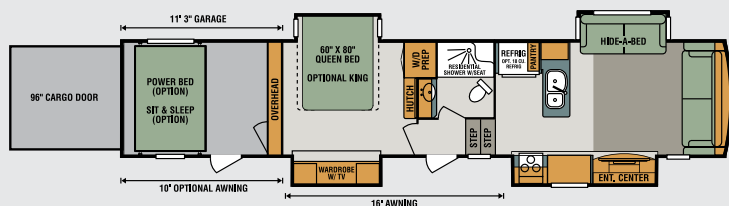
Sandstorm



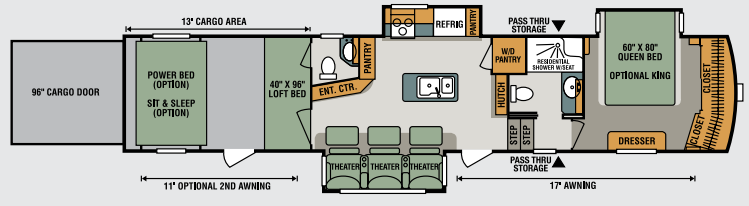
V3411TK UVW 13,300 • Dry Hitch Wt. 2,520
NCC 2,700 • Length 37' 8"



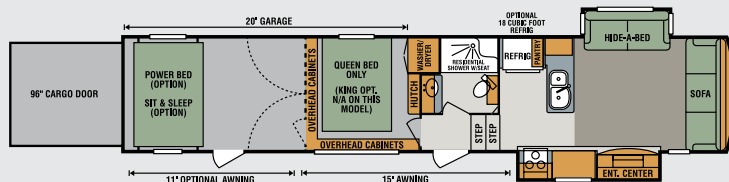
V3911TK UVW 14,050 • Dry Hitch Wt. 3,070
NCC 4,950 • Length 42' 7"



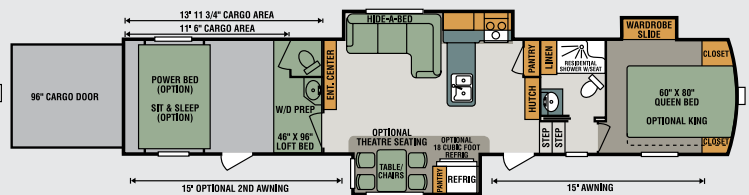
V4011QK UVW 14,530 • Dry Hitch Wt. 2,750
NCC 4,470 • Length 42' 9"



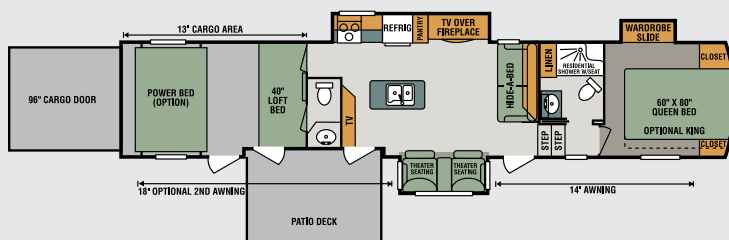
V4013TK UVW 14,760 • Dry Hitch Wt. 3,340
NCC 4,240 • Length 43' 4"



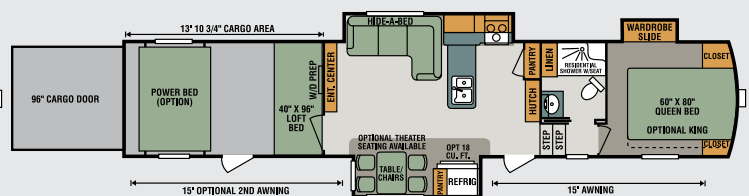
V4020DQ UVW 13,620 • Dry Hitch Wt. 2,750
NCC 5,380 • Length 43' 5"



V4111TK UVW 14,300 • Dry Hitch Wt. 3,160
NCC 4,700 • Length 43' 4"



V4113TK UVW 15,160 • Dry Hitch Wt. 2,820
NCC 3,840 • Length 43' 7"



V4114TK UVW 14,400 • Dry Hitch Wt. 3,130
NCC 4,600 • Length 43' 4"

Standards and Options

Construction

- 101" Wide Body Construction
- 6-Sided aluminum frame, including welded aluminum fore & aft floor joists, sidewall framing, & roof trusses
- Extra Reinforced Heavy-Duty Front Fiberglass Cap
- Radius Aerodynamic Front Cap
- 2" x 3" Fully-Welded Aluminum Floor Framing
- 2" x 2" Fully-Welded Aluminum Sidewall Framing
- 5" Welded Aluminum Roof Trusses
- Lippert® Hydraulic Slide System w/ Selector Valves
- 12" Powder-Coated Steel I-Beam w/ Drop Frame (160 SQ FT Pass-Thru Storage)
- Lamilux 4000® High-Gloss Fiberglass Sidewalls
- All Weather Insulation Package to R38 (roof, floor, garage floor end caps, holding tanks)
- Double Insulated & Heated Holding Tanks (R38 above & below tanks)
- Additional Outside Frame-to-Wall Floor Insulation
- R11 2" Sidewalls (w/EGS metal backing strips)
- One-Piece ABS Slideroom Bottoms
- Superflex® Roof Membrane (TPO/ Rubber Hybrid, 12-year warranty)
- 45-Degree Radius Aluminum Roof Edge
- Fully Vented Attic System
- 3/8" Fully Walk-On Roof Decking
- 5/8" Tongue & Groove Screwed & Glued Plywood Floor Decking
- Metal Skirt (covering the doorside frame)
- Pex® In-Floor Heated Waterlines & Kitchen Gray Pipes (all waterlines & drains located above all insulation)
- Fully-Enclosed & Heated Underbelly w/Direct-Heated Holding Tanks

Exterior

- 7,000 LB Dexter® Axles w/ Self Adjusting Brakes & Height Adjusting Hangers
- 8-Lug Heavy-Duty Aluminum Rims w/16" E-Range Radial Tires
- EZ Flex® Rubberized Suspension
- Aluminum 4-Step Entry w/LED Light
- Roto-Flex® Hitch Pin
- 100% Exterior LED Running & Taillights
- Carefree® Electric Awning w/LED Light Bar (w/interior illuminated reminder switch)
- Propane Bottles (2 x 30 lbs.) on Same Side for Easy Access
- Sealed Battery Storage Compartment (no battery boxes required)
- Triple Front Slam-Latch Baggage Doors

- Side Slam-Latch Baggage Doors w/Gas Struts & Dual Locks
- 50 AMP Service w/Detachable Marine Power Cord
- Fully Painted Front Cap w/LED Accent Lights
- Frameless Windows
- 15,000 BTU Ducted Roof AC w/Quiet Cool (prewired for OPT ducted 15,000 BTU bedroom AC w/quiet cool)
- Wired & Framed for OPT 3rd 15,000 BTU AC
- 35,000 BTU Furnace w/3" x 14" In-Floor Straight Line Heating System
- 12 GAL Gas/Electric Hot Water Heater
- LED Entry Door Floodlight
- (2) LED Ramp Door Lights
- LED Docking & Sewer Hookup Lights
- Sewer Hose Storage Tube
- Dual Swing-Away Assist Grab Handle
- Under-Frame Spare Tire w/Hoist
- Roof Ladder
- Heated Water Convenience Center (incl. black tank flush, power fresh tank water fill, winterizing system, outside shower, & dry-camping water siphon)
- Fully-Finished Heated & Sealed Basement Storage Compartment
- Camp Table & Patio Chairs Storage Compartment
- Heated & Enclosed Dump Valves
- Battery Disconnect
- Satellite Pre-Wire in Convenience Center & Roof
- Outside Speakers
- Generator Prep w/Surge Protector & Dedicated 30 GAL Fuel Tank
- 40 GAL Fuel Station w/Electric Pump

Exterior Options

- 6-Point Hydraulic Auto Leveling System
- 2nd Lighted Power Garage Entry Door Awning
- Dual Pane Frameless Windows
- Onan® 5500 Gas Generator
- 15,000 BTU Bedroom AC
- 15,000 BTU Garage AC w/Load Management System
- Slideout Cover Package
- Goodyear G-14 G-Rated Tires
- Backup Camera
- "Off the Grid" Package (includes 160W Solar Panel, Inverter and Monitor)
- Trail Air Flex Air Upgraded Pinbox

Kitchen

- Solid Surface Countertops, Flush-Mount Stove Covers & Sink Covers w/Large Handholds
- Large Residential Double Bowl Stainless Steel Sink

- High-Arching, Pullout, Residential Faucet
- 30" Microwave above Range
- U.S. Made Large Dining Table w/ Removable Leaf & 2 Heavy-Duty Chairs (2 additional folding chairs V3911TK)
- Power Vent Kitchen Fan w/Wall Controls
- XL Residential Size Pullout Trashcan (where applicable)
- Removable Silverware Tray
- Under-Sink Storage Shelf
- OH Cabinets incl. Shelf & Extra-Tall Slide Lips
- Hidden Cabinet Door Hinges
- 5" Stainless Steel Cabinet Hardware
- Baltic Birch Drawer Boxes
- Heavy-Duty 100 LB Drawer Glides
- LED Kitchen Cabinet Toe-Kicks (where applicable)
- Kitchen Window (most models)

Interior

- Full MyRV® Control System (monitors tank levels & battery levels, controls slide rooms, leveling system, awnings, inside/outside lighting)
- 22 OZ Residential Carpet w/ 3/8" Re-bond Padding
- XL Ceiling Crown Molding
- Window Shades Throughout
- 100% LED Ceiling & Cabinet Lights w/Multiple On/Off Switches
- LED RGB Entertainment Lights
- Extra-Large Light Switches
- Faux Vinyl Soft Touch Ceiling
- Deluxe Residential-Style Furniture
- Removable Pedestal Tables in Front of Seating (based on model)
- 40" – 48" HD LED TV on Swing Arm w/Behind-TV Storage
- Residential Entertainment System w/Radio/Bluetooth/Sound Bar & Bass Subwoofer
- USB Charging Station & 12V Power Outlet
- Fireplace w/Remote

Interior Options

- Theater Seat IPO Free-Standing Table & Chairs (V3911TK, V4111TK, V4114TK)
- 18 CU FT 120V Residential Refrigerator w/1000W Inverter (N/A V3411TK, V4013TK, V4113TK)
- 18 CU FT 4-Door RV Refrigerator (LP/Electric)
- 30" OTR Convection Oven/ Microwave IPO OTR Microwave
- Power Vent Fan w/Wall Controls (bath, bedroom, garage)
- Day/Night Roller Shades
- Central Vacuum System

Bedroom

- XL Deep Closet w/Shoe Storage Rack (V3911TK, V4013TK)

- Dual Washer/Dryer Prep (stacked or side-by-side)
- XL Under-Bed Storage
- Luxurious Bedspread & Pillow Shams
- Flat Panel TV on Swing Arm
- 60" x 80" Queen-Size Upgraded Mattress

Bedroom Options

- 72" x 80" King Size Upgraded Mattress (N/A V4020DQ)

Bath

- Residential One-Piece FG Shower Stall w/Glass Doors & Built-In Seat
- Shower Skylight
- XL Solid Surface Bath Vanity w/Stainless Steel Sink
- Porcelain Foot-Flush Toilet
- XL Linen Cabinet
- XL Deep Closet w/Shoe Storage Rack (V3911TK & V4013TK)
- Extra-Wide Hallway & Pocket Door
- Power Vent w/Wall Switch
- Towel Bar & Towel Ring

Garage

- Roll-Down Screen Wall
- E-Track Tie-Down System
- Built-In Dovetail
- 24" Diamond Plate Wall Guards
- Garage Entry Door
- HD Flat Panel Garage TV on Swing Arm
- 12V Radio/DVD Player
- (2) Garage Ceiling Speakers
- Speaker On/Off Switches
- Zero Gravity Ramp Door with Easy Lift Assist

Garage Options

- HappiJac® Electric Bed & Rollover Sofa w/Table
- Ramp Door Patio w/Entry Steps & w/Electric Awning
- 3-Season Patio Door IPO Roll-Down Screen Wall
- Toy Lock
- Removable Edged Garage Carpet Kit 10' x 8'

Bonus Features

- 2-Year Limited Warranty (see flyer)
- One of the Lightest, High-Profile, Wide Body, Luxury Toy Hauler Fifth Wheels in the Industry
- K-Z has received the Dealer Satisfaction Index Award for 16 years
- K-Z's 44 years of stable, dedicated manufacturing experience, coupled with its predominant Amish workforce, heritage and commitment to superb quality, allow us to produce the lowest-priced luxury fifth wheel available.



985 N 900 W • Shipshewana, IN 46565
E-mail kz@kz-rv.com • www.kz-rv.com

Due to continual research and advances, manufacturer reserves the right to change specifications, design, price and equipment without notice, and assumes no responsibility for any error in this literature. Some items shown are not included as standard or optional equipment. ©2016KZ | 9/9/16 | 2.5M