

# SIDEWINDER®

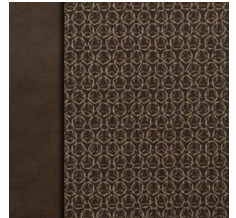
Fifth Wheel Toy Haulers



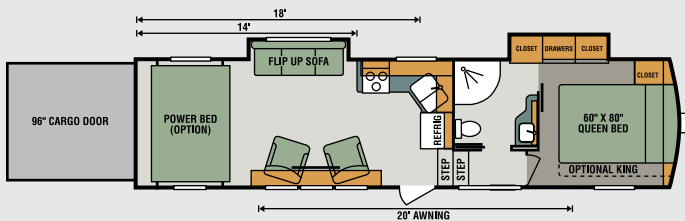
2017 Décor



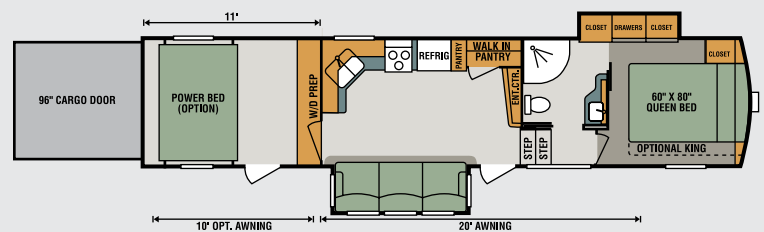
Nighthawk



Sandstorm

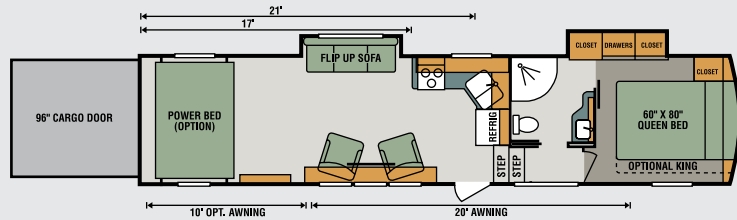


**3214DK** UVW 10,470 • Dry Hitch Wt. 2,780  
NCC 4,525 • Length 36' 9"

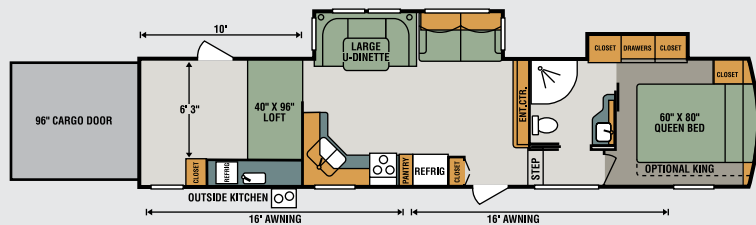


**3511DK** UVW 11,370 • Dry Hitch Wt. 2,390  
NCC 3,625 • Length 40' 1"

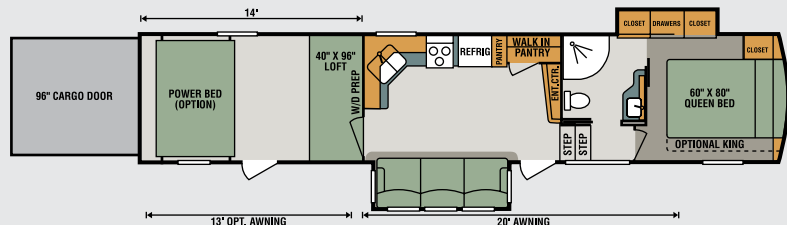
**3517DK**  
UVW TBD  
Dry Hitch Wt. TBD  
NCC TBD  
Length 37' 11"



**3610DK**  
UVW 11,640  
Dry Hitch Wt. 2,430  
NCC 3,355  
Length 40' 9"



**3814DK**  
UVW TBD  
Dry Hitch Wt. TBD  
NCC TBD  
Length 41' 4"



### Construction Features

- 101" Wide-Body Construction
- Extra-Reinforced, Heavy Duty, High-Gloss Front Cap
- Radius Aerodynamic Front Cap (provides better turning radius & increased fuel economy)
- 2" x 3" Fully Welded Aluminum Floor Joists
- 2" x 2" Fully Welded Aluminum Sidewall Framing
- Lamilux® 4000 High-Gloss F/G
- Double-Insulated & Heated Holding Tanks (R-38 above & below tanks)
- R-11 2" Sidewalls (w/EGS metal backing strips to hold up all interior cabinets)
- One-Piece ABS Slideroom Bottoms
- Superflex® Roof Membrane w/ 12-Year Limited Warranty (a hybrid between TPO & rubber)
- Fully Vented Attic System
- 3/8" Roof Decking (fully walkable)
- 5/8" Tongue & Groove, Screwed & Glued Plywood Floor Deck
- Pex® In-Floor Heated Waterlines & Kitchen Gray Pipes (all waterlines & drains are located above all insulation)
- Fully-Enclosed & Heated Underbelly w/Directly Heated Holding Tanks

### Construction Options

- All-Weather Insulation PKG (roof, floor, ceiling, garage floor, end caps & tanks to R-38)
- 6-Point Electric Leveling
- Power Rear Stabilizer Jacks

### Exterior Features

- 7,000# Dexter® Axles w/Auto-Adjusting Brakes
- 8-Lug Heavy-Duty Aluminum Rims w/16" E-Range Nitro-Filled Radial Tires
- EZ Flex® Rubberized Suspension
- 4-Step Entry
- 100% Exterior LED Running Lights, Tail Lights & Backup Lights

- Carefree® Electric Awning w/ Directional LED Light Bar at End of Awning
- Propane Bottles on Same Side of Coach for Easy Access
- Side Slam Latch Baggage Doors (where applicable) w/Magnet Catches for Full Access to Storage
- 50A Service w/Detachable Marine Power Cord
- 15,000 BTU Ducted Roof A/C
- 3" x 14" In-Floor Straight Line Heating System w/35,000 BTU Furnace
- 12 GAL Gas/Electric Hot Water Heater
- LED Floodlight by Entry Door & (2) LED Lights above Ramp Door
- LED Docking Light & Sewer Hookup Light
- Dual Swing-Away Assist Grab Handle
- Underneath Spare Tire w/Hoist
- Roof Ladder
- Heated Water Convenience Center (includes black tank flush, power fresh tank water fill, winterizing system, outside shower)
- Fully-Finished, Heated & Sealed Basement Storage Compartment (only available w/All-Weather Insulation PKG)
- Heated & Enclosed Dump Valves
- Battery Disconnect
- Satellite Pre-Wire in Both the Convenience Center & Roof
- Outside Speakers on their own switch
- Generator prep w/Surge Protector
- 30 GAL Fuel Station w/Electric Pump

### Exterior Options

- Roto-Flex® Upgraded Hitch Pin
- 2nd 15,000 BTU Air Conditioner
- 2nd Lighted Patio Awning (N/A on 3214DK)
- Onan® 5500 Gas Generator
- Dual-Pane Windows
- Slideout Cover PKG
- G-Range Tires
- Backup Camera
- "Off the Grid" PKG (includes

- 160W solar panel, inverter & monitor panel)
- Ramp Door Patio Rails
- Toy Lock

### Living Room/Kitchen Features

- Solid-Surface Countertops
- Large residential Double-Bowl Stainless Steel Sink
- Pull-Out Sprayer Faucet
- Built-In Silverware Drawer
- Storage Shelf under Kitchen Sink
- All Kitchen OH Cabinets have Shelf & Extra-Tall Slide Lips
- Heavy-Duty 100# Drawer Glides on Every Drawer
- Baltic Birch Drawer Boxes
- Decorative Lighting above Many Cabinets
- Window in Kitchen (in most models)
- 5" Stainless Steel Cabinet Hardware
- Window Shades Throughout
- 3/8" Re-Bond Carpet Pad w/22 OZ Residential Carpet
- Stainless Steel Appliances
- Extra-Large Light Switches
- Faux Leather Vinyl Soft-Touch Ceiling
- Ceiling Crown Molding
- 100% LED Ceiling & Cabinet Lights w/Multiple On/Off Switches
- Deluxe Residential-Style Furniture
- Living Room HD Flat Panel TV on Bracket (includes exterior mount)

### Living Room/Kitchen Options

- Solid-Surface Matching Sink Covers
- Power Vent Fan (location varies)
- 12 CU FT Refrigerator Upgrade (3511, 3610, 3814 only)
- Folding Table

### Garage/Ramp Area Features

- Pull-Down Screen Wall
- Multiple D-Rings to Tie Down Cargo
- Built-in Dovetail
- Garage Entry Door (model

- specific)
- (2) Garage Ceiling Speakers
- Outside Garage Speaker Switches

### Garage/Ramp Area Options

- 3-Season Patio Door IPO Screen Wall
- Removable, Edged Carpet Kit (10' x 8')
- Happijac® Electric Bed & Rollover Sofas w/Table

### Bathroom/Bedroom Features

- Large Radius Shower w/Glass Door Enclosure
- Skylight Over Shower
- Porcelain Foot-Flush Toilet
- Extra-Wide Hall (going up into bedroom & pocket door from hall into the bathroom – most models)
- Towel Bar in Bathroom
- Power Vent Fan in Bathroom
- Extra-Large Under-Bed Storage
- Luxurious Bedspread & Pillow Shams
- Padded Headboard w/Hidden Storage

### Bathroom/Bedroom Options

- HD Flat Panel TV
- King-Size Bed Upgrade
- Upgraded Mattress

### Bonus Features

- 2-year Limited Warranty (see flyer)
- One of the lightest weight high profile, wide body, luxury Toy Hauler fifth wheels in the industry
- KZ RV has won the coveted DSI award 16 years.
- KZ RV's 44 years of building experience, coupled with its stable and dedicated Amish workforce and commitment to superb quality and low overhead, allows us to produce the lowest-priced fully featured fifth wheel available.



985 N 900 W • Shipshewana, IN 46565  
E-mail [kz@kz-rv.com](mailto:kz@kz-rv.com) • [www.kz-rv.com](http://www.kz-rv.com)

*Due to continual research and advances, manufacturer reserves the right to change specifications, design, price and equipment without notice, and assumes no responsibility for any error in this literature. Some items shown are not included as standard or optional equipment. ©2016KZ | 9/9/16 | 2.5M*