

# VENOM

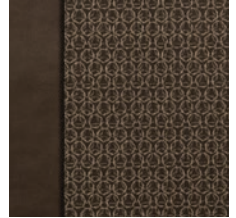
Luxury Fifth Wheel Toy Haulers



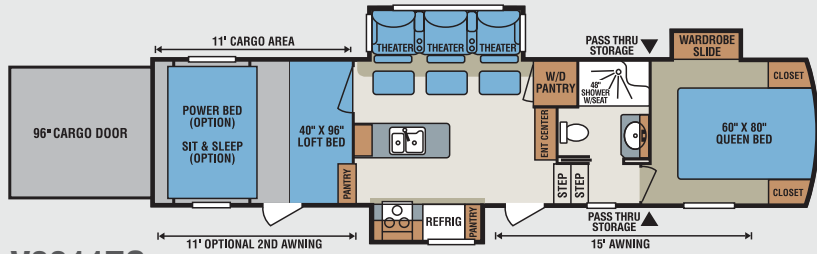
2016 Décor



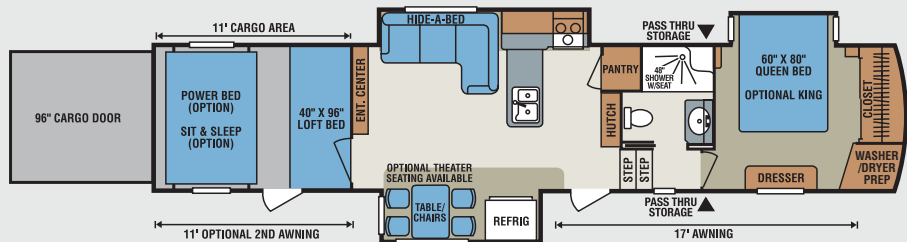
Nighthawk



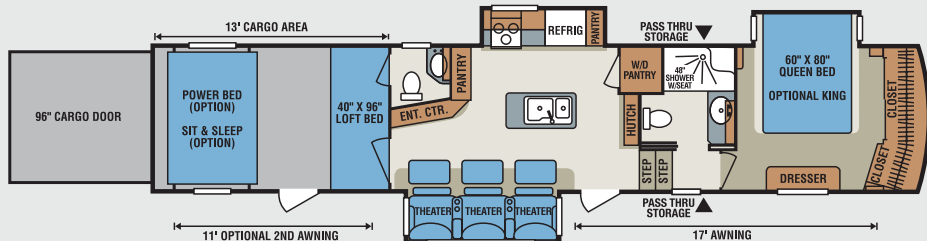
Sandstorm



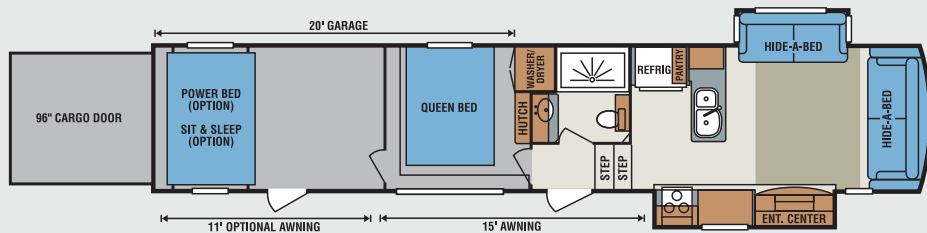
**V3311TQ** UVW 12,700 • Dry Hitch Wt. 2,490 • NCC 3,300 • Length 36' 11"



**V3911TK** UVW 14,050 • Dry Hitch Wt. 3,070 • NCC 4,950 • Length 42' 7"



**V4013TK** UVW 14,760 • Dry Hitch Wt. 3,340 • NCC 4,240 • Length 43' 4"



**V4020DQ** UVW 13,620 • Dry Hitch Wt. 2,750 • NCC 5,380 • Length 43' 5"

## Standards

### Construction

- 101" Wide Body Construction
- 6-Sided aluminum frame, including welded aluminum fore & aft floor joists, sidewall framing, & roof trusses
- Extra Reinforced Heavy-Duty Front Fiberglass Cap
- Radius Aerodynamic Front Cap
- 2" x 3" Fully-Welded Aluminum Floor Framing
- 2" x 2" Fully-Welded Aluminum Sidewall Framing
- 5" Welded Aluminum Roof Trusses
- Lippert® Hydraulic Slide System w/Selector Valves
- 12" Powder-Coated Steel I-Beam w/Drop Frame (160 SQ FT Pass-Thru Storage)
- Lamilux 4000® High-Gloss Fiberglass Sidewalls
- All Weather Insulation Package to R38 (roof, floor, garage floor end caps, holding tanks)
- Double Insulated & Heated Holding Tanks (R38 above & below tanks)
- Additional Outside Frame-to-Wall Floor Insulation
- R11 2" Sidewalls (w/EGS metal backing strips)
- One-Piece ABS Slideroom Bottoms (floors insulated to R24)
- Superflex® Roof Membrane (TPO/Rubber Hybrid, 12-year warranty)
- 45-Degree Radius Aluminum Roof Edge
- Fully Vented Attic System
- Additional Outside Frame-to-Wall Floor Insulation
- 3/8" Fully Walk-On Roof Decking
- 5/8" Tongue & Groove Screwed & Glued Plywood Floor Decking
- Metal Skirt (covering the doorside frame)
- Pex® In-Floor Heated Waterlines & Kitchen Gray Pipes (all waterlines & drains located above all insulation)
- Fully-Enclosed & Heated Underbelly w/Direct-Heated Holding Tanks

### Exterior

- 7,000 LB Dexter® Axles w/Auto Adjusting Brakes & Height Adjusting Hangers
- 8-Lug Heavy-Duty Aluminum Rims w/16" E-Range Radial Tires
- EZ Flex® Rubberized Suspension
- Aluminum 3-Step Entry w/LED Light
- Roto-Flex® Hitch Pin
- 100% Exterior LED Running & Taillights
- Carefree® Electric Awning w/LED Light Bar (w/interior illuminated reminder switch)
- Propane Bottles on Same Side for Easy Access
- Sealed Battery Storage Compartment (no battery boxes required)

- Triple Front Slam-Latch Baggage Doors
- Side Slam-Latch Baggage Doors w/Gas Struts & Dual Locks
- 50 AMP Service w/Detachable Marine Power Cord
- Fully Painted Front Cap w/LED Accent Lights
- Frameless Windows Throughout
- 15,000 BTU Ducted Roof AC w/Quiet Cool (prewired for OPT ducted 15,000 BTU bedroom AC w/quiet cool)
- Wired & Framed for OPT 3rd 15,000 BTU AC
- 35,000 BTU Furnace w/3" x 14" In-Floor Straight Line Heating System
- 12 GAL Gas/Electric Hot Water Heater
- 100% LED Exterior Lights
- Dual-Function Bug/Flood LED Entry Door Floodlight
- (2) LED Ramp Door Lights
- LED Docking & Sewer Hookup Lights
- Sewer Hose Storage Tube
- Dual Swing-Away Assist Grab Handle
- Under-Frame Spare Tire w/Hoist
- Roof Ladder
- Heated Water Convenience Center (incl. black tank flush, power fresh tank water fill, winterizing system, outside shower, & dry-camping water siphon)
- Fully-Finished Heated & Sealed Basement Storage Compartment
- Camp Table & Patio Chairs Storage Compartment
- Heated & Enclosed Dump Valves
- Battery Disconnect
- Satellite Pre-Wire in Convenience Center & Roof
- Outside Speakers
- Generator Prep w/Surge Protector & Dedicated 30 GAL Fuel Tank
- 40 GAL Fuel Station w/Electric Pump

### Exterior Options

- 6-Point Hydraulic Auto Leveling System
- 2nd Lighted Power Garage Entry Door Awning
- Dual Pane Frameless Windows
- Onan® 5500 Gas Generator
- 15,000 BTU Bedroom AC
- 15,000 BTU Garage AC w/Load Management System
- Slideout Cover Package
- Goodyear G-14 G-Rated Tires
- Backup Camera

### Kitchen

- Solid Surface Countertops, Flush-Mount Stove Covers & Sink Covers w/Large Handholds
- Large Residential 60/40 Stainless Steel Sink

- High-Arching, Pullout, Residential Metal Faucet
- 30" Microwave above Range
- U.S. Made Large Dining Table w/Removable Leaf & 2 Heavy-Duty Chairs (2 additional folding chairs 3911TK)
- Maxxair® Kitchen Fan w/Wall Controls
- XL Pullout Trashcan
- Built-In Silverware Tray
- Under-Sink Storage Shelf
- Adjustable Pantry Shelves (most models)
- OH Cabinets incl. Shelf & Extra-Tall Slide Lips
- Hidden Cabinet Door Hinges
- 4" Stainless Steel Cabinet Hardware
- Baltic Birch Drawer Boxes
- Heavy-Duty 100 LB Drawer Glides
- LED Kitchen Cabinet Toe-Kicks
- Kitchen Window (most models)

### Interior

- Full MyRV® Control System (monitors tank levels & battery levels, controls slide rooms, leveling system, awnings, inside/outside lighting)
- 22 OZ Residential Carpet w/ 3/8" Re-bond Padding
- XL Ceiling Crown Molding
- Wood Slat Window Shades Throughout
- 100% LED Ceiling & Cabinet Lights w/Multiple On/Off Switches
- LED Rope Ambient Lighting
- Extra-Large Light Switches
- Faux Vinyl Soft Touch Ceiling
- Deluxe Residential-Style Furniture
- Removable Pedestal Tables in Front of Seating (based on model)
- 40" – 48" HD LED TV on Swing Arm w/Behind-TV Storage
- Residential Entertainment System w/DVD/Radio/Bluetooth/Sound Bar & Bass Subwoofer
- USB Charging Station & 12V Power Outlet

### Interior Options

- Theater Seat IPO Free-Standing Table & Chairs (V3911TK)
- 18 CU FT 120V Residential Refrigerator w/1000W Inverter
- 18 CU FT 4-Door RV Refrigerator (LP/Electric)
- 30" OTR Convection Oven/Microwave IPO OTR Microwave
- Maxxair® Fan w/Wall Controls (bath, bedroom, garage)
- Dual Interior Roller Shades
- Fireplace w/Remote
- Central Vacuum System

### Bedroom

- XL Deep Closet w/Shoe Storage Rack (3911TK, 4013TK)

- Dual Washer/Dryer Prep (stacked or side-by-side)
- XL Under-Bed Storage
- Luxurious Bedspread & Pillow Shams
- 32" HD Flat Panel TV on Swing Arm (w/speakers)
- 60" x 80" Queen-Size Cotton Cloud® Memory Foam Mattress w/Gel Top

### Bedroom Options

- 72" x 80" King Size Cotton Cloud® Memory foam mattress w/Gel Top

### Bath

- 48" One-Piece FG Shower Stall w/ Glass Doors & Built-In Seat
- Shower Skylight
- XL Solid Surface Bath Vanity w/ Stainless Steel Sink
- Porcelain Foot-Flush Toilet
- XL Linen Cabinet
- XL Deep Closet w/Shoe Storage Rack (3911TK & 4013TK)
- Extra-Wide Hallway & Pocket Door
- Power Vent w/Wall Switch
- Towel Bar & Towel Ring

### Garage

- Roll-Down Screen Wall
- E-Track Tie-Down System
- Built-In Dovetail
- 24" Diamond Plate Wall Guards
- Garage Entry Door
- 32" HD Flat Panel Garage TV on Swing Arm
- 12V Radio/DVD Player
- (2) Garage Ceiling Speakers
- Speaker On/Off Switches

### Garage Options

- Happi-Jac Electric Bed & Rollover Sofa w/Table
- Ramp Door Patio w/Entry Steps & w/Electric Awning
- 3-Season Patio Door IPO Roll-Down Screen Wall
- Toy Lock
- Removable Edged Garage Carpet Kit

### Bonus Features

- 2-Year Limited Warranty (see flyer)
- One of the Lightest, High-Profile, Wide Body, Luxury Toy Hauler Fifth Wheels in the Industry
- Dealer Satisfaction Index Award Winner for 14 Years
- K-Z's 43 years of stable, dedicated manufacturing experience, coupled with its predominant Amish workforce, heritage and commitment to superb quality, allow us to produce the lowest-priced luxury fifth wheel available.

