



Space<sup>®</sup>



Luxury Lightweight Travel Trailers





*Spree - A thoroughly original high-end travel trailer from K-Z!  
True luxury in every sense of the word.*

**3281K**  
twilight  
décor





Fresh from our design department, the 2016 Spree is aimed at seasoned vacationers who know what they want and are unwilling to compromise.



Kitchens boast stainless steel appliances and designer high-definition countertops.



New everything, including wood, wallboard, linoleum, soft goods, crown molding, glass-covered oven, 5-inch dinette cushions and LED lighting. Outside, a painted cap, new graphics and a 30-inch entry door.



Spree bedrooms include a cotton cloud deep quilt mattress with body pillow and bedspread, designer headboard and generous closet and wardrobe storage.

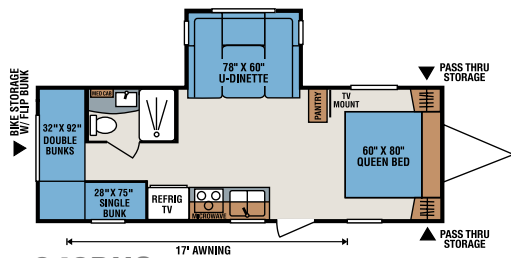


Plentiful storage and easy-clean flooring.

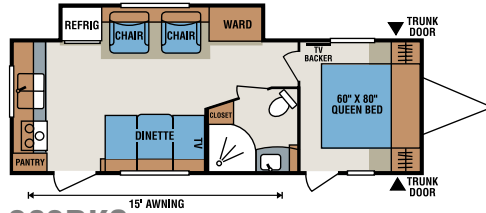


Power bath vent and skylight over the tub.

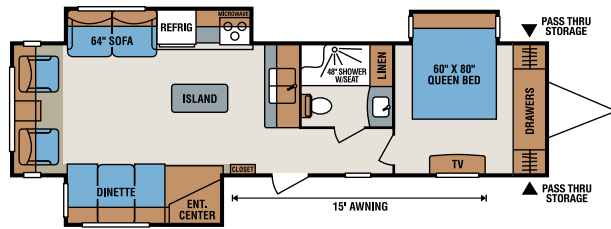
All these great Spree floorplans to choose from....!



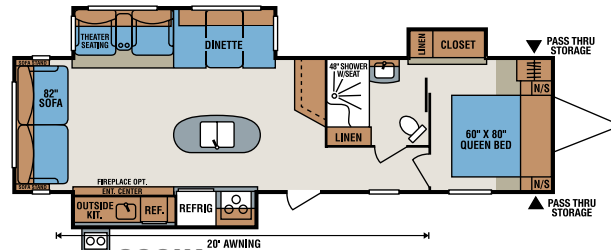
240BHS



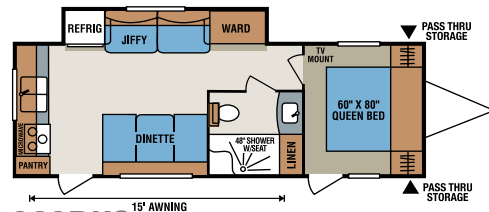
263RKS



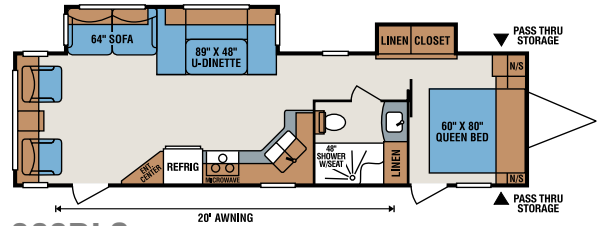
320BS



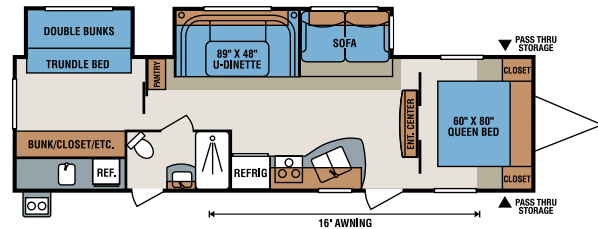
328IK



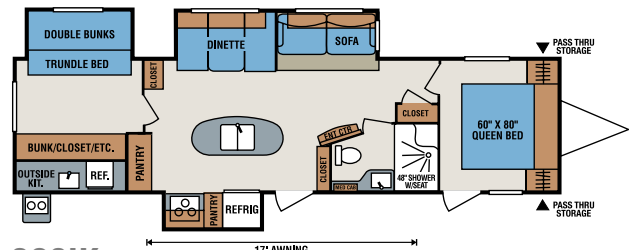
262RKS



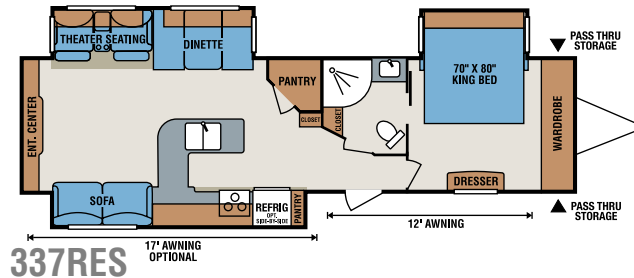
300RLS



322BHS



329IK



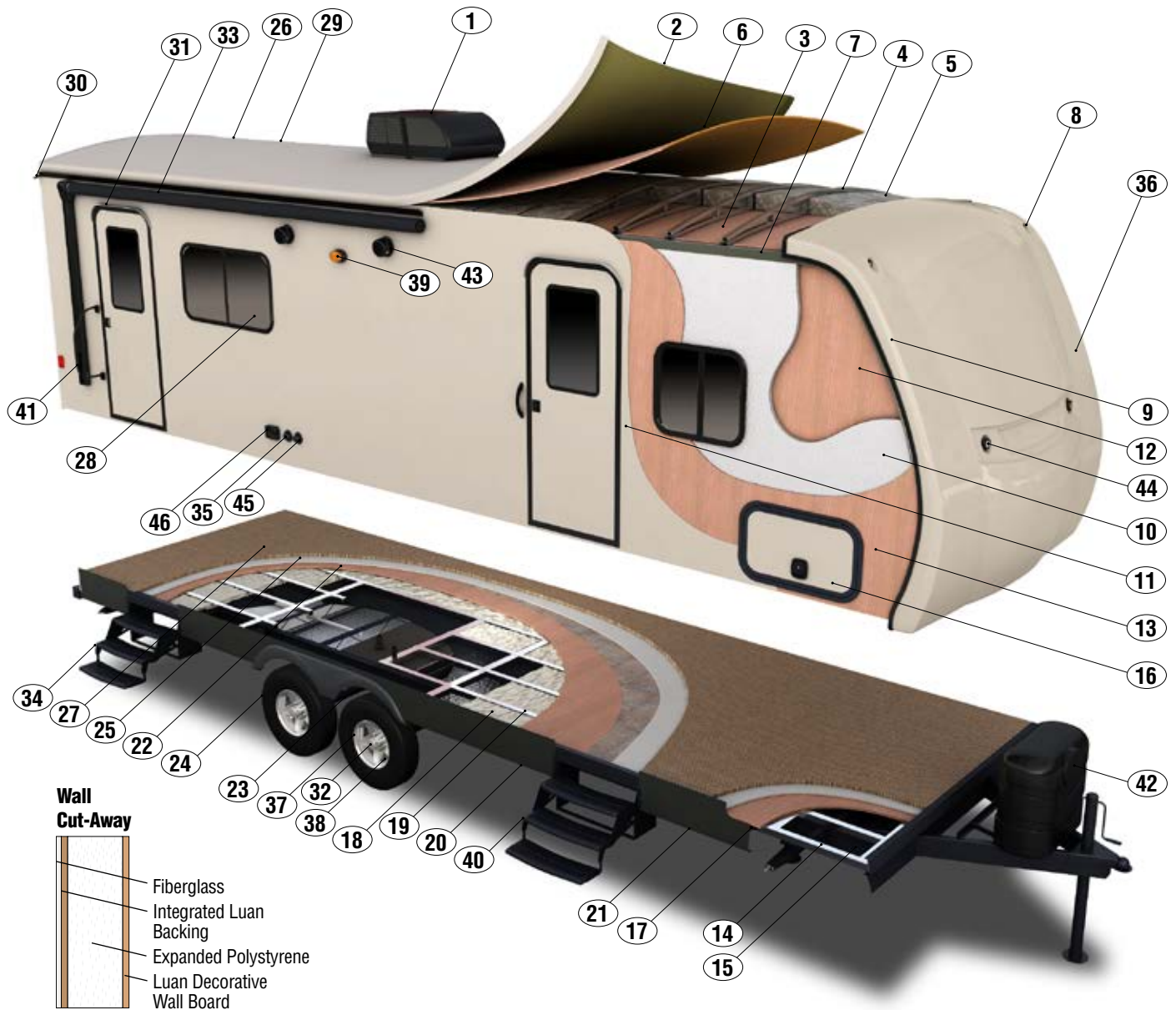
337RES

Travel Trailers	240BHS	262RKS	263RKS	300RLS	320BS	322BHS	328IK	329IK	337RES
UVW (Unloaded Vehicle Weight) *	5,160	5,590	5,710	6,970	7,770	7,150	8,160	8,130	8,410
Dry Hitch Weight*	570	600	550	970	900	720	740	860	1,020
Dry Axle Weight*	4,590	4,990	5,160	6,000	6,870	6,430	7,420	7,270	7,390
NCC (Net Carrying Capacity)	1,340	1,210	1,090	1,330	1,530	1,150	1,340	1,370	1,090
GVWR	6,500	6,800	6,800	8,300	9,300	8,300	9,500	9,500	9,500
Interior Height	82"	82"	82"	82"	82"	82"	82"	82"	82"
Exterior Height w/ A/C	11' 2"	11' 1"	11' 1"	11' 2"	11' 3"	11' 2"	11' 6"	11' 6"	11' 6"
Exterior Width	96"	96"	96"	96"	96"	96"	96"	96"	96"
Exterior Length	28' 3"	28' 8"	28' 9"	34' 5"	36' 5"	35' 8"	36' 2"	36' 6"	37' 4"
Refrigerator (cu. feet)	6	8	8	8	8	8	8	8	8
Water Heater Cap. (gal. G/E w/DSI)	6	6	6	6	6	6	6	6	6
Fresh Water Cap. (gal.)	40	40	40	40	40	40	40	40	40
Waste Water Cap. (gal.)	32	32	32	32	32	32	32	32	32
Gray Water Cap. (gal.)	32	64	60	32	32	32	32	56	32
LP Gas Cap. (lbs.)	60	60	60	60	60	60	60	60	60
Furnace BTUs (1,000s)	20	20	20	30	30	30	30	30	30
Tire Size	15"	15"	15"	15"	15"	15"	15"	15"	15"
Awning	17'	15'	15'	20'	15'	16'	20'	17'	12' w/17' opt.

\*This weight reflects the rolling average unit weight for each model. Your trailer weight will vary according to optional equipment.



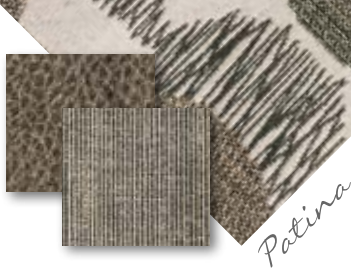
# TOTAL ALUMINUM FRAME



- |   |  |   |
|---|--|---|
| <b>1</b> 13,500 BTU A/C                                 | <b>17</b> Heavy Duty I-beam Frame Construction                                   | <b>31</b> 30" Radius Entrance Door              |
| <b>2</b> SuperFlex Seamless 1-Piece Roofing Material    | <b>18</b> R-7 Batten Insulation  | <b>32</b> Easy Lube Axles                       |
| <b>3</b> Vinyl Interior Ceiling Panel                   | <b>19</b> 2x3 Double Welded Aluminum Floor Joists, 16" O.C.                      | <b>33</b> Standard Awning                       |
| <b>4</b> 4 1/2" Arched Aluminum Truss Rafters, 16" O.C. | <b>20</b> Heated & Enclosed Underbelly   | <b>34</b> Triple Steps                          |
| <b>5</b> R-7 Batten Insulation                          | <b>21</b> Fully-Welded Outriggers  | <b>35</b> Cable Hookup                          |
| <b>6</b> 3/8" Walkable Roof Decking                     | <b>22</b> 5/8" Tongue & Groove Plywood Decking                                   | <b>36</b> Aerodynamic F/G Front Cap             |
| <b>7</b> Heavy Duty Aluminum Headers                    | <b>23</b> Heavy Duty Leaf Springs  | <b>37</b> Auto-Adjusting Brakes                 |
| <b>8</b> Exterior Clearance & Brake Lights              | <b>24</b> 15" Radial Tires   | <b>38</b> Aluminum Rim (Option)                 |
| <b>9</b> Aluminum Frame Front & End Walls               | <b>25</b> Residential Style Carpet Pad   | <b>39</b> Porch Light                           |
| <b>10</b> Expanded Polystyrene R-7                      | <b>26</b> Rack & Pinion Electric Slide w/Manual Override w/Box Tube Slideout Ram | <b>40</b> Triple Entry Step                     |
| <b>11</b> High Gloss Ivory Exterior F/G                 | <b>27</b> Residential Carpet or Linoleum   | <b>41</b> Large Assist Grab Handle              |
| <b>12</b> 1/8" Luan Decorative Wallboard                | <b>28</b> Tinted Safety Glass Windows  | <b>42</b> (2) 30# LP Tanks w/Flip-Up Access Lid |
| <b>13</b> 1/8" Luan                                     | <b>29</b> Triple Sealed Slideouts  | <b>43</b> 2 Exterior Speakers                   |
| <b>14</b> 3" Aluminum Stringer                          | <b>30</b> Extra Long Drip Spouts   | <b>44</b> LED Lights                            |
| <b>15</b> Darco® Corrugated Moisture Barrier            |  | <b>45</b> Satellite Hookup                      |
| <b>16</b> Extra-Large Slam Latch Radius Baggage Doors   |  | <b>46</b> 110 Outlet                            |



*Dawn*



*Patina*



*Twilight*

## Standards

### Living Room/Kitchen

Barrel Ceiling w/Contrasting Accent Trim  
LED Lighting Inside & Out  
Crown Molding w/LED Lights  
Free-Standing Residential Sofa  
Custom Wall Border  
Nightshades  
AM/FM/CD/DVD Bluetooth Player w/USB Port  
Hard Lambrequins & Valances  
Designer High-Definition Countertops  
Decorative Designer Kitchen Backsplash  
8 CU FT Stainless Steel Refrigerator (N/A 240BHS)  
Flush-Mounted Range w/Smooth Glass Cover  
Stainless Steel Oven  
Stainless Steel Microwave w/Turntable  
Sink w/Cover & Residential Pulldown Faucet  
Pendant Lights over Island (where applicable)  
Large Overhead Cabinets  
Solid Wood-Framed Mortise & Tenon Glazed Cabinet Doors  
Drawers under Refrigerator & Ovens (where applicable)  
Roller Ball Bearing Drawer Guides  
Kitchen Skylight  
Monitor Panel

### Bedroom/Bath

Cotton Cloud Deep Quilt Mattress  
Decorative Bedspread w/Body Pillow  
Designer Headboard  
Gas Struts on Bed Base  
Power Bath Vent  
Bath Skylight

### Construction

1-Piece Seamless Roof w/SuperFlex Roofing Material  
3/8" Fully Walk-On Roof Decking  
New Gelcoat Smooth Streamline Painted Front Cap  
6-Sided Aluminum Frame  
High Gloss Ivory Color Infused Gel F/G Sidewalls  
5/8" Tongue & Groove Plywood Floor  
Heated & Enclosed Underbelly

### Exterior

SuperFlex® Flexible Roofing  
Awning w/Drip Rail & Spouts  
Tinted Windows  
30A Service  
30 LB LP Bottles & Cover w/Flip-Up Access Lid  
13,500 BTU A/C  
Exterior Shower  
Outside Speakers  
30" Radius Entry Door  
Large Assist Grab Handle

### Triple Step

Patio Door Light  
Slam Latch Baggage Doors  
Satellite Prep  
Cable Hookup  
TV Antenna w/Booster  
6 GAL Gas/Electric DSI Water heater  
Black Tank Flush  
Rear Bumper w/Sewer Hose Storage  
15" Tires  
Easy Lube Axles  
Self-Adjusting Brakes  
4 Stabilizer Jacks

## Options

Exterior Refrigerator in Front Storage Compartment (F/P specific)  
Outside Grill  
2nd A/C (incl. 50A)  
Recliner (1 or 2) (320BS & 300RLS)  
Theater Seating (forced option on 328IK & 337RES)  
Table & 4 Chairs w/Leaf (N/A 240BHS, 262RKS)  
Jiffy Sofa w/Flip-Up Bunk (322BHS, 329IK)  
Bunk Ladder & Railing (322BHS, 329IK) (N/A w/Jiffy in bunk)  
12 CU FT Side-By-Side Refrigerator (337RES)

## LX Package

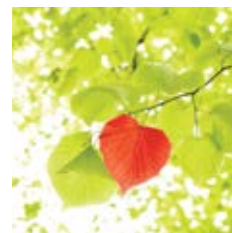
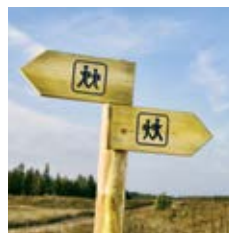
Cotton Cloud Deep Quilt 60" x 80" Gel Foam Mattress  
LED TV (32" or 39")  
Multi-Directional Lighted Power Awning  
Porcelain Toilet  
15" Aluminum Wheels  
Equa-Flex™ Suspension  
Spare Tire/Carrier/Cover

## Elite Package

15,000 BTU A/C  
Ladder  
Frameless Windows  
Maxxair® Bedroom Vent  
Power Front/Rear Stabilizer Jacks  
Power Tongue Jack  
Flip-Up Bike Rack/Cargo Tray

## Diamond Package

- Wired for 2nd A/C w/50A Service
- Deluxe Sleeper Sofa
- Fireplace (N/A 240BHS, 262RKS, 329IK)
- Solid Surface Countertops



**RVIA**

Dealer:

985 N 900 W • Shipshewana, IN 46565  
E-mail [kz@kz-rv.com](mailto:kz@kz-rv.com) • [www.kz-rv.com](http://www.kz-rv.com)

Due to continual research and advances, manufacturer reserves the right to change specifications, design, price and equipment without notice, and assumes no responsibility for any error in this literature. Some items shown are not included as standard or optional equipment. ©2015KZ | 3/20/15 | 30M