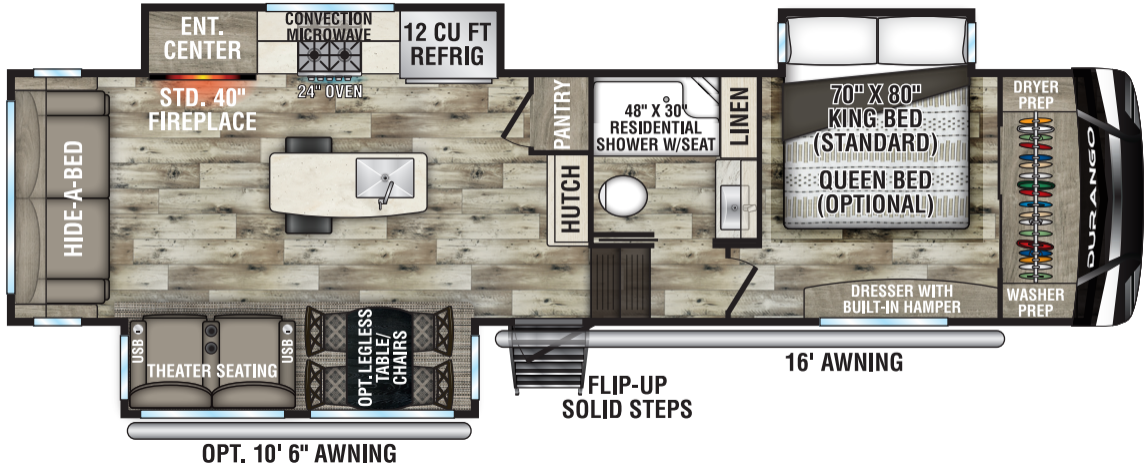


**STD. HITCH RECEIVER
W/4-PIN HARNESS**



HIDE-A-BED

**ENT.
CENTER**

**CONVECTION
MICROWAVE**

**12 CU FT
REFRIG**

24" OVEN

**STD. 40"
FIREPLACE**

PANTRY

**48" X 30"
RESIDENTIAL
SHOWER W/SEAT**

LINEN

**70" X 80"
KING BED
(STANDARD)**

**QUEEN BED
(OPTIONAL)**

**DRYER
PREP**

**WASHER
PREP**

**DRESSER WITH
BUILT-IN HAMPER**

16' AWNING

**FLIP-UP
SOLID STEPS**

USB

THEATER SEATING

USB

**OPT. LEGLESS
TABLE/
CHAIRS**

OPT. 10' 6" AWNING

DURANGO