

# Spree®

**LUXURY LIGHTWEIGHT TRAVEL TRAILERS**





# Spree®

**You'll always have first class accommodations when you travel with a Spree. These high end luxury travel trailers are expertly engineered and provide roomy interiors appointed with the finest furnishings and conveniences. The long list of standard features and available options sets Spree apart from the ordinary.**

Sink into the plush push-back recliners or stretch out on the hide-a-bed sofa that converts into comfortable sleeping space. The wide sliding windows at the free standing dinette let you dine with a view.



The kitchen island, available in select floorplans, provides extra work space with storage underneath. All kitchens feature stainless steel appliances, including a 22-inch oven and over-the-range microwave.





S333RLF | Seal décor



S333RLF | Seal décor

The bedroom in this floorplan is furnished with a quality pillowtop king size bed with designer headboard and expansive easy-access under bed storage area.

For your morning routine, this roomy bathroom has all you need, including a large radius shower with glass door enclosure. A bath skylight lets in natural lighting while a power bath vent provides refreshing ventilation.



S333RLF | Seal décor





A bank of wardrobes, drawers, and cabinets, along with the 4-drawer dresser, give you plenty of space for your favorite things in this bedroom design.

The walk-through bathroom can be accessed from the bedroom or hallway.







# Spree®

Special attention to detail is found throughout the Spree interior like the LED light strip above the living room slide for a touch of style, and motion sensor lights for added convenience.



S343RSK | Seal décor

Spree's kitchen is designed like your kitchen at home. Select models even include double refrigerators, ideal for feeding a crowd.

The multi-media entertainment center increases your pleasure, and features a stereo with Bluetooth technology, DVD, and NFC wireless connectivity, while the fireplace invites you to linger.

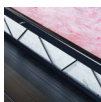


S343RSK | Seal décor





## SPREE TOP 5 FEATURES AND BENEFITS



### Heated & Enclosed Underbelly

Not just enclosed, but HEATED underbelly. Keeps holding tanks from freezing. Keeps road grime off holding tanks, wires & plumbing. Adds aerodynamics.



### Painted Fiberglass Aerodynamic Front Cap

Sleek high-end feature offers good looks.



### 5/8" Tongue & Groove Plywood Floor

Simply put, plywood outperforms OSB in flooring. OSB is not as rigid as plywood, takes longer to dry out, suffers swollen edges/ridges/"ghost lines" under the linoleum, and degrades faster over time when exposed to continuous water.



### Alumi-Tread® Entry Steps

Hybrid step features strong, steel linkage and attractive aluminum treads with anti-slip grooves for excellent traction. Lightweight aluminum step treads resist rust and ensure long-lasting durability.



### True 2-Year Warranty

K-Z's 24-month hitch-to-bumper limited warranty umbrella is the best 2-year warranty in the business, covering more than 1,500 operations codes for a full two years, and protects your investment while you enjoy your new RV.

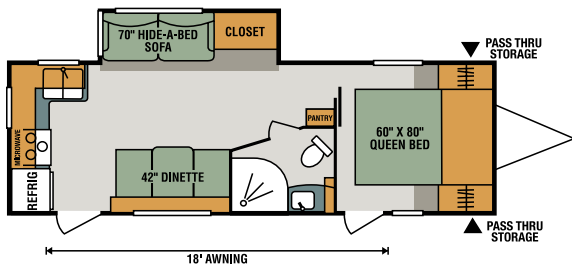


### Optional Ground Controls TT®

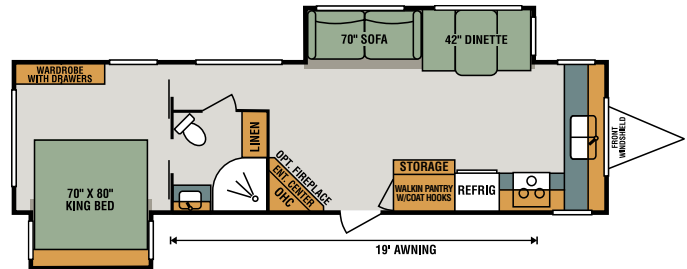
is the first ever automatic leveling system designed for travel trailers, and its one-touch system levels and stabilizes your travel trailer quickly and accurately in a matter of minutes! The all-new stabilizer jacks form a rigid triangle; the strongest shape in nature.



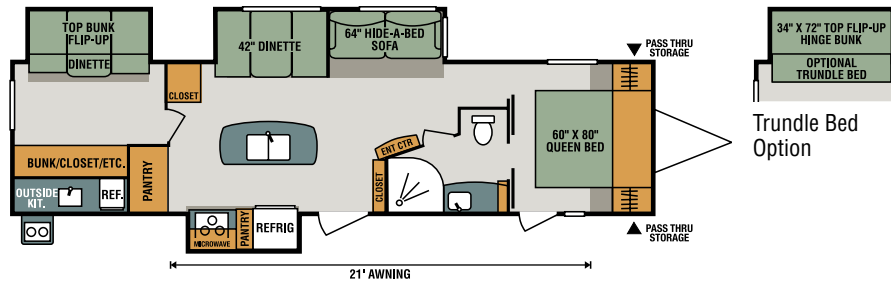
# LUXURY LIGHTWEIGHT TRAVEL TRAILERS



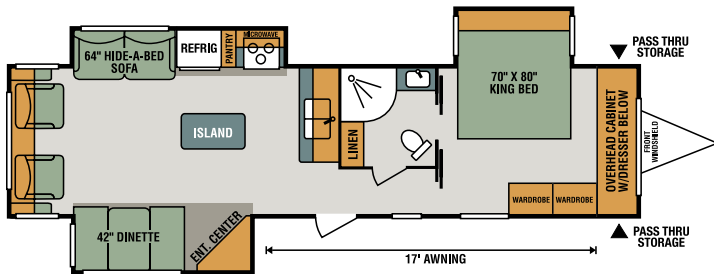
**S251RK**



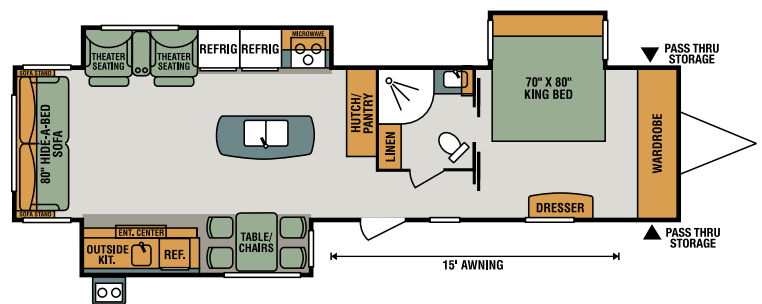
**S302FKF**



**S333BHK**



**S333RLF**



**S343RSK**

| Travel Trailers                    | S251RK | S302FKF | S333BHK | S333RLF | S343RSK |
|------------------------------------|--------|---------|---------|---------|---------|
| UVW (Unloaded Vehicle Weight)*     | 5,590  | 7,330   | 8,130   | 8,140   | 8,770   |
| Dry Hitch Weight*                  | 600    | 970     | 860     | 990     | 930     |
| Dry Axle Weight*                   | 4,990  | 6,360   | 7,270   | 7,150   | 7,840   |
| NCC (Net Carrying Capacity)        | 1,210  | 2,170   | 1,370   | 1,360   | 1,430   |
| GVWR                               | 6,800  | 9,500   | 9,500   | 9,500   | 10,200  |
| Interior Height                    | 82"    | 82"     | 82"     | 82"     | 82"     |
| Exterior Height w/ A/C             | 11' 1" | 11' 6"  | 11' 6"  | 11' 6"  | 11' 6"  |
| Exterior Width                     | 96"    | 96"     | 96"     | 96"     | 96"     |
| Exterior Length                    | 28' 9" | 34' 10" | 36' 11" | 36' 5"  | 37' 10" |
| Refrigerator (cu. feet)            | 8      | 16      | 8       | 8       | 16      |
| Water Heater Cap. (gal. G/E w/DSI) | 6      | 6       | 6       | 6       | 6       |
| Fresh Water Cap. (gal.)            | 40     | 40      | 40      | 40      | 40      |
| Waste Water Cap. (gal.)            | 32     | 32      | 32      | 32      | 32      |
| Gray Water Cap. (gal.)             | 60     | 60      | 56      | 32      | 32      |
| LP Gas Cap. (lbs.)                 | 40     | 40      | 40      | 40      | 40      |
| Furnace BTUs (1,000s)              | 30     | 30      | 30      | 30      | 30      |
| Tire Size                          | 15"    | 15"     | 15"     | 15"     | 15"     |
| Awning                             | 18'    | 19'     | 21'     | 17'     | 15'     |

\*This weight reflects the rolling average unit weight for each model. Your trailer weight will vary according to optional equipment.

## 2018 Décor



Fossil



Seal



Stone

### Standards

- 3/8" Fully Walk-On Roof Decking
- 1-Piece Seamless Roof w/SuperFlex® Roofing Material
- Awning w/Drip Rail & Spouts
- White Gelcoat F/G Sidewalls
- Tinted Windows
- 5/8" Tongue & Groove Plywood Floor
- 26" Radius Entry Door
- Triple Step
- Slam Latch Baggage Doors
- Self-Adjusting Brakes
- 15" Tires
- Rear Bumper W/Sewer Hose Storage
- LED Exterior Lighting
- 30 AMP Service
- 13,500 BTU A/C
- Black Tank Flush
- Exterior Shower
- Digital TV Antenna w/Booster
- Cable Hookup
- Satellite Prep
- Monitor Panel
- Stainless Steel Oven
- Stainless Steel Microwave w/Turntable
- Drawers under Refrigerator & Oven (where applicable)
- Large Overhead Cabinets
- Solid Wood-Framed Mortise & Tenon Cabinet Doors
- Roller Ball Bearing Drawer Guides
- Kitchen Skylight
- LED Interior Lighting
- Nightshades
- Bath Skylight
- Power Bath Vent
- Decorative Bedspread
- Designer Headboard

### Options

- Freestanding Dinette Table and (4) Chairs IPO Dinette
- Theater Seating IPO HAB (required on S343RSK)
- Trundle Bed IPO Dinette in Bunk Slide (S333BHK)
- 15,000 BTU A/C IPO 13,500 BTU A/C

- 50 AMP Service & Wire for 2nd A/C
- 2nd A/C – 13,500 BTU
- Fireplace (N/A S251RK)
- Roof Ladder
- MaxAir® Vent Fan (bathroom only)
- Bumper-Mount Grill
- Bedroom LED TV w/Inside/Outside TV Bracket
- Radiant Technology Package (foil in floor, roof, front & rear)
- 10 CU FT Stainless Steel Refrigerator IPO 8 CU FT Gas/Electric Stainless Steel Refrigerator
- (2) 10 CU FT Stainless Steel Refrigerators IPO (2) 8 CU FT Gas/Electric Stainless Steel Refrigerators (S302FKF, S343RSK only)
- Wireless Backup Camera System – Observation
- Motion Security Sensor for Smart Arm Awning
- Wind Sensor for Smart Arm Awning
- Ground Control 3.0 TT Auto Leveling

### K-Z Advantage Package (mandatory option)

#### Exterior

- Painted Front Cap
- 5-Sided Aluminum Framing
- Flip-Down 71" Storage Rack
- Alumitread® Entry Steps
- Friction-Hinged Entry Door
- Power Front Jack
- Power Awning w/LED Light Strip
- Key Alike Program for Baggage & Entry Doors
- Large Folding Grab Handle
- Exterior Speakers
- Aluminum Rims
- Spare Tire
- Amber Light Step
- Toylok
- Solar Prep
- Backup Camera Prep
- EquaFlex® Suspension
- Nitrogen-Filled Tires
- Battery Disconnect
- 20 LB LP Bottles w/Cover
- Frameless Windows
- Climate Package (heated, enclosed & insulated underbelly)

#### Interior

- 12V Dual USB Ports in Living Room
- Bed Storage System
- Plywood Bed Base w/Gas Struts
- (2) 6 1/2" Interior Speakers
- Stainless Steel Appliances
- Multi-Media Stereo w/Bluetooth
- DVD & NFC Wireless Connectivity
- Porcelain Foot-Flush Toilet
- (2) LED Motion Sensor Lights
- LED Light Strip above Slideout (main living room only)
- Push-Back Recliners
- Storage Bins under Dinette
- Residential Faucet
- Pillowtop Mattress
- Drop-In Cooktop w/Glass Cover
- Kitchen Skylight
- 12V USB Port in Bunk Area
- 22" Oven

### K-Z Convenience Package (mandatory option)

#### Exterior

- New Front Profile w/82" Interior Sidewalls
- Smart Arm Awning w/Exterior Controls
- Front & Rear Electric Stabilizer Jacks
- Omnidirectional HDTV Antenna
- LED Lights in Exterior Speakers

#### Interior

- Armstrong® ToughGuard® Linoleum
- Shaker-Style Hardwood Doors w/Frosted Glass Inserts
- Tri-Fold HAB Sofa
- LED TV
- Solid Surface Countertops w/Sink Cover
- 8 CU FT Gas/Electric Stainless Steel Refrigerator w/Temp. Control (2 – S302FKF, S343RSK)
- Stainless Steel Residential Kitchen Faucet w/Pulldown Sprayer
- Stainless Steel Kitchen Sink
- Interior Control Switches on OH End Cabinet
- Dark Accent Trim on Ceiling, Corners & Entry Doors
- Residential Dinette Light



**True 2-Year Limited Warranty!** K-Z's 24-month hitch-to-bumper limited warranty umbrella is the best 2-year warranty in the business, covering more than 1,500 operations codes for a full two years, and protects your investment while you enjoy your new RV.



**RVIA**

Dealer:



985 N 900 W • Shipshewana, IN 46565  
E-mail [kz@kz-rv.com](mailto:kz@kz-rv.com) • [www.kz-rv.com](http://www.kz-rv.com)

*Due to continual research and advances, manufacturer reserves the right to change specifications, design, price and equipment without notice, and assumes no responsibility for any error in this literature. Some items shown are not included as standard or optional equipment. ©2017KZ | 11/14/17 | 60M*